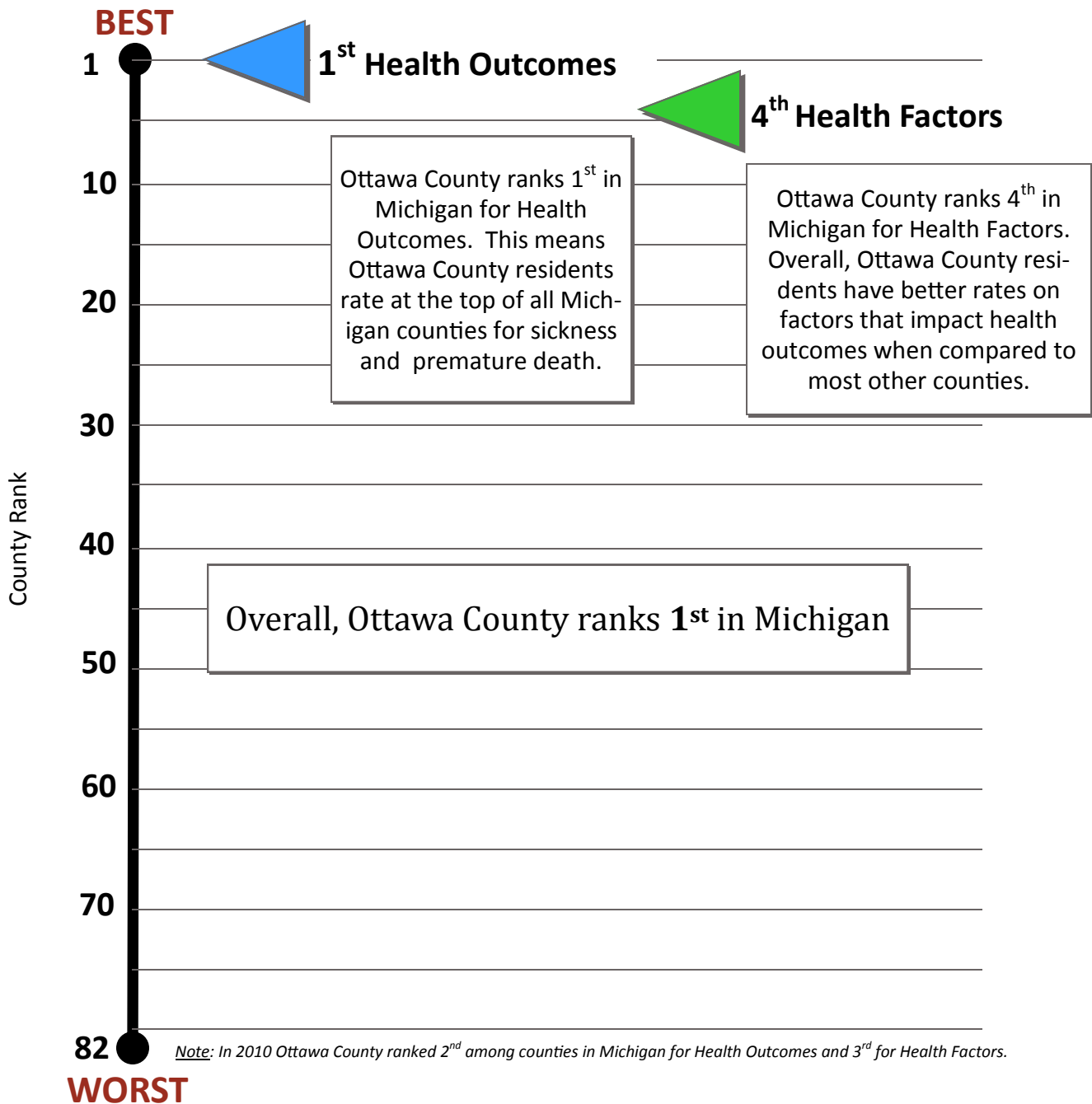




# 2011 County Health Rankings Report OTTAWA COUNTY



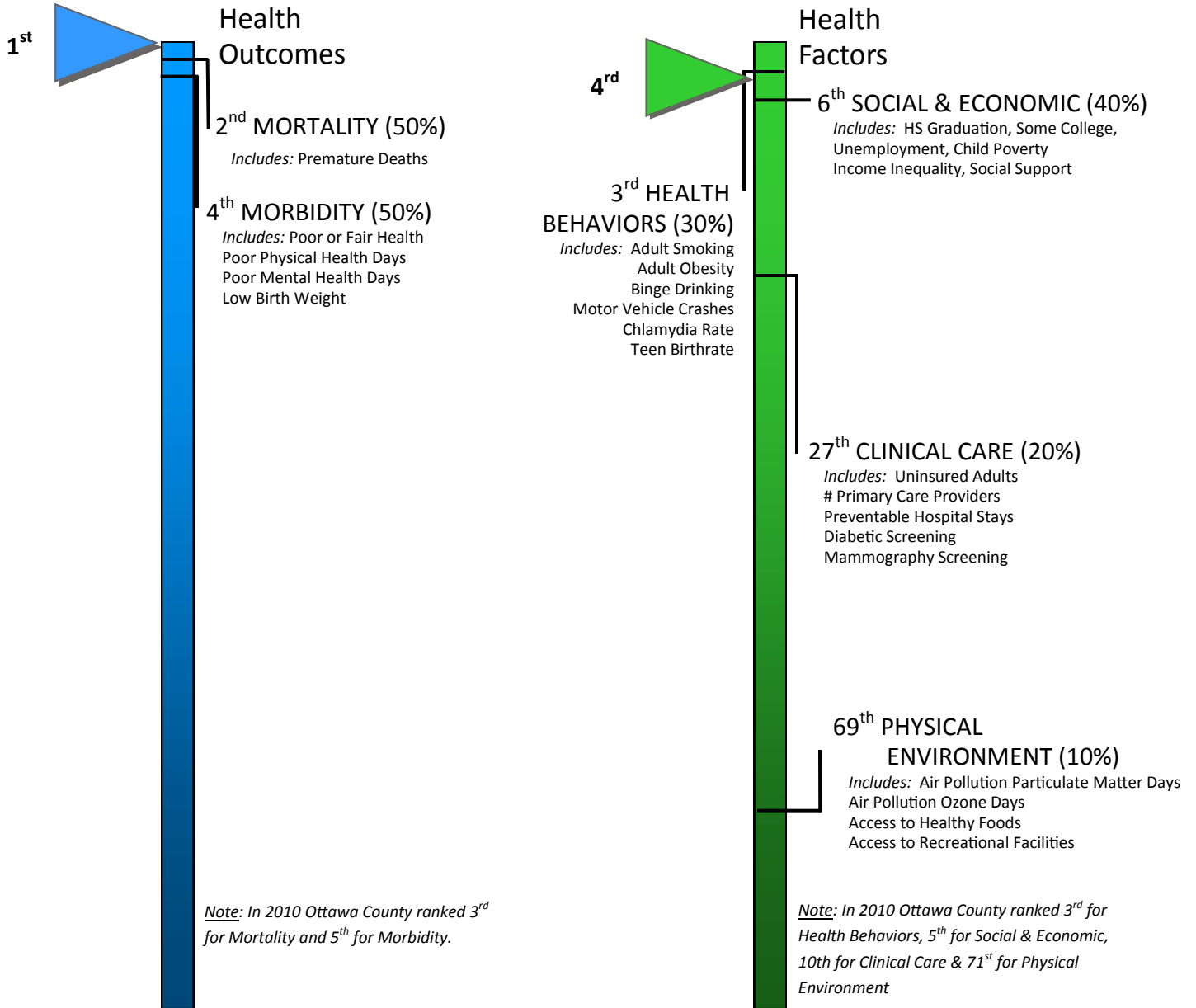
*Note: Counties in Michigan were ranked from 1 (best) to 82 (worst), as Keweenaw County was not ranked.*



# Detailed Rankings OTTAWA COUNTY

Each of the health ranking main categories is comprised of two or more sub-rankings which are themselves composed of several indicators.

Please see [www.countyhealthrankings](http://www.countyhealthrankings) for an interactive and detailed presentation of the data.



Ottawa County ranks 1<sup>st</sup> in Michigan for Health Outcomes.  
Our sub-ranking is higher for premature deaths than for sickness.

Ottawa County ranks 4<sup>th</sup> in Michigan for Health Factors.  
The sub-rankings address a variety of health factors that influence health outcomes. The sub-groups comprise differing proportions of the final rank; health behaviors have a greater influence than the physical environment, for example.

Please contact Shannon Felgner, Ottawa County Health Department spokeswoman, for more information about these rankings.  
sfelgner@miottawa.org (616) 494-5597

*Note: In 2011 Income Inequality was removed from Social & Economic and Some College replaced College Degrees, Mammography Screening replaced Hospice Use in Clinical Care, and Access to Recreational Facilities replaced Liquor Store Density in Physical Environment.*

# 2011 Ottawa SNAPSHOT

		Ottawa County	Target Value *	Michigan	Rank (of 82)
<b>Health Outcomes</b>					<b>1</b>
<b>Mortality</b>					<b>2</b> ↑
Premature death **	(50%)	4,601	≤ 5,564	7,387	
<b>Morbidity</b>					<b>4</b> ↑
Poor or fair health	(10%)	9%	≤ 10%	15%	
Poor physical health days	(10%)	2.9	≤ 2.6	3.5	
Poor mental health days	(10%)	2.5	≤ 2.3	3.7	
Low birth weight	(20%)	6.3%	≤ 6%	8.5%	
<b>Health Factors</b>					<b>4</b>
<b>Health Behaviors</b>					<b>3</b> ↑
Adult smoking	(10%)	17%	≤ 15%	22%	
Adult obesity	(10%)	27%	≤ 25%	31%	
Binge drinking	(2.5%)	18%	≤ 8%	19%	
Motor vehicle crash death rate	(2.5%)	12	≤ 12	13	
Chlamydia rate	(2.5%)	218	≤ 83	446	
Teen birth rate	(2.5%)	22	≤ 22	35	
<b>Clinical Care</b>					<b>27</b> ↓
Uninsured adults	(5%)	15%	≤ 13%	14%	
Primary care provider rate	(5%)	1,441:1	≤ 631:1	874:1	
Preventable hospital stays	(5%)	50	≤ 52	74	
Diabetic screening	(2.5%)	88%	≥ 89%	83%	
Mammography screening	(2.5%)	71%	≥ 74%	69%	
<b>Social &amp; Economic Factors</b>					<b>6</b> ↓
High school graduation rate	(5%)	85%	≥ 92%	72%	
Some college	(5%)	66%	≥ 68%	62%	
Unemployment rate	(10%)	12.3%	≤ 5.3%	13.6%	
Children in poverty	(10%)	9%	≤ 11%	20%	
Inadequate social support	(2.5%)	14%	≤ 14%	20%	
Singe-parent households	(2.5%)	17%	≤ 20%	32%	
Violent crime or homicide rate	(5%)	185	≤ 100	536	
<b>Physical Environment</b>					<b>69</b> ↑
Air pollution-particulate matter days		4	0	5	
Air pollution-ozone days (each 2.5%)		8	0	3	
Access to healthy foods	(2.5%)	85%	≥ 92%	53%	
Access to recreational facilities	(2.5%)	11	≥ 17	10	

\* 90th Percentile, i.e. only 10% are better

\*\* Years of Potential Life Lost per 100,000, age-adjusted

**NOTE: Extensive and detailed information about each data source is available at [www.countyhealthrankings.org/michigan/Ottawa](http://www.countyhealthrankings.org/michigan/Ottawa)**

Template developed by Anne Barna, MA, Health Analyst for Barry-Eaton District Health Department