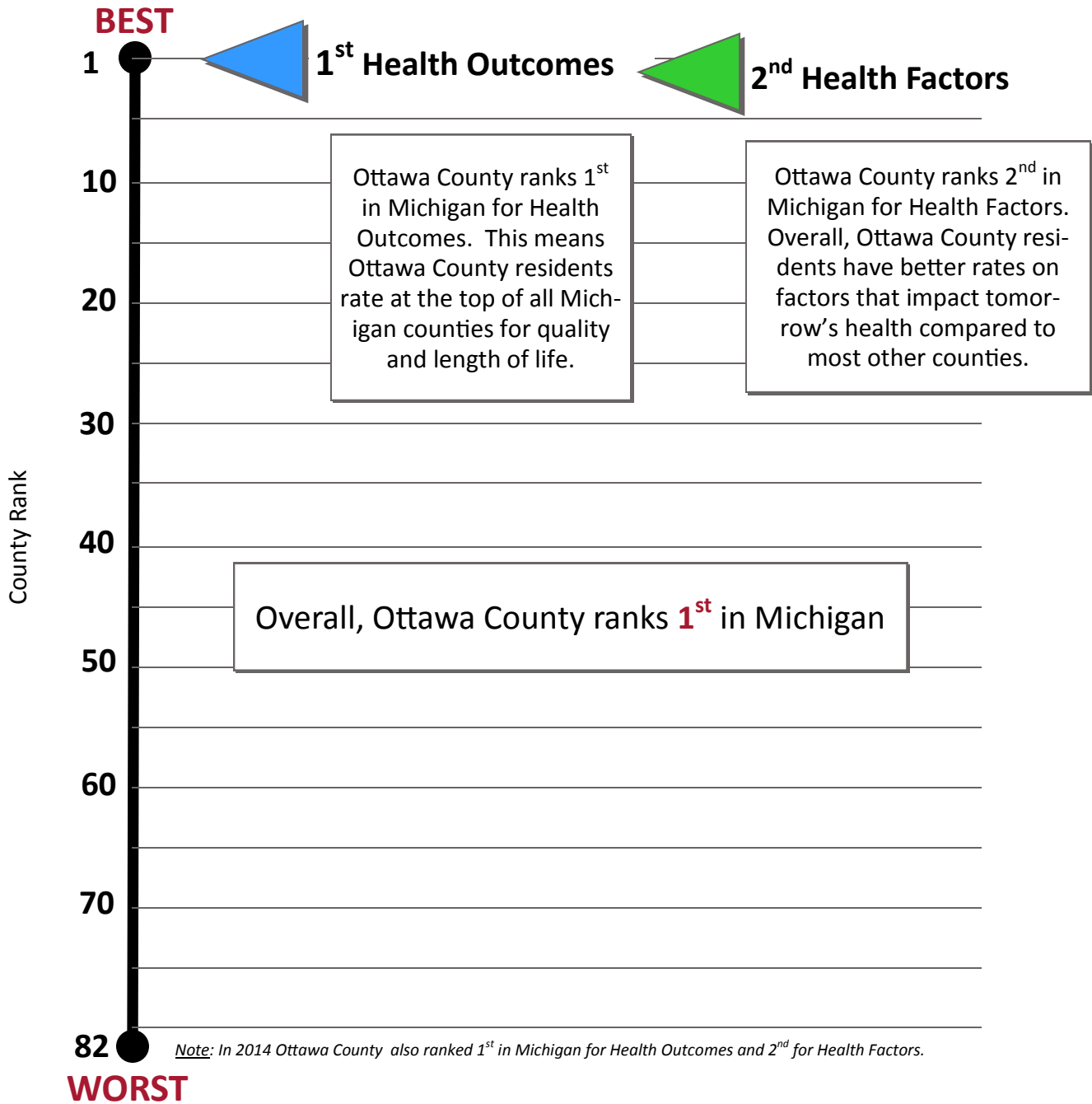




2015 County Health Rankings Report OTTAWA COUNTY



Note: In 2014 Ottawa County also ranked 1st in Michigan for Health Outcomes and 2nd for Health Factors.

Note: Counties in Michigan were ranked from 1 (best) to 82 (worst), as Keweenaw County was not ranked.



County Health Rankings
Mobilizing Action Toward Community Health
www.countyhealthrankings.com

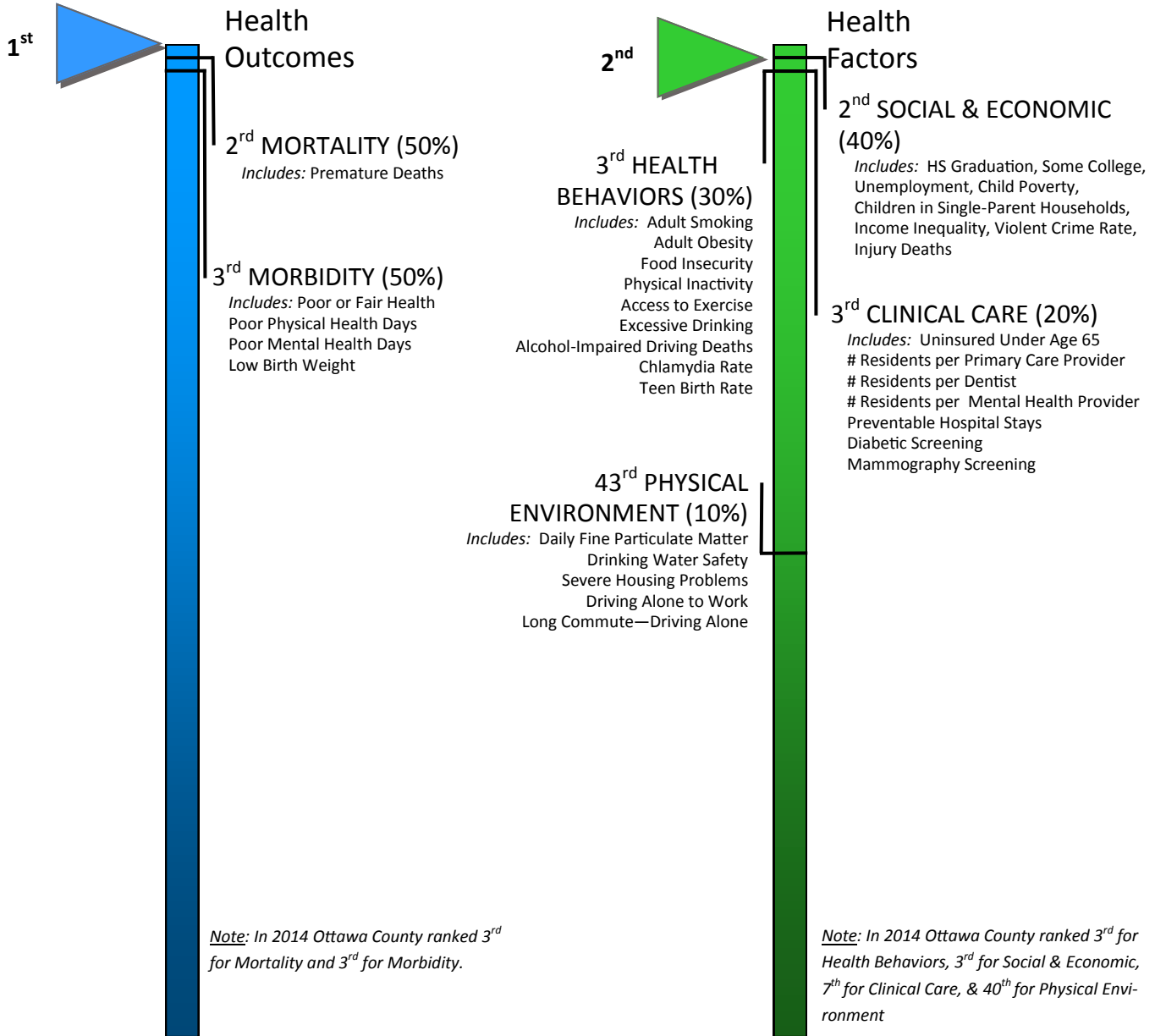
County Health Rankings is a program of the Robert Wood Johnson Foundation and the University of Wisconsin Population Health Institute.

NOTE: Extensive and detailed information about each data source is available at www.countyhealthrankings.org

Template developed by Anne Barna, MA, Health Analyst for Barry-Eaton District Health Department

Detailed Rankings OTTAWA COUNTY

Each of the health ranking main categories is comprised of two or more sub-rankings which are themselves composed of a combination of different indicators.



Ottawa County ranks 1st in Michigan for Health Outcomes.
Our sub-rankings better for premature deaths than for sickness.

Ottawa County ranks 2nd in Michigan for Health Factors.
The sub-rankings address a variety of health factors that influence health outcomes. The sub-groups comprise differing proportions of the final rank; social & economic conditions (40%) have a greater influence than the physical environment (10%), for example.

2015 Ottawa SNAPSHOT

*Arrows indicate change since 2014

		Ottawa County	Target Value	Michigan	Rank (of 82)
Health Outcomes					1
Mortality					2 ↑
Premature death	(50%)	4,637	≤ 5,200	7,218	
Morbidity					3
Poor or fair health	(10%)	10%	≤ 10%	14%	
Poor physical health days	(10%)	2.6	≤ 2.5	3.6	
Poor mental health days	(10%)	2.8	≤ 2.3	3.7	
Low birth weight	(20%)	6.3%	≤ 5.9%	8.4%	
Health Factors					2
Health Behaviors					3
Adult smoking	(10%)	16%	≤ 14%	20%	
Adult obesity	(5%)	25%	≤ 25%	32%	
Food environment index	(2%)	8.0	≥ 8.4	7.2	
Physical inactivity	(2%)	19%	≤ 20%	23%	
Access to exercise opportunities	(1%)	80%	≥ 92%	83%	
Binge & heavy drinking	(2.5%)	19%	≤ 10%	18%	
Alcohol-impaired driving deaths	(2.5%)	20%	≤ 14%	31%	
Chlamydia rate	(2.5%)	281	≤ 138	481	
Teen birth rate	(2.5%)	19	≤ 20	31	
Clinical Care					3 ↑
Uninsured adults/children	(5%)	11%	≤ 11%	13%	
Primary care provider ratio	(3%)	1,682:1	≤ 1,045:1	1,246:1	
Dentist ratio	(1%)	1,868:1	≤ 1,377:1	1,485:1	
Mental health provider ratio	(1%)	689:1	≤ 386:1	487:1	
Preventable hospital stays	(5%)	33	≤ 41	65	
Diabetic screening	(2.5%)	90%	≥ 90%	86%	
Mammography screening	(2.5%)	71.8%	≥ 70.7%	65.6%	
Social & Economic Factors					3
High school graduation rate	(5%)	85%	N/A	78%	
Some college	(5%)	68%	≥ 71%	65.6%	
Unemployment rate	(10%)	6.7%	≤ 4%	8.8%	
Children in poverty	(7.5%)	12%	≤ 13%	24%	
Income Inequality	(2.5%)	3.7%	≤ 3.7	4.7	
Children in single-parent hh	(2.5%)	20%	≤ 20%	34%	
Social Associations	(2.5%)	12.0	22.0	10.2	
Violent crime rate	(2.5%)	168	≤ 59	464	
Injury death rate	(2.5%)	43	≤ 50	60	
Physical Environment					43 ↓
Air pollution-particulate matter	(2.5%)	12.2	≤ 9.5	11.5	
Drinking water safety	(2.5%)	0%	0%	1%	
Severe housing problems	(2%)	14%	≤ 9%	17%	
Driving alone to work	(2%)	84%	≤ 71%	83%	
Long commute-driving alone	(1%)	23%	≥ 15%	32%	