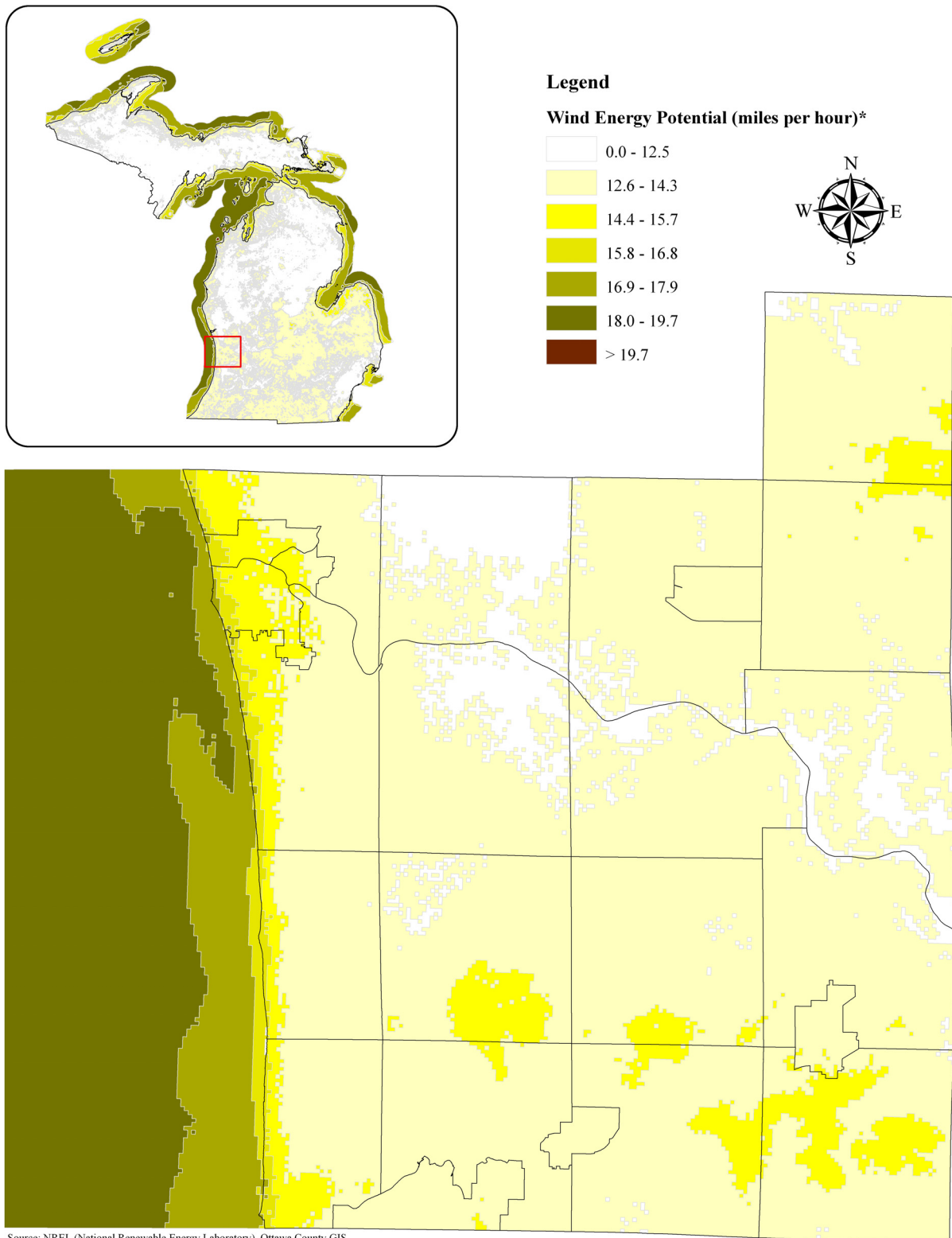


Wind Energy Resource Potential (Ottawa County)



* This map depicts the long-term annual average wind energy potential at 50 meters (164 feet) above ground. In general, 15.8 mph wind energy potential or higher is considered a good resource for generating wind power with turbines at this height.

Please note that this map is intended to be used as a guide in determining the wind energy potential in a general vicinity. Since wind energy resources at a micro level can vary significantly, a professional evaluation should be conducted for a specific area of interest prior to installing a wind turbine.

Wind Energy Resource Potential

(Ottawa County, Municipality)

Wind Energy Potential (Miles Per Hour)

Unit of Government	Wind Energy Potential (Miles Per Hour)										Total Acreage*		
	0.0 to 12.5	12.6 to 14.3	14.4 to 15.7	15.8 to 16.8	16.9 to 17.9	18.0 to 19.7	> 19.7	Acreage	%	Acreage		%	
<i>City/Village</i>													
Coopersville	0.0	0.0%	3,048.1	100%	0.0	0.0%	0.0	0.0%	0.0	0.0%	0.0	0.0%	3,048.1
Ferrysburg	0.0	0.0%	722.3	31.6%	1,240.7	54.3%	297.1	13.0%	25.8	1.1%	0.0	0.0%	2,285.9
Grand Haven	0.0	0.0%	687.5	17.0%	2,716.0	67.2%	518.6	12.8%	121.6	3.0%	0.0	0.0%	4,043.7
Holland**	0.0	0.0%	5,703.5	98.3%	100.7	1.7%	0.0	0.0%	0.0	0.0%	0.0	0.0%	5,804.2
Hudsonville	0.0	0.0%	2,480.8	93.4%	176.0	6.6%	0.0	0.0%	0.0	0.0%	0.0	0.0%	2,656.8
Spring Lake	0.0	0.0%	549.7	49.5%	561.5	50.5%	0.0	0.0%	0.0	0.0%	0.0	0.0%	1,111.2
Zeeland	0.0	0.0%	1,920.0	100%	0.0	0.0%	0.0	0.0%	0.0	0.0%	0.0	0.0%	1,920.0
<i>Township</i>													
Allendale	2,821.5	13.7%	17,711.2	86.3%	0.0	0.0%	0.0	0.0%	0.0	0.0%	0.0	0.0%	20,532.7
Blendon	158.2	0.7%	21,584.3	92.8%	1,528.8	6.5%	0.0	0.0%	0.0	0.0%	0.0	0.0%	23,271.3
Chester	1,202.2	5.2%	19,496.8	85.1%	2,212.0	9.7%	0.0	0.0%	0.0	0.0%	0.0	0.0%	22,911.0
Crockery	13,715.3	64.2%	7,639.9	35.8%	0.0	0.0%	0.0	0.0%	0.0	0.0%	0.0	0.0%	21,355.2
Georgetown	1,259.4	5.8%	20,408.7	93.6%	133.7	0.6%	0.0	0.0%	0.0	0.0%	0.0	0.0%	21,801.8
Grand Haven	0.0	0.0%	13,838.9	73.1%	3,664.5	19.4%	1,216.8	6.4%	209.3	1.1%	0.0	0.0%	18,929.5
Holland	0.0	0.0%	17,120.7	97.3%	469.6	2.7%	0.0	0.0%	0.0	0.0%	0.0	0.0%	17,590.3
Jamestown	74.3	0.3%	15,936.1	70.4%	6,647.1	29.3%	0.0	0.0%	0.0	0.0%	0.0	0.0%	22,657.5
Olive	1,147.1	5.0%	17,886.7	77.2%	4,128.8	17.8%	0.0	0.0%	0.0	0.0%	0.0	0.0%	23,162.6
Park	0.0	0.0%	9,732.8	71.5%	3,120.3	22.9%	706.9	5.2%	48.2	0.4%	0.0	0.0%	13,608.2
Polkton	2,268.5	8.9%	23,163.1	91.1%	0.0	0.0%	0.0	0.0%	0.0	0.0%	0.0	0.0%	25,431.6
Port Sheldon	9.9	0.1%	12,432.9	85.9%	1,445.3	10.0%	581.3	4.0%	0.0	0.0%	0.0	0.0%	14,469.4
Robinson	7,523.6	29.7%	17,770.5	70.3%	0.0	0.0%	0.0	0.0%	0.0	0.0%	0.0	0.0%	25,294.1
Spring Lake	336.0	3.1%	8,206.3	76.8%	1,702.9	15.9%	369.7	3.5%	72.5	0.7%	0.0	0.0%	10,687.4
Tallmadge	6,455.8	30.6%	14,643.9	69.4%	0.0	0.0%	0.0	0.0%	0.0	0.0%	0.0	0.0%	21,099.7
Wright	241.8	1.0%	22,148.8	95.6%	792.4	3.4%	0.0	0.0%	0.0	0.0%	0.0	0.0%	23,183.0
Zeeland	105.5	0.5%	18,887.5	85.7%	3,044.1	13.8%	0.0	0.0%	0.0	0.0%	0.0	0.0%	22,037.1
Ottawa County	37,319.1	10.1%	293,721.0	79.6%	33,684.4	9.1%	3,690.4	1.0%	477.4	0.2%	0.0	0.0%	368,892.3

Source: NREL (National Renewable Energy Laboratory), Ottawa County GIS

* The acreage will vary slightly depending on the source

** This represents the portion of Holland City located within Ottawa County