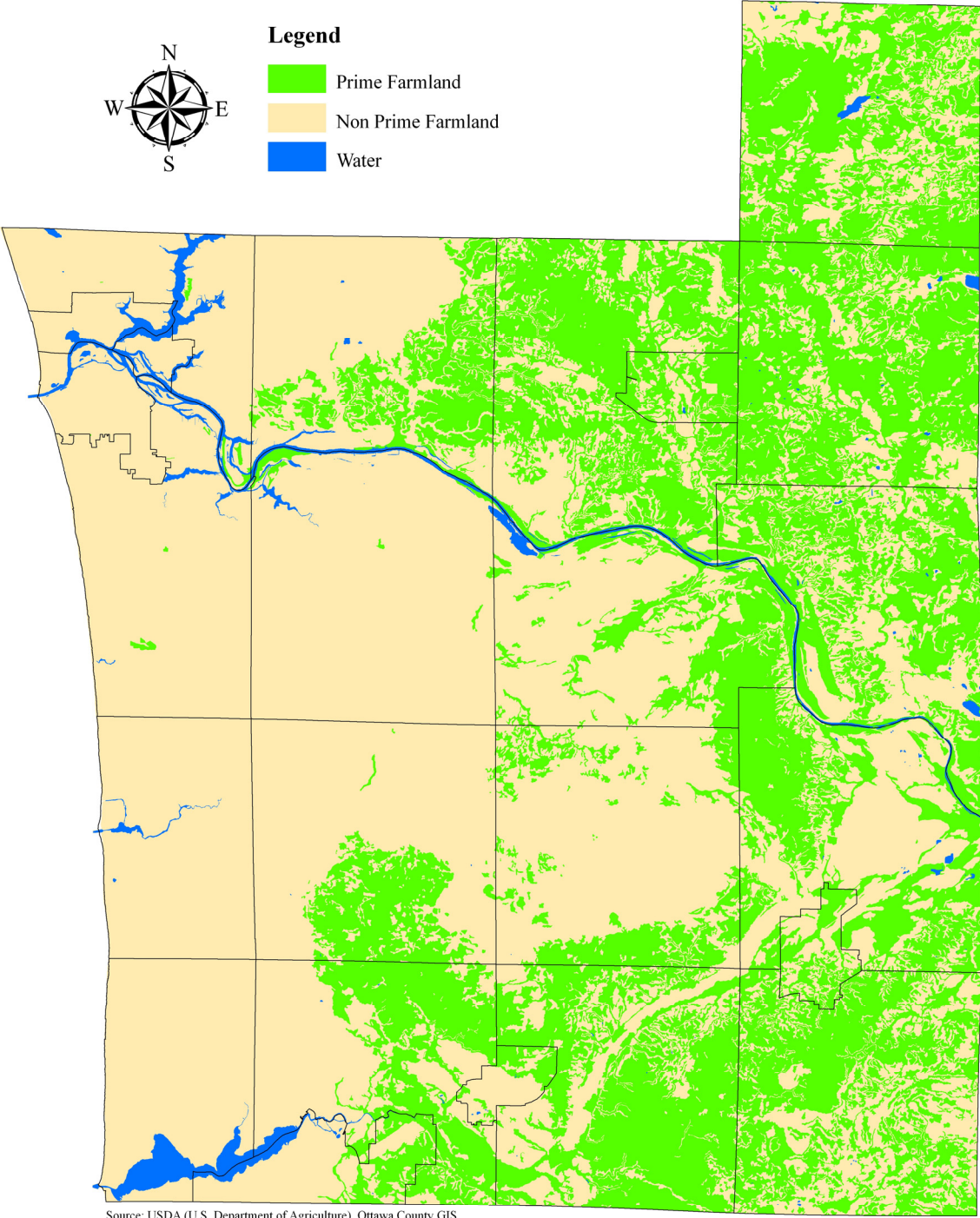


Prime Farmland Soil (Ottawa County)



Prime Farmland Soil (Ottawa County, Municipality)

Unit of Government	Prime Farmland*		Non Prime Farmland		Water		Total Acreage**
	Acreage	%	Acreage	%	Acreage	%	
<i>City/Village</i>							
Coopersville	2,051.8	67.3%	989.9	32.5%	6.4	0.2%	3,048.1
Ferrysburg	0.0	0.0%	1,916.6	84.0%	364.0	16.0%	2,280.6
Grand Haven	0.8	0.02%	3,733.5	92.8%	287.8	7.2%	4,022.1
Holland***	1,421.2	24.5%	3,984.9	68.8%	386.9	6.7%	5,793.0
Hudsonville	1,365.4	51.4%	1,291.4	48.6%	0.0	0.0%	2,656.8
Spring Lake	0.0	0.0%	796.2	71.6%	315.1	28.4%	1,111.3
Zeeland	670.1	34.9%	1,243.4	64.8%	6.6	0.3%	1,920.1
<i>Township</i>							
Allendale	6,113.5	29.8%	13,936.6	67.9%	482.4	2.3%	20,532.5
Blendon	4,766.8	20.5%	18,504.0	79.5%	0.0	0.0%	23,270.8
Chester	14,549.7	63.5%	8,252.9	36.0%	118.9	0.5%	22,921.5
Crockery	6,375.1	29.8%	14,697.9	68.8%	289.7	1.4%	21,362.7
Georgetown	10,551.4	48.4%	11,074.8	50.8%	178.2	0.8%	21,804.4
Grand Haven	90.2	0.5%	18,353.4	97.0%	473.3	2.5%	18,916.9
Holland	7,632.0	43.4%	9,752.5	55.5%	201.4	1.1%	17,585.9
Jamestown	13,537.5	59.8%	9,106.4	40.2%	7.9	0.03%	22,651.8
Olive	4,884.8	21.1%	18,275.7	78.9%	1.9	0.01%	23,162.4
Park	0.0	0.0%	12,297.3	90.5%	1,294.4	9.5%	13,591.7
Polkton	16,129.8	63.4%	9,101.9	35.8%	200.6	0.8%	25,432.3
Port Sheldon	0.0	0.0%	14,300.5	99.0%	140.5	1.0%	14,441.0
Robinson	376.5	1.5%	24,519.2	96.9%	398.2	1.6%	25,293.9
Spring Lake	165.8	1.6%	9,580.0	89.8%	920.1	8.6%	10,665.9
Tallmadge	11,931.8	56.5%	8,820.6	41.8%	353.6	1.7%	21,106.0
Wright	16,843.4	72.6%	6,235.5	26.9%	108.0	0.5%	23,186.9
Zeeland	14,710.1	66.8%	7,308.8	33.2%	6.7	0.03%	22,025.6
Ottawa County	134,167.7	36.4%	228,073.9	61.8%	6,542.6	1.8%	368,784.2

Source: USDA (U.S. Department of Agriculture), Ottawa County GIS, 1997

* See the Glossary of Terms for the definition

** The acreage will vary slightly depending on the source

*** This represents the portion of Holland City located within Ottawa County