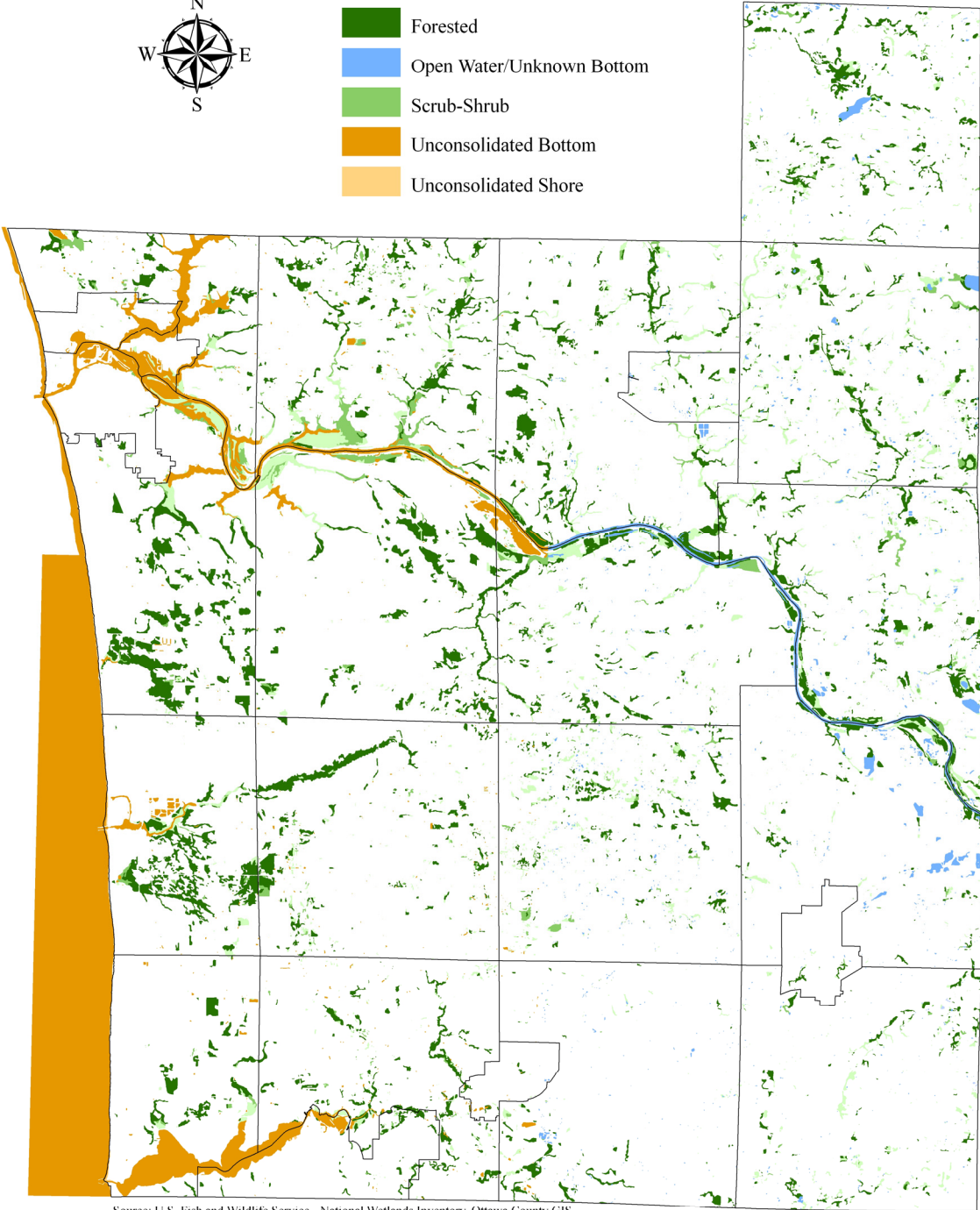


Wetland Inventory (Ottawa County)

Legend

- Aquatic Bed
- Emergent
- Forested
- Open Water/Unknown Bottom
- Scrub-Shrub
- Unconsolidated Bottom
- Unconsolidated Shore



Source: U.S. Fish and Wildlife Service - National Wetlands Inventory, Ottawa County GIS

Wetland Inventory (Ottawa County, Municipality)

Unit of Government	Wetland Class*												Total Acreage**		
	Aquatic Bed		Emergent		Forested		Open Water/ Unknown Bottom		Scrub-Shrub		Unconsolidated Bottom			Unconsolidated Shore	
	Acreage	%	Acreage	%	Acreage	%	Acreage	%	Acreage	%	Acreage	%		Acreage	%
City/Village															
Coopersville	0.6	0.3%	72.7	35.2%	96.8	46.9%	17.0	8.2%	19.3	9.4%	0.0	0.0%	0.0	0.0%	206.4
Ferrysburg	0.0	0.0%	2.7	0.7%	4.1	1.1%	0.0	0.0%	10.6	2.8%	366.2	95.3%	0.6	0.1%	384.2
Grand Haven	0.0	0.0%	12.2	2.1%	20.0	3.5%	0.0	0.0%	17.4	3.0%	502.1	87.6%	21.7	3.8%	573.4
Holland***	0.0	0.0%	45.1	6.0%	174.2	23.2%	0.0	0.0%	9.5	1.3%	517.9	68.9%	4.4	0.6%	751.1
Hudsonville	0.0	0.0%	8.4	16.2%	36.7	70.7%	3.6	7.0%	3.2	6.1%	0.0	0.0%	0.0	0.0%	51.9
Spring Lake	0.0	0.0%	28.2	5.8%	0.0	0.0%	0.0	0.0%	0.0	0.0%	455.1	93.9%	1.6	0.3%	484.9
Zeeland	0.0	0.0%	4.6	8.5%	33.2	61.8%	2.5	4.7%	0.3	0.5%	13.2	24.5%	0.0	0.0%	53.8
Township															
Allendale	1.5	0.1%	429.9	18.2%	1,037.4	43.9%	333.1	14.1%	268.8	11.4%	291.7	12.3%	0.0	0.0%	2,362.4
Blendon	2.5	0.2%	439.6	29.6%	700.1	47.1%	90.2	6.1%	239.0	16.1%	13.5	0.9%	0.0	0.0%	1,484.9
Chester	8.2	0.5%	360.1	20.1%	1,115.2	62.4%	184.6	10.3%	119.0	6.7%	0.0	0.0%	0.0	0.0%	1,787.1
Crockery	0.5	0.1%	537.6	17.1%	1,401.4	44.6%	0.0	0.0%	783.1	24.9%	416.4	13.3%	0.0	0.0%	3,139.0
Georgetown	0.0	0.0%	216.9	16.1%	543.8	40.3%	538.6	39.9%	50.6	3.7%	0.0	0.0%	0.0	0.0%	1,349.9
Grand Haven	0.0	0.0%	400.4	11.8%	2,143.8	63.0%	0.0	0.0%	97.0	2.8%	727.3	21.4%	35.3	1.0%	3,403.8
Holland	1.5	0.1%	154.1	12.5%	788.9	63.8%	0.0	0.0%	35.7	2.9%	256.1	20.7%	0.0	0.0%	1,236.3
Jamestown	9.7	1.1%	393.4	43.0%	408.5	44.7%	45.7	5.0%	56.9	6.2%	0.0	0.0%	0.0	0.0%	914.2
Olive	0.0	0.0%	157.1	11.0%	1,116.2	78.2%	0.0	0.0%	104.7	7.3%	50.4	3.5%	0.0	0.0%	1,428.4
Park	0.0	0.0%	101.2	4.9%	559.7	27.3%	0.0	0.0%	34.1	1.7%	1,341.9	65.5%	12.6	0.5%	2,049.5
Polkton	1.2	0.1%	522.8	20.4%	1,592.9	62.1%	238.3	9.3%	151.6	5.9%	56.9	2.2%	0.0	0.0%	2,563.7
Port Sheldon	0.0	0.0%	191.2	9.6%	1,403.5	70.6%	0.0	0.0%	77.3	3.9%	291.4	14.7%	24.5	1.2%	1,987.9
Robinson	1.0	0.1%	437.4	15.4%	1,618.4	57.0%	0.0	0.0%	287.0	10.1%	496.3	17.5%	0.0	0.0%	2,840.1
Spring Lake	1.8	0.1%	183.3	8.9%	467.3	22.6%	0.0	0.0%	249.1	12.1%	1,158.6	56.2%	2.8	0.1%	2,062.9
Tallmadge	6.1	0.2%	524.0	20.6%	1,319.0	51.8%	480.8	18.9%	216.2	8.5%	0.0	0.0%	0.0	0.0%	2,546.1
Wright	3.0	0.2%	673.7	31.7%	967.6	45.5%	193.3	9.1%	286.9	13.5%	0.0	0.0%	0.0	0.0%	2,124.5
Zeeland	0.4	0.1%	93.0	15.6%	377.7	63.4%	72.3	12.1%	17.0	2.8%	35.7	6.0%	0.0	0.0%	596.1
Ottawa County	38.0	0.1%	5,989.6	16.5%	17,926.4	49.3%	2,220.0	6.0%	3,134.3	8.6%	6,990.7	19.2%	103.5	0.3%	36,382.5

Source: U.S. Fish and Wildlife Service - National Wetlands Inventory, Ottawa County GIS, 1983

* See the Glossary of Terms for the definitions

** The acreage will vary slightly depending on the source

*** This represents the portion of Holland City located within Ottawa County