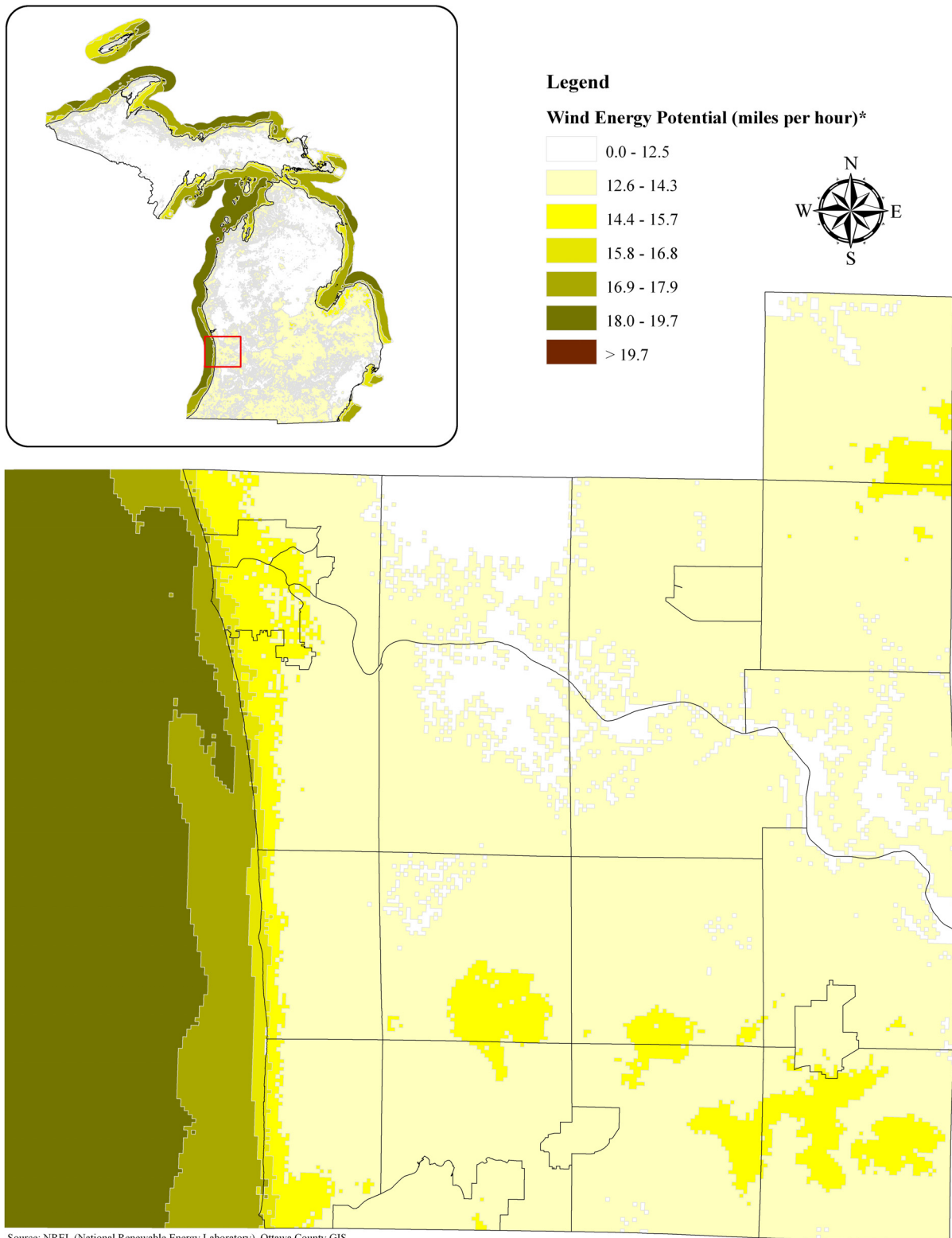


Wind Energy Resource Potential (Ottawa County)



* This map depicts the long-term annual average wind energy potential at 50 meters (164 feet) above ground. In general, 15.8 mph wind energy potential or higher is considered a good resource for generating wind power with turbines at this height.

Please note that this map is intended to be used as a guide in determining the wind energy potential in a general vicinity. Since wind energy resources at a micro level can vary significantly, a professional evaluation should be conducted for a specific area of interest prior to installing a wind turbine.

