

HIGHLAND DRIVE DRAIN

Board of Determination

Ottawa County Water Resources Commissioner

Joe Bush

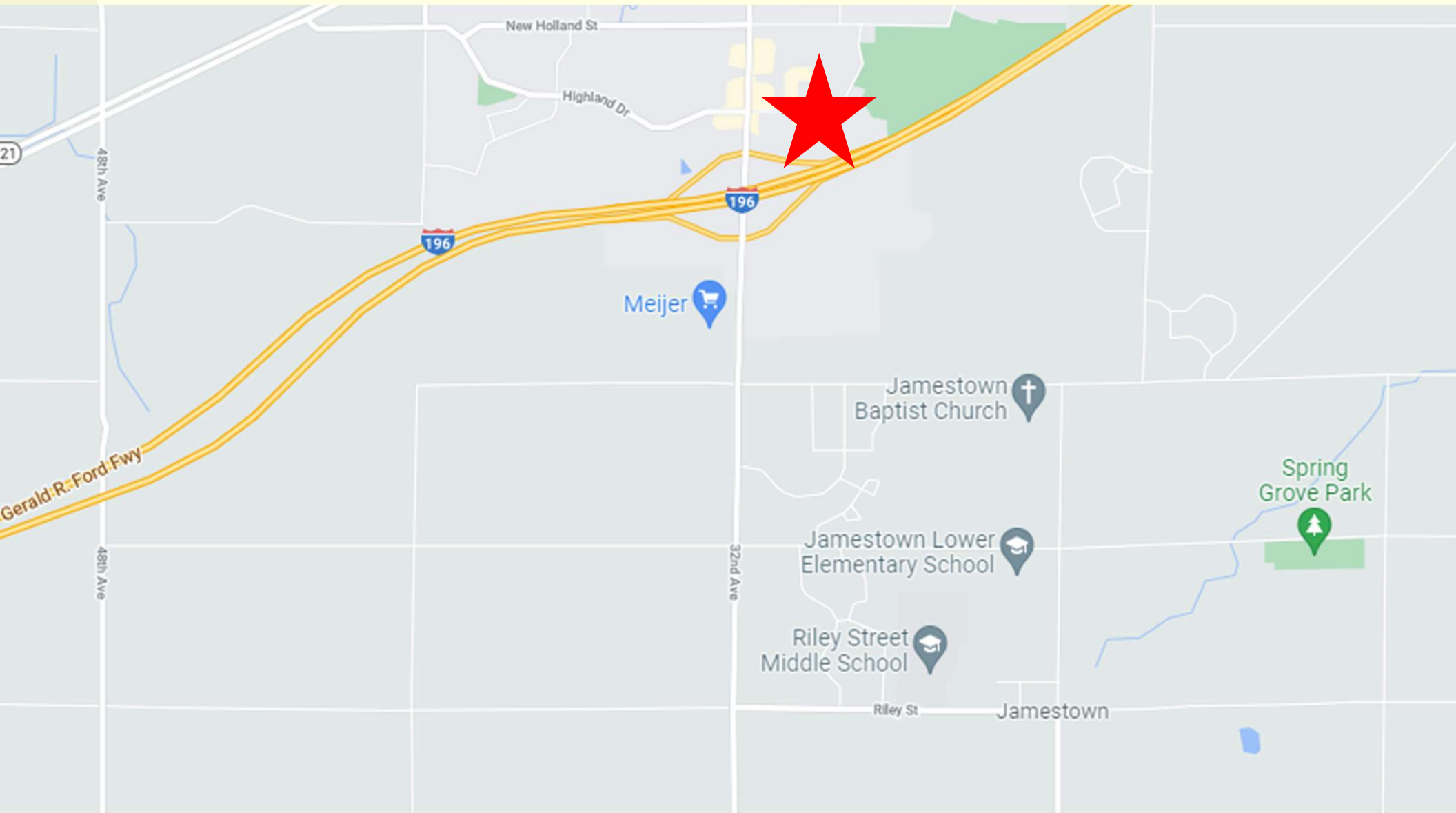
March 2, 2022



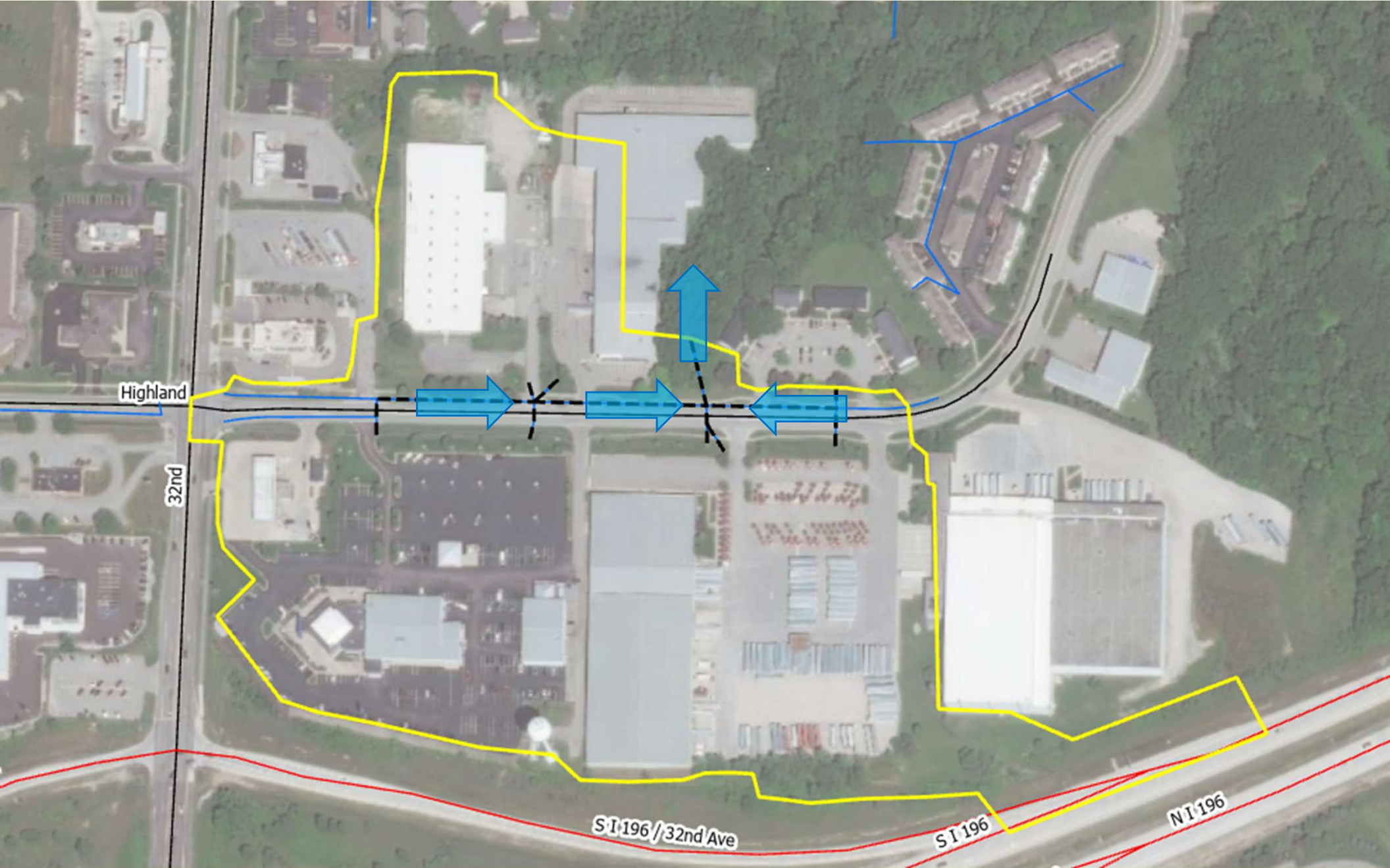
Outline

- Location
- Background
- Drain Condition/Inspection
- Questions

Location



Highland Drive Drain



Background/History

- Orphan Storm Sewer System
- Watershed – 31 Acres
- Serves a Mixture of Land Use Types
 - Commercial
 - Industrial

Scour Hole at Outlet of Storm Sewer



Woody Debris in the Open Channel Downstream



Eroded Downstream Channel



Eroded Downstream Channel



Drain Condition

- Overall Poor Condition
 - Outlet has failed
 - Severe erosion downstream

Ottawa County Water Resources Commissioner

Joe Bush
616-994-4530

Paul Forton, P.E.
989-529-8612
paulf@spicergroup.com

