

**RESOLUTION FOR  
APPLICATION FOR LAYING OUT AND DESIGNATING A DRAINAGE DISTRICT  
AND PETITION TO LOCATE, ESTABLISH AND CONSTRUCT A DRAIN**

**HOLLAND CHARTER TOWNSHIP**

**POPEYES DRAIN**

At a regular meeting of the Holland Charter Township Board, held in Ottawa County, State of Michigan on the 20<sup>th</sup> day of May, 2021, at 7:00 ~~a.m.~~/p.m.

PRESENT: Nienhuis, Dalman, Bush, Becker, Church, Molotky, and TeSlaa

---

ABSENT: None

---

The following resolution was offered by Mr. Bush and seconded by Mr. TeSlaa

---

**WHEREAS**, the Township requests the laying out and designating of a county drain drainage district, located in Ottawa County, pursuant to Chapter 3 of Public Act 40 of 1956, as amended; and

**WHEREAS**, the Township requests the location, establishment and construction of a drain, located in Ottawa County, pursuant to Chapter 4 of Public Act 40 of 1956, as amended; and

**WHEREAS**, the Township has determined that the laying out and designating of the proposed drainage district and the location, establishment and construction of the proposed drain are necessary for the public health in the Township; and

**WHEREAS**, the Township will be liable for an assessment at large against it for a percentage of the cost of the proposed drain.

**NOW, THEREFORE BE IT RESOLVED THAT**, the Township Board does authorize the filing of an application with the Ottawa County Water Resources Commissioner for the laying out and designating of a drainage district.

**BE IT FURTHER RESOLVED THAT**, the Township Board does authorize the filing of a petition with the Ottawa County Water Resources Commissioner for the location, establishment and construction of a drain.

**BE IT FURTHER RESOLVED THAT**, the Supervisor is authorized to execute the application for the laying out and designating of a drainage district and the petition for the location, establishment and construction of a drain.

**BE IT FURTHER RESOLVED THAT**, the Clerk shall forward to the Ottawa County Water Resources Commissioner a copy of this Resolution for the application for laying out and designating a drainage district and the petition for the location, establishment and construction of a drain.

HOLLAND CHARTER TOWNSHIP

Dated: May 20, 2021

  
By: Terry Nienhuis  
Its: Supervisor

Yeas: Nienhuis, Dalman, Bush, Becker, Church, Molotky, and TeSlaa

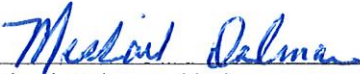
Nays: None

Abstain: None

Absent: None

**Resolution No. 21-60**

I, the undersigned, being duly qualified and acting Clerk of Holland Charter Township, do hereby certify that the foregoing is a true and complete copy of certain proceedings taken by the Township Board for Holland Charter Township at a regular meeting held on the 20th day of May, 2021, and that notice of said meeting was given in accordance with the Open Meetings Act.

  
\_\_\_\_\_  
Michael Dalman, Clerk  
Holland Charter Township

May 20, 2021  
\_\_\_\_\_  
Date

HOLLAND CHARTER TOWNSHIP

APPLICATION FOR LAYING OUT AND DESIGNATING  
A DRAINAGE DISTRICT

POPEYES DRAIN

To the Ottawa County Water Resources Commissioner:


The undersigned is Holland Charter Township, Ottawa County, Michigan. This application has been duly authorized by the governing body of Holland Charter Township and requests that the Popeyes Drain Drainage District be laid out and designated under the provisions of Chapter 3 of Public Act 40 of 1956, as amended.

The proposed drain is necessary for the public health, convenience or welfare and is further necessary for the protection of the public health of Holland Charter Township.

Holland Charter Township will be liable for an assessment at large against it for a percentage of the cost of the proposed Popeyes Drain.

The tentative location of the proposed Popeyes Drain is described in the attached **Exhibit A**.

Dated: May 20, 2021

  
\_\_\_\_\_  
By: Terry Nienhuis  
Its: Supervisor

  
\_\_\_\_\_  
By: Michael Dalman  
Its: Clerk

**HOLLAND CHARTER TOWNSHIP**  
**PETITION FOR LOCATING, ESTABLISHING**  
**AND CONSTRUCTING A DRAIN**

**POPEYES DRAIN**

To the Ottawa County Water Resources Commissioner:

The undersigned is Holland Charter Township, Ottawa County, Michigan. This petition has been duly authorized by the governing body of Holland Charter Township and requests that the Popeyes Drain be located, established and constructed under the provisions of Chapter 4 of Public Act 40 of 1956, as amended, to alleviate drainage issues in the Drainage District.


The proposed drain is located in Holland Charter Township, Ottawa County, Michigan.

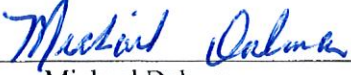
The proposed drain is necessary for the public health, convenience or welfare and benefits the public health in Holland Charter Township.

Holland Charter Township understands that it will be liable for an assessment at large against it for a percentage of the cost of the proposed drain.

The tentative location of the proposed Popeyes Drain is described in the attached **Exhibit A**.

Dated:           May 20          , 2021

  
\_\_\_\_\_  
By: Terry Nienhuis  
Its: Supervisor

  
\_\_\_\_\_  
By: Michael Dalman  
Its: Clerk

April 2021  
2210378

**EXHIBIT A: POPEYES DRAIN  
ROUTE AND COURSE DESCRIPTION**

(Section 21 of Holland Charter Township, Ottawa County, Michigan)

*See attached GIS exhibit "Exhibit A: Popeyes Drain Route and Course" dated April 2021 (total 1 sheet).*

All of the drainage facilities (including detention ponds, storm sewers, manholes, catch basins, and catch basin leads and excluding underdrain, roof drains, and sump lines) as shown in the attached exhibit and described more specifically as follows:

Commencing on the north quarter corner of section 21 of Holland Charter Township; thence S00°34'55"W an approximate distance of 2078 feet along the north/south quarter line of said section 21; thence S90°00'00"E an approximate distance of 1751 feet to the point of beginning "A"; thence a 12 inch storm sewer running N33°24'27"W an approximate distance of 78 feet; thence through detention pond #1 running N30°37'31"W an approximate distance of 219 feet; thence through detention pond #1 running N58°17'12"W an approximate distance of 74 feet; thence through detention pond #1 running N85°19'51"W an approximate distance of 87 feet; thence a 42 inch storm sewer running N00°23'20"E an approximate distance of 283 feet to manhole and point "B"; thence a 36 inch storm sewer running N00°53'24"E an approximate distance of 279 feet to manhole and point "C"; thence a 36 inch storm sewer running N89°25'04"W an approximate distance of 120 feet to catch basin and point "D"; thence a 30 inch storm sewer running N89°27'14"W an approximate distance of 199 feet to catch basin and point "E"; thence a 15 inch storm sewer running N48°48'24"W an approximate distance of 162 feet; thence a 12 inch storm sewer running N87°23'50"W an approximate distance of 49 feet; thence a 12 inch storm sewer running S87°31'55"W an approximate distance of 50 feet; thence a 12 inch storm sewer running N89°38'31"W an approximate distance of 35 feet; thence a 12 inch storm sewer running N89°15'10"W an approximate distance of 50 feet; thence a 12 inch storm sewer running N88°15'29"W an approximate distance of 64 feet to catch basin and point "F"; thence a 12 inch storm sewer running N34°17'09"W an approximate distance of 61 feet; thence a 12 inch storm sewer running N89°45'20"W an approximate distance of 30 feet; thence through detention pond #2 running N02°09'38"W an approximate distance of 104 feet to 12 inch outlet and point "G"; thence through detention pond #2 running N01°12'40"E an approximate distance of 300 feet to 12 inch outlet and point "H"; thence through detention pond #2 running N12°02'57"W an approximate distance of 76 feet; thence a 24 inch storm sewer running N00°52'21"E an approximate distance of 140 feet to catch basin and point "I"; thence a 21 inch storm sewer

running N88°46'52"W an approximate distance of 122 feet to catch basin and point "J"; thence a 15 inch storm sewer running N03°23'36"W an approximate distance of 201 feet; thence a 12 inch storm sewer running N89°33'33"W an approximate distance of 68 feet; thence a 12 inch storm sewer running N35°50'23"W an approximate distance of 24 feet; thence a 12 inch storm sewer running S76°35'38"W an approximate distance of 129 feet; thence a 12 inch storm sewer running N90°00'00"W an approximate distance of 10 feet to catch basin and point of ending "O".

Also beginning on point "B"; thence a 24 inch storm sewer running N80°33'26"W an approximate distance of 145 feet; thence a 18 inch storm sewer running N88°46'00"W an approximate distance of 170 feet to catch basin and point "K"; thence a 15 inch storm sewer running N89°31'16"W an approximate distance of 191 feet to catch basin and point "L"; thence a 15 inch storm sewer running N67°02'11"W an approximate distance of 287 feet; thence a 12 inch storm sewer running S05°35'43"W an approximate distance of 166 feet to catch basin and point of ending "P".

Also beginning at point "C"; thence a 12 inch storm sewer running N00°05'54"E an approximate distance of 258 feet; thence a 12 inch storm sewer running N01°16'08"E an approximate distance of 265 feet; thence a 12 inch storm sewer running N70°10'53"W an approximate distance of 142 feet; thence a 12 inch storm sewer running N17°23'22"W an approximate distance of 105 feet to catch basin and point of ending "Q".

Also beginning at point "D"; thence a 18 inch storm sewer running N00°53'33"E an approximate distance of 244 feet; thence a 15 inch storm sewer running N00°54'17"E an approximate distance of 246 feet to catch basin and point of ending "R".

Also beginning at point "E"; thence a 30 inch storm sewer running N01°09'13"E an approximate distance of 243 feet to catch basin and point "M"; thence a 24 inch storm sewer running N00°29'30"E an approximate distance of 248 feet to catch basin and point "N"; thence a 18 inch storm sewer running N04°29'32"W an approximate distance of 243 feet; thence a 12 inch storm sewer running N19°41'31"W an approximate distance of 183 feet; thence a 12 inch storm sewer running N36°26'14"W an approximate distance of 90 feet to catch basin and point of ending "S".

Also beginning at point "F"; thence a 12 inch storm sewer running S52°43'28"W an approximate distance of 49 feet; thence a 12 inch storm sewer running S00°31'23"E an approximate distance of 100 feet; thence a 12 inch storm sewer running N89°19'46"W an approximate distance of 22 feet to catch basin and point of ending "T".

Also beginning at point "G"; thence a 12 inch storm sewer running N89°38'05"E an approximate distance of 41 feet; thence a 12 inch storm sewer running S89°18'03"E an approximate distance of 21 feet to catch basin and point of ending "U".

Also beginning at point "H"; thence a 12 inch storm sewer running S89°01'48"E an approximate distance of 38 feet; thence a 12 inch storm sewer running S90°00'00"E an approximate distance of 22 feet to catch basin and point of ending "V".

Also beginning at point "I"; thence a 18 inch storm sewer running S88°43'30"E an approximate distance of 122 feet; thence a 12 inch storm sewer running S89°23'32"E an approximate distance of 121 feet; thence a 12 inch storm sewer running S75°30'55"E an approximate distance of 65 feet to catch basin and point of ending "W".

Also beginning at point "J"; thence a 12 inch storm sewer running S68°33'21"W an approximate distance of 29 feet; thence a 12 inch storm sewer running N85°55'28"W an approximate distance of 52 feet; thence a 12 inch storm sewer running N19°53'29"W an approximate distance of 12 feet; thence a 12 inch storm sewer running N67°38'05"W an approximate distance of 31 feet to catch basin and point of ending "X".

Also beginning at point "K"; thence a 12 inch storm sewer running S40°55'20"W an approximate distance of 217 feet; thence a 12 inch storm sewer running S31°03'43"W an approximate distance of 87 feet to catch basin and point of ending "Y".

Also beginning at point "L"; thence a 12 inch storm sewer running N78°23'14"W an approximate distance of 165 feet to catch basin and point of ending "Z".

Also beginning at point "M"; thence a 12 inch storm sewer running N84°02'45"W an approximate distance of 173 feet to catch basin and point of ending "AA".

Also beginning at point "N"; thence a 12 inch storm sewer running S59°51'12"W an approximate distance of 153 feet; thence a 12 inch storm sewer running N89°18'06"W an approximate distance of 43 feet; thence a 12 inch storm sewer running N89°11'46"W an approximate distance of 49 feet; thence a 12 inch storm sewer running N88°39'15"W an approximate distance of 52 feet; thence a 12 inch storm sewer running N89°50'30"W an approximate distance of 63 feet to catch basin and point of ending "AB".

Also beginning at point "N"; thence a 12 inch storm sewer running N62°38'53"W an approximate distance of 192 feet to catch basin and point of ending "AC".

The total distance of 42 inch storm sewer is approximately 283 feet; the total distance of 36 inch storm sewer is approximately 399 feet; the total distance of 30 inch storm sewer is approximately 442 feet; the total distance of 24 inch storm sewer is approximately 533 feet; the total distance of 21 inch storm sewer is approximately 122 feet; the total distance of 18 inch storm sewer is approximately 779 feet; the total distance of 15 inch storm sewer is approximately 1087 feet; the

total distance of 12 inch storm sewer is approximately 3654 feet; and the total distance through detention ponds is approximately 860 feet. All of these components sum up to an approximate total distance of drain of 8,159 feet.

### *Detention Ponds*

Commencing on the north quarter corner of section 21 of Holland Charter Township; thence S00°34'55"W an approximate distance of 1784 feet along the north/south quarter line of said section 21; thence N90°00'00"E an approximate distance of 1427 feet to the point of beginning "AD" of Detention Pond #1; thence N14°02'07"E an approximate distance of 11 feet; thence N74°17'26"E an approximate distance of 17 feet; thence N58°54'10"E an approximate distance of 38 feet; thence N56°46'05"E an approximate distance of 36 feet; thence N84°48'20"E an approximate distance of 23 feet; thence S68°27'31"E an approximate distance of 21 feet; thence S32°28'16"E an approximate distance of 27 feet; thence S23°17'39"E an approximate distance of 41 feet; thence S51°42'39"E an approximate distance of 13 feet; thence N85°45'48"E an approximate distance of 14 feet; thence N55°50'26"E an approximate distance of 18 feet; thence S88°49'52"E an approximate distance of 26 feet; thence S63°26'05"E an approximate distance of 49 feet; thence S49°15'13"E an approximate distance of 45 feet; thence S31°43'25"E an approximate distance of 67 feet; thence S18°50'18"E an approximate distance of 47 feet; thence S12°15'55"W an approximate distance of 12 feet; thence S20°05'40"W an approximate distance of 23 feet; thence S45°39'31"W an approximate distance of 32 feet; thence S68°43'13"W an approximate distance of 53 feet; thence S62°10'34"W an approximate distance of 21 feet; thence N29°08'04"W an approximate distance of 36 feet; thence N19°23'31"W an approximate distance of 69 feet; thence N33°20'26"W an approximate distance of 47 feet; thence N25°10'24"W an approximate distance of 58 feet; thence N44°30'07"W an approximate distance of 42 feet; thence N48°16'13"W an approximate distance of 26 feet; thence N88°31'50"W an approximate distance of 20 feet; thence N79°56'22"W an approximate distance of 33 feet; thence S79°17'12"W an approximate distance of 39 feet; thence N52°48'53"W an approximate distance of 19 feet to the point of beginning "AD" of Detention Pond #1.

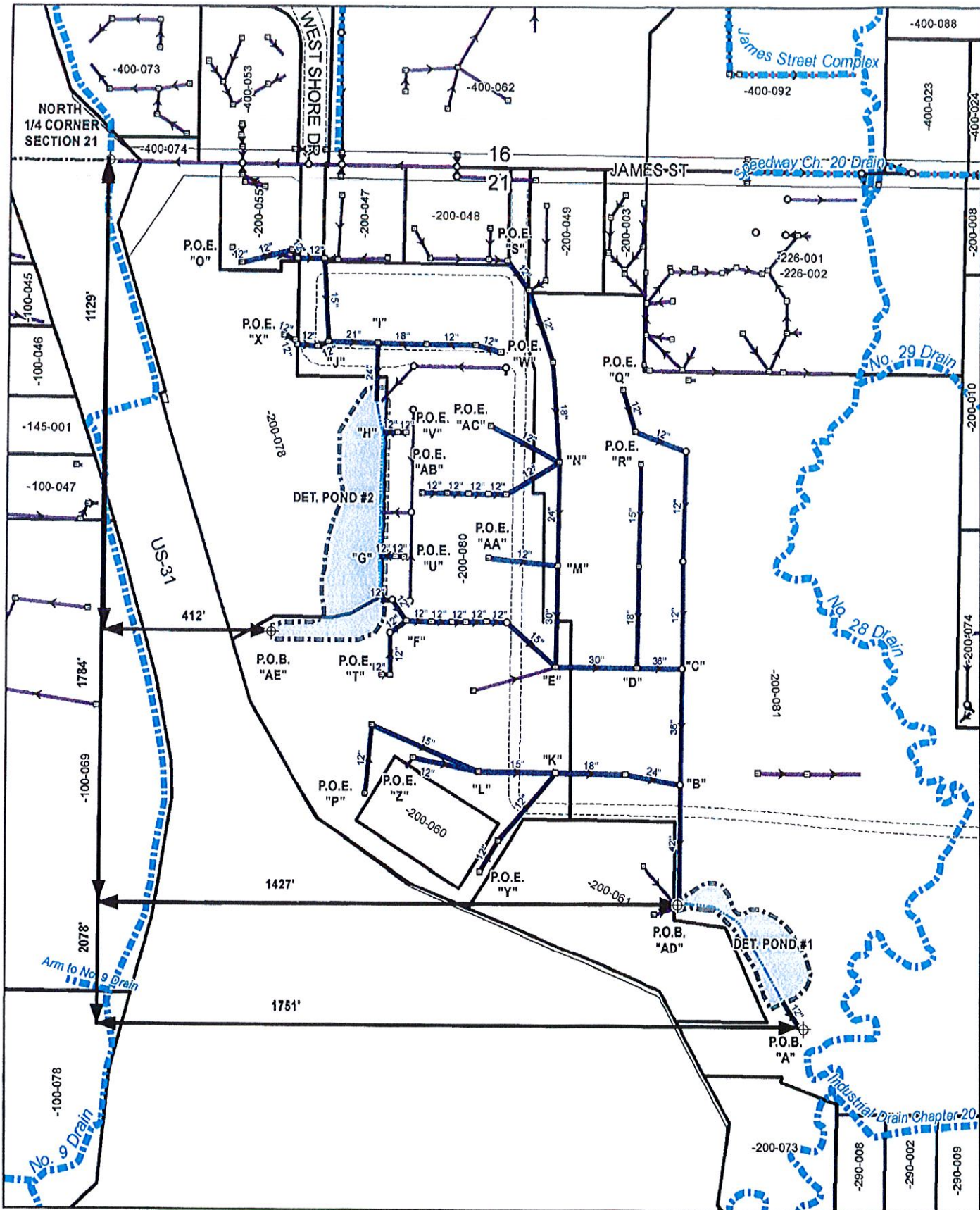
Commencing on the north quarter corner of section 21 of Holland Charter Township; thence S00°34'55"W an approximate distance of 1129 feet along the north/south quarter line of said section 21; thence S90°00'00"E an approximate distance of 412 feet to the point of beginning "AE" of Detention Pond #2; thence N31°28'33"E an approximate distance of 15 feet; thence N72°46'36"E an approximate distance of 27 feet; thence N88°24'11"E an approximate distance of 75 feet; thence N72°53'49"E an approximate distance of 24 feet; thence N31°49'41"E an approximate distance of 15 feet; thence N08°29'54"W an approximate distance of 38 feet; thence N00°30'41"E an approximate distance of 49 feet; thence N13°07'35"E an approximate distance of 23 feet; thence N04°19'30"E an approximate distance of 31 feet; thence N09°30'39"E an approximate distance of 50 feet; thence N14°19'21"E an approximate distance of 38 feet; thence





N23°13'56"E an approximate distance of 58 feet; thence N01°10'10"W an approximate distance of 26 feet; thence N15°56'41"W an approximate distance of 28 feet; thence N00°08'14"E an approximate distance of 109 feet; thence N32°07'14"E an approximate distance of 69 feet; thence N33°14'11"E an approximate distance of 27 feet; thence N36°36'25"E an approximate distance of 23 feet; thence N69°13'38"E an approximate distance of 16 feet; thence S88°18'55"E an approximate distance of 35 feet; thence S09°54'13"E an approximate distance of 33 feet; thence S00°47'50"W an approximate distance of 487 feet; thence S03°51'56"W an approximate distance of 39 feet; thence S33°29'41"W an approximate distance of 42 feet; thence S71°21'56"W an approximate distance of 47 feet; thence N89°15'14"W an approximate distance of 200 feet; thence N58°10'22"W an approximate distance of 18 feet; thence N14°02'05"W an approximate distance of 10 feet to point of beginning "AE" of Detention Pond #2.

Total approximate area of the Popeyes Drain detention ponds is approximately 0.81 acres for Detention Pond No. 1 and 1.88 acres for Detention Pond No. 2. Total area of both detention ponds is approximately 2.69 acres.

*This description was generated using the as-mapped route and course and detention areas from ArcGIS. Actual locations of the route and course and detention areas have not been field verified with GPS.*

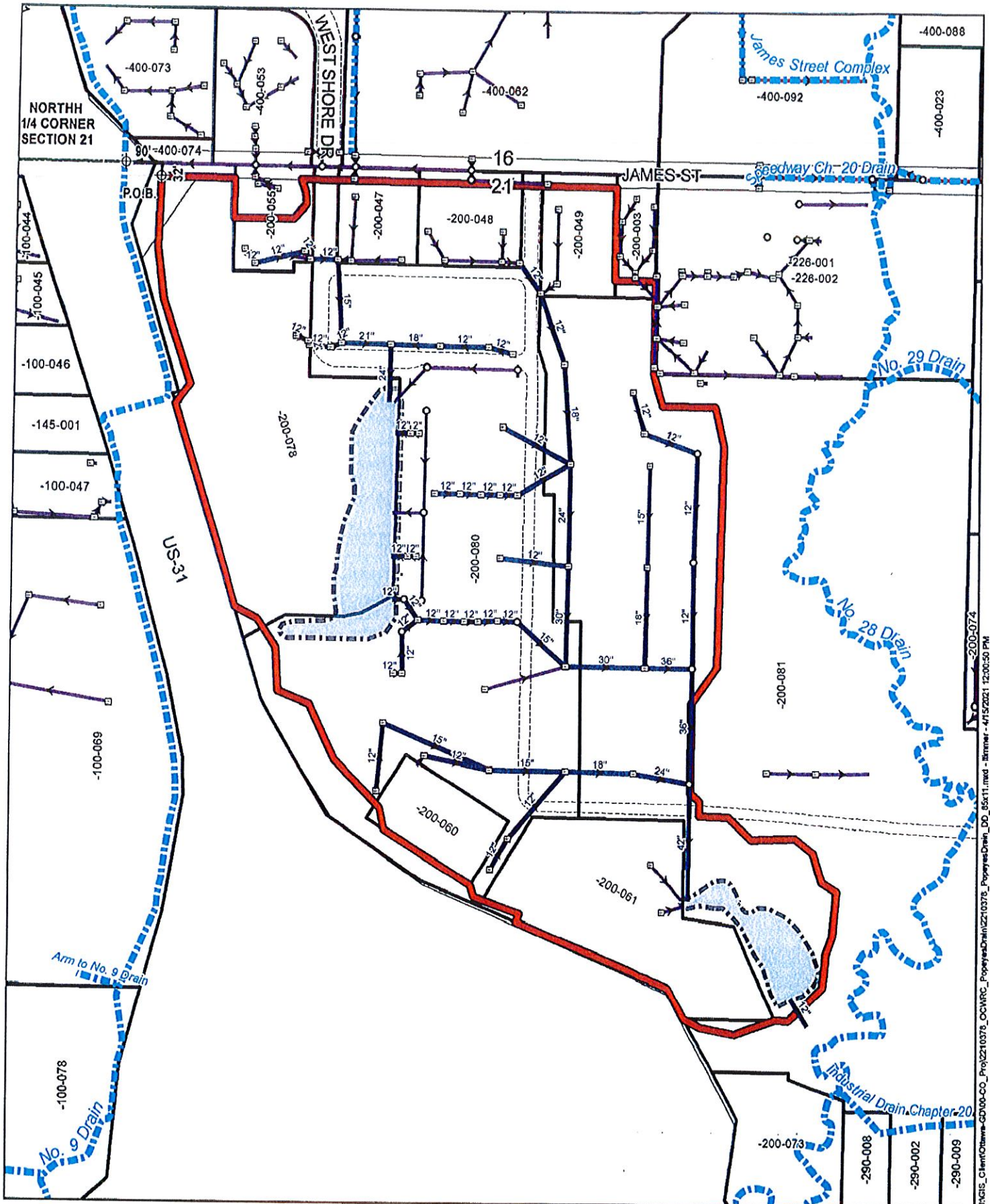


  
 SCALE: 1" = 300'

- LEGEND**
-  PROP. POPEYES DRAIN
  -  OTHER COUNTY DRAINS
  -  OTHER STORM SEWER
  -  PROP. POPEYES DRAIN DETENTION PONDS
  -  CATCH BASIN
  -  MANHOLE
  -  RIGHTS-OF-WAY
  -  SECTION BOUNDARY

OTTAWA COUNTY WATER RESOURCES COMMISSIONER  
 SECTION 21  
 HOLLAND CHARTER TOWNSHIP  
**EXHIBIT A:**  
**POPEYES ROUTE AND COURSE**  
 Prein & Newhof  
 2210378

J:\GIS\_Client\Kottawa-GD00-CO\_Proj\2210378\_CCWRC\_PopeyesDrain\2210378\_PopeyesDrain\_R&C\_85x11.mxd - 4/15/2021 11:36:35 AM



J:\GIS\_Client\Ottawa-GD\00-CC\_Proj\210378\_OC\WRC\_PopeyesDrain\210378\_PopeyesDrain\_DD\_85x11.mxd - 11/19/01 - 4:15:20 PM

**LEGEND**

- |                                     |                  |
|-------------------------------------|------------------|
| POPEYES DRAIN DRAINAGE DISTRICT     | CATCH BASIN      |
| PROP. POPEYES DRAIN                 | MANHOLE          |
| PROP. POPEYES DRAIN DETENTION PONDS | RIGHTS-OF-WAY    |
| OTHER STORM SEWER                   | SECTION BOUNDARY |
| OTHER STORM SEWER                   |                  |

OTTAWA COUNTY WATER RESOURCES COMMISSIONER

SECTION 21  
HOLLAND CHARTER TOWNSHIP

**EXHIBIT B:**  
**POPEYES DRAIN DRAINAGE DISTRICT**

Prein&Newhof  
2210378



SCALE: 1" = 300'