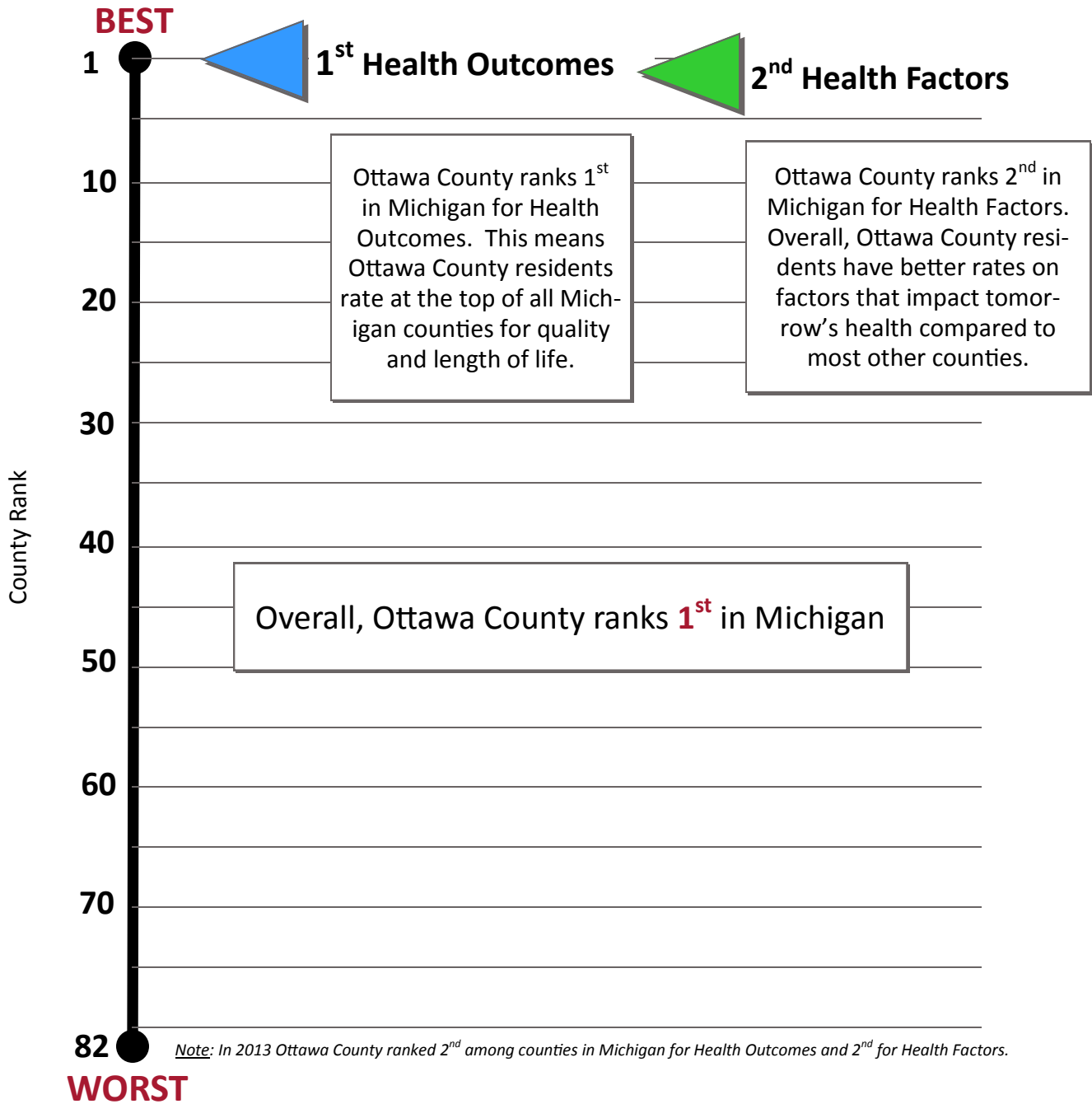




2014 County Health Rankings Report OTTAWA COUNTY



Note: Counties in Michigan were ranked from 1 (best) to 82 (worst), as Keweenaw County was not ranked.



County Health Rankings
Mobilizing Action Toward Community Health
www.countyhealthrankings.com

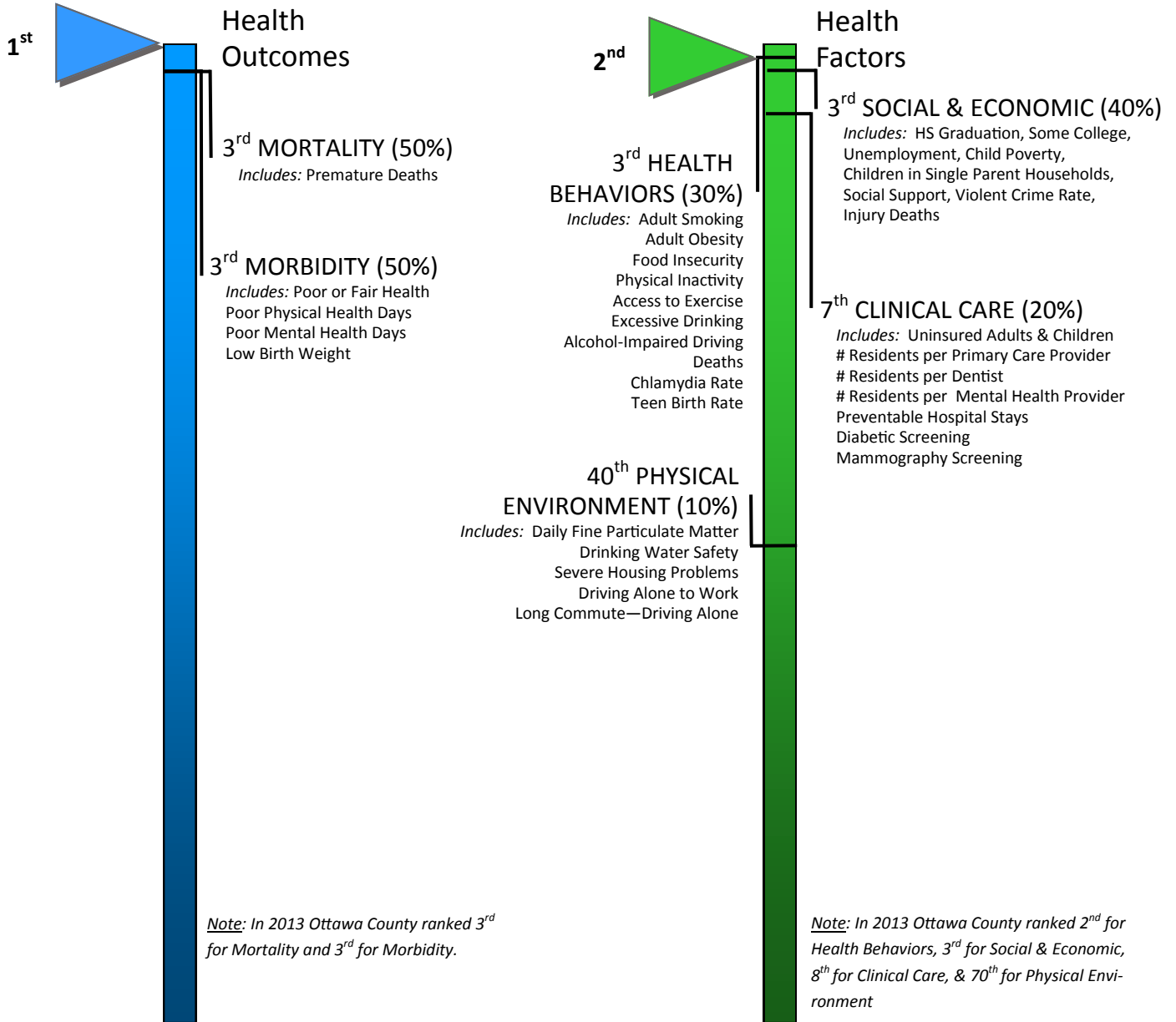
County Health Rankings is a program of the Robert Wood Johnson Foundation and the University of Wisconsin Population Health Institute.

NOTE: Extensive and detailed information about each data source is available at www.countyhealthrankings.org

Template developed by Anne Barna, MA, Health Analyst for Barry-Eaton District Health Department

Detailed Rankings OTTAWA COUNTY

Each of the health ranking main categories is comprised of two or more sub-rankings which are themselves composed of a combination of different indicators.



Ottawa County ranks 1st in Michigan for Health Outcomes.
Our sub-rankings are the same for premature deaths and for sickness.

Ottawa County ranks 2nd in Michigan for Health Factors.
The sub-rankings address a variety of health factors that influence health outcomes. The sub-groups comprise differing proportions of the final rank; health behaviors (30%) have a greater influence than the physical environment (10%), for example.

2014 Ottawa SNAPSHOT

		Ottawa County	Target Value	Michigan	Rank (of 82)
Health Outcomes					1 ↑
Mortality					3 ↔
Premature death	(50%)	4,734	≤ 5,317	7,254	
Morbidity					3 ↑
Poor or fair health	(10%)	10%	≤ 10%	14%	
Poor physical health days	(10%)	2.6	≤ 2.5	3.6	
Poor mental health days	(10%)	2.8	≤ 2.4	3.7	
Low birth weight	(20%)	6.3%	≤ 6.0%	8.4%	
Health Factors					2 ↑
Health Behaviors					3 ↓
Adult smoking	(10%)	16%	≤ 14%	20%	
Adult obesity	(5%)	26%	≤ 25%	32%	
Food environment index	(2%)	8.2	≥ 8.7	7.5	
Physical inactivity	(2%)	20%	≤ 21%	24%	
Access to exercise opportunities	(1%)	70%	≥ 85%	78%	
Binge & heavy drinking	(2.5%)	19%	≤ 10%	18%	
Alcohol-impaired driving deaths	(2.5%)	21%	≤ 14%	31%	
Chlamydia rate	(2.5%)	214	≤ 123	502	
Teen birth rate	(2.5%)	19	≤ 20	32	
Clinical Care					7 ↑
Uninsured adults/children	(5%)	12%	≤ 11%	14%	
Primary care provider ratio	(3%)	1,752:1	≤ 1,051:1	1,268:1	
Dentist ratio	(1%)	1,953:1	≤ 1,439:1	1,557:1	
Mental health provider ratio	(1%)	901:1	≤ 536:1	676:1	
Preventable hospital stays	(5%)	38	≤ 46	70	
Diabetic screening	(2.5%)	89%	≥ 90%	85%	
Mammography screening	(2.5%)	68%	≥ 71%	65%	
Social & Economic Factors					3 ↔
High school graduation rate	(5%)	85%	N/A	76%	
Some college	(5%)	67%	≥ 70%	65%	
Unemployment rate	(10%)	6.8%	≤ 4.4%	19.1	
Children in poverty	(10%)	13%	≤ 13%	25%	
Inadequate social support	(2.5%)	14%	≤ 14%	20%	
Children in single-parent hh	(2.5%)	20%	≤ 20%	33%	
Violent crime rate	(2.5%)	166	≤ 64	478	
Injury death rate	(2.5%)	42	≤ 49	59	
Physical Environment					40 ↑
Air pollution-particulate matter	(2.5%)	12.2	≤ 9.5	11.5	
Drinking water safety	(2.5%)	0%	0%	1%	
Severe housing problems	(2%)	13%	≤ 9%	17%	
Driving alone to work	(2%)	84%	≤ 71%	83%	
Long commute-driving alone	(1%)	22%	≥ 15%	32%	