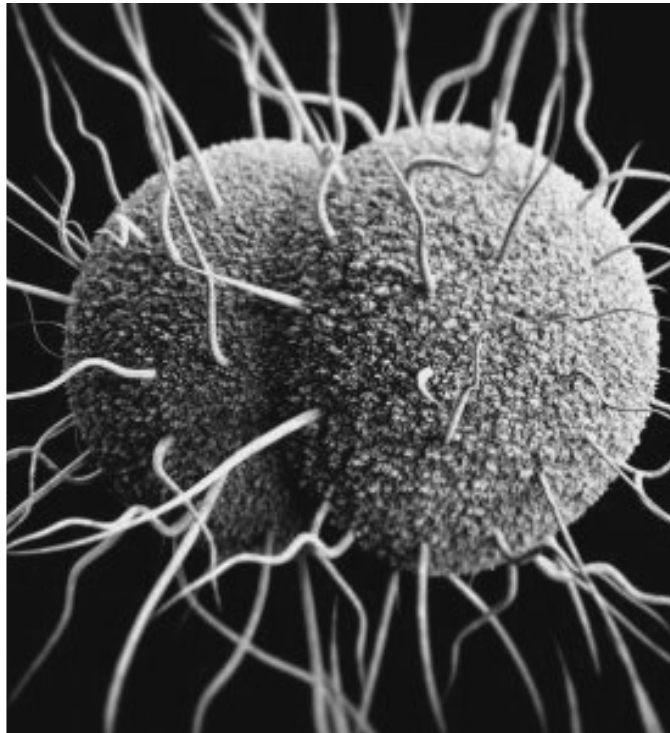




# 2016 Sexually Transmitted Disease Summary



12251 James Street  
Holland, MI 49424  
[www.miottawa.org/healthdata](http://www.miottawa.org/healthdata)

**Prepared  
July 2017**

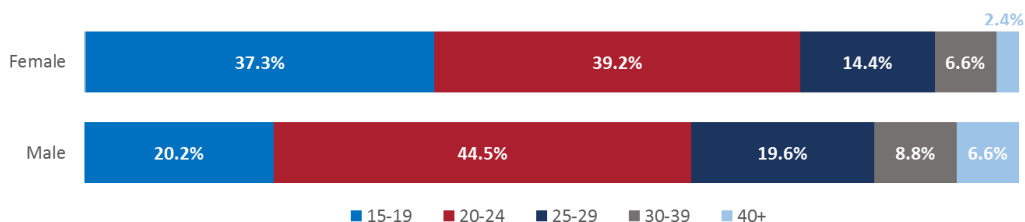
# 2016 Summary of Sexually Transmitted Diseases (STD) Reported to Ottawa County

## State of Michigan STD Information

This is a detailed summary of reported cases of selected sexually transmitted diseases in Ottawa County, Michigan during the 2016 calendar year.\* See the [2016 Annual Summary of Reportable Diseases](#) for information on all reportable diseases in Ottawa County. The Centers for Disease Control and Prevention (CDC) 2015 STD summary can be found [here](#).

**Chlamydia** – There were 848 confirmed cases of *Chlamydia trachomatis* infection reported among Ottawa County residents in 2016, similar to the revised count of 857 reported cases in 2015. No monthly case counts during 2016 exceeded the record of 97 set in October 2015.

- 577 of the cases (68%) were female and 271 of the cases (32%) were male.
- The age distribution of cases in 2016 ranged from 14 to 62 years of age, with a mean age of 23.1 years and a median age of 21 years. In both females and males, most reported infections occurred among 20-24 year olds.

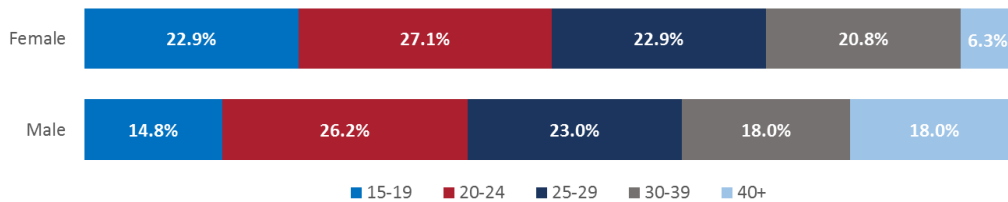


- A majority of cases were Caucasian (70.2%), followed by African American (6.5%) and Asian (4%). 11.2% were listed as unknown.
- Of the 418 cases who reported partner status, 279 (66.7%) reported having one current sexual partner, with 74 (17.7%) reporting two current partners.
- Co-infections with gonorrhea were not commonly reported among cases, with 36 (4.2%) also having a confirmed case of gonorrhea.
- 834 (98.2%) of chlamydia cases received antibiotic treatment.
- Among cases with either symptom onset or referral during 2016, 54 (6.4%) were considered to be repeat infections, meaning that the individual had more than one infection within the calendar year. This is half the repeat infections seen in 2015.
- The 49424 ZIP code (Holland, Park and Olive Townships) experienced the highest rate of chlamydia, with 675.6 infections per 100,000 people between the ages of 15 and 64. The 49423 (City of Holland) and 49460 (Port Sheldon Township) ZIP codes followed with rates of 622.3 and 501.1, respectively‡.

**Gonorrhea** – There were 109 confirmed cases of infection with *Neisseria gonorrhoeae* reported among Ottawa County residents, the highest known yearly count going back to 2001.

- 61 (56.0%) of the cases were male and 34 (44.0%) of the cases were female.

- The age distribution for these cases ranged from 16 to 55 years with a mean of 27.6 years and a median age of 25.0 years for all cases investigated. In both females and males, most reported infections occurred among 20-24 year olds.



- A majority of cases were Caucasian (64.2%), followed by African American (14.7%). 11.9% were listed as unknown.
- Co-infection with chlamydia occurred in 34 (31.2%).
- The southwest quadrant of Ottawa County (the City of Holland and Holland, Olive, Park and Port Sheldon Townships) experienced the highest rate of gonorrhea, with 86.2 infections per 100,000 people between the ages of 15 and 64<sup>‡</sup>.

**Human Immunodeficiency Virus (HIV) and Acquired Immunodeficiency Virus (AIDS)** – The reported prevalence of HIV/AIDS is 48.2 per 100,000 people living within Ottawa County<sup>†</sup>. It is estimated that 160 people are currently living with HIV/AIDS within Ottawa County, with 3 being newly diagnosed in 2016. Specific data is not always available on HIV/AIDS due to the low numbers seen within Ottawa County, however among those identified to be living with HIV/AIDS:

- 78% are male.
- Most are between ages 40-49 years (27% of identified cases) and 50-59 years (27% of identified cases), followed ages 30-39 years (14% of identified cases).
- 87% are currently seeking care. Among those seeking care, 95% are currently in a state of viral suppression ( $\leq 200$ c/mL).

**Syphilis** – There were 5 confirmed cases of primary and secondary syphilis reported in 2016 and 7 cases of latent syphilis.

- Primary & secondary syphilis: All cases were between the ages of 19 and 49, with a mean age of 35.4 years, and were males who reported having sex with men (MSM).
- Latent syphilis: The mean age for latent syphilis cases was 32.8 years. All cases were male. 57% of latent syphilis cases were identified as late latent.
- 30% of all syphilis cases investigated in 2016 were also HIV positive.

\* Differences in the reported number of some STDs may occur between this report and other Communicable Disease Report for Ottawa County, MI since the MDSS is a dynamic, continually active system: counts of disease are constantly changing as cases are investigated and audited.

<sup>†</sup> Michigan Department of Health and Human Services. (n.d.) *Annual Michigan HIV Surveillance Report – Tables*.

<sup>‡</sup> Based on the U.S. Census Bureau, 2012-2015 American Community Survey 5-year estimates for total population by ZIP Code and the U.S. Census Bureau 2010 ZIP Code Tabulation Area to County Relationship Files.

[www.mtottawa.org/healthdata](http://www.mtottawa.org/healthdata)

**Front Cover Image:** Computerized image of drug-resistant *Neisseria gonorrhoeae* diplococcal bacteria; from <https://phil.cdc.gov/phil/details.asp?pid=16874>