

Ottawa County Respiratory Illness Report

Submitted for Publication March 18, 2024

Dates of data may vary.



Scan code or click [HERE](#) to tell us
what you think of this report

Executive Summary

Influenza (Flu)

Influenza activity in Ottawa County remains elevated.

Influenza activity remains elevated in [Michigan](#) and across most of the [United States](#).

Coronavirus (COVID-19)

Ottawa County hospital occupancy indicators show a relatively low percent of patients hospitalized with COVID-19; Wastewater signals from Allendale and Grand Haven-Spring Lake remain relatively low and stable.

The weekly rate of new COVID-19 hospitalizations per 100,000 population is decreasing in both [Michigan](#) and the [United States](#).

Respiratory Syncytial Virus (RSV)

Ottawa County surveillance data shows a decreasing trend in local RSV activity. RSV activity in [Michigan](#) and across the [United States](#) remains relatively low and stable.

Influenza Surveillance

MMWR Week 10: March 3, 2024 – March 9, 2024*

Influenza Test Positivity in the USA and Ottawa County

Figure 1: Positivity Rate* of Influenza Tests by Week, Ottawa County and United States

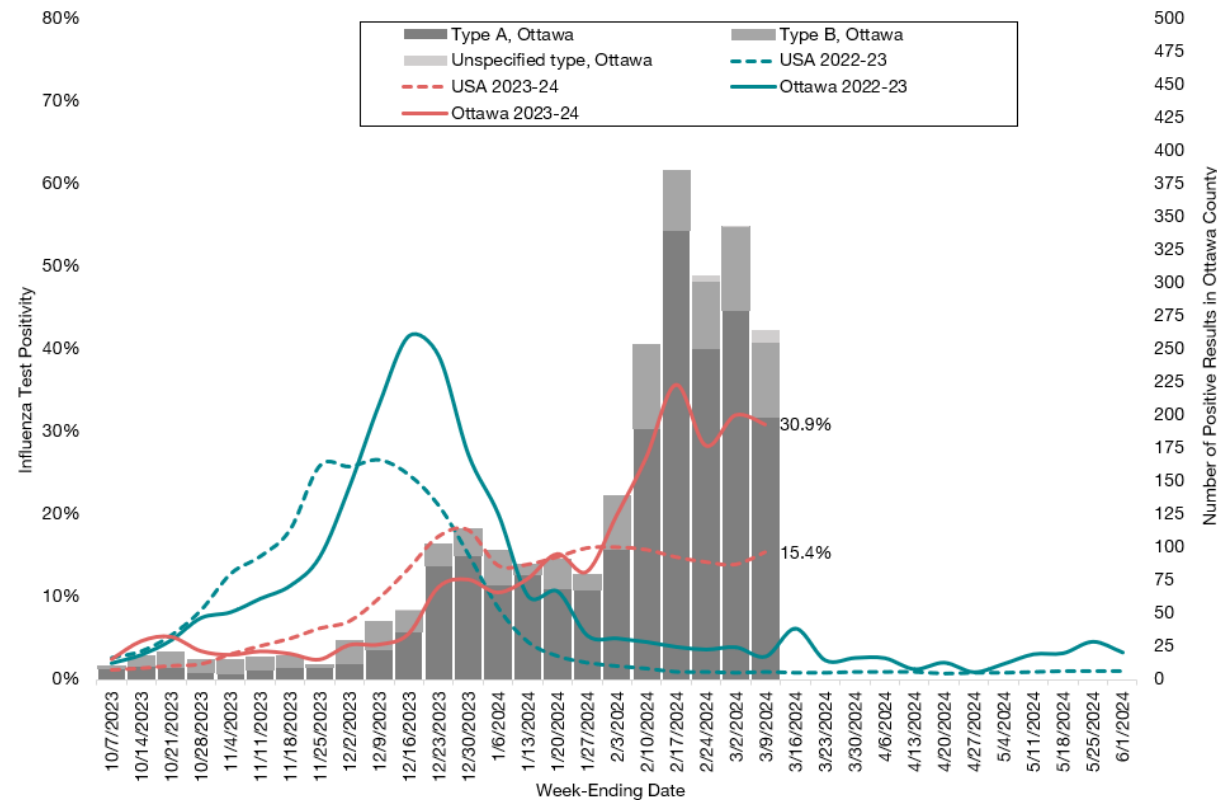


Table 1: Influenza Positive Tests Reported in Ottawa County – Last 8 Weeks

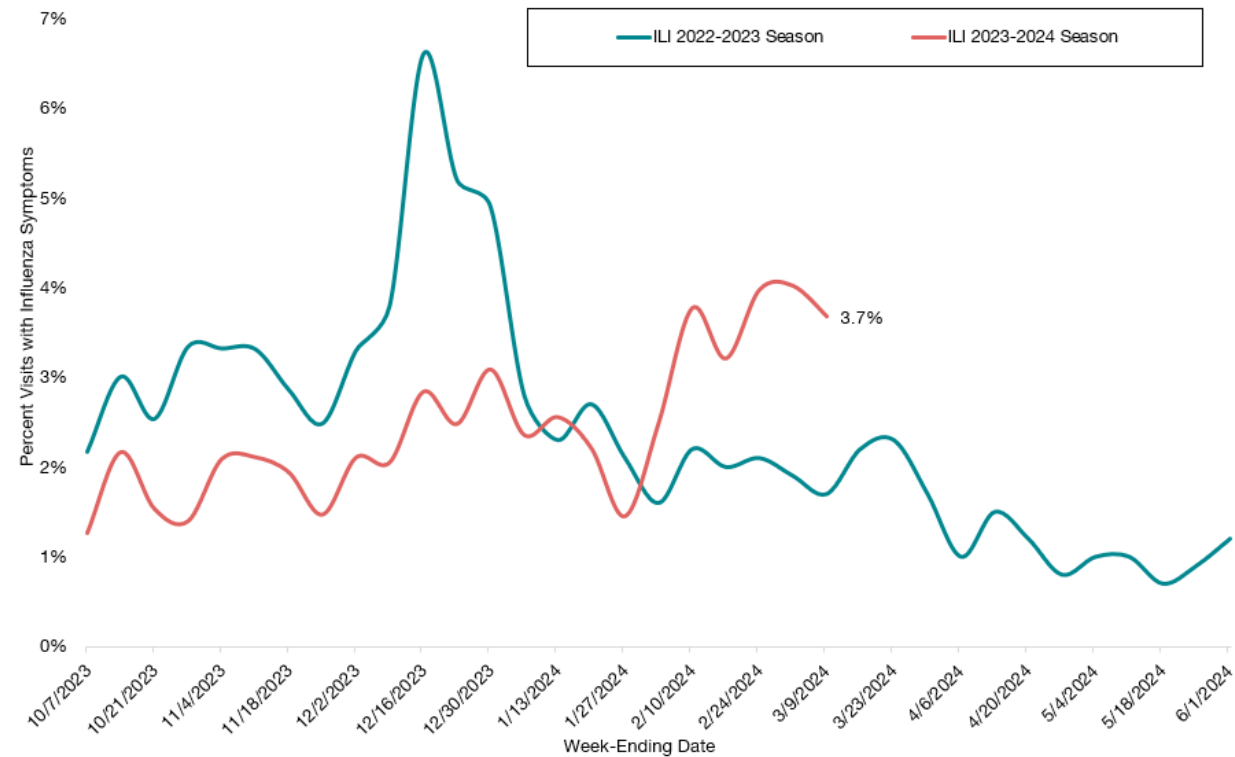
Week-Ending Date	Type A	Type B	Unspecified	Total Influenza	Total Tested	Positivity
1/20/2024	69	22	0	91	598	15.2%
1/27/2024	68	11	0	79	604	13.1%
2/3/2024	99	40	0	139	700	19.9%
2/10/2024	190	63	0	253	941	26.9%
2/17/2024	340	45	0	385	1079	35.7%
2/24/2024	250	51	4	305	1077	28.3%
3/2/2024	279	63	1	343	1072	32.0%
3/9/2024	198	57	9	264	855	30.9%

*Influenza positivity is the percent of influenza tests conducted by reporting providers and laboratories that result positive. Elevated influenza positivity is often an indication that influenza is circulating in the community.

- During week 10, influenza test positivity in Ottawa County decreased to 30.9% from 32.0% the previous week. The number of influenza tests decreased by 20% from the previous week, from 1072 to 855.
- The latest influenza positivity estimate in Ottawa County is much higher than that reported at a similar time last influenza season (2.8%).
- Seasonal influenza activity remains elevated with increases noted in some parts of the country. National influenza test positivity remained elevated at 13.9%.

Syndromic Surveillance for Influenza in Ottawa County

Figure 2: Percentage of Emergency Department (ED) and Urgent Care (UC) Visits in Ottawa County with Influenza-like Illnesses (ILI)*



*Influenza-like illness include sudden onset of fever, cough and/or sore throat.

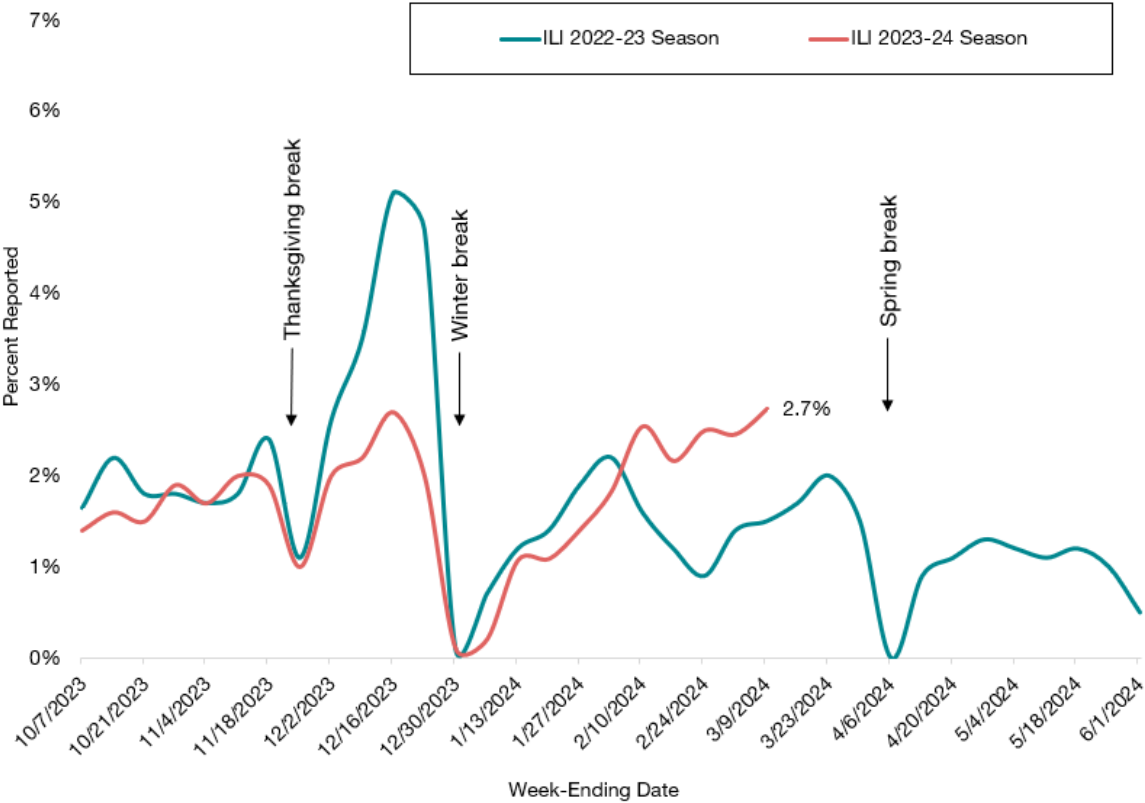
Table 2: Emergency Department and Urgent Care Visits with Influenza-like Illnesses in Ottawa County – Last 8 Weeks

MMWR Week	Week-Ending Date	ILI Visits	Total ED/UC Visits	Percent of ED/UC Visits
3	1/20/2024	44	1988	2.2%
4	1/27/2024	31	2127	1.5%
5	2/3/2024	55	2205	2.5%
6	2/10/2024	91	2412	3.8%
7	2/17/2024	77	2397	3.2%
8	2/24/2024	102	2565	4.0%
9	3/2/2024	107	2661	4.0%
10	3/9/2024	98	2662	3.7%

- During week 10, Ottawa County Emergency Department and Urgent Care visits with ILI reported decrease to 3.7% from 4.0% the previous week.

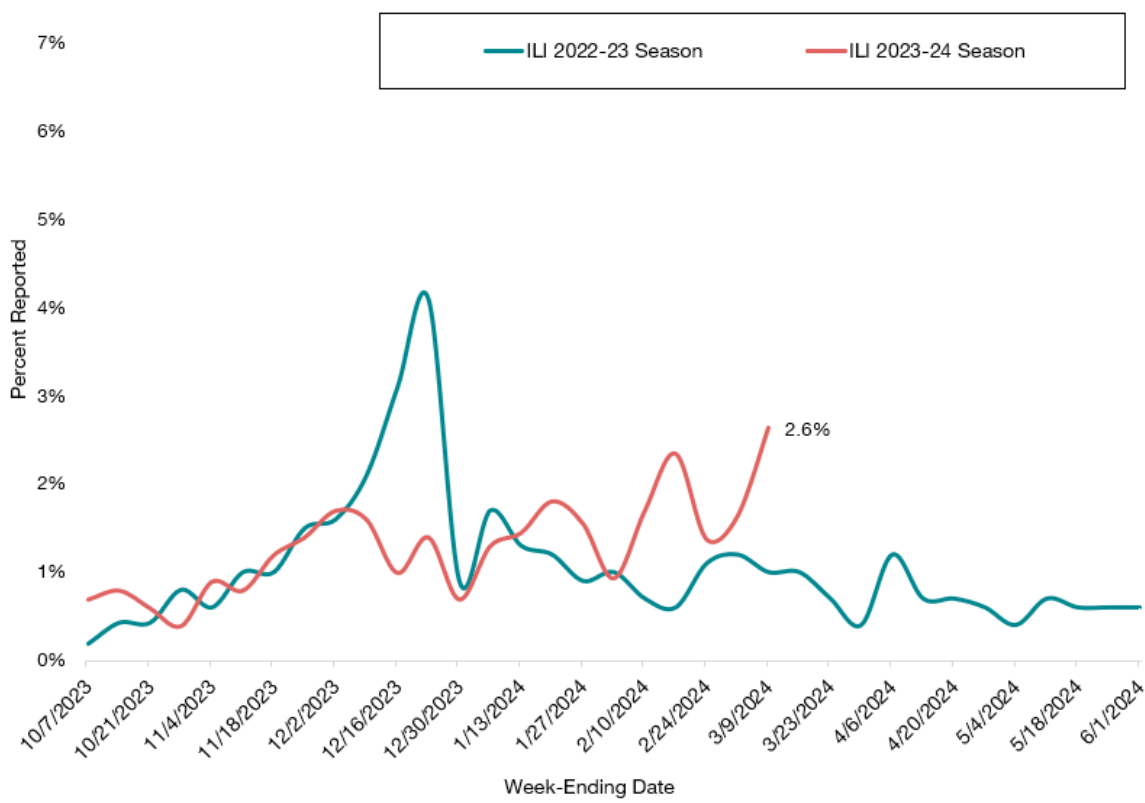
Influenza-Like Illness (ILI) Surveillance from Reporting Schools, Child care and Healthcare Settings

Figure 3: Percent ILI in Schools and Child care by Week



- During week 10, the proportion of ILI reported in school/child care settings was 2.7% slightly higher than that reported the previous week. The proportion of ILI reported in week 10 is higher than that reported at the same time last season (1.5%).

Figure 4: Percent Healthcare ILI Visits by Week



- Reported ILI in healthcare offices was 2.6% during week 10.
- There have been two reported influenza outbreaks in long-term care facilities (LTCFs) during the 2023-24 season in Ottawa County. No new LTCF influenza outbreaks were reported in week 10.

Influenza-Associated Pediatric Mortality & Vaccine Coverage

Influenza-Associated Pediatric Mortality

Table 3: Influenza-associated Pediatric Mortality

	2023-24 Season (YTD)	2022-23 Season (YTD)	2022-23 Season Total
Ottawa County	0	0	0
Michigan	1	0	4
United States	116	170	184

Note: All data are preliminary and may change as more reports are received.

Influenza Vaccination Coverage

- The best way to reduce the risk of getting the seasonal flu and its potentially serious complications is to get vaccinated every year. Over the past five influenza seasons, average vaccination coverage in Ottawa County hovered around 40%. Table 4 below reflects total vaccination coverage rate in Ottawa County and statewide (Michigan) over the last five seasons and through March 9 this season.

Table 4: Influenza Vaccination Rates in Ottawa County and Michigan, Previous Five Seasons and 2023-24 Season YTD

	2018-19 Season	2019-20 Season	2020-21 Season	2021-22 Season	2022-23 Season	2023-24 Season (YTD)
Ottawa County	39%	40.2%	42.9%	40.1%	35.4%	30.2%
Michigan	30.3%	31.6%	34.3%	31.8%	29.2%	25.3%
Healthy People 2030 Target	70%	70%	70%	70%	70%	70%

YTD = Year To Date

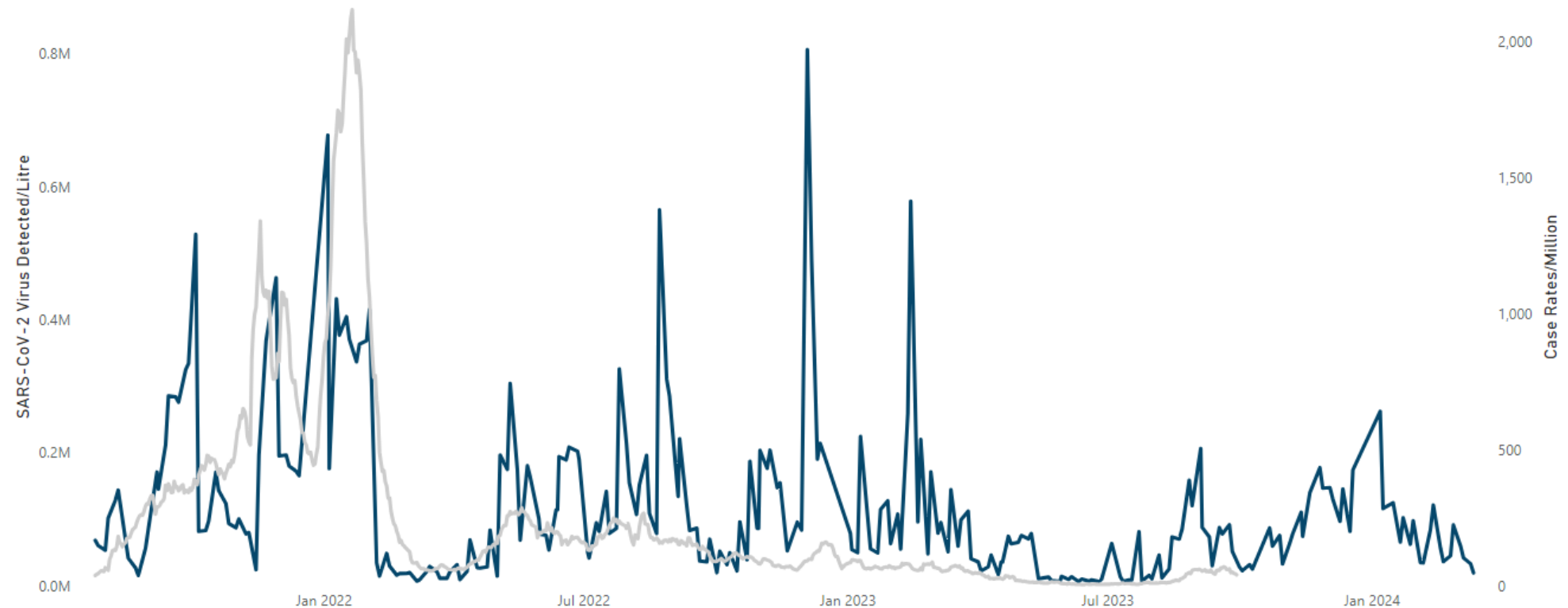
Coronavirus (COVID-19) Surveillance

Dates of data may vary.

Allendale Wastewater Surveillance

SARS-CoV-2 Virus Detected/Litre by Sample Date With COVID-19 Case Rates/Million by Referral Date (7-Day Averages)

● SARS-CoV-2 Virus Detected/Litre ● Case Rates/Million



Data Interpretation: The **blue line** on the graph shows the 7-day average levels of SARS-CoV-2 virus (N2 markers) detected in wastewater sampled from the treatment plant in Allendale. The **gray line** on the graph represents the 7-day average COVID-19 case rates/million for all of Ottawa County by referral date.

Notes: Use of at home tests since late 2021 likely reduces the number of positive tests reported to Public Health, resulting in artificially deflated case rates. Display of wastewater data may change as analytical methods are refined. County case rate calculation was discontinued on September 27, 2023 due to limited resources to maintain data.

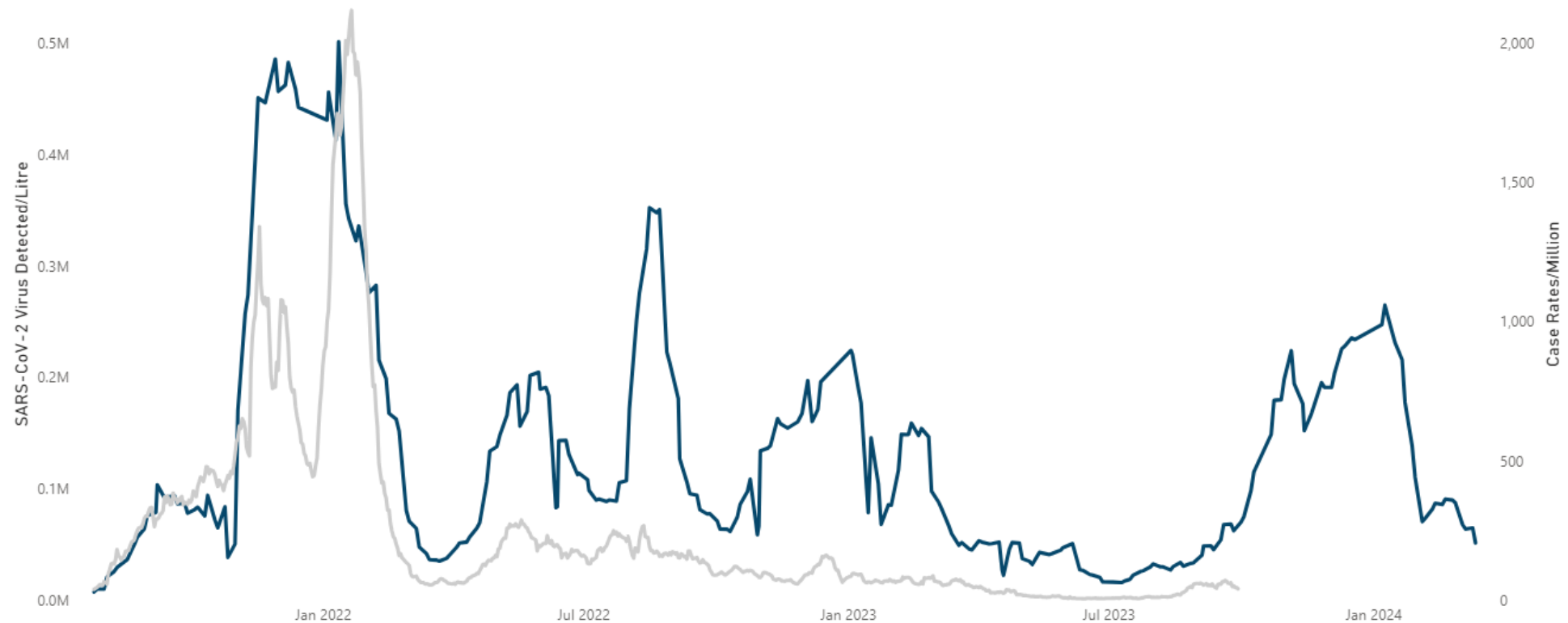
Source: Grand Valley State University Annis Water Resources Institute as part of the MDHHS SEWER-Network, Ryan Otter, Ph.D. (otterr@gvsu.edu)

Additional Information: [Michigan COVID-19 Wastewater Surveillance Pilot Project \(arcgis.com\)](https://arcgis.com), [Coronavirus - Sentinel Wastewater Epidemiology Evaluation Project \(SWEEP\) \(michigan.gov\)](https://michigan.gov)

Grand Haven-Spring Lake Wastewater Surveillance

SARS-CoV-2 Virus Detected/Litre by Sample Date With COVID-19 Case Rates/Million by Referral Date (7-Day Averages)

● SARS-CoV-2 Virus Detected/Litre ● Case Rates/Million



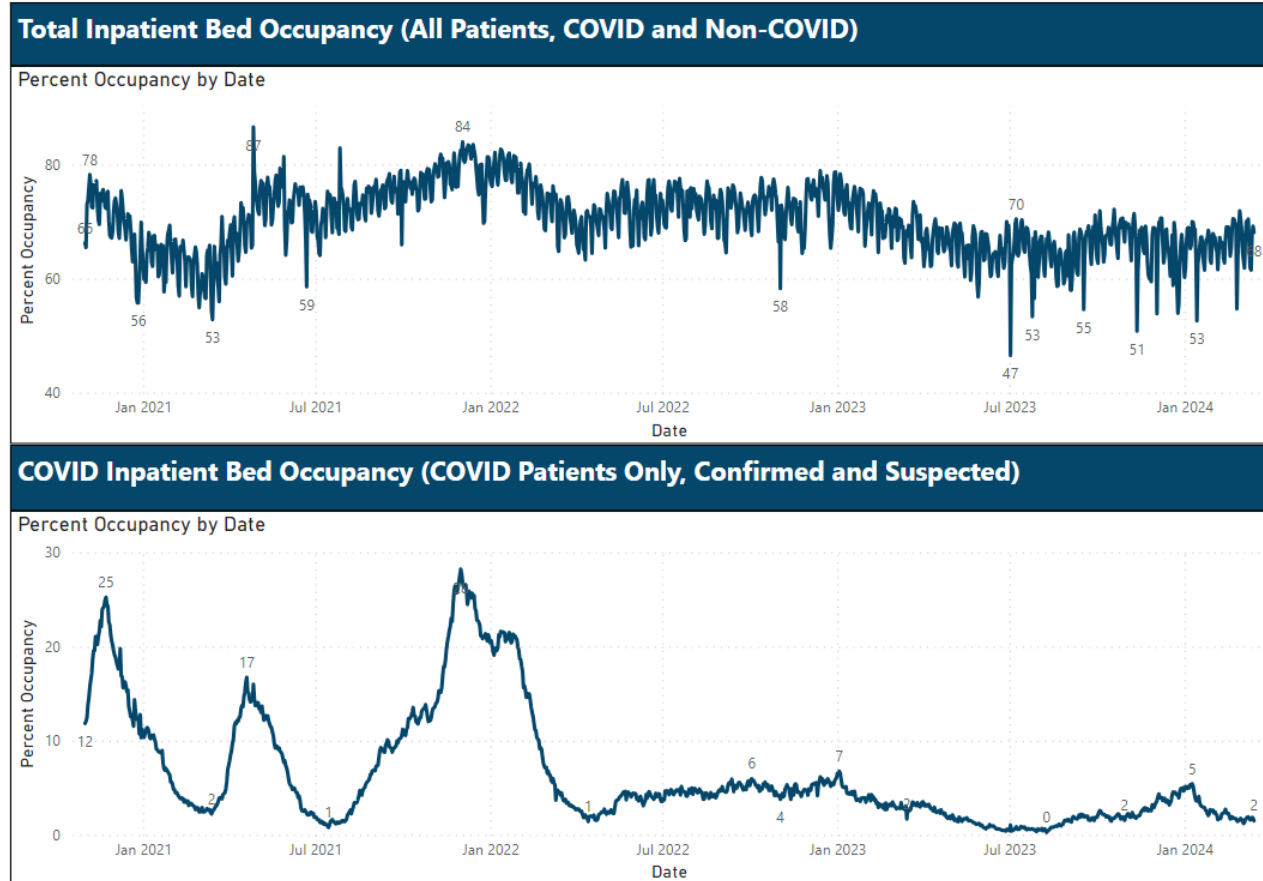
Data Interpretation: The **blue line** on the graph shows the 7-day average levels of SARS-CoV-2 virus (N2 markers) detected in wastewater sampled from the treatment plant in Grand Haven / Spring Lake. The **gray line** on the graph represents the 7-day average COVID-19 case rates/million for all of Ottawa County by referral date.

Notes: Use of at home tests since late 2021 likely reduces the number of positive tests reported to Public Health, resulting in artificially deflated case rates. Display of wastewater data may change as analytical methods are refined. County case rate calculation was discontinued on September 27, 2023 due to limited resources to maintain data.

Source: Grand Valley State University Annis Water Resources Institute as part of the MDHHS SEWER-Network, Ryan Otter, Ph.D. (otterr@gvsu.edu)

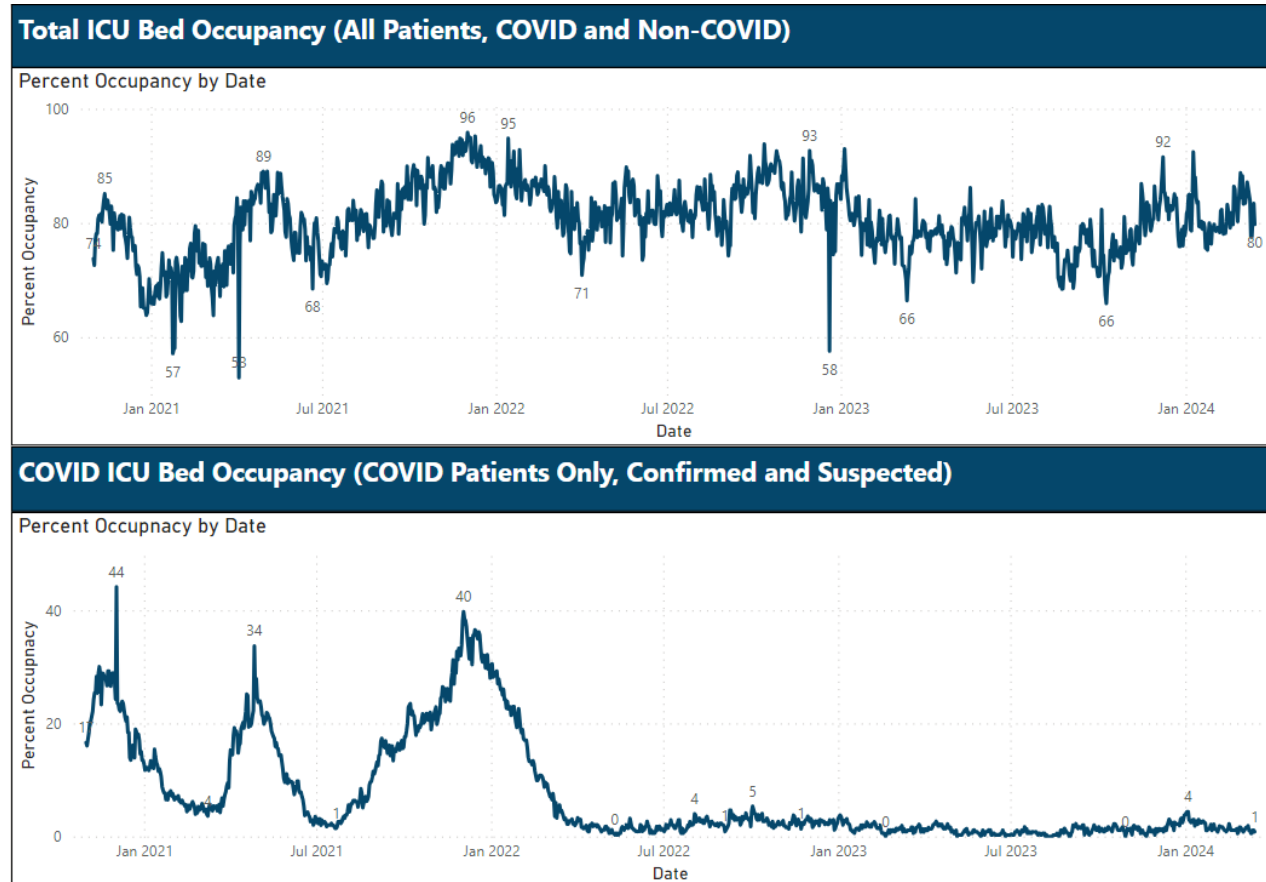
Additional Information: [Michigan COVID-19 Wastewater Surveillance Pilot Project \(arcgis.com\)](https://arcgis.com), [Coronavirus - Sentinel Wastewater Epidemiology Evaluation Project \(SWEEP\) \(michigan.gov\)](https://michigan.gov)

Ottawa County Inpatient Bed Occupancy



- Total hospital bed occupancy is 68%.
- Currently, 2% of all inpatient beds are occupied by COVID-19 patients.

Ottawa County Intensive Care Unit (ICU) Bed Occupancy

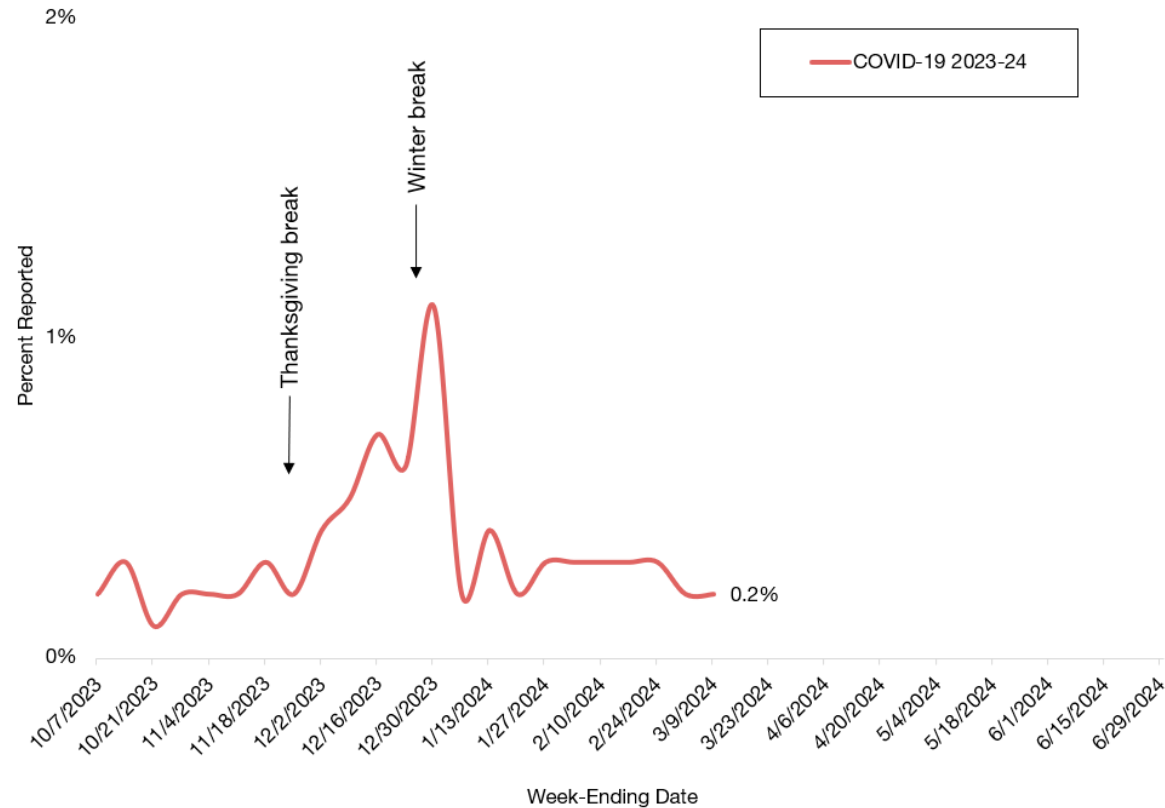


ICU = Intensive Care Unit

- Total ICU bed occupancy varies considerably by day. Currently, ICU bed occupancy is 80%.
- As of March 14, 2024, 1% of ICU beds were occupied by COVID-19 patients.

COVID-19 Surveillance from Reporting Schools/Child care Facilities

Figure 5: Percent COVID-19 Cases Reported* by Week, Ottawa County Schools and Child cares



*Not all schools/childcare facilities in Ottawa County report each week. Over the last eight weeks an average of about 21 schools/child care facilities reported cases weekly.

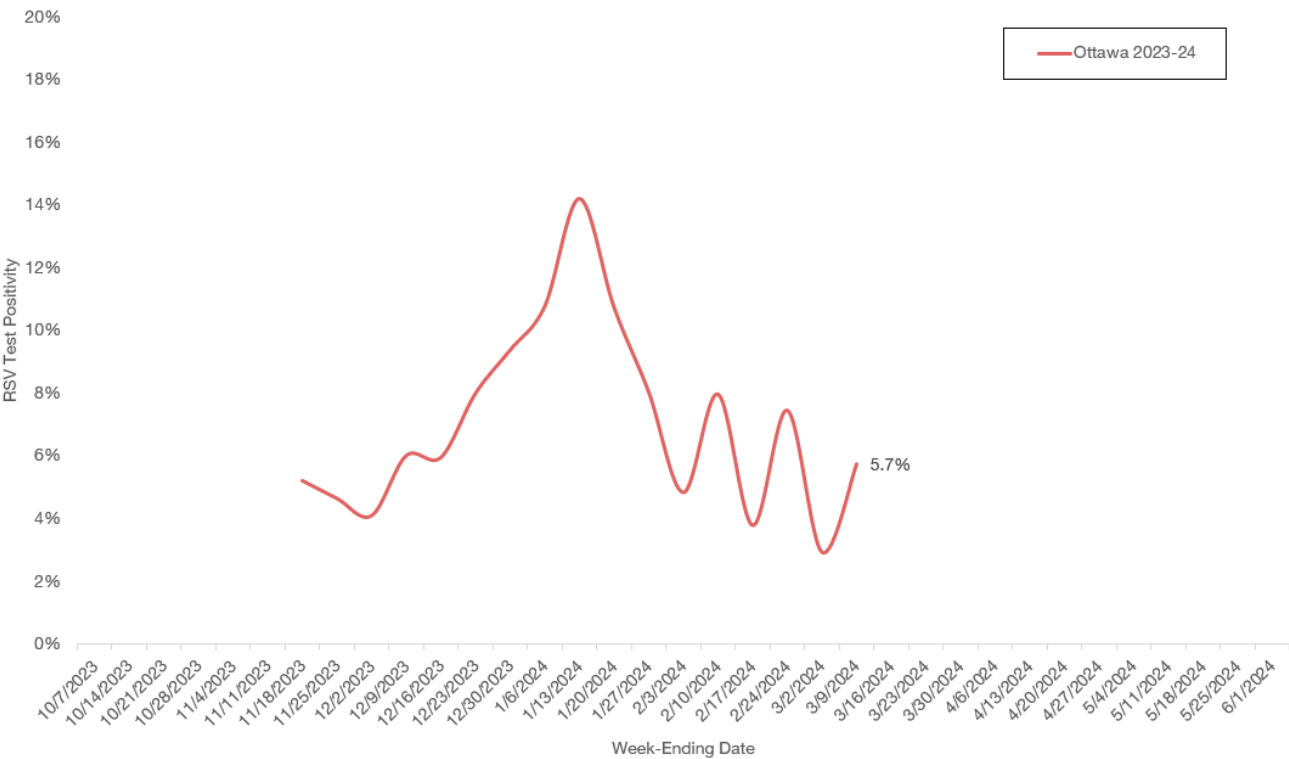
- During week 10, the proportion of COVID-19 student/staff cases reported in Ottawa County school/child care settings was 0.2%, the same as that reported the previous week.
- The surveillance system supporting this data source is new as of Fall 2023. As a novel surveillance system, it will continue to be monitored for its utility in describing COVID-19 activity in schools and child care settings.

Respiratory Syncytial Virus (RSV) Surveillance

MMWR Week 10: March 3, 2024 – March 9, 2024

RSV Test Positivity in Ottawa County

Figure 6: Positivity Rate* of RSV Tests by Week, Ottawa County



*RSV positivity is the percent of RSV tests conducted by reporting laboratories that have a positive result. Data includes predominately PCR results. Ottawa data is weekly percentages; data is not smoothed with 3- or 5-week moving averages.

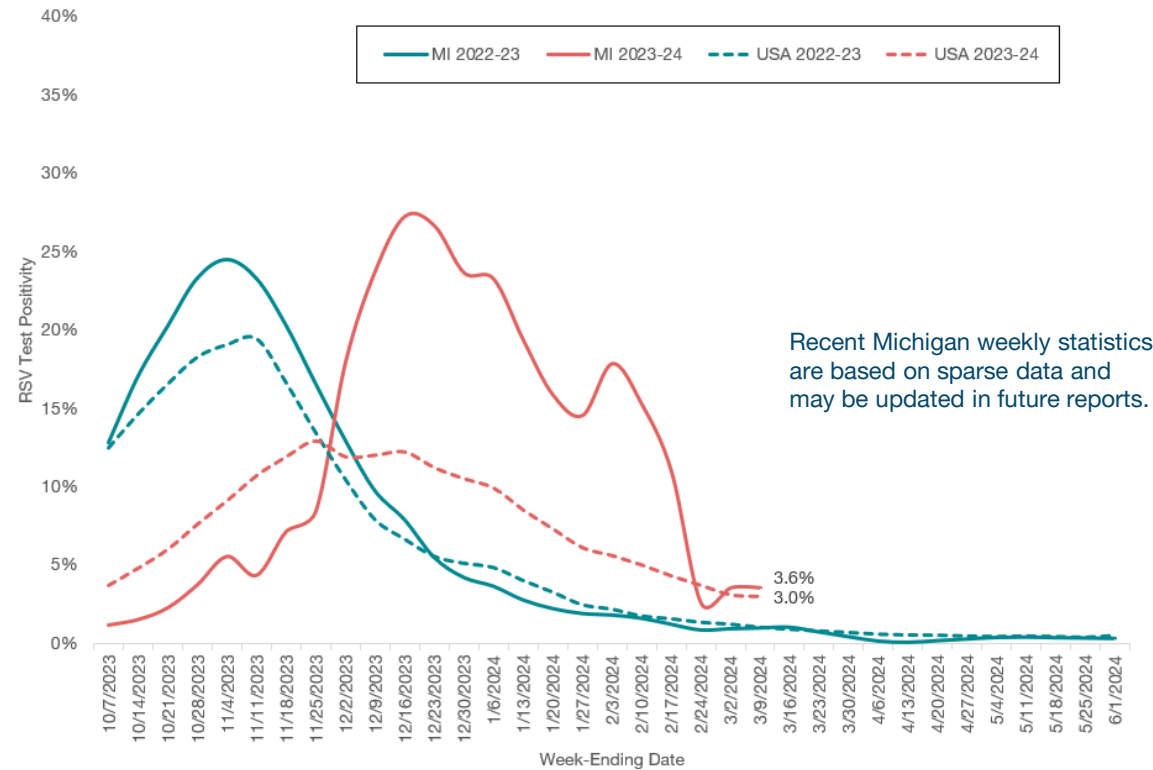
Table 5: RSV Positive Tests Reported in Ottawa County – Last 8 Weeks

MMWR Week	Week-Ending Date	Total RSV	Total Tested	Positivity
3	1/20/2024	23	214	10.7%
4	1/27/2024	16	199	8.0%
5	2/3/2024	10	207	4.8%
6	2/10/2024	22	276	8.0%
7	2/17/2024	11	291	3.8%
8	2/24/2024	24	322	7.5%
9	3/2/2024	9	308	2.9%
10	3/9/2024	7	122	5.7%

- During week 10, Ottawa County RSV positivity increased to 5.7%.
- The surveillance system supporting this data source is new as of Fall 2023. As a novel surveillance system, it will continue to be monitored for its utility in describing RSV activity in Ottawa County.

RSV Test Positivity in the United States and Michigan

Figure 7: Positivity Rate* of RSV PCR Tests by Week, United States and Michigan

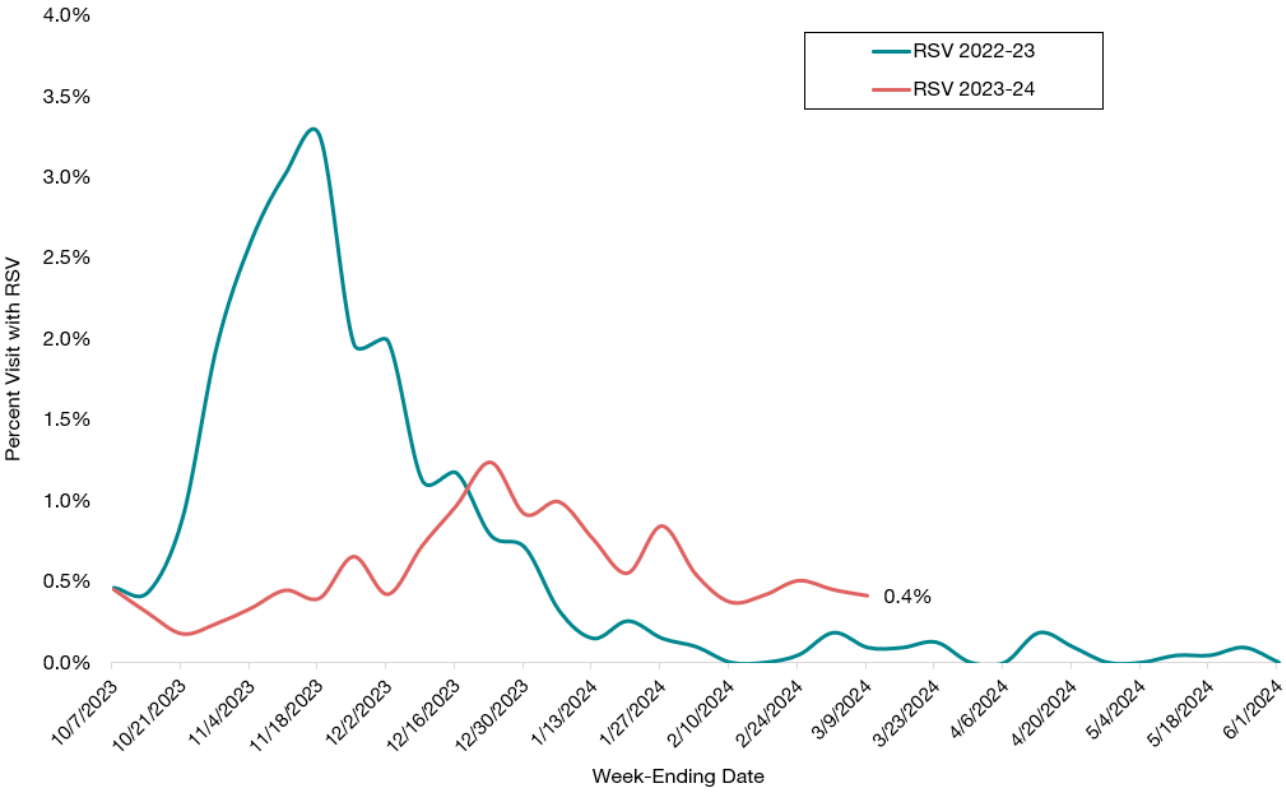


*RSV positivity is the percent of RSV PCR tests conducted by reporting laboratories that have a positive result. Michigan data displayed are 3-week moving averages. US data displayed are 5-week moving averages.
Note: Due to reporting delays, recent statistics may be updated as more data is obtained.

- During week 10, RSV positivity in the US slightly decreased to 3.0%.
- Michigan RSV positivity remained the same at 3.6% during week 10.

Syndromic Surveillance for RSV in Ottawa County

Figure 8: Percentage of Emergency Department (ED) and Urgent Care (UC) Visits in Ottawa County with Respiratory Syncytial Virus (RSV) Illness



Note: Data includes all ages.

Table 6: Emergency Department and Urgent Care Visits with RSV Illnesses in Ottawa County – Last 8 Weeks

MMWR Week	Week-Ending Date	RSV Visits	Total ED/UC Visits	Percent of ED/UC Visits
3	1/20/2024	11	1988	0.6%
4	1/27/2024	18	2127	0.8%
5	2/3/2024	12	2205	0.5%
6	2/10/2024	9	2412	0.4%
7	2/17/2024	10	2397	0.4%
8	2/24/2024	13	2565	0.5%
9	3/2/2024	12	2661	0.5%
10	3/9/2024	11	2662	0.4%

- During week 10, Ottawa County Emergency Department and Urgent Care visits with RSV illnesses decreased slightly to 0.4% from 0.5% the previous week.

Additional Resources

Influenza (Flu):

- National influenza surveillance data are available at: <https://www.cdc.gov/flu/weekly/index.htm>
- Statewide influenza surveillance reports are available at: <https://www.michigan.gov/flu/surveillance/past-michigan-flu-focus-surveillance-reports>
- State and county level influenza vaccination coverage data are available at: <https://www.michigan.gov/flu/flu-dashboard>
- Disease burden of flu in the United States: <https://www.cdc.gov/flu/about/burden/index.html>
- Preventing Seasonal Flu: <https://www.cdc.gov/flu/prevent/index.html>
- Seasonal flu vaccine effectiveness studies: <https://www.cdc.gov/flu/vaccines-work/effectiveness-studies.htm>
- Flu vaccine finder: <https://www.vaccines.gov/find-vaccines/>
- Healthy People 2030 Flu Vaccination Objective: [Increase the proportion of people who get the flu vaccine every year — IID-09 - Healthy People 2030 | health.gov](#)

Coronavirus (COVID-19) Resources:

- CDC COVID Data Tracker: <https://covid.cdc.gov/covid-data-tracker/#datatracker-home>
- Michigan COVID-19 Website: <https://www.michigan.gov/Coronavirus>
- Michigan Wastewater Dashboard: <https://www.michigan.gov/coronavirus/stats/wastewater-surveillance/dashboard/sentinel-wastewater-epidemiology-evaluation-project-sweep>

Respiratory Syncytial Virus (RSV) Resources:

- National RSV Information: <https://www.cdc.gov/rsv/index.html>
- Preventing RSV: <https://www.cdc.gov/rsv/about/prevention.html>
- National RSV surveillance data are available at: <https://www.cdc.gov/surveillance/nrevss/rsv/index.html>

Multiple Respiratory Illnesses Resources:

- Centers for Disease Control (CDC) [Health Alert Network \(HAN\) Health Advisory](#) issued December 14, 2023.

Data Sources

Influenza (Flu) and Influenza-Like Illness (ILI) Data Sources:

- USA Positivity Rate from Weekly U.S. Influenza Surveillance Report: <https://www.cdc.gov/flu/weekly/index.htm#ClinicalLaboratories>
- Ottawa County Positivity Rate is calculated from data reported by providers and laboratories in the community through weekly reporting.
- ILI ED and UC visit data is pulled from Michigan Syndromic Surveillance System (MSSS).
- ILI data in schools/childcare facilities is provided by facilities in the community through weekly reporting.
- ILI healthcare visit data is provided by providers and laboratories in the community through weekly reporting.
- Vaccination data from Michigan Flu Dashboard: <https://www.michigan.gov/flu/flu-dashboard>

Coronavirus (COVID-19) Data Sources:

- Inpatient and ICU Hospitalization data from EMResource.
- COVID-19 cases in schools/childcare facilities are reported by the facility through an online weekly reporting system.

Respiratory Syncytial Virus (RSV) Data Sources:

- National influenza surveillance data are available at: <https://www.cdc.gov/flu/weekly/index.htm>
- RSV ED and UC visit data is pulled from Michigan Syndromic Surveillance System (MSSS).
- USA and MI RSV positivity are available at: <https://www.cdc.gov/surveillance/nrevss/rsv/index.html>