










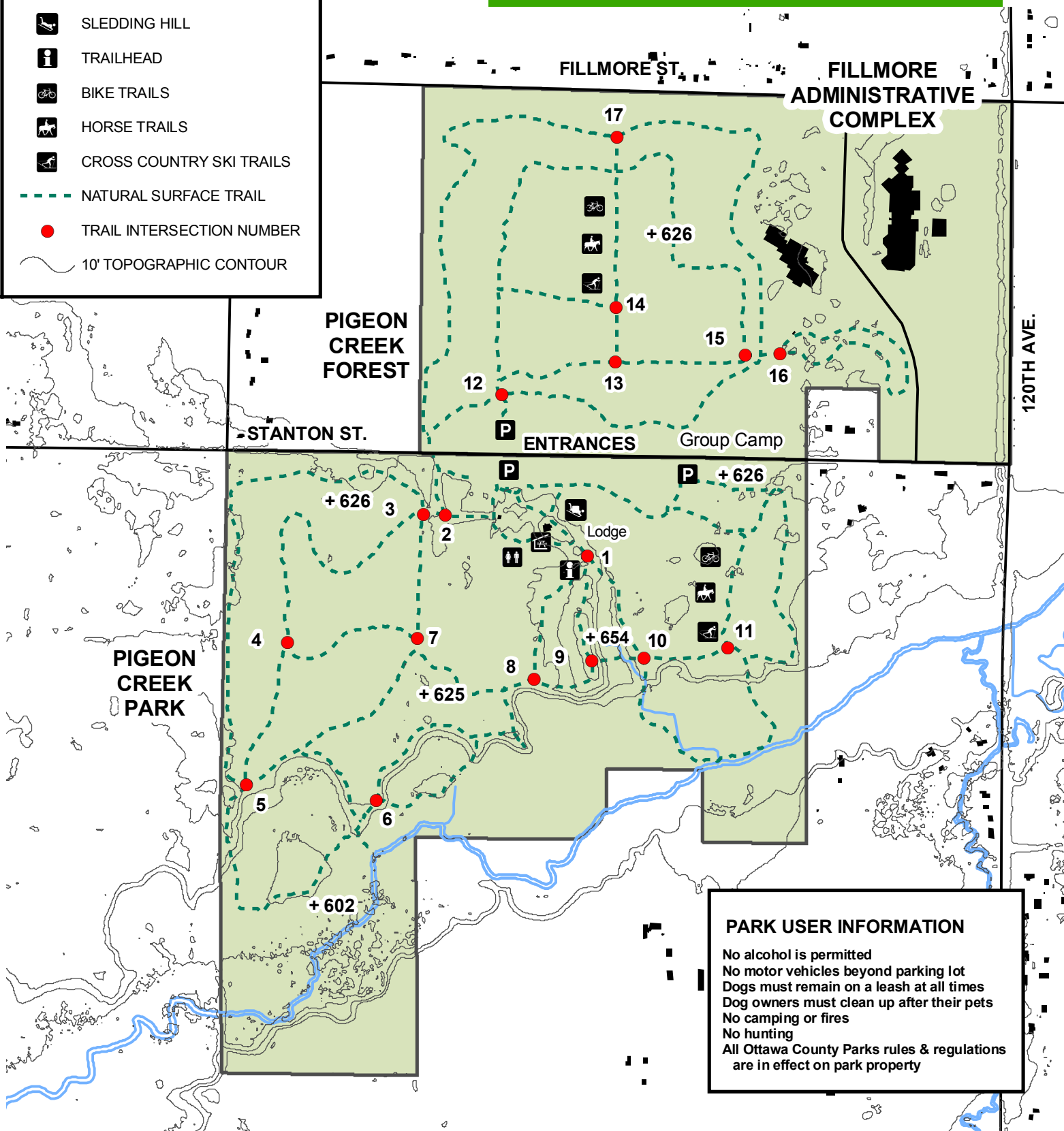


LEGEND

-  PARKING AREA
-  LODGE
-  RESTROOMS
-  SLEDDING HILL
-  TRAILHEAD
-  BIKE TRAILS
-  HORSE TRAILS
-  CROSS COUNTRY SKI TRAILS
-  NATURAL SURFACE TRAIL
-  TRAIL INTERSECTION NUMBER
-  10' TOPOGRAPHIC CONTOUR

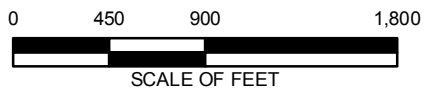
Pigeon Creek Park & Forest

Pigeon River Greenway



PARK USER INFORMATION

- No alcohol is permitted
- No motor vehicles beyond parking lot
- Dogs must remain on a leash at all times
- Dog owners must clean up after their pets
- No camping or fires
- No hunting
- All Ottawa County Parks rules & regulations are in effect on park property



Ottawa County Parks & Recreation Commission

Pigeon Creek Park

12524 Stanton Street
West Olive, MI 49460

Tucked away in the middle of the county, this park offers a quiet retreat for the outdoor enthusiast. Pigeon Creek Park is 282 acres with another 130 adjacent acres of County Open Space land. Over 10 miles of trails wind through old pine plantations, mature deciduous forests and through bottomland forests along the Pigeon River. The trail system includes designated trails for hiking, biking and equestrian use and a 0.9 mile trail loop that is generally within barrier free standards. During the winter, this park is a popular cross country ski destination with groomed trails for both classic and ski skating. A sledding hill is also provided. Three miles of ski trails and the sledding hill have lights for night use. The Pigeon Creek Lodge provides ski rental, a food and beverage concession and serves as a warming house (open limited hours). For more information, call the Pigeon Lodge Hotline at (616) 738-9531.

Hiking, dogs, biking, snowshoeing and horseback riding are NOT allowed on groomed cross country ski trails.

Facilities

- Pigeon Creek Lodge (available for reservations mid-April through October)
- Group Camp Area (reservable for groups from recognized organizations)
- Over 10 miles of trails for hiking and cross country skiing
- Three miles of lighted cross country ski trails for nighttime use
- Designated trails for biking and equestrian use (not during winter)
- Sledding hill (lighted for nighttime use)
- Seasonal concession
- Picnic tables and grills
- Modern restrooms and pit toilets

**Barrier free facilities include the lodge, restrooms, pit toilets, picnic tables and grills. About 0.9 miles of trail is generally within barrier free standards. The Group Camp Area is fully accessible with barrier free camp sites.*

Park Hours

Pigeon Creek Park is open year round at the following times:

March 1 through October 15 - 7 a.m. to 10 p.m.

October 16 through the last day of February - 7 a.m. to 8 p.m.

When cross country skiing and sledding conditions are satisfactory, the ski trails and sledding hill at Pigeon Creek Park remain open every day until 10:00 p.m.

Fees

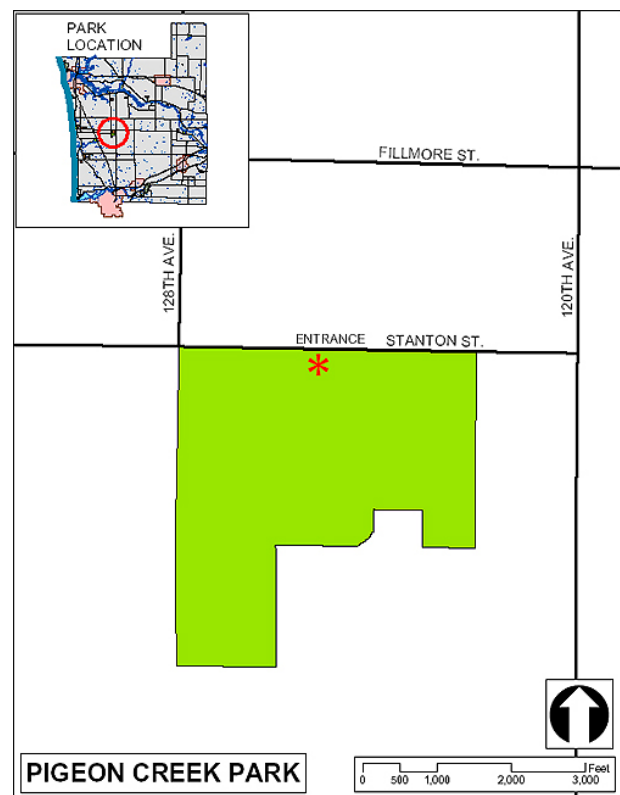
There are no park entry fees or trail use fees

Directions

Located in Olive Township on Stanton Road between 128th and 120th Avenues. From US 31, take Stanton Road and travel 3 miles east to the park entrance.

From 120th Avenue, travel west on Stanton about 1/2 mile.

For emergencies, call 911.



Ottawa County Parks & Recreation Commission
12220 Fillmore Street, West Olive, MI 49460
Phone: (616) 738-4810
Email: ocparks@miottawa.org
Website: <http://www.miottawa.org/parks>