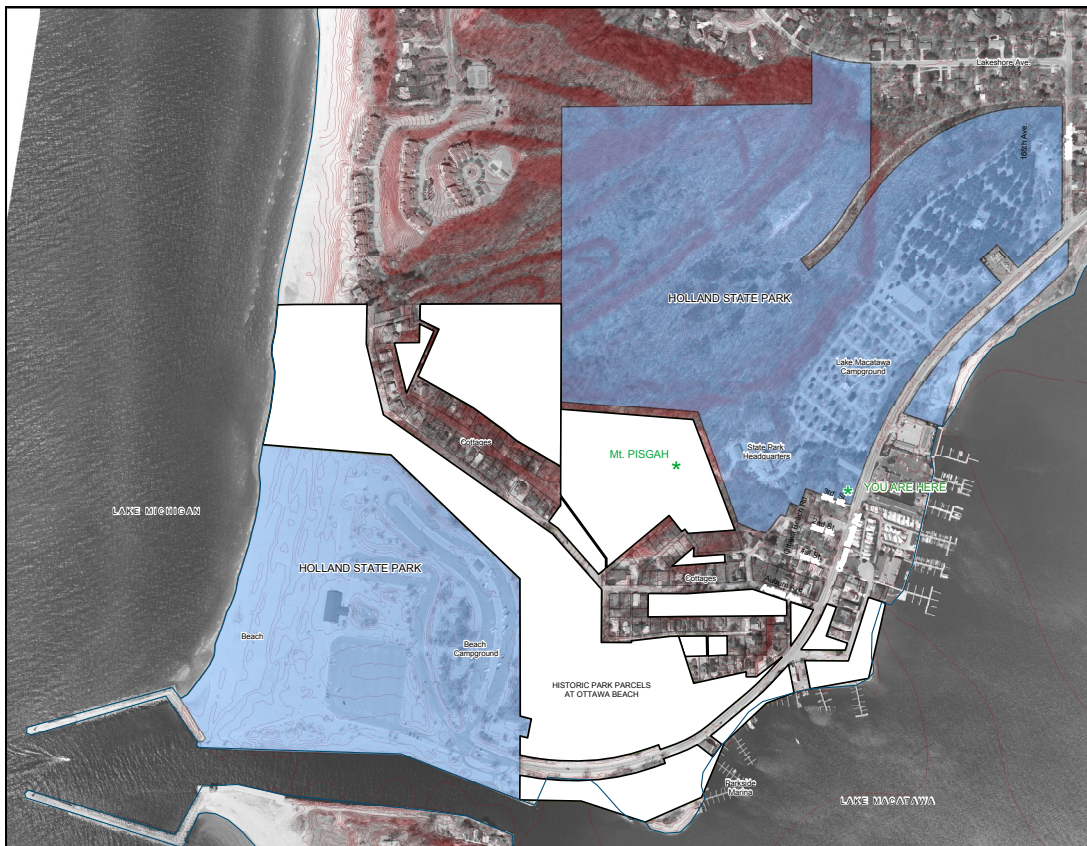


Historic Ottawa Beach Waterfront Walkway

Park Township

Project Description: Public access improvements to the shoreline of Lake Macatawa are the final steps in completing the park master plan for the Historic Ottawa Beach Parks, a project which has been the focus of county and state park planners for over two decades.

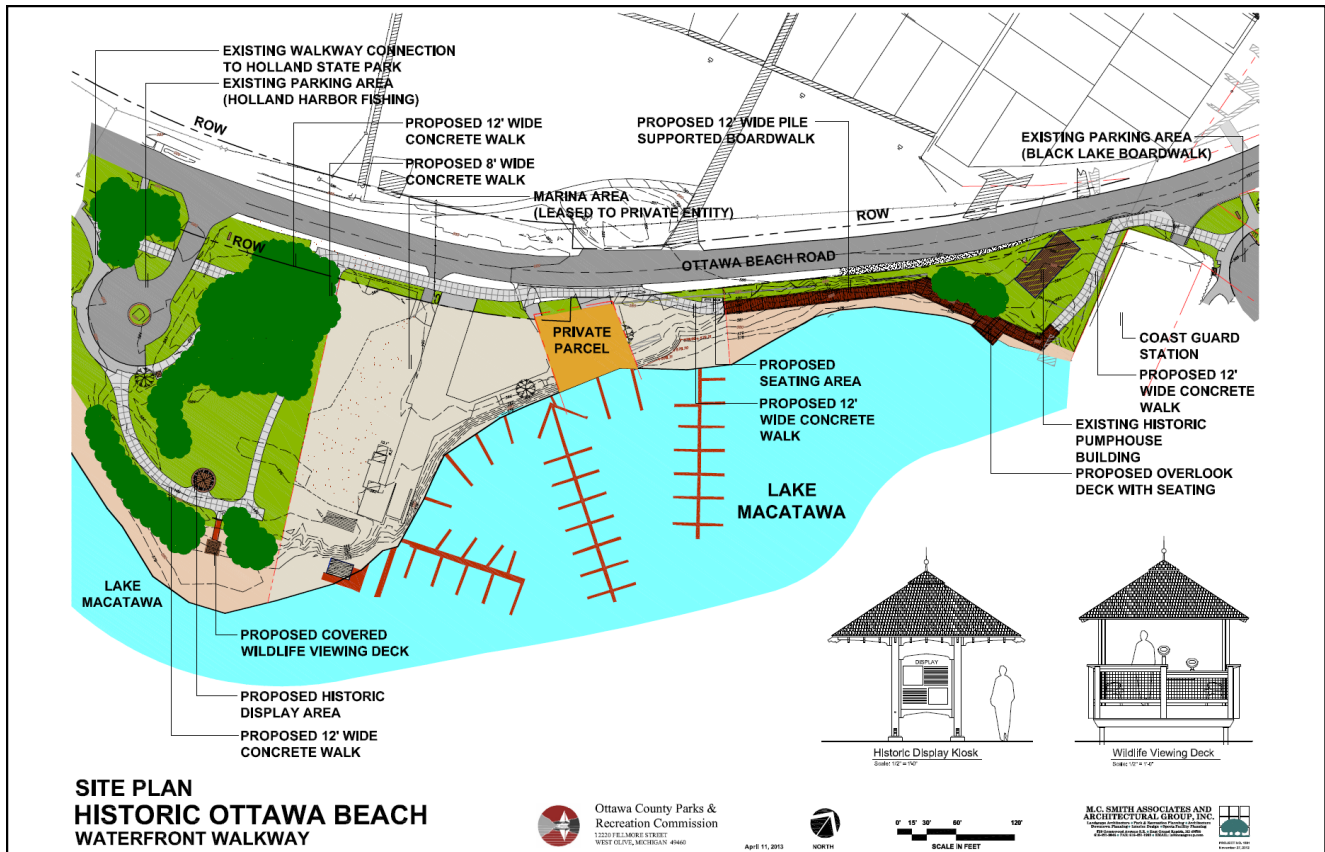
Historic Ottawa Beach Parks, previously known as “Park 12”, consists of 12 park parcels that were deeded for park purposes in 1886 when the West Michigan Park Association (WMPA) was first platted. These twelve parcels of land include 750’ of Lake Michigan beach plus beautiful wooded dunes interspersed between the historic cottages of the WMPA and the two units of the Holland State Park in addition to the 2400’ of Lake Macatawa shoreline.



After decades of disputes about ownership of the park parcels, the legal controversies were resolved in 2005 with the park master plan serving as a part of the agreement. Since that time Ottawa County Parks has been steadily implementing portions of the plan including the Mt. Pisgah Dune stairs, a separated bike path along Ottawa Beach Road, and various smaller projects to improve public and resident access.

Through this project, Ottawa County Parks proposes to construct the final segment of a

waterfront walkway along Lake Macatawa providing opportunities for the public to access the waterfront and enjoy scenic views and opportunities for a range of recreation experiences. The new walkway segment will provide the link between The Black Lake Boardwalk parking area and overlook decks on the east to the Holland Harbor Fishing Access on the west. This completed project will provide a dramatic new recreation attraction in one of Michigan's busiest recreational corridors connecting to Holland State Park's Lake Michigan beach.



Holland Harbor Fishing Access



Black Lake Boardwalk

The project will be complemented and enhanced by two other projects being studied and planned on this section of shoreline. First, the renovation of the historic red brick ‘pumphouse’ building into a historic museum will provide another point of interest along the pathway if private fundraising efforts are successful. Second, improvements to the existing Parkside Marina lease area are also being studied to determine ways to improve public access and the aesthetics.



Proposed pumphouse improvements looking from south



Pumphouse Museum Plan



Ottawa County Parks &
Recreation Commission

Historic Ottawa Beach Waterfront Walkway Meeting Summary

Public Input Meeting held at the
Park Township Offices, Holland, Michigan
April 15, 2013, 6:30 pm

Attendees:

Approximately 25 members of the public attended the meeting. Specific individuals recorded were as follows:

Doug Knapp	Melissa Schuiling
Doug & Julie Maring	Fred Vaas
Norm Dekker	Linda Brouwer
Dave & Cindy Lind	Elaine Blouw
Julian Cappello	Steve & Bonnie Engers
Joel Welch	Beverly Murray
Herb & Sally Pollock	Penny Doan
Bruce & Cheryl Weaver	Jerry Hunsburger

Park Staff and Others:

Curt TerHaar	Ottawa County Coord. of Park Planning & Dev.
James DeWilde	M. C. Smith & Associates, Inc.

Meeting Summary:

Curt TerHaar opened the meeting with introductions and proceeded to provide a brief overview of the history of development of the Park 12 Master Plan and the various projects that have been implemented from 2005 to the present. It was noted that this project closely follows improvements as shown on the original master plan. He also reviewed other aspects of the project including the schedule and grant funding.

James DeWilde provided a detailed explanation of the various aspects of the plan including connections to existing development, project elements, and materials. He also described the

current status of the project in relation to required approvals and permitting. It was noted the construction would probably not start until next winter or spring.

The meeting was opened to questions and comments. Discussion topics are summarized below:

Comments/Discussion:

- There was a request to remove the concrete rubble from the cove area west of the project to make a nicer sand beach area. There was some discussion about whether this material was just old fill material or part of the remains from the hotel. Response: This work is not part of this project, but park staff will assess the situation.
- Several attendees questioned the need for 12' of walk width on the new walkways, noting that path across the street is 8' wide and the new Heinz walkway in Holland is 10' wide. Concerns were raised about people being tempted to drive on such a wide walk to turn around similar to what they have done on the opposite side of the street on the separated bike path. Response: Parks believes that the path will be very popular and used by multiple types of users including, walkers, bikers, people with strollers, and others. The recently completed Holland Harbor Fishing Access Project was built with 12' walks and appears to work well. The roadside parking would likely make using the path for turning around difficult.

After the meeting an attendee shared that the current 8' path did not seem wide enough at times for the amount of use.

- A suggestion was made to keep bikes off the new trail and allow them only on the north side of the road.
- Several attendees were also concerned about unauthorized public access to the marina lease area since there is already a problem with people trying to use the marina restrooms. They asked what types of barriers are being proposed. Response: There are existing barriers/fences along Ottawa Beach Road that will remain in place. Fence is not included along the west edge of the marina as part of this project, although this idea has been discussed previously with the marina owner. Signage would also be used to direct visitors around the marina.

Other aspects of the discussion included the desire of County Parks in the long term to provide public access along the marina waterfront. This is done in many waterfront communities and can work well.

- A large portion of the discussion was devoted to the issue of traffic and parking during the busiest days of the summer. Various concerns and suggestions were made about whether this project would add to traffic, where additional parking could be provided, if there should be parking allowed along the road, and how traffic could be diverted earlier. The topic was concluded by noting that this project can not solve the long-standing congestion problems in this area. There is a meeting coordinated by the township to discuss this issue coming up later this spring.

TerHaar noted that this project will primarily accommodate people who are already in this area during the busy times, and will provide a great amenity for residents and others during the nine month off season when parking is adequate.

In regard to street crossings, it was noted that there are currently two designated crosswalks – one at the Black Lake Boardwalk parking area and one at the Fishing Access area. A third one was removed from the project at the request of the marina owner.

- Question: Will golf carts be allowed on the new trail? Response from audience: Park Township does not allow any powered vehicles on paths and sidewalks
- Comment: There is a need for modern public restroom. Response: Parks realizes this is desirable. Port-a-potties will be provided on either end of the project. A modern restroom is also included in the plans for the pumphouse museum.
- Comment: Benches near road are not desirable because of the traffic and noise.
- Comment: Would prefer a private operator of the marina rather than a government employee.
- Comment: Does not want to see big change – keep existing character.

The meeting ended at approximately 8:15 pm.

End of Meeting Notes

Project Updates:

11.24.14 The original grant funded walkway project is now complete including the work in front of the Coast Guard Station. Work added to the project including concrete walks and landscape work around the Pumphouse building has been delayed pending determination of work on the building. It is anticipated that this work will now occur in the spring.

10.30.14 Work on the historic kiosk including painting and the audio equipment has been completed. Curb and walkway work in front of the Coast Guard Station is in progress.



Completed hotel history kiosk



New walkway in front of Coast Guard station

09.27.14 Boardwalk and concrete construction is complete. Restoration work is in progress. Carpentry for the historic kiosk is now completed. The roof, painting and installation of the interpretive panels and audio device will be completed soon. Work around the Coast Guard station will begin in October. Site work around the pumphouse will begin after work on the pumphouse foundation is completed.



Historic kiosk with new tree plantings



Pumphouse site prepared for final work



New overlook deck



Binoculars and bench at overlook

08.27.14 Boardwalk and concrete construction are nearing completion. Restoration work is in progress. The historic kiosk was delayed due to complications with the trusses and other structural issues, but is now in progress. Work around the pumphouse and Coast Guard station will begin in October in conjunction with the Pumphouse restoration.



Completed boardwalk



New boardwalk looking east at pumphouse



Completed boardwalk looking east from marina



New walkway in front of private property



New wildlife viewing deck



Historic Display location with Parkside Marina in background

07.31.14 Boardwalk and concrete construction are nearing completion. Restoration work is in progress. The historic kiosk was delayed due to complications with the trusses and other structural issues, but is now in progress. Work around the pumphouse and Coast Guard station will begin in October in conjunction with the Pumphouse restoration.



New concrete walk in front of private Parkside Marina property



New boardwalk looking west from pumphouse



New wildlife viewing deck framing in progress



New concrete walk connection to west parking

06.25.14 Construction including steel and wood framing for the boardwalk is in progress. Concrete abutments for the boardwalk have been completed and concrete flatwork is in progress.



Concrete abutment and steel framing for boardwalk at east end of project



New boardwalk looking west from pumphouse



New boardwalk looking east from marina area



New concrete walk connection to west parking

05.28.14 Construction is in progress. Site preparation and clearing is completed. Steel piling for the boardwalk and lake overlook is complete with steel framing in progress. Design work on the historical panels is almost complete as well as the draft narrative for the audio portion of the interpretive kiosk.



Site clearing for new walks



Cleared location of Lake Macatawa overlook



Installing metal pipe piling at new boardwalk location

04.25.14 Construction has begun with clearing of brush completed. Driving of piling for the boardwalks will start soon. Coordination with the Road Commission continues with efforts to take into account the future resurfacing of Ottawa Beach Road.

03.27.14 The contract has been approved and work will begin in April with installation of the boardwalk pilings. Also, the Coast Guard has approved the relocation of a corner of their fence which will allow for us to maintain the 12' wide walkway plus some buffer space at that location. At their request, this work will not occur until October to limit potential interference at their entrance.

02.26.14 Bids have been received for project construction, and a recommendation for hiring a contractor will be presented at the March Parks Commission meeting. Some final coordination with the Coast Guard continues with the hope of gaining space for the walkway going around their facility.

01.29.14 We have received our permit from the Corps of Engineers, plans have been completed, and the project is out for bids. A recommendation for hiring a contractor will be presented at the March Parks Commission meeting. Some final coordination with the Coast Guard is in progress with the hope of gaining space for the walkway going around their facility. In conjunction with the main construction contract, detailed design work continues on the interpretive display panels for the Historic Ottawa Beach Hotel. Research for this effort has also confirmed that concrete foundations currently exposed along the shoreline at the Holland Harbor Fishing project are in the location of the hotel.



Concrete foundation at Holland Harbor



Draft Interpretive panel

12.23.14 We are still awaiting a permit from the Corps of Engineers after providing additional requested information. Coordination with the Road Commission has been completed. We are still hopeful to bid this project this winter for spring and early summer construction.

11.26.14 Coordination with the Ottawa County Road Commission and Corps of Engineers continues to acquire final approvals. Work on historic displays relating to the Ottawa Beach Hotel will begin in early December. Pending final approvals, bidding will occur in early 2014 Construction is planned for spring and early summer.

10.30.14 Bidding documents for this project have been approved by the MDNR grant coordinator, and details for work in the road ROW are being finalized with the Road Commission. Additional information has also been submitted to the Corps of Engineers based on results of their public comment period. Construction is planned for spring of 2014 pending final approvals. Also, RFP's are due on October 31 for a consultant to help us with the historic displays relating to the Ottawa Beach Hotel that are a part of the project.

09.25.13 Bidding documents for this project have been approved by the MDNR grant coordinator, and details for work in the road ROW are being finalized with the Road Commission. Additional information has also been submitted to the Corps of Engineers based on results of their public comment period. Construction is planned for spring of 2014 pending final approvals. Also, RFP's are due on October 31 for a consultant to help us with the historic displays relating to the Ottawa Beach Hotel that are a part of the project.

08.28.13 A permit from the Michigan Department of Environmental Quality has been obtained with the provision that the roof structure on the wildlife viewing deck be removed since it would be over an area within the ordinary high water mark. Additional information has been submitted to the Corps of Engineers for their review. Construction is now planned for spring of 2014 pending Corps of Engineers permit.

06.28.13 Since approval of the site plan by the Park Township Planning Commission, construction plans are being finalized for submittal to the granting agency (MNRTF) for review. All permits have been submitted, but bidding will not occur until these permits have been approved. Major construction will most likely begin in the spring of 2014.

05.29.13 The plan was approved by the Park Township Planning Commission at their May 21 meeting. Permits have been submitted and plans are being finalized for submittal to the granting agency (MNRTF) for review. Bidding will not occur until permits and approvals are in place. Major construction will most likely begin in the spring of 2014.

04.25.13 A public meeting to discuss the project was held on Monday, April 15. Notes from this meeting are attached. Plans will be submitted to the state and township for review and permits in the next couple of weeks. Fall 2013 would be the earliest that any construction could start with likely completion by summer 2014.

03.28.13 A public meeting to discuss the project has been scheduled for Monday, April 15. Plans will be submitted to the state and township for review and permits following the public input meeting

01.18.13 Coordination with the Road Commission and Parkside Marina continues. Our design consultant is refining the plans based this input and the final topographic survey. A public meeting to discuss the project has been delayed until resolution of the issues with the marina owner have been finalized as well as submittal of the plans to the township and state for review and approval.

11.28.12 Coordination with the Road Commission and Parkside Marina is in progress. Our design consultant is refining the plans based this input and the final topographic survey.

10.31.12 M. C. Smith and Associates has been chosen as our design consultant. Topographic survey work has been completed, and detailed site analysis and design development is in progress.

08.22.12 Grant funds have been appropriated by the state. RFPs from potential consultants will be presented at the next Park Commission Meeting

07.25.12 We are awaiting appropriation of grant funds by the Michigan legislature. Topographic survey work has been started, and an RFP has been sent to potential consultants.

04.29.12 Grant funding for the waterfront walkway has been recommended by the Michigan Natural Resources Trust Fund in the amount of \$300,000. Ottawa County Parks will match this with another \$300,000. The project will not move forward until this money is appropriated by the Michigan legislature and signed by the governor.