

Rosy Mound Natural Area

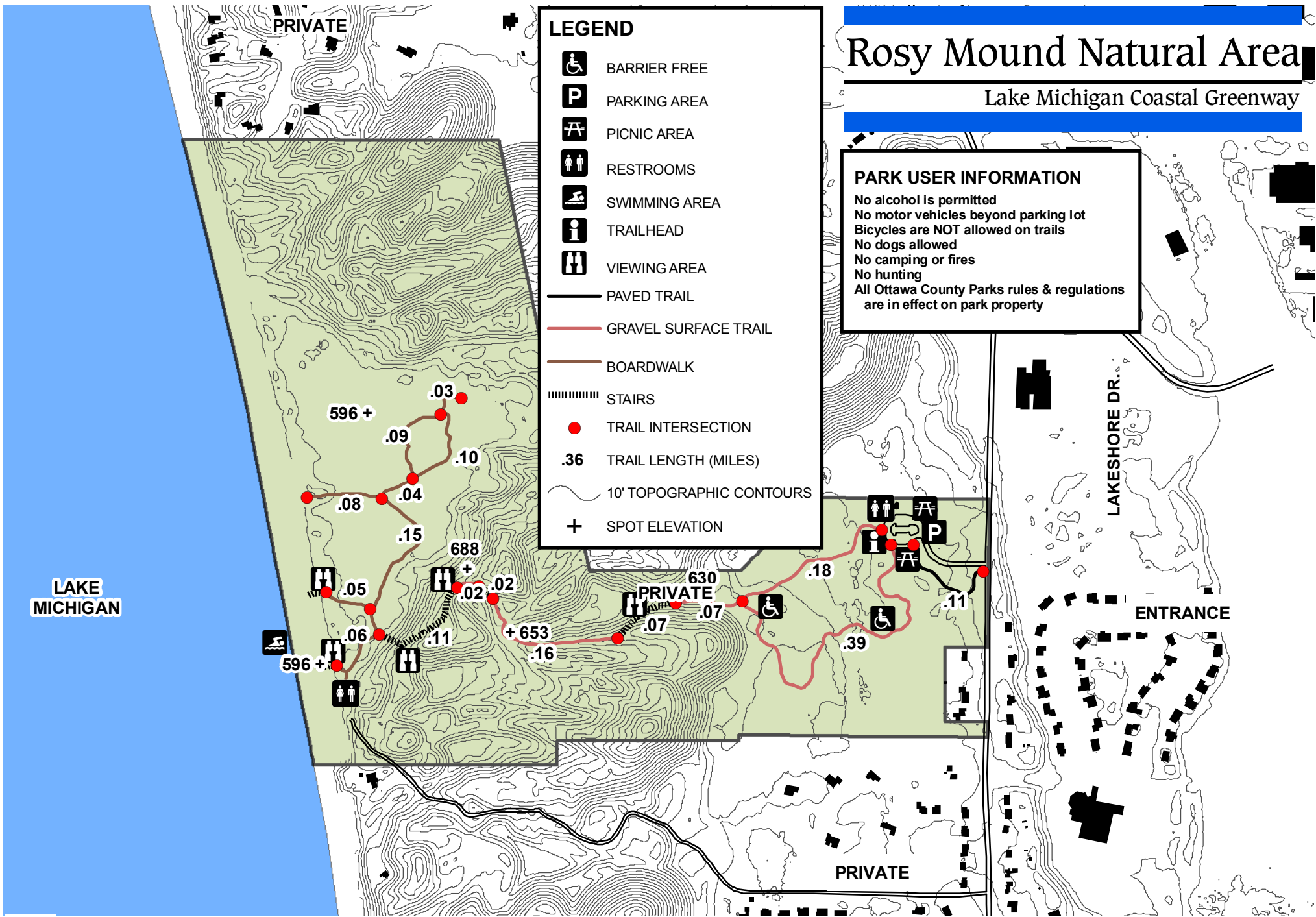
Lake Michigan Coastal Greenway

PARK USER INFORMATION

No alcohol is permitted
No motor vehicles beyond parking lot
Bicycles are NOT allowed on trails
No dogs allowed
No camping or fires
No hunting
All Ottawa County Parks rules & regulations are in effect on park property

LEGEND

- BARRIER FREE
- PARKING AREA
- PICNIC AREA
- RESTROOMS
- SWIMMING AREA
- TRAILHEAD
- VIEWING AREA
- PAVED TRAIL
- GRAVEL SURFACE TRAIL
- BOARDWALK
- STAIRS
- TRAIL INTERSECTION
- TRAIL LENGTH (MILES)
- 10' TOPOGRAPHIC CONTOURS
- SPOT ELEVATION



LAKE MICHIGAN

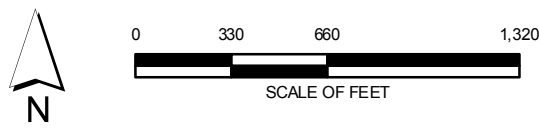
LAKESHORE DR.

ENTRANCE

PRIVATE

PRIVATE

PRIVATE



Rosy Mound Natural Area

13925 Lakeshore Drive
Grand Haven, MI 49417

Ottawa County's Newest Park

Rosy Mound is a classic Great Lakes dune system including high wooded dunes, foredunes, beach and a dune blowout. A 0.7 mile (one way) hiking trail from the parking area to the Lake Michigan shoreline includes 1,000 feet of stairs up and down the dunes and scenic views of woods, the dune blowout and Lake Michigan. A unique shade canopy, dune boardwalk trail and pit toilets are located near the beach. Improvements to this 164 acre park were completed in April 2004.

Note: Ottawa County provides NO LIFEGUARDS at parks with swimming facilities.

Dogs are not allowed at Rosy Mound any time of year.

Facilities

- Hiking trail to Lake Michigan (somewhat strenuous due to stairs up and down dunes)
- Scenic views of Lake Michigan and dunes
- Picnic tables and grills
- Unique shade canopy near beach
- Interpretive signs along the trail
- Restrooms near parking area and near beach

** Barrier free facilities include parking lot restrooms, picnic tables and grills. Some trails are wheelchair accessible and all stairs are designed to be ADA accessible.*

Park Hours

Rosy Mound is open year 'round.

April 1 through October 31 - 7 a.m. to 10 p.m. November 1 through March 31 - 7 a.m. to 8 p.m.

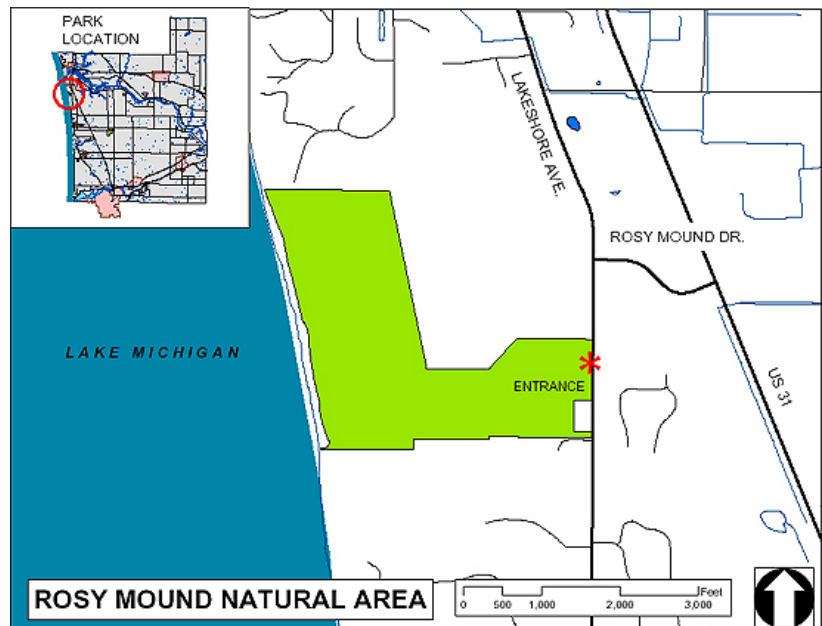
Fees

Motor vehicle parking fees are in effect from Memorial Day weekend through Labor Day weekend. Rosy Mound Park has a self-service fee station (cash) only and requires a flat fee of \$6.00 for Daily Permits. Annual permits are valid at Rosy Mound.

Directions

Located south of Grand Haven in Grand Haven Township on Lakeshore Avenue. From US 31, turn west on Rosy Mound Drive, then south on Lakeshore Avenue to the park entrance on the west side of the road.

For emergencies, call 911.



Ottawa County Parks & Recreation Commission

12220 Fillmore Street, West Olive, MI 49460

Phone: (616) 738-4810

Email: parks&rec@miottawa.org

Website: <http://www.miottawa.org/parks>