



## OTTAWA COUNTY WATER RESOURCES COMMISSIONER

### SUMMERLIN NORTH DRAIN

#### **NOTICE OF LETTING**

**DATE:** Wednesday, June 23, 2021  
**TIME:** 11:00 a.m.  
**LOCATION:** OCWRC Office – 12220 Fillmore Street, Room 141, West Olive, MI 49460  
**QUESTIONS:** (616) 994-4530

The Ottawa County Water Resources Commissioner will meet on the above date, time and location to receive construction bids for the Summerlin North Drain. Bids will then be opened and publicly announced.

The Summerlin North Drain project will be let in one (1) section as follows, each section having the length, average depth and width as set forth:

*322 feet of 1 foot flat bottom ditch cleanout*  
*575 feet of 1 foot flat bottom ditch reconstruct*  
*757 feet of detention pond reconstruct*  
*128 feet of 15"-18" storm sewer*

This Notice of Letting, the plans, specifications and bid proposal shall be considered a part of the Contract. The Contract will be let in accordance with the Contract Documents now on file at the below locations and available to interested parties. Bids will be made and received in accordance with these documents. Bidding Documents, including plans and specifications, may be examined at the following locations:

***Online at [www.preinnewhof.com/planroom](http://www.preinnewhof.com/planroom) or at the offices of: Ottawa County Water Resources Commissioner, 12220 Fillmore Street, Room 141, West Olive, MI 49460; Prein&Newhof, 3355 Evergreen Drive NE, Grand Rapids, MI 49425***

Copies of Bidding Documents may only be obtained upon payment of a **\$85.00 non-refundable** deposit. An additional **non-refundable** charge of **\$15.00** will be required for sending out Bidding Documents.

***A bid bond, certified check, or cashier's check payable to Summerlin North Drain Drainage District c/o Ottawa County Water Resources Commissioner in the amount of five percent (5%) of the total price shall accompany each bid. This surety shall bind the bidder for a period of sixty (60) days after the receipt of bids.***

The Contract will be awarded to the lowest responsive and responsible bidder giving adequate security for the performance of the work and meeting all conditions represented in the Instructions to Bidders. The Contract completion date and the terms of payment will be announced at the time and place of letting. If no satisfactory bids are received, we reserve the right to reject any and all bids and to adjourn to a time and location as we shall announce.

The following is a description of the several tracts or parcels of lands constituting the Summerlin North Drain Drainage District: *see First Order of Determination attached.*

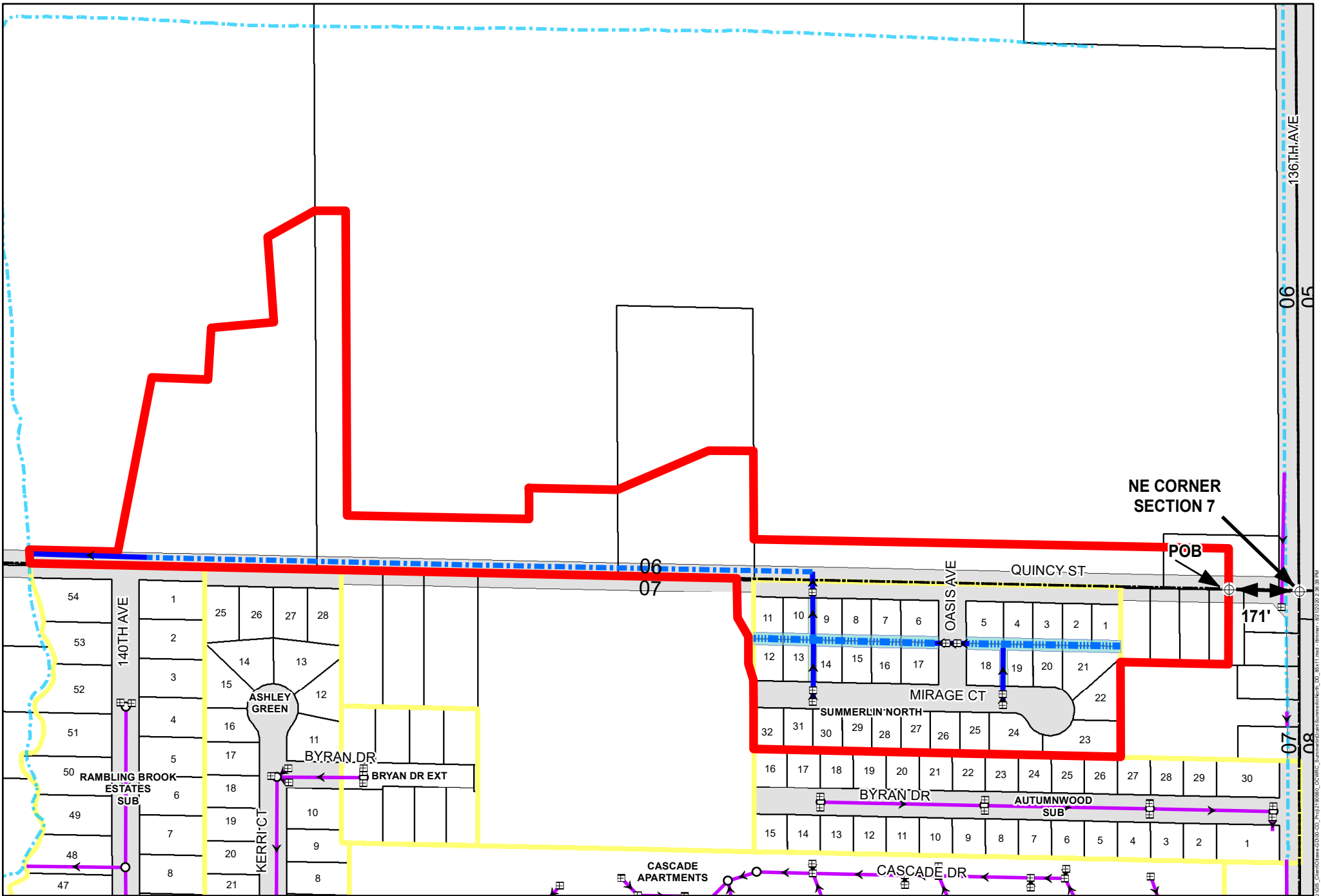
**EXHIBIT B: SUMMERLIN NORTH DRAIN  
FIRST ORDER DRAINAGE DISTRICT DESCRIPTION**

(Sections 6 & 7 of Holland Charter Township, Ottawa County, Michigan)

*See attached GIS exhibit "Exhibit B: Summerlin North Drain Drainage District" dated August, 2020 (total 1 sheet).*

Commencing at the northeast corner of Section 7 of Holland Charter Township; thence N88°46'47"W along the north line of Section 7 and the centerline of Quincy Street an approximate distance of 171 feet to the point of beginning; thence S00°09'19"W an approximate distance of 183 feet; thence N88°46'42"W an approximate distance of 262 feet; thence S00°06'18"E an approximate distance of 230 feet along the east lot lines of lots 22 and 23 of the Summerlin North plat; thence N88°46'45"W an approximate distance of 890 feet along the south lot lines of lots 23-32 of the Summerlin North Plat to the southwest corner of said lot 32; thence N00°04'40"W along the west line of lot 32 of Summerlin North Plat and the west right-of-way line of Mirage Court an approximate distance of 167 feet to the northwest right-of-way corner of Mirage Court; thence N17°34'05"W an approximate distance of 41 feet; thence N00°00'00"E an approximate distance of 66 feet; thence N29°36'16"W an approximate distance of 53 feet; thence N01°09'53"W an approximate distance of 95 feet to the centerline of Quincy Street; thence N88°46'44"W along the centerline of Quincy Street an approximate distance of 1,714 feet; thence N02°50'27"W an approximate distance of 33 feet to the north right-of-way line of Quincy Street; thence S88°46'31"E along the north right-of-way line of Quincy Street an approximate distance of 215 feet; thence N10°59'03"E an approximate distance of 430 feet; thence S87°42'44"E an approximate distance of 137 feet; thence N03°33'45"E an approximate distance of 125 feet; thence N84°40'39"E an approximate distance of 153 feet; thence N04°16'52"W an approximate distance of 207 feet; thence N60°55'51"E an approximate distance of 131 feet; thence N89°59'03"E an approximate distance of 75 feet; thence S00°16'30"E an approximate distance of 739 feet; thence S88°53'32"E an approximate distance of 441 feet; thence N00°16'30"W an approximate distance of 75 feet; thence S88°56'43"E an approximate distance of 214 feet; thence N66°47'36"E an approximate distance of 241 feet; thence S89°32'55"E an approximate distance of 108 feet; thence S00°18'09"E an approximate distance of 214 feet; thence S88°53'32"E an approximate distance of 1151 feet; thence S00°09'43"W an approximate distance of 98 feet to the point of beginning. Total area of the Summerlin North Drain Drainage District is approximately 24.37 acres.

*This description was generated using the as-mapped drainage district from ArcGIS. Actual locations of the drainage district have not been field verified with GPS.*



SCALE: 1" = 300'

- LEGEND**
- ▬ SUMMERLIN NORTH DRAIN
  - ▬▬▬ SUMMERLIN NORTH DRAIN - DETENTION FLOW
  - ▬▬▬ SUMMERLIN NORTH DRAIN - OPEN DRAIN
  - ▬▬▬ SUMMERLIN NORTH DRAIN - STORM SEWER
  - ▬▬▬ SUMMERLIN NORTH DETENTION POND
  - ▬▬▬ STORM SEWER
  - ▬▬▬ WATERCOURSE
  - PLAT BOUNDARIES
  - CATCH BASIN
  - MANHOLE
  - EASEMENT
  - RIGHT OF WAY
  - SECTION BOUNDARY

**OTTAWA COUNTY WATER RESOURCES COMMISSIONER**  
 HOLLAND CHARTER TOWNSHIP  
**EXHIBIT B: SUMMERLIN NORTH DRAIN**  
**DRAINAGE DISTRICT**  
*Prein & Newhof*  
 AUGUST 2020  
 2190680

17088\_C:\info\Draws\210680-00\_Dwg\210680-00\_WRC\_SummerlinNorth.dwg - 08/11/2020 10:28:38 AM