

# Ottawa County Influenza Surveillance Report

*MMWR\* Week 22: May 29, 2022 – June 04, 2022*

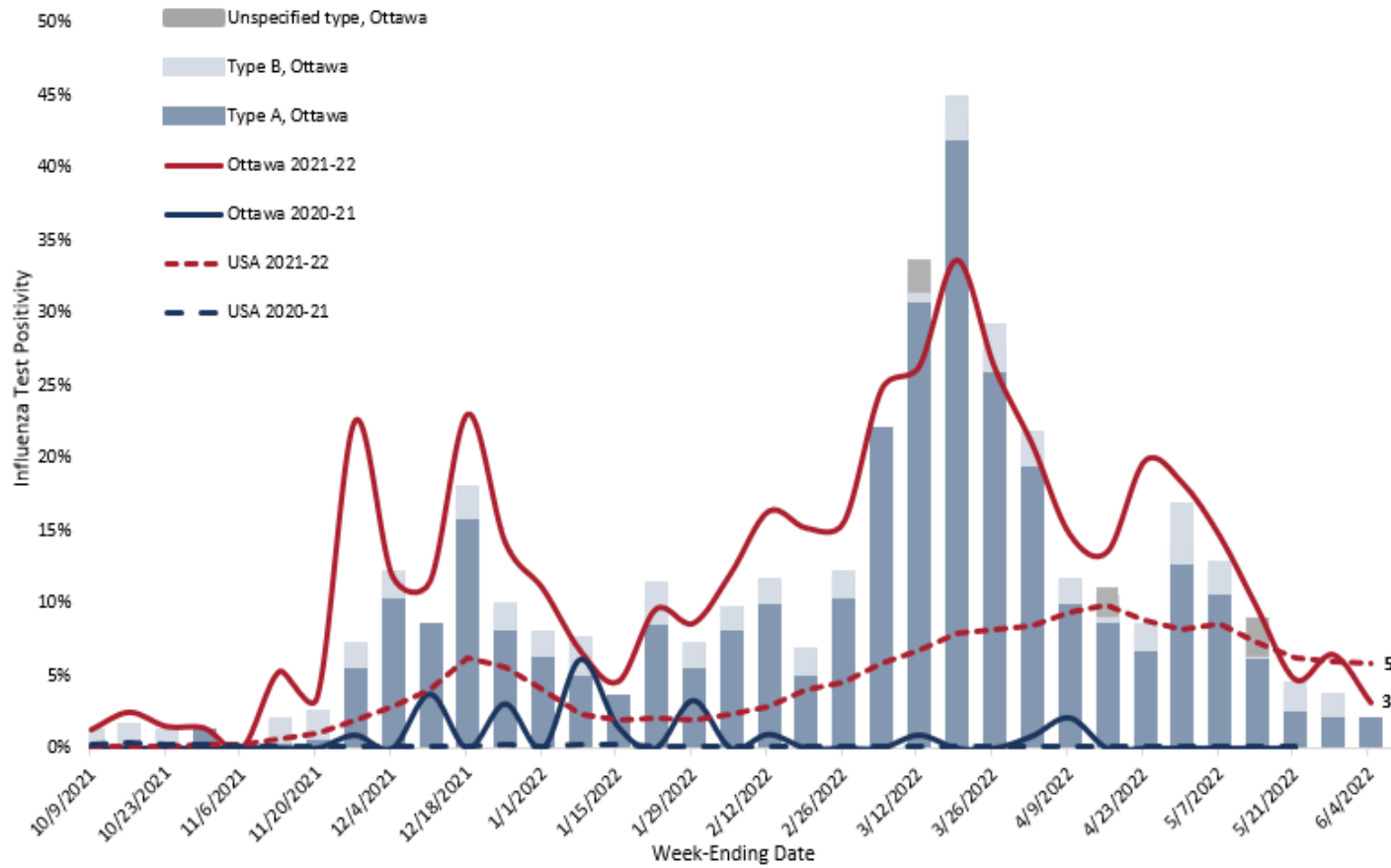


Scan code or click [HERE](#) to tell us what you think of this report

*\*Morbidity and Mortality Weekly Report*

# Influenza Test Positivity in the USA and Ottawa County

Figure 1: Positivity Rate of Influenza Tests by Week, Ottawa County and United States



Influenza test positivity is the percent of influenza tests conducted by reporting providers and laboratories that result positive.

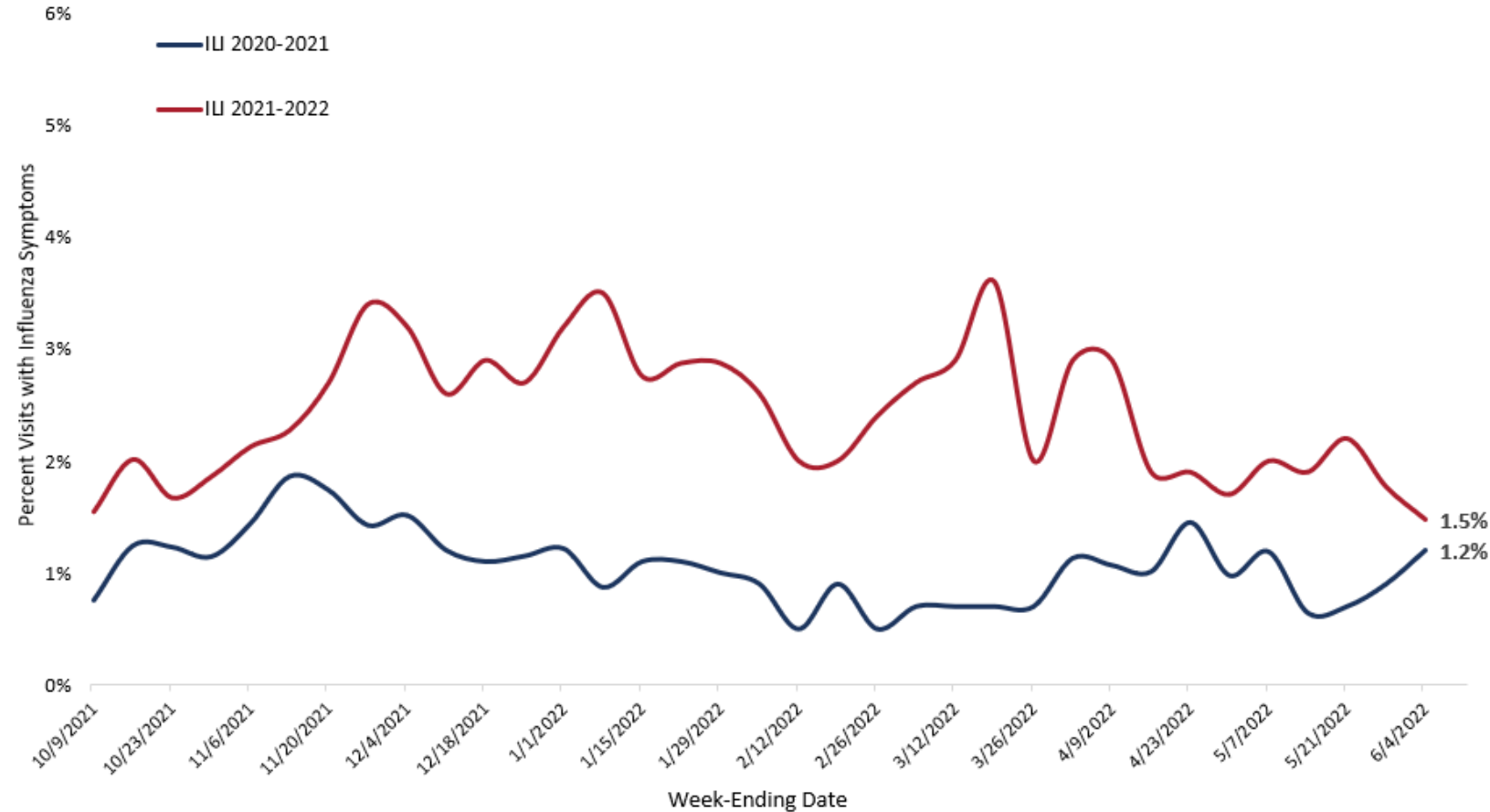
- On week 22, influenza test positivity in Ottawa County dropped to 3.1%, from 6.5% reported the previous week.
- Although current influenza positivity remains higher than that reported for most of last season, it is much improved from that observed throughout the current season. Influenza positivity level during in Ottawa County during week 22 was low.
- Nationwide influenza test positivity was 5.9% on week 22, similar to 5.0% reported the previous week. This proportion is also much improved from that reported through most of the last 3 months but remains higher than that reported throughout last season.

MMWR Week	Week-Ending Date	Type A	Type B	Unspecified	Total Influenza	Total Tested	Positivity
15	4/16/2022	49	2	3	54	399	13.5%
16	4/23/2022	39	2	0	41	207	19.8%
17	4/30/2022	70	14	0	84	460	18.3%
18	5/7/2022	59	4	0	63	433	14.5%
19	5/14/2022	36	1	6	43	450	9.6%
20	5/21/2022	17	3	0	20	424	4.7%
21	5/28/2022	15	1	0	16	248	6.5%
22	6/4/2022	7	0	0	7	223	3.1%

Note: Several factors, including changes in healthcare seeking behavior, increased awareness, hygiene practices and other non-pharmaceutical interventions, and initial public health orders in response to the COVID-19 pandemic, may have contributed to the lower influenza activity reported last season compared to previous influenza seasons.

# Syndromic Surveillance for Influenza in Ottawa County

Figure 2: Percentage of Emergency Department (ED) Visits in Ottawa County with Influenza-like Illnesses (ILI).



- These data reflect the proportion of patients seen in Ottawa County hospital EDs with influenza-like illnesses (ILI).
- Influenza-like illnesses, or ILI, include sudden onsets of fever, cough and/or sore throat.
- During week 22, Ottawa County ED visits with ILI decreased to 1.5%, from 1.8% the previous week. These proportions are still much improved from the apparent peak observed on week 11 (March) but remains higher than that seen at the same time last season

MMWR Week	Week-Ending Date	ILI Visits	Total ED Visits	Percent of ED visits
15	4/16/2022	36	1862	1.9%
16	4/23/2022	34	1827	1.9%
17	4/30/2022	33	1931	1.7%
18	5/7/2022	41	2032	2.0%
19	5/14/2022	41	2153	1.9%
20	5/21/2022	46	2123	2.2%
21	5/28/2022	37	2092	1.8%
22	6/4/2022	31	2099	1.5%

Note: Several factors, including changes in healthcare seeking behavior, increased awareness, hygiene practices and other non-pharmaceutical interventions, and initial public health orders in response to the COVID-19 pandemic, may have contributed to the lower influenza activity reported last season compared to previous influenza seasons.

# Influenza-Like Illness (ILI) Surveillance from Reporting Schools, Childcare and Healthcare Settings

Ottawa County Department of Public Health (OCDPH) reports on ILI activity in schools, licensed childcare, healthcare providers and long-term care facilities (LTCF) by week.

- During week 22, the proportion of ILI reported in school/childcare settings decreased to 0.3%, from 0.9% reported the previous week. ILI activity was similar to that reported at this same time last season.

Figure 3: Percent ILI in Schools and Childcare ILI by Week

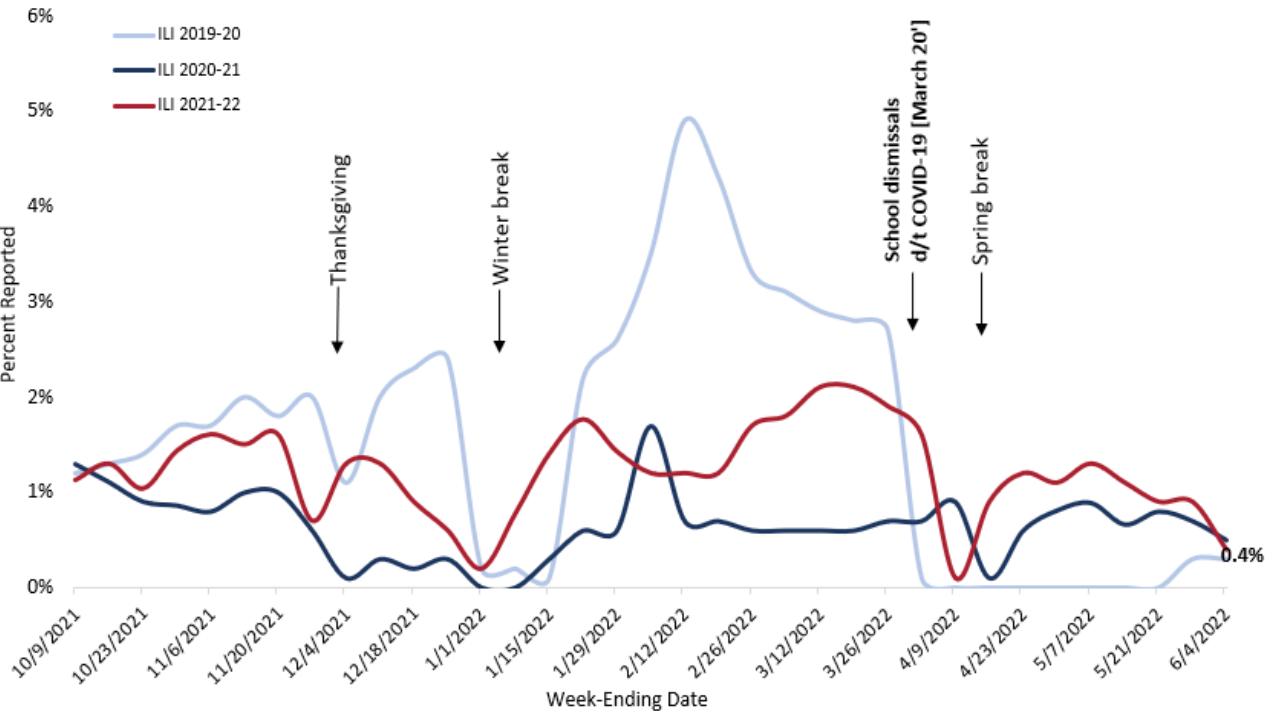
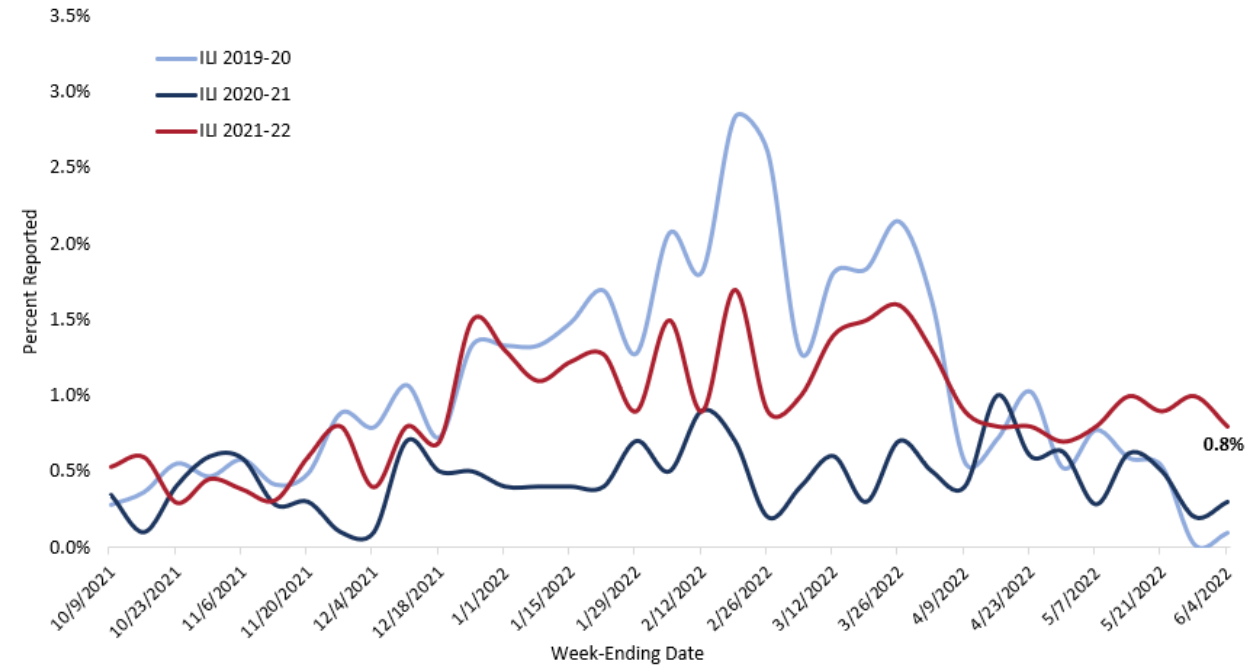


Figure 4: Percent Healthcare ILI Visits by Week



- Reported ILI in healthcare offices was 0.8%, slightly down from 1.0% reported the previous week, and remaining higher than that reported at the same time over the previous 2 seasons.
- There were no new influenza outbreaks in LTCF settings during week 22. A total of five (5) influenza outbreaks have been reported in LTCFs in Ottawa County this season.

*Note: Several factors, including changes in healthcare seeking behavior, increased awareness, hygiene practices and other non-pharmaceutical interventions, initial public health orders in response to the COVID-19 pandemic, and absences for other reasons including COVID-19 quarantine and isolation, may contribute to the lower influenza activity reported last season, compared to previous influenza seasons.*

## Influenza Sentinel Surveillance

- So far this season, there have been reports of **influenza A (H3)** circulation from an influenza sentinel surveillance site in Ottawa County.

## Influenza-Associated Pediatric Mortality

- Nationally, **three (3) new influenza-associated pediatric death** was reported to the CDC on week 22, a total of **twenty-eight (28)** have been reported so far this season. One (1) influenza-associated pediatric death has been reported in Michigan thus far in the 2021-22 flu season. There have been no reports of influenza-associated pediatric deaths in Ottawa County.

## Influenza Vaccine Coverage

- The best way to prevent influenza is by getting the influenza vaccine each year. Ottawa County has seen improvements in influenza vaccine coverage over the last 3 influenza seasons. The table below reflects total vaccination coverage rate in Ottawa County and statewide (MI) over the last 3 influenza seasons and through May 21st this season.

	2018-19 Season	2019-20 Season	2020-21 Season	2021-22 Season (YTD)
Ottawa County	39%	40.2%	42.9%	40.0%
Michigan	30.3%	31.6%	34.3%	31.7%
Healthy People 2020 Target	70%	70%	70%	70%

YTD = Year to date

## Preventing the flu/influenza

- Get the flu vaccine
- Stay home when sick and limit contact with other people
- Wash hands frequently with soap and water
- Cover coughs and sneezes

[Click here to learn more about preventive steps.](#)

## Useful Links and Resources

- MDHHS reports first influenza-associated pediatric death in Michigan this season: <https://www.michigan.gov/mdhhs/0,5885,7-339--579340--,00.html>
- Interim estimates of the 2021-22 Seasonal Influenza Vaccine Effectiveness: <https://www.cdc.gov/mmwr/volumes/71/wr/mm7110a1.htm>
- Spotlight on concerning flu vaccination coverage estimates among people at risk for flu complications: <https://www.cdc.gov/flu/spotlights/2021-2022/study-shows-drop-in-flu-coverage.htm>
- National influenza surveillance data are available at: <https://www.cdc.gov/flu/weekly/index.htm>
- Statewide influenza surveillance data are available at: [https://www.michigan.gov/documents/MIFluFocus\\_1\\_5\\_06\\_146893\\_7.pdf](https://www.michigan.gov/documents/MIFluFocus_1_5_06_146893_7.pdf)
- State and county level influenza vaccination coverage data are available at: <https://www.michigan.gov/flu/0,6720,7-321-101697---,00.html>
- Disease burden of flu in the United States: <https://www.cdc.gov/flu/about/burden/index.html>
- Preventing Seasonal Flu: <https://www.cdc.gov/flu/prevent/index.html>
- Season flu vaccine effectiveness studies: <https://www.cdc.gov/flu/vaccines-work/effectiveness-studies.htm>
- Flu vaccine finder: <https://www.vaccines.gov/find-vaccines/>
- CDC health alert on increasing seasonal influenza activity especially among young adults in college and university settings. November 24, 2021: <https://www.emergency.cdc.gov/han/2021/han00458.asp>

**Note:** This surveillance report is based on preliminary data. Charts and figures are subject to change as the data are updated.

Compiled by Derick N. Chia, MPH  
Epidemiologist at OCDPH  
Email: [dchia@miottawa.org](mailto:dchia@miottawa.org)