

Monthly Reportable Disease Summary

January 2010



Ottawa County Health Department
12251 James St
Holland, MI 49424

The data in the Monthly Disease Report are provisional, based on current reports in the Michigan Disease Surveillance System (MDSS) made by local health departments. The MDSS is a dynamic, continually active system: counts of disease are constantly changing as cases are investigated, confirmed as cases, or ruled out as not meeting the case definition. The Monthly Disease Report reflects this constant activity as the numbers may slightly fluctuate each month. Therefore, it should be kept in mind that numbers in the Monthly Disease Report are NOT final and should be used only to generally monitor trends over time. Suspected, probable or laboratory confirmed cases of the reportable condition are included in the report.

Specific data requests and questions should be directed towards:

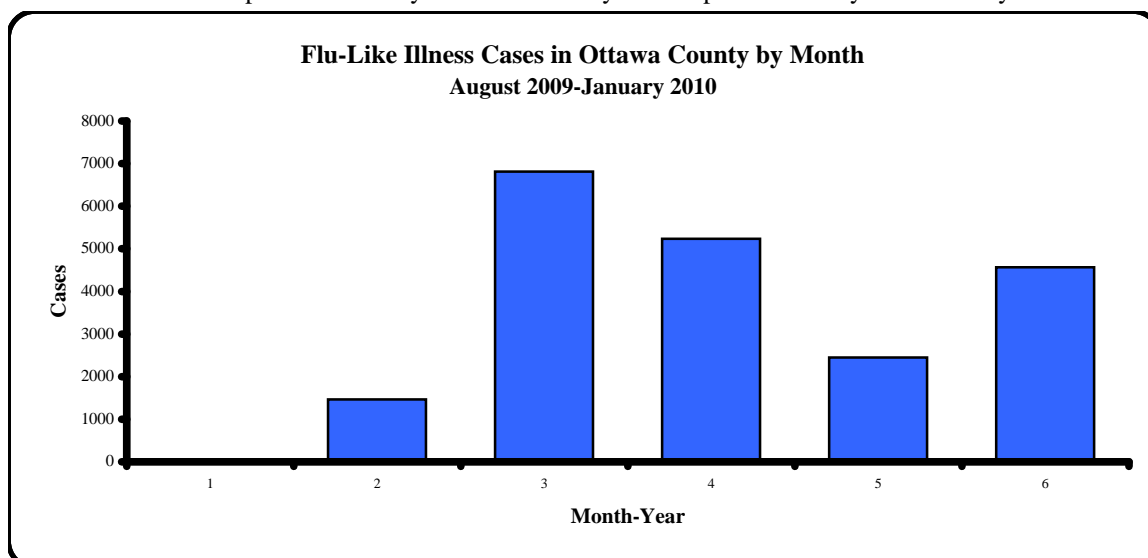
Lis McNeil RN BSN PEM
Communicable Disease/TB/STD Clinical Supervisor
lmcneil@miottawa.org
(616)393-5735

Disease Group	Reportable Condition	Cases Reported in Last 4 Months**				Total Cases Reported***			
		Oct-09	Nov-09	Dec-09	Jan-10	2007	2008	2009	2010
Vectorborne	Ehrlichiosis, Ehrlichia chaffeensis	-	-	-	-	-	-	-	-
	Ehrlichiosis, Ehrlichia ewingii	-	-	-	-	-	-	-	-
	Ehrlichiosis, human granulocytic*	-	-	-	-	-	-	-	-
	Ehrlichiosis, human monocytic*	-	-	-	-	-	-	-	-
	Ehrlichiosis, human other/undetermined	-	-	-	-	-	-	-	-
	Ehrlichosis human, other, unsp*	-	-	-	-	-	-	-	-
	Encephalitis, California	-	-	-	-	-	-	-	-
	Encephalitis, Eastern Equine	-	-	-	-	-	-	-	-
	Encephalitis, Powassan	-	-	-	-	-	-	-	-
	Encephalitis, St. Louis	-	-	-	-	-	-	-	-
	Encephalitis, Western Equine	-	-	-	-	-	-	-	-
	Lyme Disease	1	-	-	-	8	4	11	-
	Malaria	-	-	-	-	-	-	-	-
	Rocky Mt Spotted Fever	-	-	-	-	1	-	-	-
	Typhus	-	-	-	-	-	-	-	-
	West Nile Virus	-	-	-	-	-	-	-	-
	Yellow Fever	-	-	-	-	-	-	-	-
Vectorborne Subtotal		1	-	-	-	11	4	11	-
Viral Hepatitis	Hepatitis A	-	-	-	-	12	8	3	4
	Hepatitis B, Acute	1	-	-	1	7	4	2	2
	Hepatitis B, Chronic	7	4	2	4	31	56	63	18
	Hepatitis B, Perinatal	-	-	-	-	-	-	-	-
	Hepatitis C, Acute	-	-	-	1	4	3	-	1
	Hepatitis C, Chronic	12	11	6	12	94	88	97	33
	Hepatitis C, Unknown*	-	-	-	-	3	7	-	-
	Hepatitis D	-	-	-	-	-	-	-	-
	Hepatitis E	-	1	-	-	-	-	1	-
	Hepatitis Non A Non B	-	-	-	-	-	-	-	-
	Viral Hepatitis Subtotal		20	16	8	18	151	166	166
Total		7,007	5,368	2,526	4,661	20,828	29,318	35,382	13,553

* Indicates disease no longer reported into the MDSS on an individual cases basis.

** Data for cases reported in last four months is based on week case was referred to the health department

*** Data for cases reported in last 4 years is for entire year except for current year which is year to date



Monthly Reportable Disease Summary

February 2010



Ottawa County Health Department
12251 James St
Holland, MI 49424

The data in the Monthly Disease Report are provisional, based on current reports in the Michigan Disease Surveillance System (MDSS) made by local health departments. The MDSS is a dynamic, continually active system: counts of disease are constantly changing as cases are investigated, confirmed as cases, or ruled out as not meeting the case definition. The Monthly Disease Report reflects this constant activity as the numbers may slightly fluctuate each month. Therefore, it should be kept in mind that numbers in the Monthly Disease Report are NOT final and should be used only to generally monitor trends over time. Suspected, probable or laboratory confirmed cases of the reportable condition are included in the report.

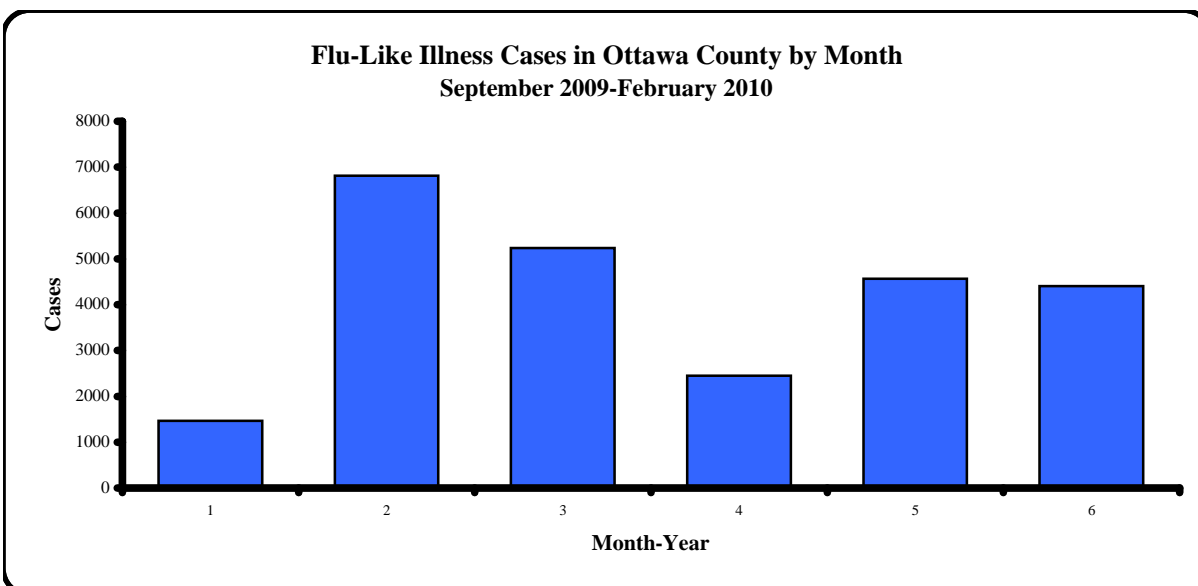
Specific data requests and questions should be directed towards:

Lis McNeil RN BSN PEM
Communicable Disease/TB/STD Clinical Supervisor
lmcneil@miottawa.org
(616)393-5735

Disease Group	Reportable Condition	Cases Reported in Last 4 Months*				Total Cases Reported**			
		Nov-09	Dec-09	Jan-10	Feb-10	2007	2008	2009	2010
Vectorborne	Ehrlichiosis, Ehrlichia chaffeensis	-	-	-	-	-	-	-	-
	Ehrlichiosis, Ehrlichia ewingii	-	-	-	-	-	-	-	-
	Ehrlichiosis, human granulocytic*	-	-	-	-	-	-	-	-
	Ehrlichiosis, human monocytic*	-	-	-	-	-	-	-	-
	Ehrlichiosis, human other/undetermined	-	-	-	-	-	-	-	-
	Ehrlichosis human, other, unsp*	-	-	-	-	-	-	-	-
	Encephalitis, California	-	-	-	-	-	-	-	-
	Encephalitis, Eastern Equine	-	-	-	-	-	-	-	-
	Encephalitis, Powassan	-	-	-	-	-	-	-	-
	Encephalitis, St. Louis	-	-	-	-	-	-	-	-
	Encephalitis, Western Equine	-	-	-	-	-	-	-	-
	Lyme Disease	-	-	-	-	8	4	11	-
	Malaria	-	-	-	-	-	-	-	-
	Rocky Mt Spotted Fever	-	-	-	-	1	-	-	-
	Typhus	-	-	-	-	-	-	-	-
	West Nile Virus	-	-	-	-	-	-	-	-
	Yellow Fever	-	-	-	-	-	-	-	-
Vectorborne Subtotal		-	-	-	-	11	4	11	-
Viral Hepatitis	Hepatitis A	-	-	-	-	12	8	3	4
	Hepatitis B, Acute	-	-	1	-	7	4	2	2
	Hepatitis B, Chronic	4	2	4	6	31	56	63	18
	Hepatitis B, Perinatal	-	-	-	-	-	-	-	-
	Hepatitis C, Acute	-	-	1	-	4	3	-	1
	Hepatitis C, Chronic	11	6	12	10	94	88	97	33
	Hepatitis C, Unknown*	-	-	-	-	3	7	-	-
	Hepatitis D	-	-	-	-	-	-	-	-
	Hepatitis E	1	-	-	-	-	-	1	-
	Hepatitis Non A Non B	-	-	-	-	-	-	-	-
	Viral Hepatitis Subtotal		16	8	18	16	151	166	166
Total		5,368	2,526	4,661	4,480	20,828	29,318	35,382	13,553

** Data for cases reported in last four months is based on week case was referred to the health department

*** Data for cases reported in last 4 years is for entire year except for current year which is year to date



Monthly Reportable Disease Summary

March 2010



Ottawa County Health Department
12251 James St
Holland, MI 49424

The data in the Monthly Disease Report are provisional, based on current reports in the Michigan Disease Surveillance System (MDSS) made by local health departments. The MDSS is a dynamic, continually active system: counts of disease are constantly changing as cases are investigated, confirmed as cases, or ruled out as not meeting the case definition. The Monthly Disease Report reflects this constant activity as the numbers may slightly fluctuate each month. Therefore, it should be kept in mind that numbers in the Monthly Disease Report are NOT final and should be used only to generally monitor trends over time. Suspected, probable or laboratory confirmed cases of the reportable condition are included in the report.

Specific data requests and questions should be directed towards:

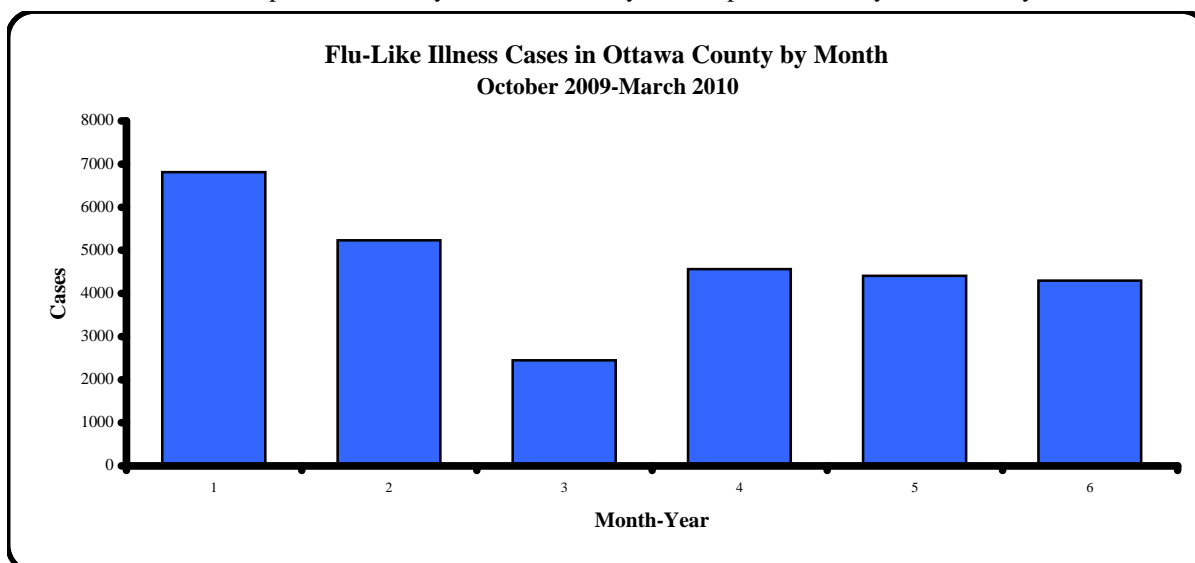
Lis McNeil RN BSN PEM
Communicable Disease/TB/STD Clinical Supervisor
lmcneil@miottawa.org
(616)393-5735

Disease Group	Reportable Condition	Cases Reported in Last 4 Months*				Total Cases Reported**			
		Dec-09	Jan-10	Feb-10	Mar-10	2007	2008	2009	2010
Vectorborne	Ehrlichiosis, Ehrlichia chaffeensis	-	-	-	-	-	-	-	-
	Ehrlichiosis, Ehrlichia ewingii	-	-	-	-	-	-	-	-
	Ehrlichiosis, human granulocytic*	-	-	-	-	-	-	-	-
	Ehrlichiosis, human monocytic*	-	-	-	-	-	-	-	-
	Ehrlichiosis, human other/undetermined	-	-	-	-	-	-	-	-
	Ehrlichosis human, other, unsp*	-	-	-	-	-	-	-	-
	Encephalitis, California	-	-	-	-	-	-	-	-
	Encephalitis, Eastern Equine	-	-	-	-	-	-	-	-
	Encephalitis, Powassan	-	-	-	-	-	-	-	-
	Encephalitis, St. Louis	-	-	-	-	-	-	-	-
	Encephalitis, Western Equine	-	-	-	-	-	-	-	-
	Lyme Disease	-	-	-	-	8	4	11	-
	Malaria	-	-	-	-	-	-	-	-
	Rocky Mt Spotted Fever	-	-	-	-	1	-	-	-
	Typhus	-	-	-	-	-	-	-	-
	West Nile Virus	-	-	-	-	-	-	-	-
	Yellow Fever	-	-	-	-	-	-	-	-
Vectorborne Subtotal	-	-	-	-	11	4	11	-	
Viral Hepatitis	Hepatitis A	-	-	-	4	12	8	3	4
	Hepatitis B, Acute	-	1	-	1	7	4	2	2
	Hepatitis B, Chronic	2	4	6	8	31	56	63	18
	Hepatitis B, Perinatal	-	-	-	-	-	-	-	-
	Hepatitis C, Acute	-	1	-	-	4	3	-	1
	Hepatitis C, Chronic	6	12	10	11	94	88	97	33
	Hepatitis C, Unknown*	-	-	-	-	3	7	-	-
	Hepatitis D	-	-	-	-	-	-	-	-
	Hepatitis E	-	-	-	-	-	-	1	-
	Hepatitis Non A Non B	-	-	-	-	-	-	-	-
	Viral Hepatitis Subtotal	8	18	16	24	151	166	166	58
Total		2,526	4,661	4,480	4,398	20,828	29,318	35,382	13,553

* Indicates disease no longer reported into the MDSS on an individual cases basis.

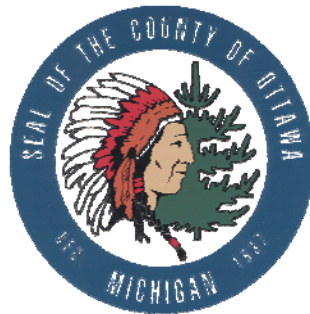
** Data for cases reported in last four months is based on week case was referred to the health department

*** Data for cases reported in last 4 years is for entire year except for current year which is year to date



Monthly Reportable Disease Summary

April 2010



Ottawa County Health Department
12251 James St
Holland, MI 49424

The data in the Monthly Disease Report are provisional, based on current reports in the Michigan Disease Surveillance System (MDSS) made by local health departments. The MDSS is a dynamic, continually active system: counts of disease are constantly changing as cases are investigated, confirmed as cases, or ruled out as not meeting the case definition. The Monthly Disease Report reflects this constant activity as the numbers may slightly fluctuate each month. Therefore, it should be kept in mind that numbers in the Monthly Disease Report are NOT final and should be used only to generally monitor trends over time. Suspected, probable or laboratory confirmed cases of the reportable condition are included in the report.

Specific data requests and questions should be directed towards:

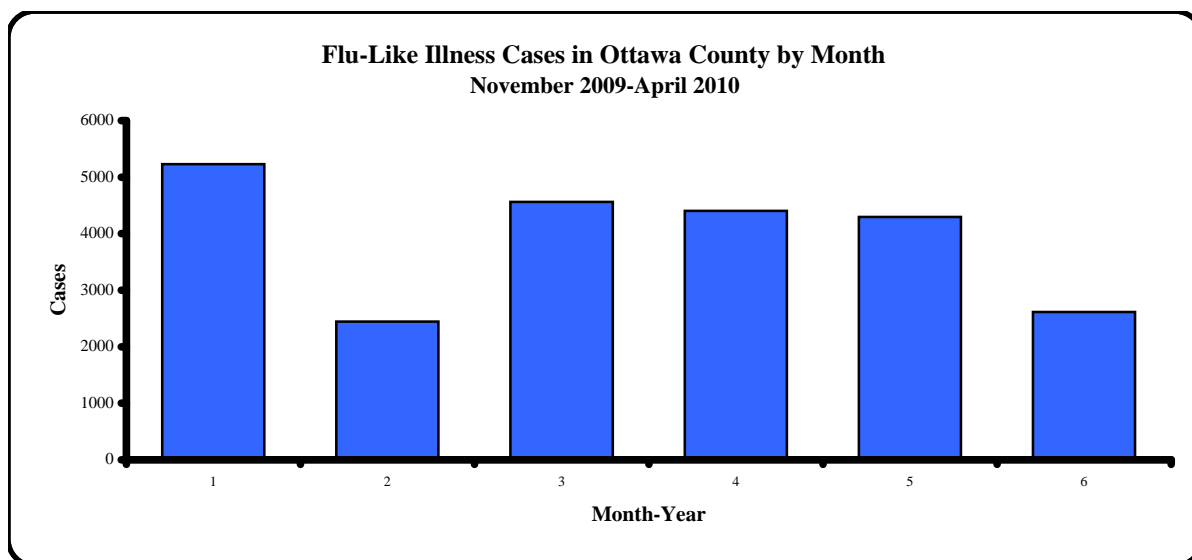
Lis McNeil RN BSN PEM
Communicable Disease/TB/STD Clinical Supervisor
lmcneil@miottawa.org
(616)393-5735

Disease Group	Reportable Condition	Cases Reported in Last 4 Months*				Total Cases Reported**			
		Jan-10	Feb-10	Mar-10	Apr-10	2007	2008	2009	2010
Vectorborne	Ehrlichiosis, Ehrlichia chaffeensis	-	-	-	-	-	-	-	-
	Ehrlichiosis, Ehrlichia ewingii	-	-	-	-	-	-	-	-
	Ehrlichiosis, human granulocytic*	-	-	-	-	-	-	-	-
	Ehrlichiosis, human monocytic*	-	-	-	-	-	-	-	-
	Ehrlichiosis, human other/undetermined	-	-	-	-	-	-	-	-
	Ehrlichosis human, other, unsp*	-	-	-	-	-	-	-	-
	Encephalitis, California	-	-	-	-	-	-	-	-
	Encephalitis, Eastern Equine	-	-	-	-	-	-	-	-
	Encephalitis, Powassan	-	-	-	-	-	-	-	-
	Encephalitis, St. Louis	-	-	-	-	-	-	-	-
	Encephalitis, Western Equine	-	-	-	-	-	-	-	-
	Lyme Disease	-	-	-	-	8	4	11	-
	Malaria	-	-	-	-	-	-	-	-
	Rocky Mt Spotted Fever	-	-	-	-	1	-	-	-
	Typhus	-	-	-	-	-	-	-	-
	West Nile Virus	-	-	-	-	-	-	-	-
	Yellow Fever	-	-	-	-	-	-	-	-
Vectorborne Subtotal	-	-	-	-	11	4	11	-	
Viral Hepatitis	Hepatitis A	-	-	4	1	12	8	3	5
	Hepatitis B, Acute	1	-	1	-	7	4	2	2
	Hepatitis B, Chronic	4	6	8	3	31	56	63	24
	Hepatitis B, Perinatal	-	-	-	-	-	-	-	-
	Hepatitis C, Acute	1	-	-	3	4	3	-	4
	Hepatitis C, Chronic	12	10	11	5	94	88	97	38
	Hepatitis C, Unknown*	-	-	-	-	3	7	-	-
	Hepatitis D	-	-	-	-	-	-	-	-
	Hepatitis E	-	-	-	-	-	-	1	-
	Hepatitis Non A Non B	-	-	-	-	-	-	-	-
	Viral Hepatitis Subtotal	18	16	24	12	151	166	166	73
Total		4,661	4,481	4,402	2,714	20,828	29,318	35,385	16,279

* Indicates disease no longer reported into the MDSS on an individual cases basis.

** Data for cases reported in last four months is based on week case was referred to the health department

*** Data for cases reported in last 4 years is for entire year except for current year which is year to date



Monthly Reportable Disease Summary

July 2010



Ottawa County Health Department
12251 James St
Holland, MI 49424

The data in the Monthly Disease Report are provisional, based on current reports in the Michigan Disease Surveillance System (MDSS) made by local health departments. The MDSS is a dynamic, continually active system: counts of disease are constantly changing as cases are investigated, confirmed as cases, or ruled out as not meeting the case definition. The Monthly Disease Report reflects this constant activity as the numbers may slightly fluctuate each month. Therefore, it should be kept in mind that numbers in the Monthly Disease Report are NOT final and should be used only to generally monitor trends over time. Suspected, probable or laboratory confirmed cases of the reportable condition are included in the report.

Specific data requests and questions should be directed towards:

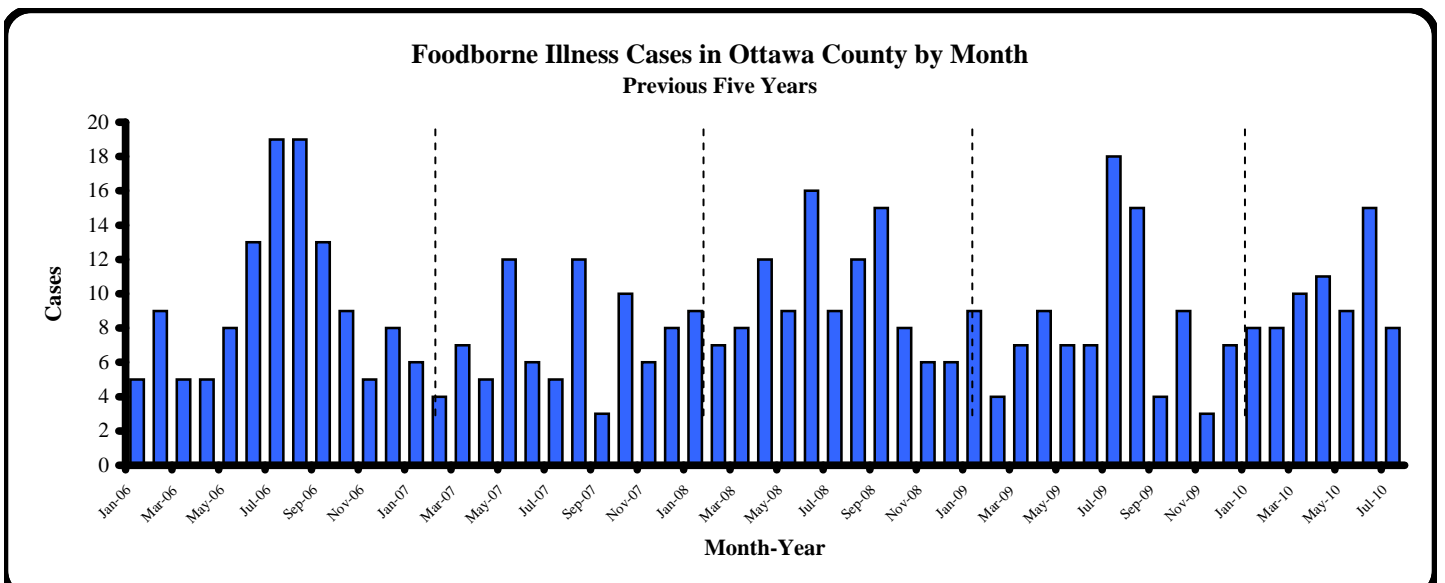
Lis McNeil RN BSN PEM
Communicable Disease/TB/STD Clinical Supervisor
lmcneil@miottawa.org
(616)393-5735

Disease Group	Reportable Condition	Cases Reported in Last 4 Months*				Total Cases Reported**			
		Apr-10	May-10	Jun-10	Jul-10	2007	2008	2009	2010
Vectorborne	Ehrlichiosis, Ehrlichia chaffeensis	-	-	-	-	-	-	-	-
	Ehrlichiosis, Ehrlichia ewingii	-	-	-	-	-	-	-	-
	Ehrlichiosis, human granulocytic*	-	-	-	-	-	-	-	-
	Ehrlichiosis, human monocytic*	-	-	-	-	-	-	-	-
	Ehrlichiosis, human other/undetermined	-	-	-	-	-	-	-	-
	Ehrlichosis human, other, unsp*	-	-	-	-	-	-	-	-
	Encephalitis, California	-	-	-	-	-	-	-	-
	Encephalitis, Eastern Equine	-	-	-	-	-	-	-	-
	Encephalitis, Powassan	-	-	-	-	-	-	-	-
	Encephalitis, St. Louis	-	-	-	-	-	-	-	-
	Encephalitis, Western Equine	-	-	-	-	-	-	-	-
	Lyme Disease	-	1	-	1	8	4	11	4
	Malaria	-	-	-	-	-	-	-	-
	Rocky Mt Spotted Fever	-	-	-	-	1	-	-	-
	Typhus	-	-	-	-	-	-	-	-
	West Nile Virus	-	-	-	-	-	-	-	1
	Yellow Fever	-	-	-	-	-	-	-	-
Vectorborne Subtotal		-	1	-	1	11	4	11	5
Viral Hepatitis	Hepatitis A	1	-	-	-	12	8	3	5
	Hepatitis B, Acute	-	1	-	-	7	4	2	3
	Hepatitis B, Chronic	3	6	4	3	31	56	63	40
	Hepatitis B, Perinatal	-	-	-	-	-	-	-	-
	Hepatitis C, Acute	-	-	-	-	4	3	-	2
	Hepatitis C, Chronic	5	2	5	6	94	88	97	61
	Hepatitis C, Unknown*	-	-	-	-	3	7	-	-
	Hepatitis D	-	1	-	-	-	-	-	1
	Hepatitis E	-	-	-	-	-	-	1	-
	Hepatitis Non A Non B	-	-	-	-	-	-	-	-
	Viral Hepatitis Subtotal	9	10	9	9	151	166	166	112
Total		2,717	2,676	828	176	20,828	29,317	35,383	21,509

* Indicates disease no longer reported into the MDSS on an individual cases basis.

** Data for cases reported in last four months is based on week case was referred to the health department

*** Data for cases reported in last 4 years is for entire year except for current year which is year to date



Disease Group	Reportable Condition	<u>Cases Reported in Last 4 Months*</u>				<u>Total Cases Reported**</u>			
		Apr-10	May-10	Jun-10	Jul-10	2007	2008	2009	2010

Monthly Reportable Disease Summary

August 2010



Ottawa County Health Department
12251 James St
Holland, MI 49424

The data in the Monthly Disease Report are provisional, based on current reports in the Michigan Disease Surveillance System (MDSS) made by local health departments. The MDSS is a dynamic, continually active system: counts of disease are constantly changing as cases are investigated, confirmed as cases, or ruled out as not meeting the case definition. The Monthly Disease Report reflects this constant activity as the numbers may slightly fluctuate each month. Therefore, it should be kept in mind that numbers in the Monthly Disease Report are NOT final and should be used only to generally monitor trends over time. Suspected, probable or laboratory confirmed cases of the reportable condition are included in the report.

Specific data requests and questions should be directed towards:

Lis McNeil RN BSN PEM
Communicable Disease/TB/STD Clinical Supervisor
lmcneil@miottawa.org
(616)393-5735

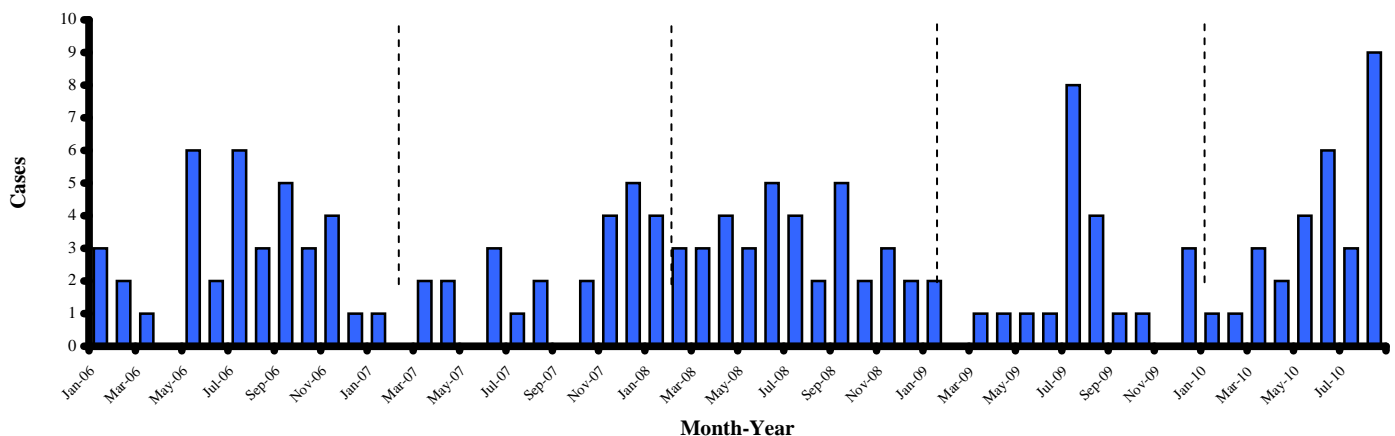
Disease Group	Reportable Condition	Cases Reported in Last 4 Months*				Total Cases Reported**			
		May-10	Jun-10	Jul-10	Aug-10	2007	2008	2009	2010
Vectorborne	Ehrlichiosis, Ehrlichia chaffeensis	-	-	-	-	-	-	-	-
	Ehrlichiosis, Ehrlichia ewingii	-	-	-	-	-	-	-	-
	Ehrlichiosis, human granulocytic*	-	-	-	-	-	-	-	-
	Ehrlichiosis, human monocytic*	-	-	-	-	-	-	-	-
	Ehrlichiosis, human other/undetermined	-	-	-	-	-	-	-	-
	Ehrlichosis human, other, unsp*	-	-	-	-	-	-	-	-
	Encephalitis, California	-	-	-	-	-	-	-	-
	Encephalitis, Eastern Equine	-	-	-	-	-	-	-	-
	Encephalitis, Powassan	-	-	-	-	-	-	-	-
	Encephalitis, St. Louis	-	-	-	-	-	-	-	-
	Encephalitis, Western Equine	-	-	-	-	-	-	-	-
	Lyme Disease	1	-	1	-	8	4	11	4
	Malaria	-	-	-	-	-	-	-	-
	Rocky Mt Spotted Fever	-	-	-	-	1	-	-	-
	Typhus	-	-	-	-	-	-	-	-
	West Nile Virus	-	-	-	-	-	-	-	1
	Yellow Fever	-	-	-	-	-	-	-	-
	Vectorborne Subtotal	1	-	1	-	11	4	11	5
Viral Hepatitis	Hepatitis A	-	-	-	-	12	8	3	5
	Hepatitis B, Acute	1	-	-	-	7	4	2	3
	Hepatitis B, Chronic	6	4	3	3	31	56	63	40
	Hepatitis B, Perinatal	-	-	-	-	-	-	-	-
	Hepatitis C, Acute	-	-	-	-	4	3	-	2
	Hepatitis C, Chronic	2	5	6	3	94	88	97	61
	Hepatitis C, Unknown*	-	-	-	-	3	7	-	-
	Hepatitis D	1	-	-	-	-	-	-	1
	Hepatitis E	-	-	-	-	-	-	1	-
	Hepatitis Non A Non B	-	-	-	-	-	-	-	-
	Viral Hepatitis Subtotal	10	9	9	6	151	166	166	112
	Total		2,676	828	176	188	20,828	29,317	35,383

* Indicates disease no longer reported into the MDSS on an individual cases basis.

** Data for cases reported in last four months is based on week case was referred to the health department

*** Data for cases reported in last 4 years is for entire year except for current year which is year to date

Campylobacter Cases in Ottawa County by Month
Previous Five Years



Monthly Reportable Disease Summary

September 2010



Ottawa County Health Department
12251 James St
Holland, MI 49424

The data in the Monthly Disease Report are provisional, based on current reports in the Michigan Disease Surveillance System (MDSS) made by local health departments. The MDSS is a dynamic, continually active system: counts of disease are constantly changing as cases are investigated, confirmed as cases, or ruled out as not meeting the case definition. The Monthly Disease Report reflects this constant activity as the numbers may slightly fluctuate each month. Therefore, it should be kept in mind that numbers in the Monthly Disease Report are NOT final and should be used only to generally monitor trends over time. Suspected, probable or laboratory confirmed cases of the reportable condition are included in the report.

Specific data requests and questions should be directed towards:

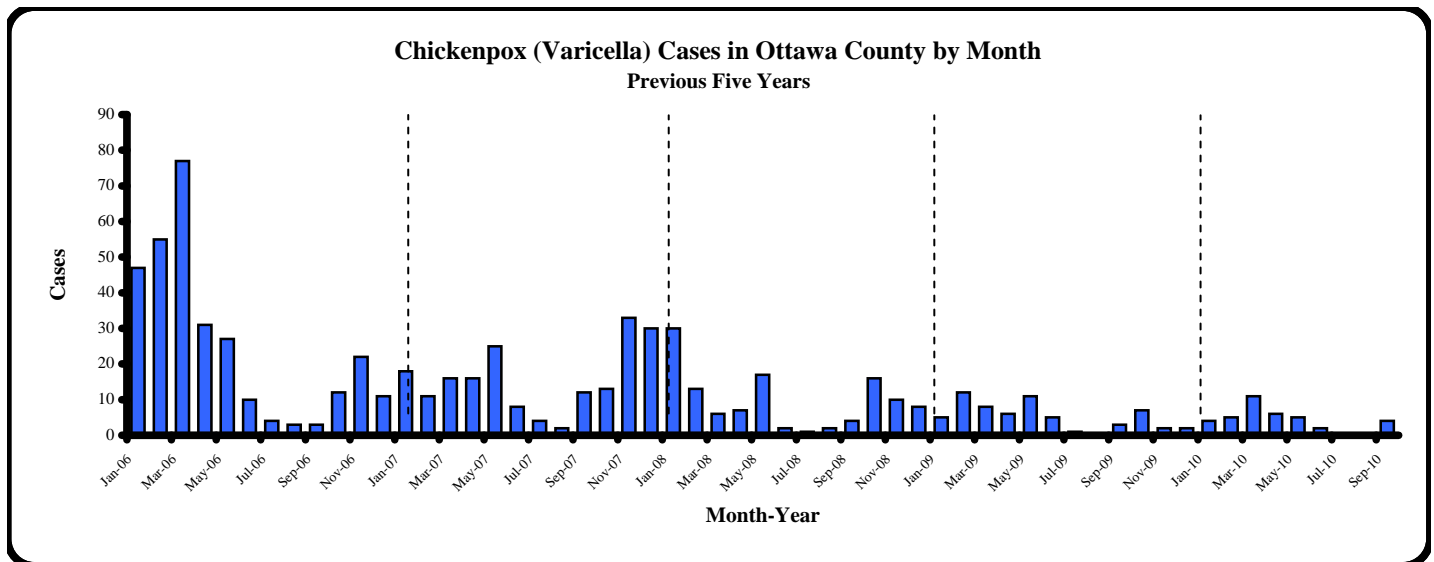
Lis McNeil RN BSN PEM
Communicable Disease/TB/STD Clinical Supervisor
lmcneil@miottawa.org
(616)393-5735

Disease Group	Reportable Condition	Cases Reported in Last 4 Months*				Total Cases Reported**			
		Jun-10	Jul-10	Aug-10	Sep-10	2007	2008	2009	2010
Vectorborne	Ehrlichiosis, Ehrlichia chaffeensis	-	-	-	-	-	-	-	-
	Ehrlichiosis, Ehrlichia ewingii	-	-	-	-	-	-	-	-
	Ehrlichiosis, human granulocytic*	-	-	-	-	-	-	-	-
	Ehrlichiosis, human monocytic*	-	-	-	-	-	-	-	-
	Ehrlichiosis, human other/undetermined	-	-	-	-	-	-	-	-
	Ehrlichosis human, other, unsp*	-	-	-	-	-	-	-	-
	Encephalitis, California	-	-	-	-	-	-	-	-
	Encephalitis, Eastern Equine	-	-	-	-	-	-	-	-
	Encephalitis, Powassan	-	-	-	-	-	-	-	-
	Encephalitis, St. Louis	-	-	-	-	-	-	-	-
	Encephalitis, Western Equine	-	-	-	-	-	-	-	-
	Lyme Disease	-	1	-	2	8	4	11	4
	Malaria	-	-	-	-	-	-	-	-
	Rocky Mt Spotted Fever	-	-	-	-	1	-	-	-
	Typhus	-	-	-	-	-	-	-	-
	West Nile Virus	-	-	-	1	-	-	-	1
	Yellow Fever	-	-	-	-	-	-	-	-
Vectorborne Subtotal		-	1	-	3	11	4	11	5
Viral Hepatitis	Hepatitis A	-	-	-	-	12	8	3	5
	Hepatitis B, Acute	-	-	-	-	7	4	2	3
	Hepatitis B, Chronic	4	3	3	4	31	56	63	40
	Hepatitis B, Perinatal	-	-	-	-	-	-	-	-
	Hepatitis C, Acute	-	-	-	1	4	3	-	2
	Hepatitis C, Chronic	5	6	3	6	94	88	97	61
	Hepatitis C, Unknown*	-	-	-	-	3	7	-	-
	Hepatitis D	-	-	-	-	-	-	-	1
	Hepatitis E	-	-	-	-	-	-	1	-
	Hepatitis Non A Non B	-	-	-	-	-	-	-	-
	Viral Hepatitis Subtotal		9	9	6	11	151	166	166
Total		828	176	188	1,368	20,828	29,317	35,383	21,509

* Indicates disease no longer reported into the MDSS on an individual cases basis.

** Data for cases reported in last four months is based on week case was referred to the health department

*** Data for cases reported in last 4 years is for entire year except for current year which is year to date



Monthly Reportable Disease Summary

October 2010



Ottawa County Health Department
12251 James St
Holland, MI 49424

The data in the Monthly Disease Report are provisional, based on current reports in the Michigan Disease Surveillance System (MDSS) made by local health departments. The MDSS is a dynamic, continually active system: counts of disease are constantly changing as cases are investigated, confirmed as cases, or ruled out as not meeting the case definition. The Monthly Disease Report reflects this constant activity as the numbers may slightly fluctuate each month. Therefore, it should be kept in mind that numbers in the Monthly Disease Report are NOT final and should be used only to generally monitor trends over time. Suspected, probable or laboratory confirmed cases of the reportable condition are included in the report.

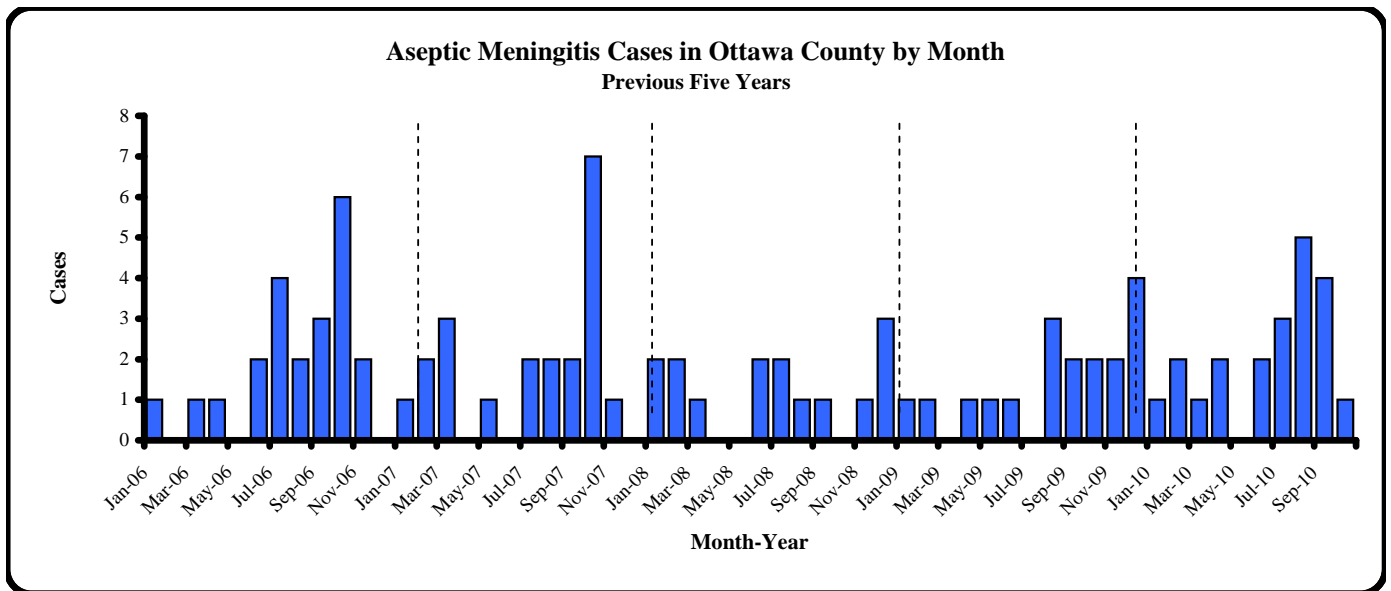
Specific data requests and questions should be directed towards:

Lis McNeil RN BSN PEM
Communicable Disease/TB/STD Clinical Supervisor
lmcneil@miottawa.org
(616)393-5735

Disease Group	Reportable Condition	Cases Reported in Last 4 Months*				Total Cases Reported**			
		Jul-10	Aug-10	Sep-10	Oct-10	2007	2008	2009	2010
Vectorborne	Ehrlichiosis, human other/undetermined	-	-	-	-	-	-	-	-
	Ehrlichiosis human, other, unsp*	-	-	-	-	-	-	-	-
	Encephalitis, California	-	-	-	-	-	-	-	-
	Encephalitis, Eastern Equine	-	-	-	-	-	-	-	-
	Encephalitis, Powassan	-	-	-	-	-	-	-	-
	Encephalitis, St. Louis	-	-	-	-	-	-	-	-
	Encephalitis, Western Equine	-	-	-	-	-	-	-	-
	Lyme Disease	1	-	3	1	8	4	11	6
	Malaria	-	-	-	-	-	-	-	-
	Rickettsial Disease - Spotted Fever	-	-	-	-	1	-	-	-
	Rickettsial Disease - Typhus	-	-	-	-	-	-	-	-
	West Nile Virus	-	-	1	-	-	-	-	1
	Yellow Fever	-	-	-	-	-	-	-	-
	Vectorborne Subtotal	1	-	4	1	11	4	11	7
Viral Hepatitis	Hepatitis A	-	-	-	-	12	8	3	5
	Hepatitis B, Acute	-	-	-	-	7	4	2	2
	Hepatitis B, Chronic	3	3	4	1	31	56	63	42
	Hepatitis B, Perinatal	-	-	-	-	-	-	-	-
	Hepatitis C, Acute	-	-	1	-	4	3	-	2
	Hepatitis C, Chronic	6	3	5	6	94	88	97	64
	Hepatitis C, Unknown*	-	-	-	-	3	7	-	-
	Hepatitis D	-	-	-	-	-	-	-	1
	Hepatitis E	-	-	-	-	-	-	1	-
	Hepatitis Non A Non B	-	-	-	-	-	-	-	-
	Viral Hepatitis Subtotal	9	6	10	7	151	166	166	116
Total	176	189	1,366	4,033	20,823	29,312	35,372	25,529	

* Data for cases reported in last four months is based on week case was referred to the health department

** Data for cases reported in last 4 years is for entire year except for current year which is year to date



Monthly Reportable Disease Summary

November 2010



Ottawa County Health Department
12251 James St
Holland, MI 49424

The data in the Monthly Disease Report are provisional, based on current reports in the Michigan Disease Surveillance System (MDSS) made by local health departments. The MDSS is a dynamic, continually active system: counts of disease are constantly changing as cases are investigated, confirmed as cases, or ruled out as not meeting the case definition. The Monthly Disease Report reflects this constant activity as the numbers may slightly fluctuate each month. Therefore, it should be kept in mind that numbers in the Monthly Disease Report are NOT final and should be used only to generally monitor trends over time. Suspected, probable or laboratory confirmed cases of the reportable condition are included in the report.

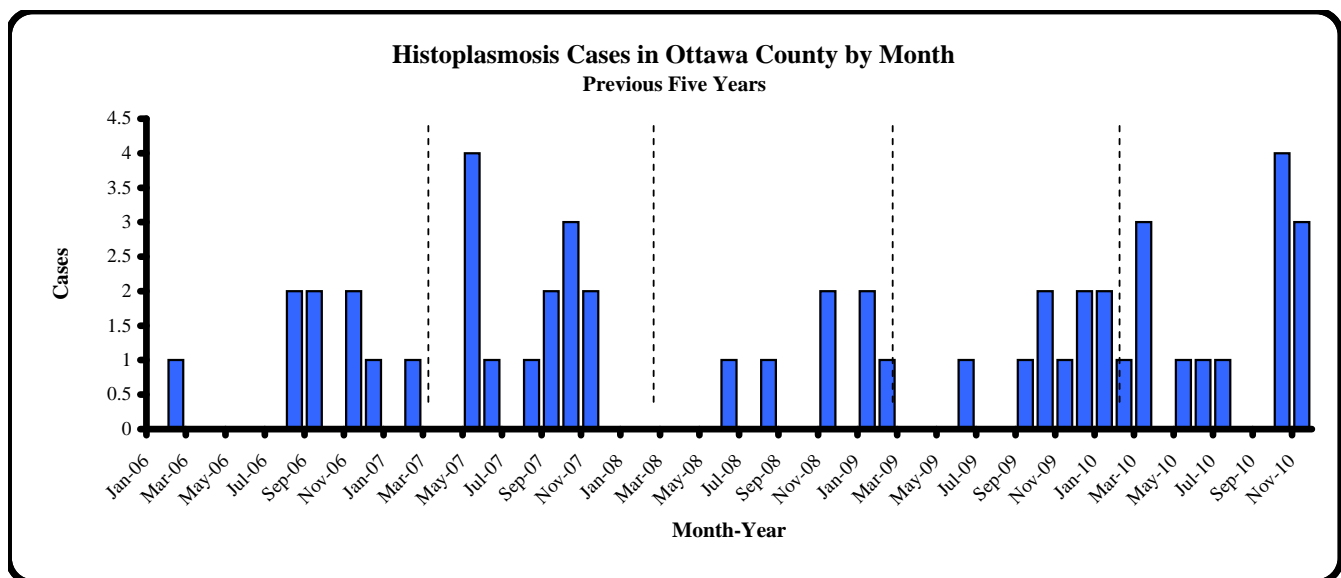
Specific data requests and questions should be directed towards:

Lis McNeil RN BSN PEM
Communicable Disease/TB/STD Clinical Supervisor
lmcneil@miottawa.org
(616)393-5735

Disease Group	Reportable Condition	Cases Reported in Last 4 Months*				Total Cases Reported**			
		Aug-10	Sep-10	Oct-10	Nov-10	2007	2008	2009	2010
Vectorborne	Ehrlichiosis, human other/undetermined	-	-	-	-	-	-	-	-
	Ehrlichiosis human, other, unsp*	-	-	-	-	-	-	-	-
	Encephalitis, California	-	-	-	-	-	-	-	-
	Encephalitis, Eastern Equine	-	-	-	-	-	-	-	-
	Encephalitis, Powassan	-	-	-	-	-	-	-	-
	Encephalitis, St. Louis	-	-	-	-	-	-	-	-
	Encephalitis, Western Equine	-	-	-	-	-	-	-	-
	Lyme Disease	-	3	1	-	8	4	11	6
	Malaria	-	-	-	-	-	-	-	-
	Rickettsial Disease - Spotted Fever	-	-	-	-	1	-	-	-
	Rickettsial Disease - Typhus	-	-	-	-	-	-	-	-
	West Nile Virus	-	1	-	-	-	-	-	1
	Yellow Fever	-	-	-	-	-	-	-	-
	Vectorborne Subtotal	-	4	1	-	11	4	11	7
Viral Hepatitis	Hepatitis A	-	-	-	-	12	8	3	5
	Hepatitis B, Acute	-	-	-	-	7	4	2	2
	Hepatitis B, Chronic	3	4	1	4	31	56	63	46
	Hepatitis B, Perinatal	-	-	-	-	-	-	-	-
	Hepatitis C, Acute	-	1	-	-	4	3	-	2
	Hepatitis C, Chronic	3	5	6	2	94	88	97	66
	Hepatitis C, Unknown*	-	-	-	-	3	7	-	-
	Hepatitis D	-	-	-	-	-	-	-	1
	Hepatitis E	-	-	-	-	-	-	1	-
	Hepatitis Non A Non B	-	-	-	-	-	-	-	-
	Viral Hepatitis Subtotal	6	10	7	6	151	166	166	122
Total	189	1,366	4,033	3,335	20,823	29,312	35,372	28,864	

* Data for cases reported in last four months is based on week case was referred to the health department

** Data for cases reported in last 4 years is for entire year except for current year which is year to date



Monthly Reportable Disease Summary

December 2010



Ottawa County Health Department
12251 James St
Holland, MI 49424

The data in the Monthly Disease Report are provisional, based on current reports in the Michigan Disease Surveillance System (MDSS) made by local health departments. The MDSS is a dynamic, continually active system: counts of disease are constantly changing as cases are investigated, confirmed as cases, or ruled out as not meeting the case definition. The Monthly Disease Report reflects this constant activity as the numbers may slightly fluctuate each month. Therefore, it should be kept in mind that numbers in the Monthly Disease Report are NOT final and should be used only to generally monitor trends over time. Suspected, probable or laboratory confirmed cases of the reportable condition are included in the report.

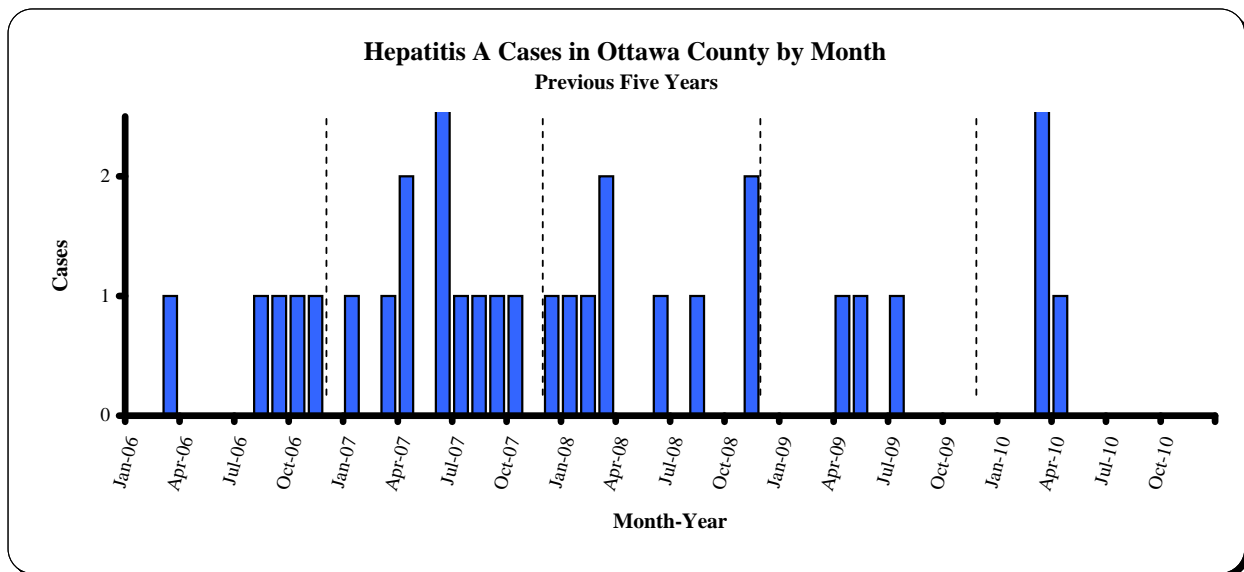
Specific data requests and questions should be directed towards:

Lis McNeil RN BSN PEM
Communicable Disease/TB/STD Clinical Supervisor
lmcneil@miottawa.org
(616)393-5735

Disease Group	Reportable Condition	Cases Reported in Last 4 Months*				Total Cases Reported**			
		Sep-10	Oct-10	Nov-10	Dec-10	2007	2008	2009	2010
Vectorborne	Ehrlichiosis, human other/undetermined	-	-	-	-	-	-	-	-
	Ehrlichiosis human, other, unsp*	-	-	-	-	-	-	-	-
	Encephalitis, California	-	-	-	-	-	-	-	-
	Encephalitis, Eastern Equine	-	-	-	-	-	-	-	-
	Encephalitis, Powassan	-	-	-	-	-	-	-	-
	Encephalitis, St. Louis	-	-	-	-	-	-	-	-
	Encephalitis, Western Equine	-	-	-	-	-	-	-	-
	Lyme Disease	3	1	-	-	8	4	11	6
	Malaria	-	-	-	-	-	-	-	-
	Rickettsial Disease - Spotted Fever	-	-	-	-	1	-	-	-
	Rickettsial Disease - Typhus	-	-	-	-	-	-	-	-
	West Nile Virus	1	-	-	-	-	-	-	1
	Yellow Fever	-	-	-	-	-	-	-	-
	Vectorborne Subtotal	4	1	-	-	11	4	11	7
Viral Hepatitis	Hepatitis A	-	-	-	-	12	8	3	5
	Hepatitis B, Acute	-	-	-	-	7	4	2	2
	Hepatitis B, Chronic	4	1	4	8	31	56	63	54
	Hepatitis B, Perinatal	-	-	-	-	-	-	-	-
	Hepatitis C, Acute	1	-	-	1	4	3	-	3
	Hepatitis C, Chronic	5	6	2	4	94	88	97	70
	Hepatitis C, Unknown*	-	-	-	-	3	7	-	-
	Hepatitis D	-	-	-	-	-	-	-	1
	Hepatitis E	-	-	-	-	-	-	1	-
	Hepatitis Non A Non B	-	-	-	-	-	-	-	-
Viral Hepatitis Subtotal	10	7	6	13	151	166	166	135	
Total		1,366	4,033	3,335	2,980	20,823	29,312	35,372	31,844

* Data for cases reported in last four months is based on week case was referred to the health department

** Data for cases reported in last 4 years is for entire year except for current year which is year to date



Year End Reportable Disease Summary 2010

Ottawa County Health Department
12251 James St
Holland, MI 49424

The data in the Yearly Disease Summary are provisional, based on current reports in the Michigan Disease Surveillance System (MDSS) made by local health departments. The MDSS is a dynamic, continually active system: counts of disease are constantly changing as cases are investigated, confirmed as cases, or ruled out as not meeting the case definition. The Quarterly Disease Summary reflects this constant activity as the numbers may slightly fluctuate each quarter. Therefore, it should be kept in mind that numbers in the Quarterly Disease Summary are NOT final and should be used only to generally monitor trends over time. Suspected, probable, unknown or laboratory confirmed cases of the reportable condition are included in the report.

Disease Group	Reportable Condition	Ottawa County Cases**					Michigan Cases				
		2006	2007	2008	2009	2010	2006	2007	2008	2009	2010
Foodborne	Amebiasis	3	-	1	1	7	58	43	50	27	29
	Botulism - Foodborne	-	-	-	-	-	-	-	-	-	2
	Campylobacter	36	22	39	23	56	912	890	1,037	936	1,300
	Cryptosporidiosis	13	12	13	4	11	150	211	281	291	314
	Escherichia coli O157:H7*	6	-	1	-	-	76	70	153	61	1
	Giardiasis	27	20	25	31	50	712	620	596	674	686
	Listeriosis	-	1	1	-	-	20	23	20	28	33
	Norovirus	-	-	-	-	2	-	-	-	13	126
	Salmonellosis	24	23	20	26	19	993	973	946	952	933
	Shiga toxin, E. Coli, Non O157*	-	2	-	-	-	6	26	29	33	-
	Shiga toxin, E. Coli, Unsp*	-	1	1	4	-	14	35	34	44	1
	Shiga toxin-producing Escherichia coli -- (STEC)	-	-	-	-	3	-	-	-	1	178
	Shigellosis	2	1	7	5	1	150	82	260	216	261
	Typhoid Fever	-	-	-	-	-	7	7	9	11	6
	Yersinia enteritis	-	-	1	-	-	24	23	23	22	15
Foodborne Subtotal		111	82	109	94	149	3,122	3,003	3,438	3,309	3,885
Influenza	Flu Like Disease*	16,427	19,756	28,122	34,038	30,761	390,141	403,335	414,114	702,654	381,876
	Influenza	-	5	17	127	-	98	1,140	2,858	5,633	208
	Influenza, 2009 Novel*	-	-	-	67	2	-	-	-	9,893	516
	Influenza, Novel	-	-	-	60	-	-	1	-	1,514	1
	Influenza Subtotal	16,427	19,761	28,139	34,292	30,763	390,239	404,476	416,972	719,694	382,601
Meningitis	Meningitis - Aseptic	19	20	14	15	18	1,131	975	970	832	906
	Meningitis - Bacterial Other	1	3	3	5	1	120	149	273	342	145
	Meningococcal Disease	1	-	1	-	1	28	30	39	22	23
	Streptococcus pneumoniae, Inv	6	10	8	16	18	593	649	602	660	695
	Meningitis Subtotal	27	33	26	36	38	1,872	1,803	1,884	1,856	1,769
Other	Anthrax	-	-	-	-	-	-	-	-	-	1
	Blastomycosis	-	-	-	-	-	20	16	26	16	8
	Botulism - Infant	-	-	-	-	-	-	-	-	-	-
	Botulism - Other	-	-	-	-	-	-	-	-	1	-
	Brucellosis	-	1	-	-	-	3	5	1	10	4
	Cholera	-	-	-	-	-	-	1	-	1	-
	Coccidioidomycosis	2	-	3	1	-	46	26	40	26	23
	Creutzfeldt-Jakob Disease	-	-	1	-	-	7	14	16	15	11
	Cryptococcosis	-	-	2	1	-	50	49	69	56	50
	Cyclosporiasis	-	-	-	-	-	-	1	1	3	6
	Encephalitis, Post Chickenpox	-	-	-	-	-	3	1	1	1	-
	Encephalitis, Post Mumps	-	-	-	-	-	-	-	-	-	-
	Encephalitis, Post Other	1	-	-	-	-	19	16	10	12	11
	Encephalitis, Primary	-	-	-	1	-	32	31	25	10	20
	Guillain-Barre Syndrome	2	1	1	2	-	54	53	54	75	58
	Hantavirus	-	-	-	-	-	-	-	-	-	-
	Hantavirus, Other	-	-	-	-	-	-	-	-	-	-
	Hantavirus, Pulmonary	-	-	-	-	-	-	-	-	-	-
	Hemolytic Uremic Syndrome	-	-	-	-	-	5	6	6	8	13
	Hemorrhagic Fever	-	-	-	-	-	-	-	-	-	-
Hepatitis - Unspecified	-	-	-	-	-	1	1	3	1	3	
Histoplasmosis	7	10	-	6	7	116	126	93	62	89	
Other	Kawasaki	2	1	1	1	2	98	70	74	73	77

	Legionellosis	1	2	1	3	2	174	189	181	180	200
	Leprosy	-	-	-	-	-	-	2	-	1	-
	Leptospirosis	-	-	-	-	-	1	3	1	-	-
	Plague	-	-	-	-	-	-	-	-	-	-
	Psittacosis	-	-	-	-	-	-	2	-	-	1
	Q Fever*	-	-	-	-	-	-	-	2	1	3
	Q Fever Acute	-	-	-	-	-	-	-	-	-	3
	Q Fever Chronic	-	-	-	-	-	3	2	-	-	-
	Rabies Human	-	-	-	-	-	-	-	-	1	-
	Reye Syndrome	-	-	-	-	-	1	-	-	-	-
	Rheumatic Fever	-	-	-	-	-	1	2	4	2	5
	Rubella - Congenital	-	-	-	-	-	-	-	-	-	-
	Streptococcus pneumoniae, Drug Resistant	-	-	-	-	-	17	4	23	26	51
	Streptococcal Dis, Inv, Grp A	2	4	2	1	3	199	209	192	160	180
	Streptococcal Toxic Shock	-	-	-	-	1	2	2	1	-	2
	Toxic Shock	-	-	-	2	-	7	8	10	7	10
	Trachoma	-	-	-	-	-	4	3	2	1	3
	Trichinosis	-	-	-	-	-	-	-	-	1	-
	Tularemia	-	-	-	-	-	-	-	-	-	-
	Vibriosis - Non Cholera	-	-	-	-	-	-	-	3	2	9
	VISA	-	-	-	-	-	1	2	6	5	4
	VRSA	-	-	-	-	-	1	2	-	1	-
	Other Subtotal	27	20	17	29	15	1,195	965	2,222	13,827	44,768
STD	Chancroid	-	-	-	-	-	1	-	-	-	-
	Chlamydia (Genital)	510	479	563	501	494	38,862	38,762	42,509	46,591	47,926
	Gonorrhea	66	58	101	55	79	16,767	15,784	16,118	14,573	13,199
	Granuloma Inguinale	-	-	-	-	-	-	-	-	1	-
	Lymphogranuloma venereum	-	-	-	-	-	-	-	-	-	1
	Syphilis - Congenital	-	-	-	-	-	9	12	8	10	2
	Syphilis - Early Latent	-	-	-	1	1	44	75	96	156	121
	Syphilis - Late Latent	-	-	1	-	-	105	122	73	87	148
	Syphilis - Late with Manifestations	-	-	1	-	1	6	8	9	20	12
	Syphilis - Latent of Unknown Duration	1	-	2	1	1	107	138	129	138	165
	Syphilis - Primary	-	-	-	-	-	41	39	62	65	55
	Syphilis - Secondary	1	1	1	-	3	87	87	135	166	179
	STD Subtotal	578	538	669	558	579	56,029	55,027	59,139	61,807	61,808
Tuberculosis	Tuberculosis	6	3	5	2	6	175	183	191	148	180
	Mycobacterium - Other	-	-	-	-	2	-	-	15	-	100
	Tuberculosis Subtotal	6	3	5	2	8	175	183	206	148	280
VPD	Chickenpox (Varicella)	299	187	114	60	44	5,239	4,138	2,843	1,887	1,440
	Diphtheria	-	-	-	-	-	-	-	-	-	-
	H. influenzae Disease - Inv.	2	-	1	-	-	32	30	30	25	36
	Measles	-	-	-	-	-	1	3	4	-	-
	Mumps	-	-	-	-	-	85	29	39	21	48
	Pertussis	5	5	5	31	45	628	274	347	900	1,569
	Polio	-	-	-	-	-	-	-	-	-	-
	Rubella	-	-	-	-	-	1	3	-	-	-
	Shingles	-	-	-	-	1	71	90	102	140	192
	Tetanus	-	-	-	-	-	3	-	1	-	2
	VZ Infection, Unspecified	-	-	-	-	1	-	-	-	65	118
	VPD Subtotal	306	192	120	91	91	6,060	4,567	3,366	3,038	3,405
Vectorborne	Dengue Fever	1	2	-	-	-	9	13	11	6	9

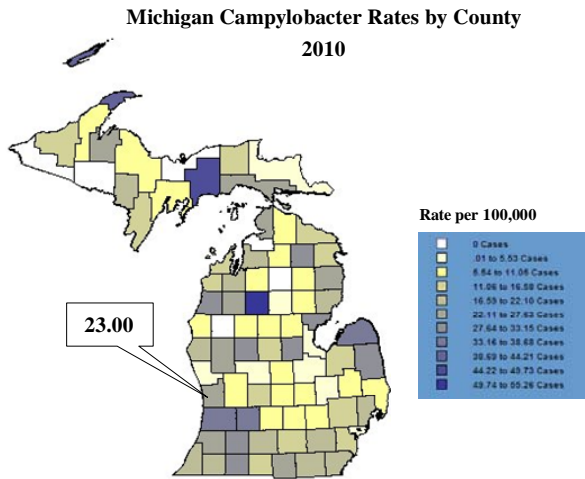
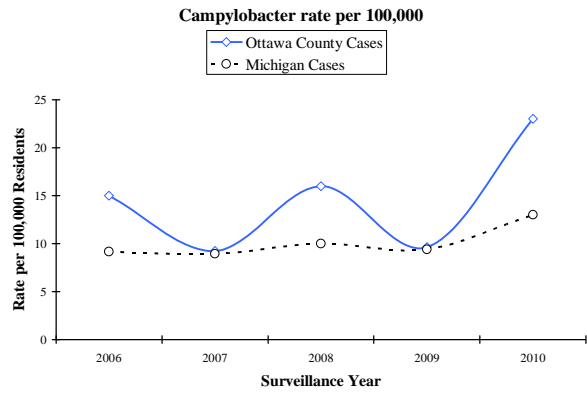
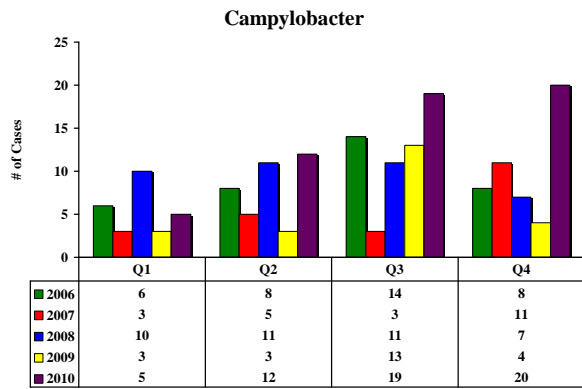
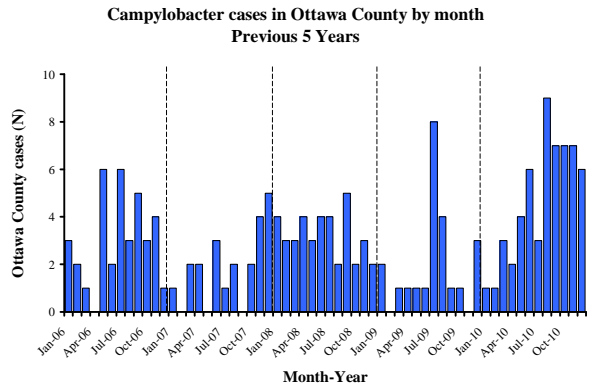
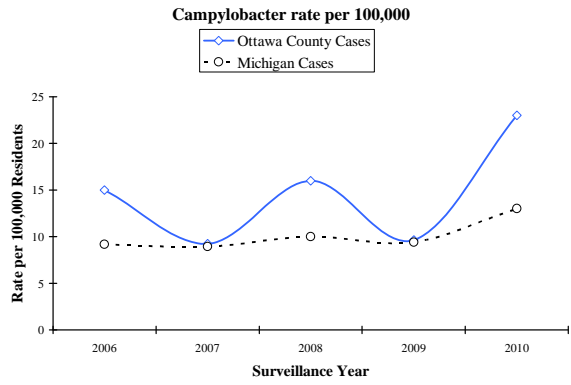
	Ehrlichiosis*	-	-	-	-	-	-	-	-	-	-	-
	Ehrlichiosis, Anaplasma phagocytophilum	-	-	-	-	-	-	-	-	-	-	6
	Ehrlichiosis, Ehrlichia chaffeensis	-	-	-	-	-	-	-	-	6	-	2
	Ehrlichiosis, Ehrlichia ewingii	-	-	-	-	-	-	-	-	-	-	-
	Ehrlichiosis, human granulocytic*	-	-	-	-	-	1	-	-	-	-	-
	Ehrlichiosis, human monocytic*	-	-	-	-	-	2	-	3	-	-	-
	Ehrlichiosis, human other/undetermined	-	-	-	-	-	-	-	-	-	-	-
	Ehrlichiosis human, other, unsp*	-	-	-	-	-	-	-	-	-	-	-
	Encephalitis, California	-	-	-	-	-	1	1	-	-	-	2
	Encephalitis, Eastern Equine	-	-	-	-	-	-	-	-	-	-	3
	Encephalitis, Powassan	-	-	-	-	-	-	-	-	-	-	-
	Encephalitis, St. Louis	-	-	-	-	-	-	-	1	-	-	2
	Encephalitis, Western Equine	-	-	-	-	-	-	-	-	-	-	-
	Lyme Disease	4	3	2	6	3	56	68	92	103	94	
	Malaria	-	-	-	-	-	22	23	17	32	34	
	Rickettsial Disease - Spotted Fever	-	1	-	-	-	7	3	3	5	2	
	Rickettsial Disease - Typhus	-	-	-	-	-	-	-	-	-	-	1
	West Nile Virus	2	-	-	-	1	65	20	20	1	29	
	Yellow Fever	-	-	-	-	-	-	-	-	-	-	-
	Vectorborne Subtotal	7	6	2	6	4	163	128	147	153	184	
Viral Hepatitis	Hepatitis A	-	4	2	1	3	136	118	133	91	87	
	Hepatitis B, Acute	1	5	3	-	1	169	135	169	171	151	
	Hepatitis B, Chronic	37	17	25	38	29	1,901	1,816	1,984	1,902	1,628	
	Hepatitis B, Perinatal	1	-	-	-	-	3	2	2	-	1	
	Hepatitis C, Acute	1	4	2	-	1	297	150	171	34	86	
	Hepatitis C, Chronic	86	85	80	82	60	8,150	6,641	8,429	7,700	7,125	
	Hepatitis C, Unknown*	-	1	2	-	-	2	17	229	-	13	
	Hepatitis D	-	-	-	-	-	4	1	1	-	4	
	Hepatitis E	-	-	-	1	-	1	-	10	8	7	
	Hepatitis Non A Non B	-	-	-	-	-	-	-	-	-	-	-
	Viral Hepatitis Subtotal	126	116	114	122	94	10,663	8,880	11,128	9,906	9,102	
Total						469,597	479,287	499,139	816,573	510,610		

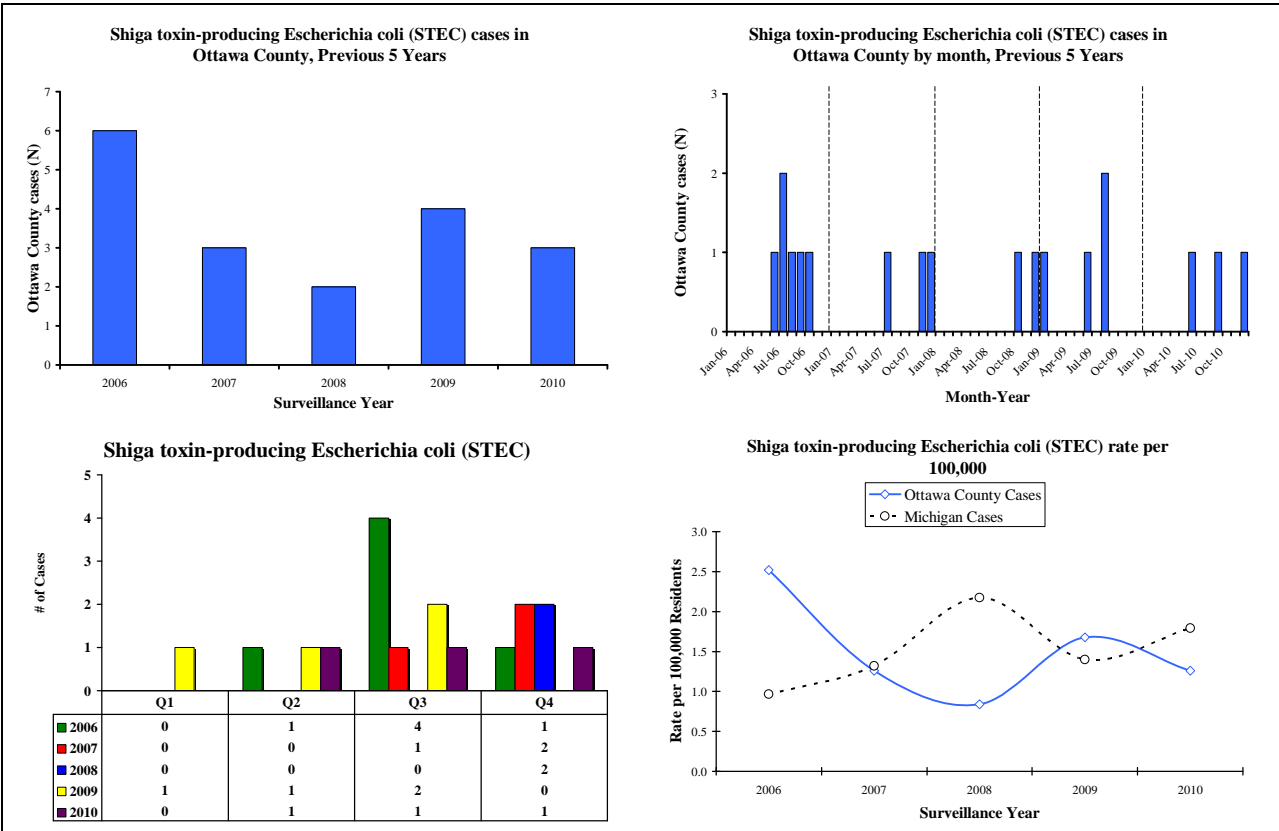
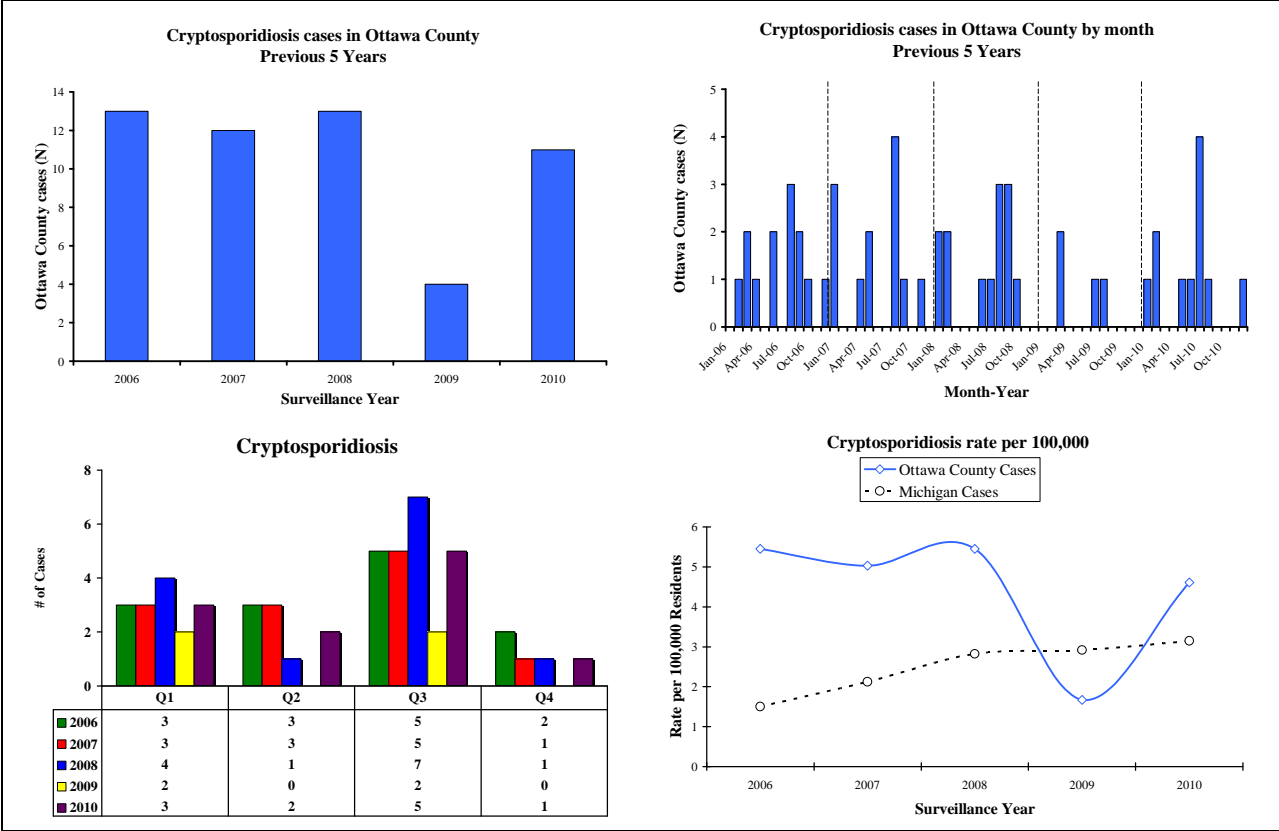
* Indicates disease no longer reported into the MDSS on an individual cases basis.

** Data for cases is based on year case was referred to the health department

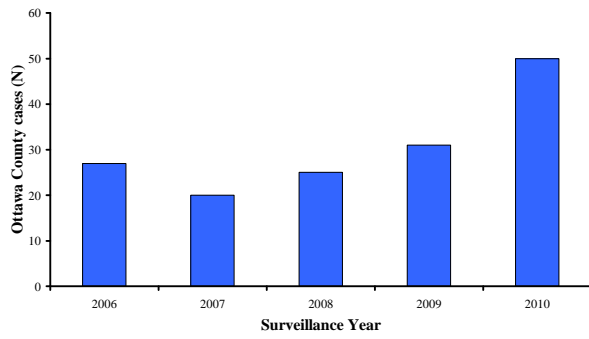
'-' Indicates no cases were reported

Foodborne Illness:

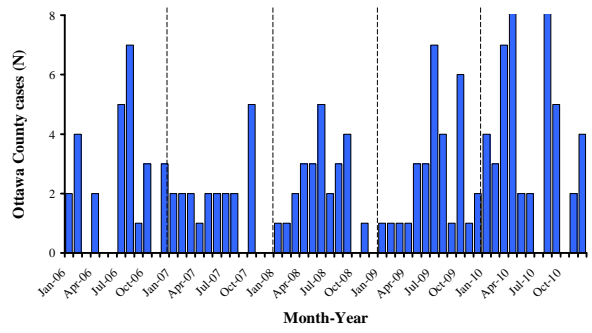




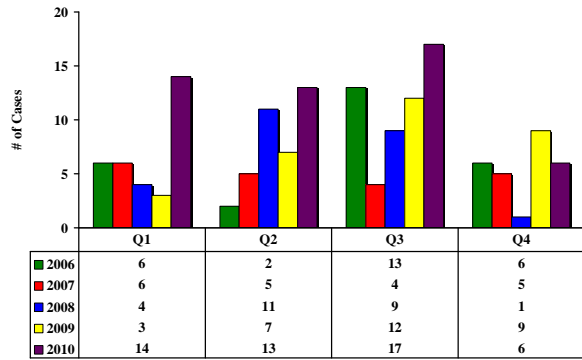
**Giardiasis cases in Ottawa County
Previous 5 Years**



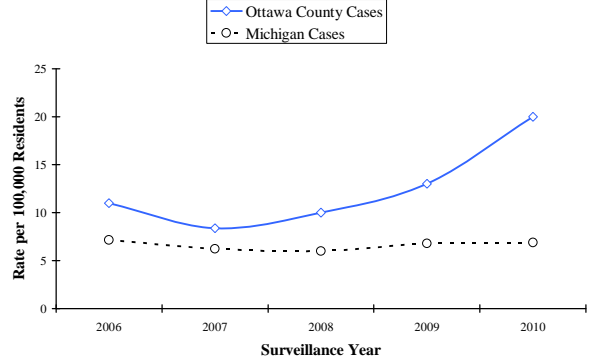
**Giardiasis cases in Ottawa County by month
Previous 5 Years**



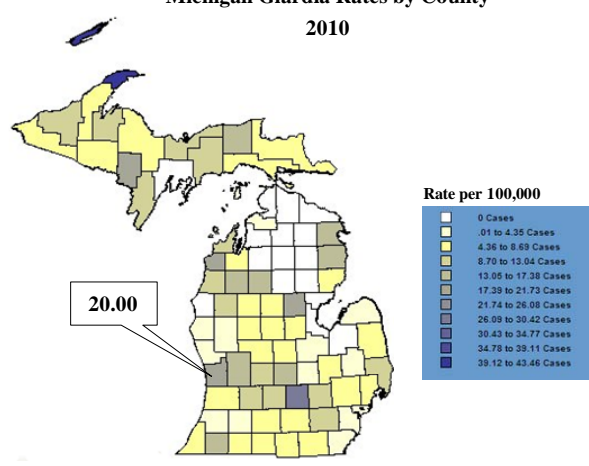
Giardiasis

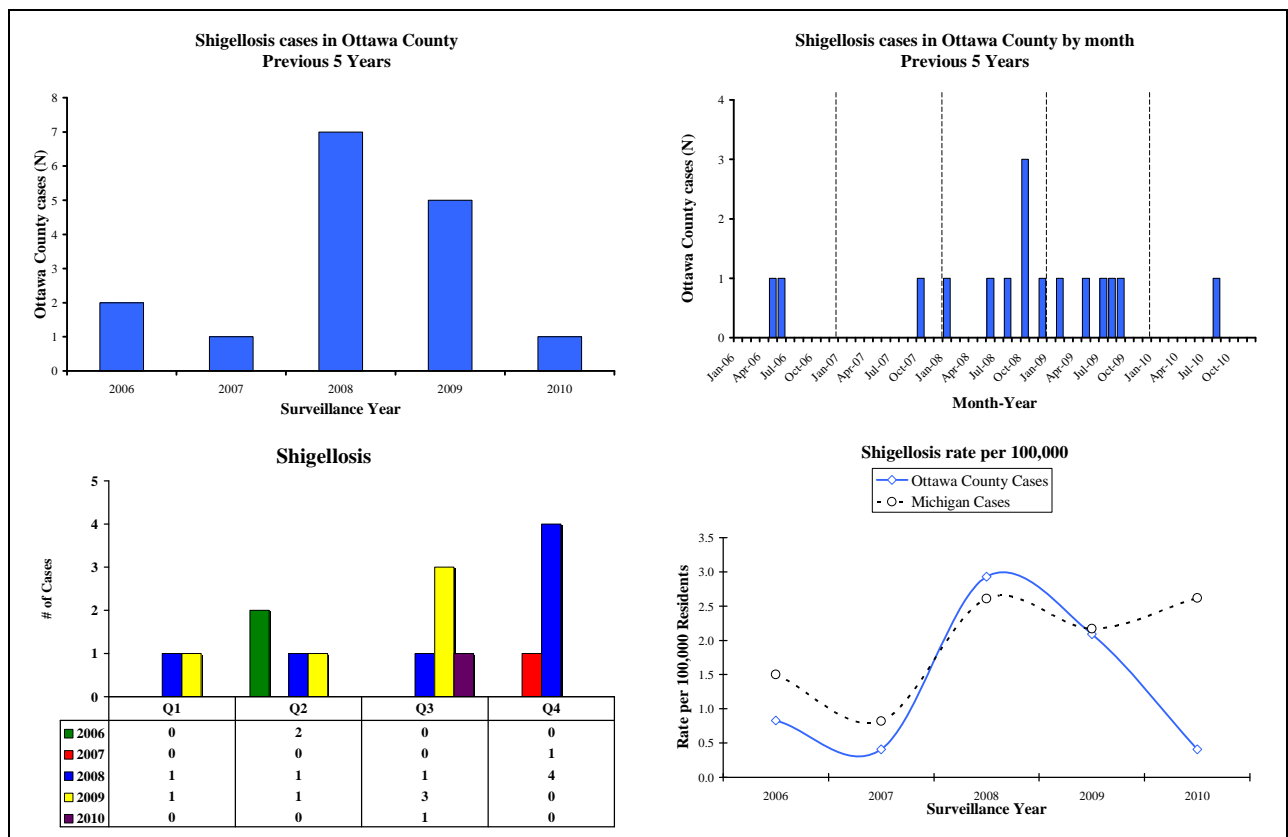
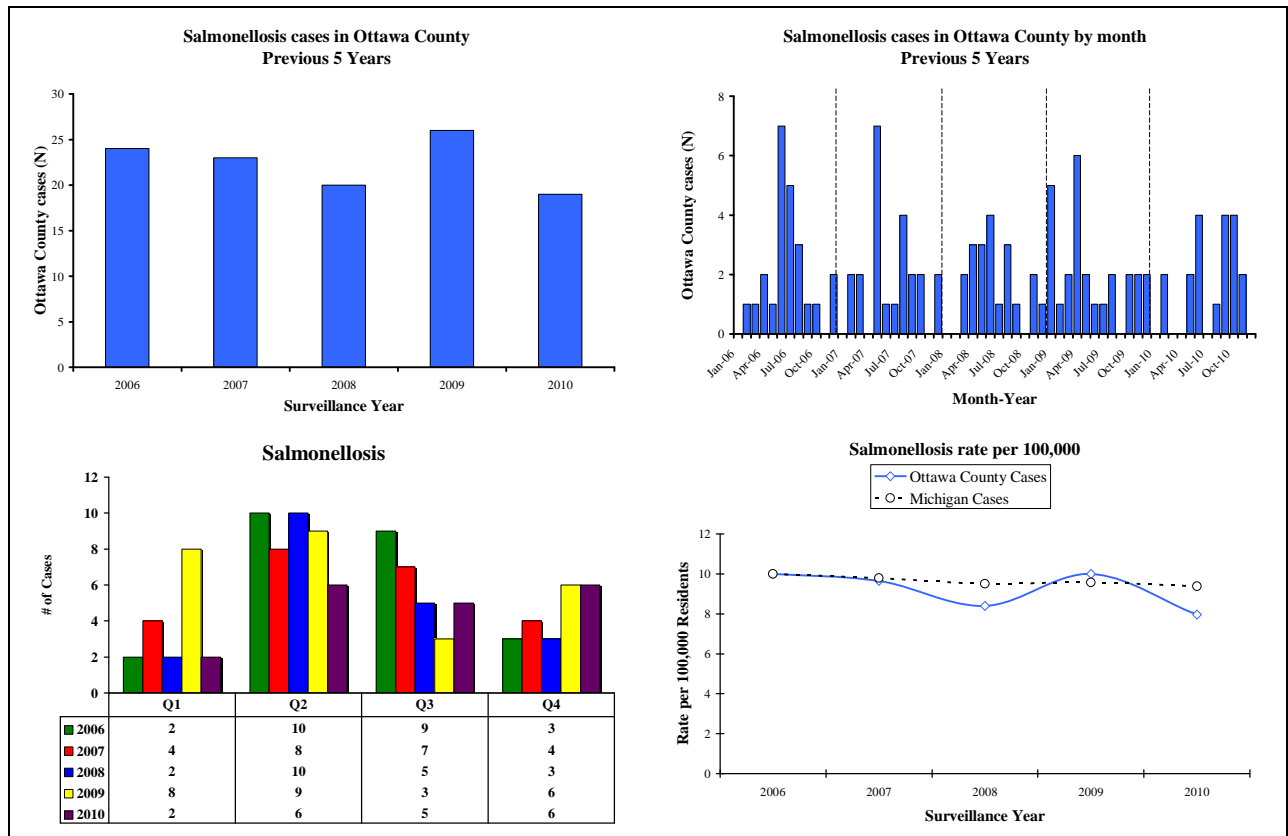


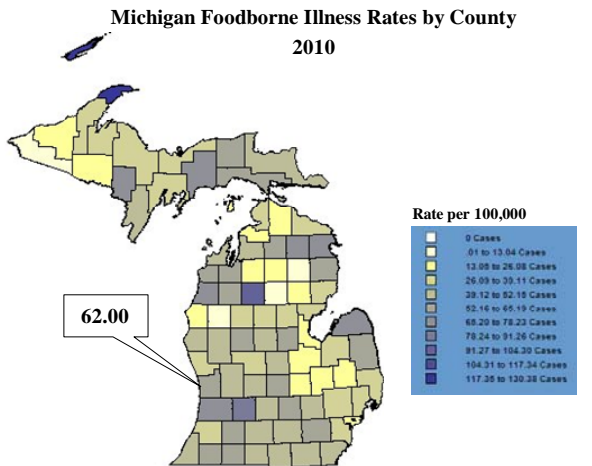
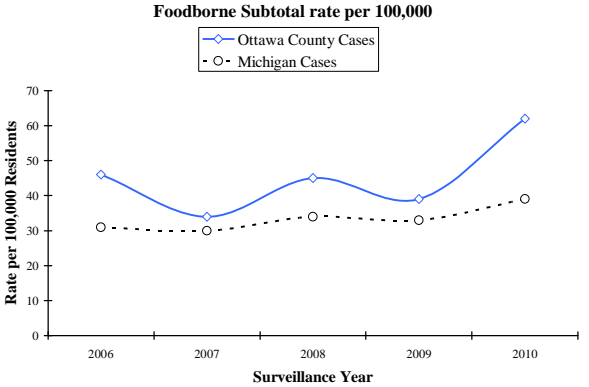
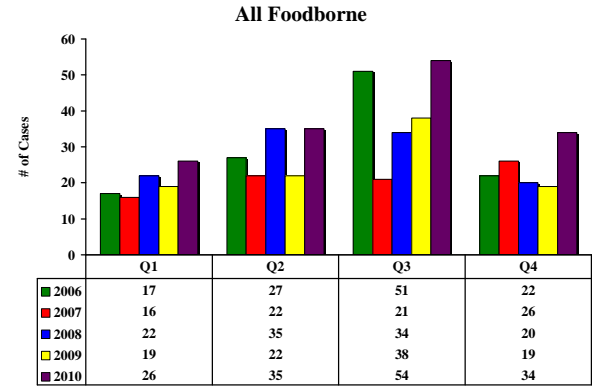
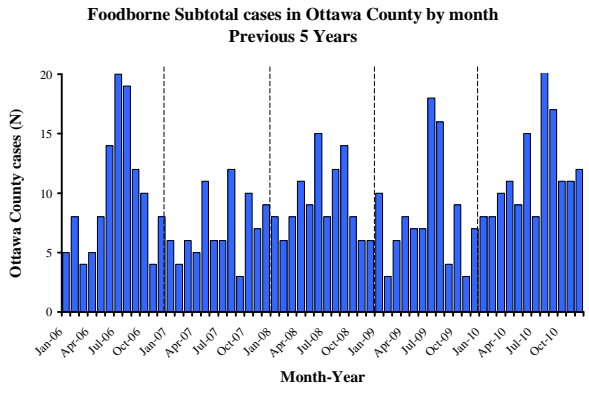
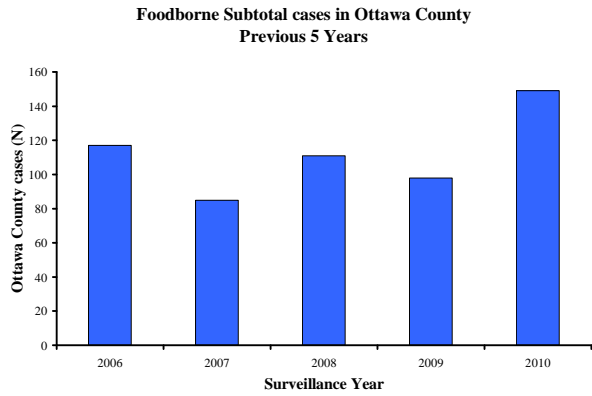
Giardiasis rate per 100,000



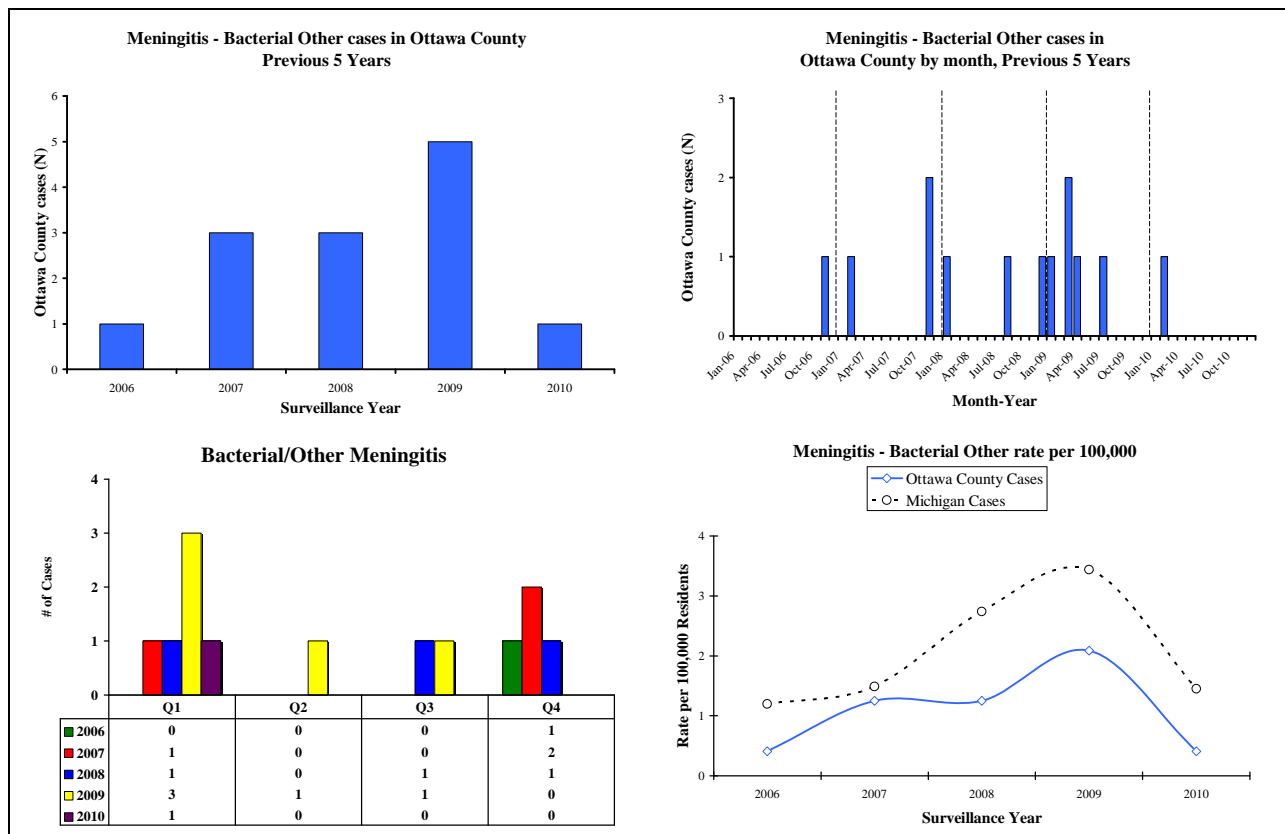
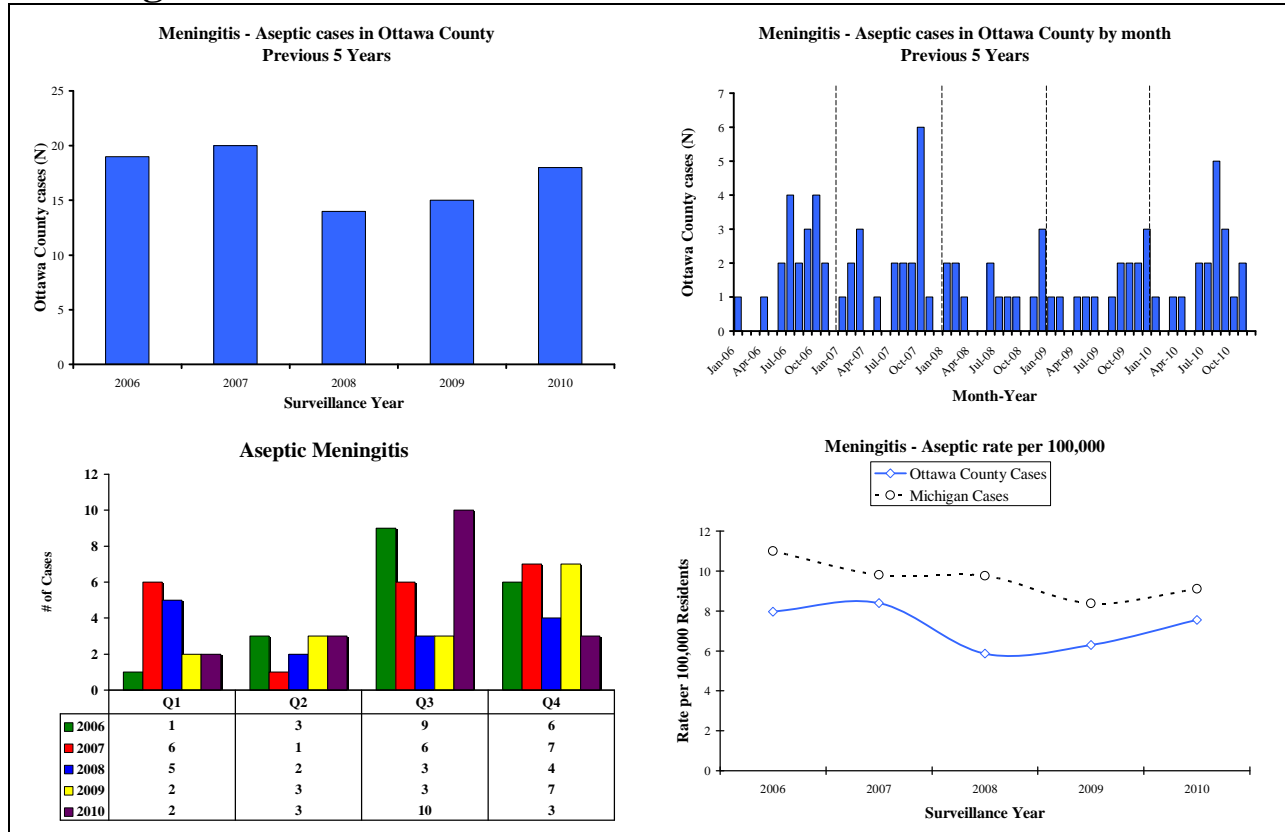
**Michigan Giardia Rates by County
2010**

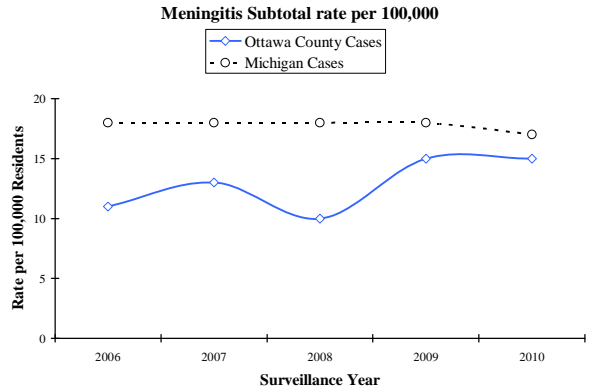
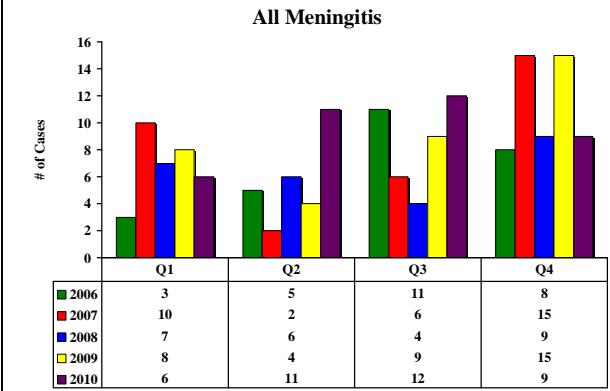
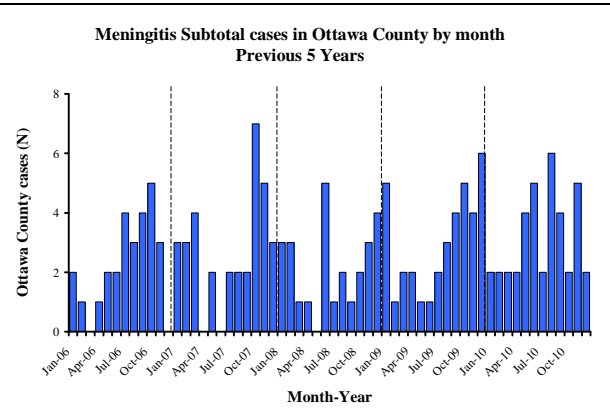
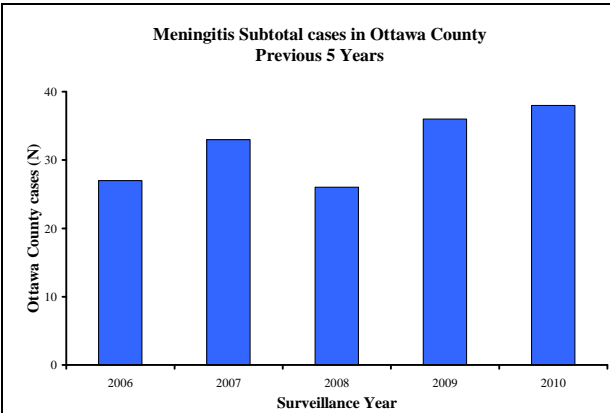
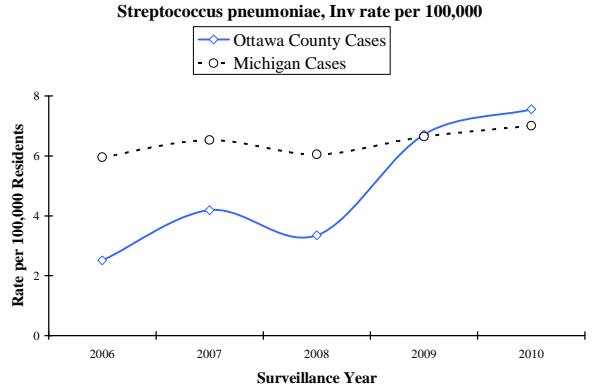
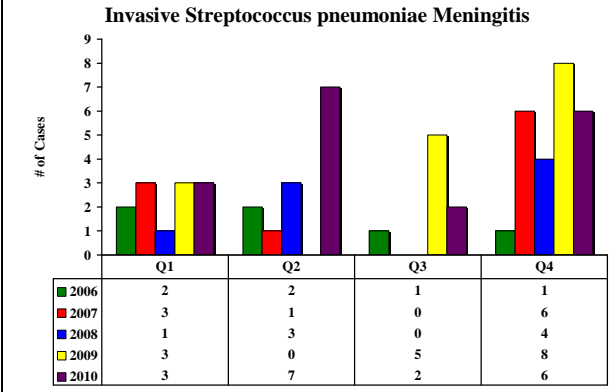
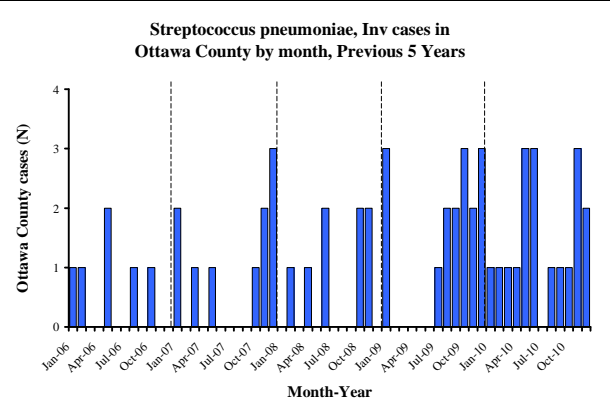
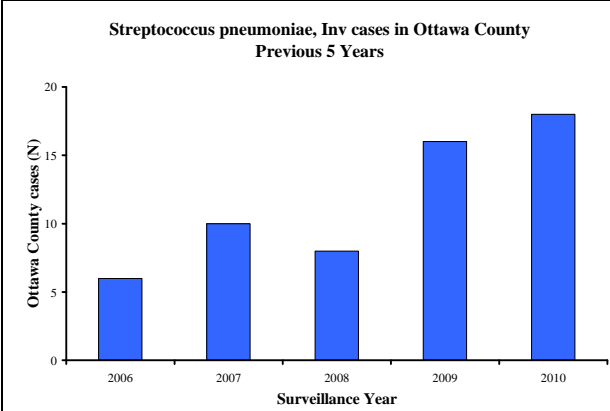




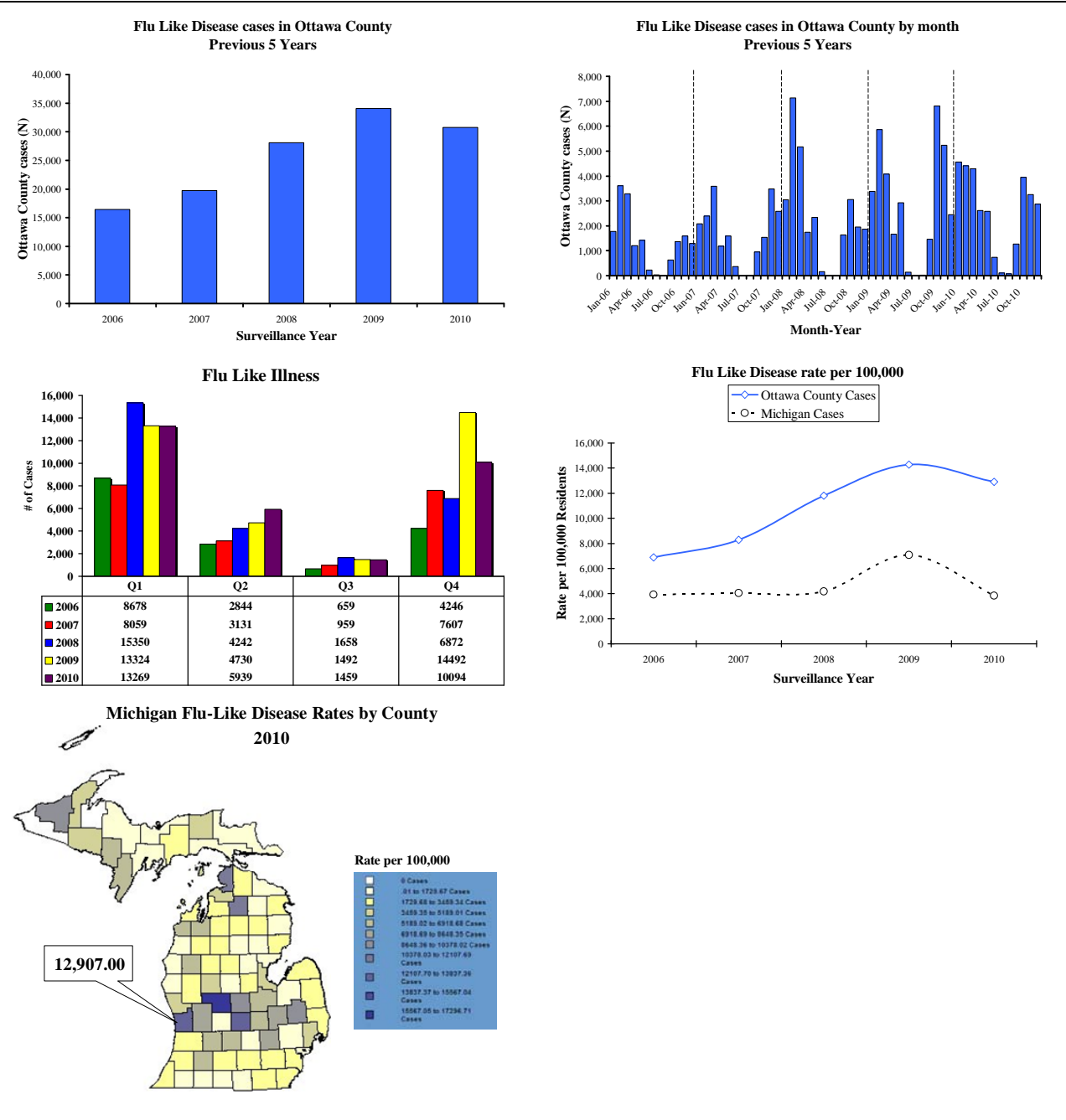


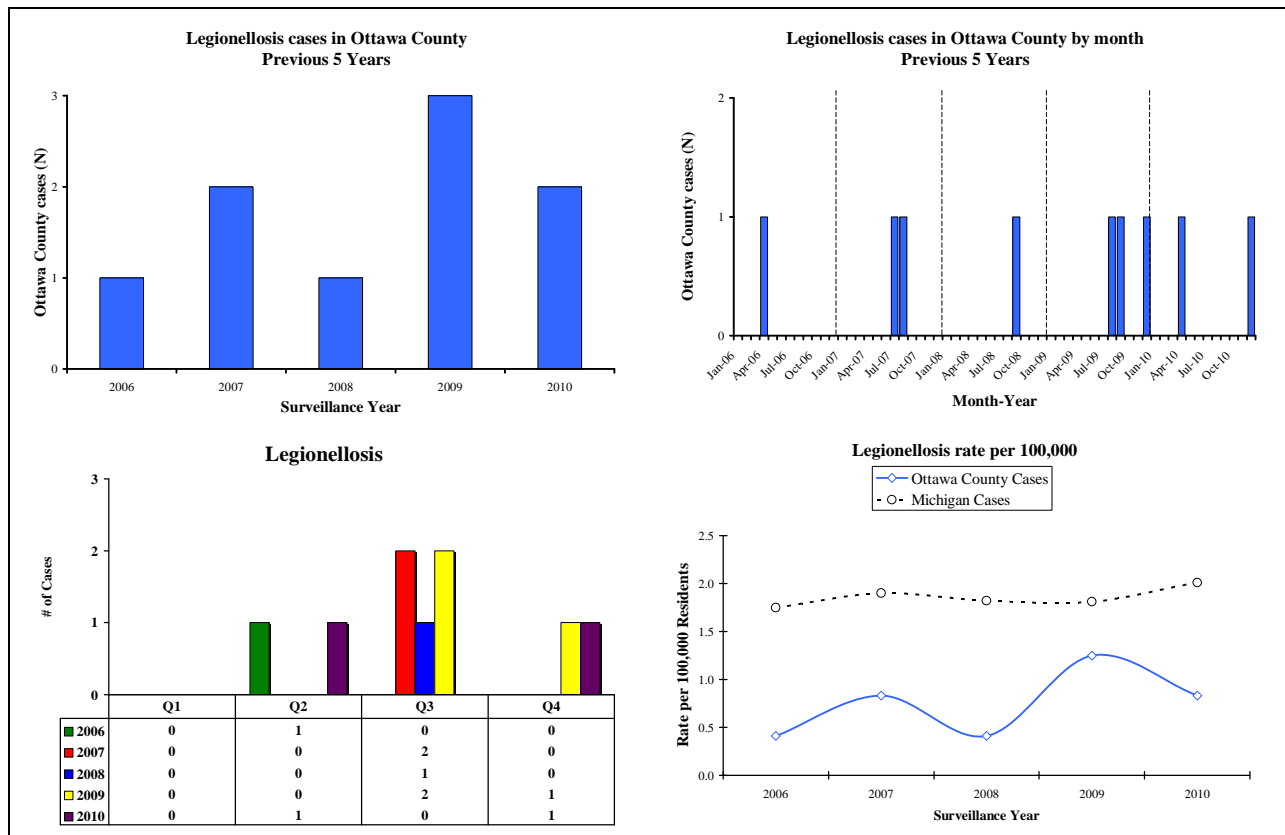
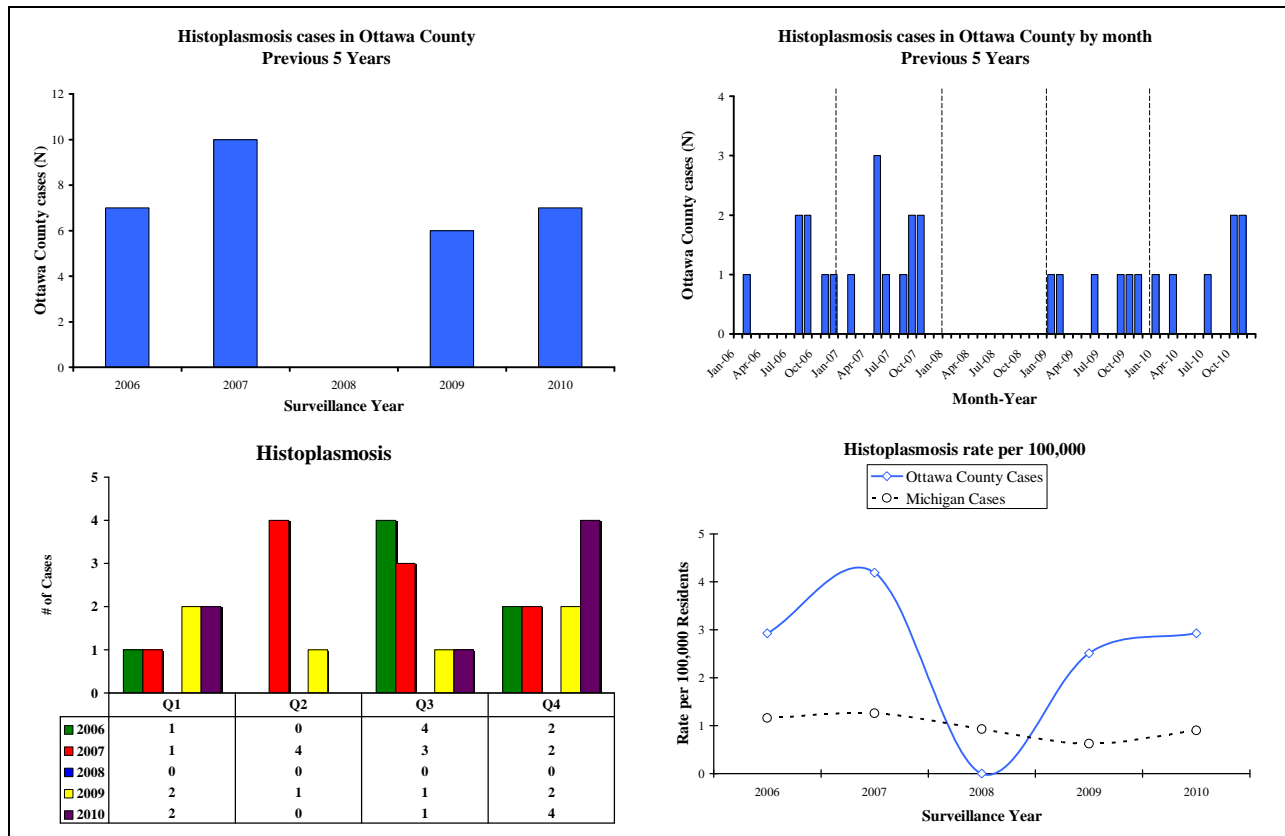
Meningitis:



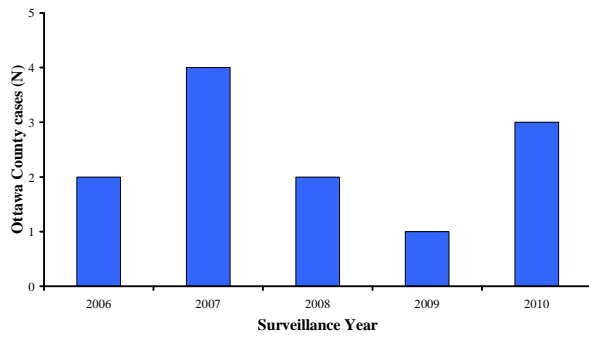


Other:

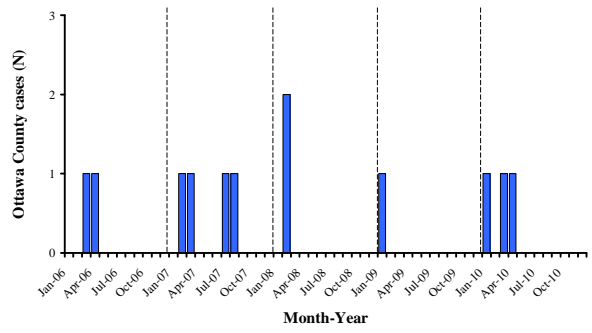




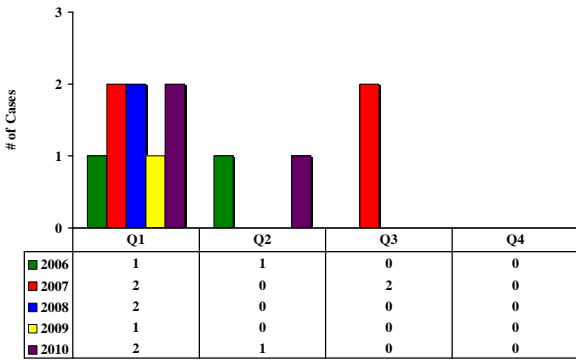
**Streptococcal Dis, Inv, Grp A cases in Ottawa County
Previous 5 Years**



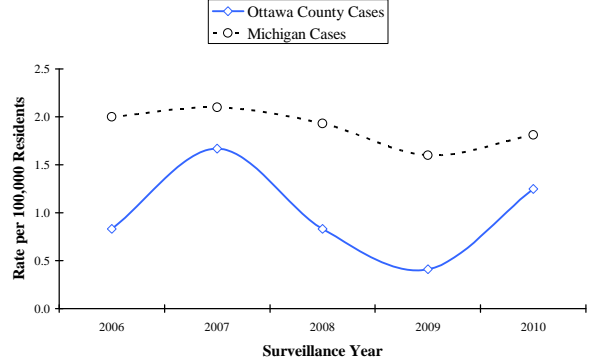
**Streptococcal Dis, Inv, Grp A cases in Ottawa County
by month, Previous 5 Years**



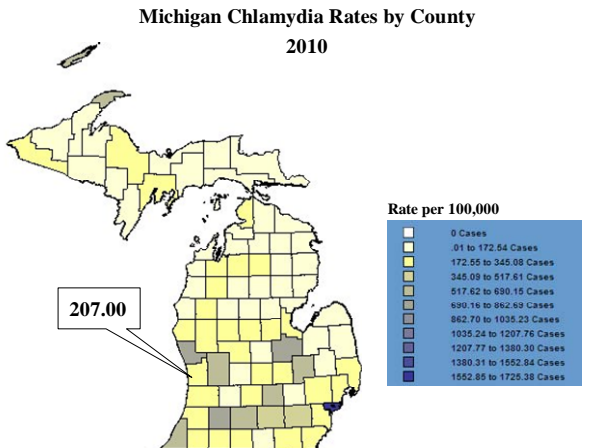
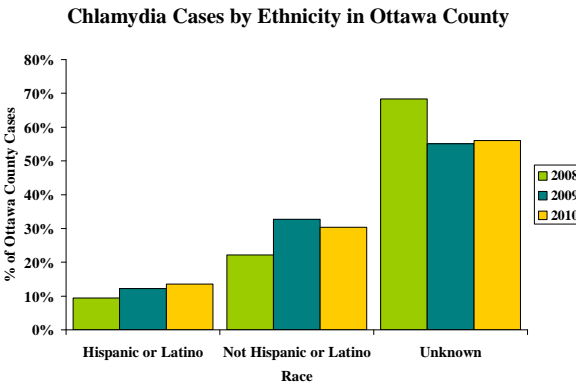
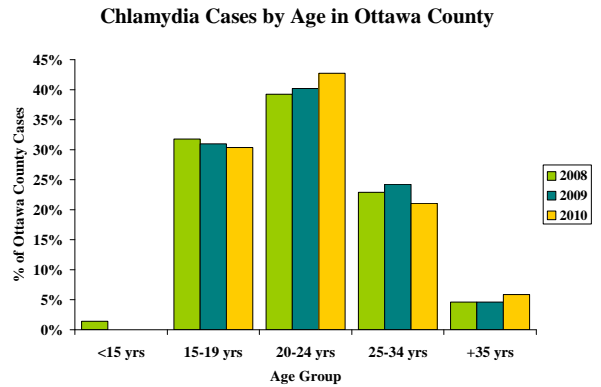
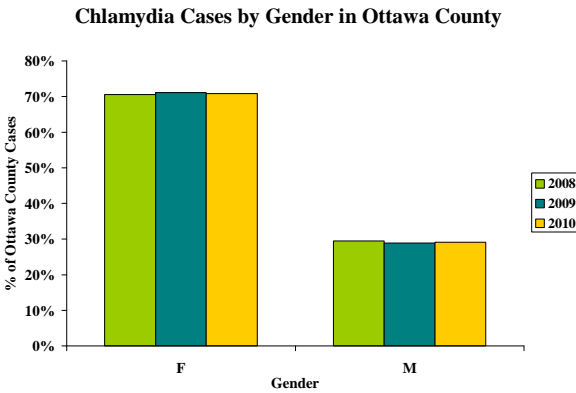
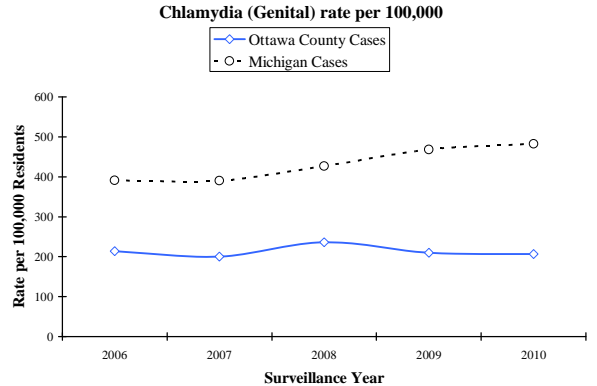
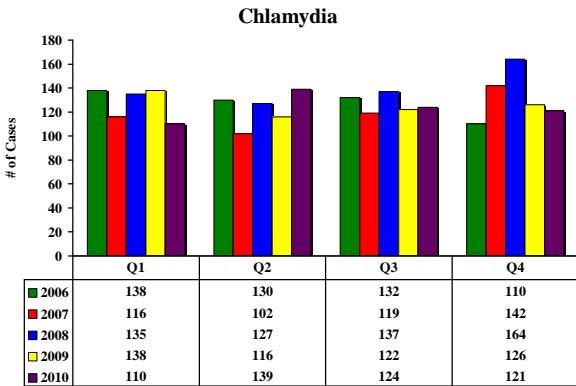
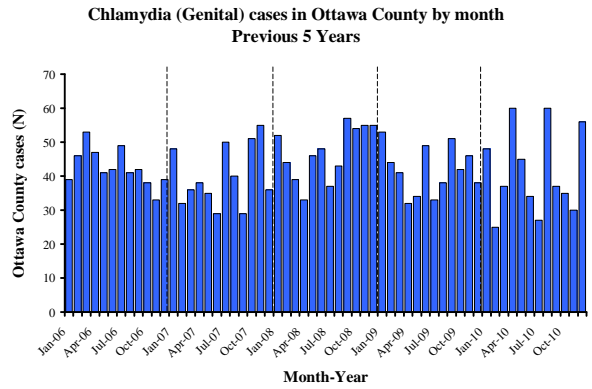
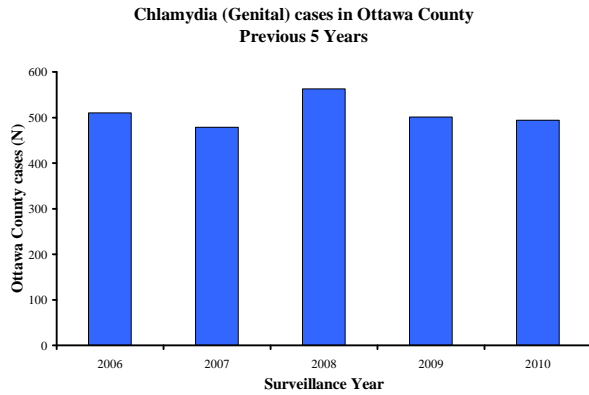
Streptococcus Disease, Invasive, Group A



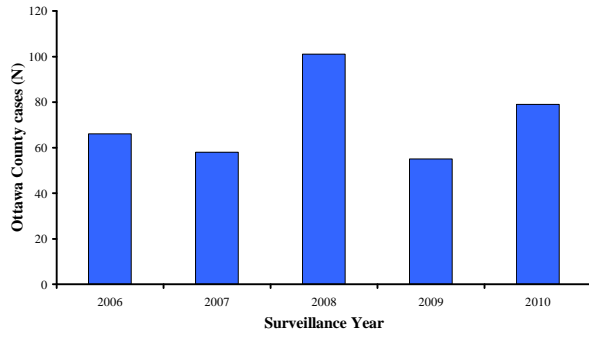
Streptococcal Dis, Inv, Grp A rate per 100,000



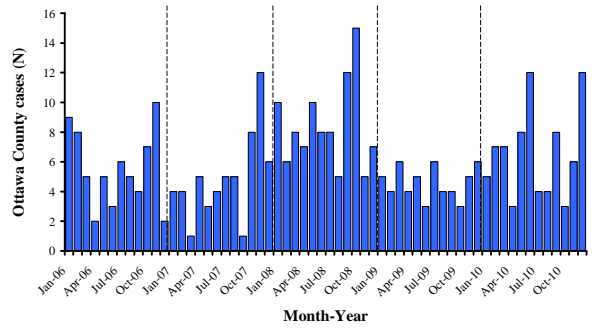
Sexually Transmitted Diseases:



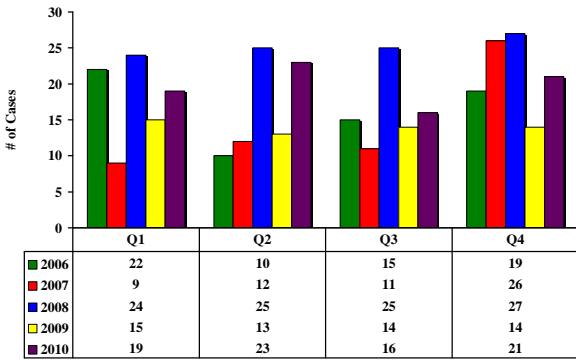
**Gonorrhea cases in Ottawa County
Previous 5 Years**



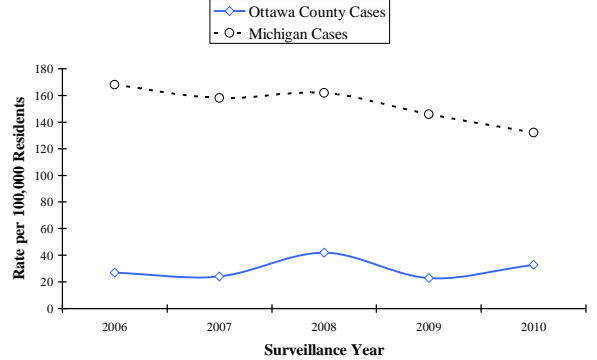
**Gonorrhea cases in Ottawa County by month
Previous 5 Years**



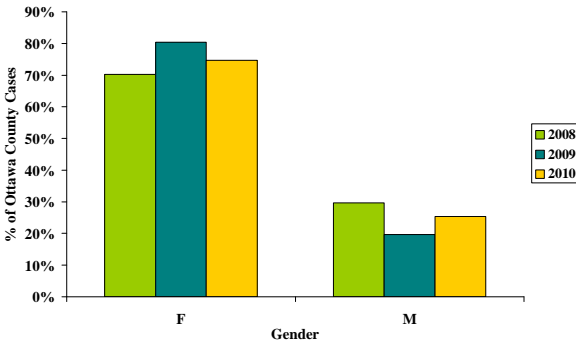
Gonorrhea



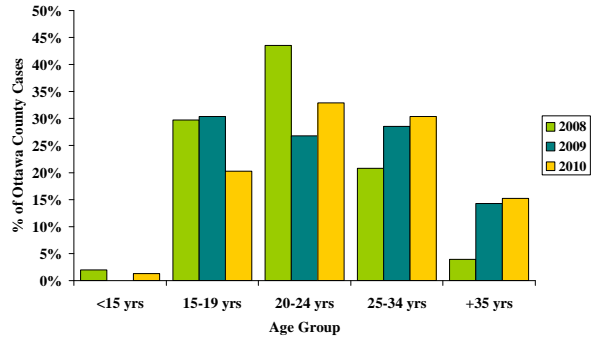
Gonorrhea rate per 100,000



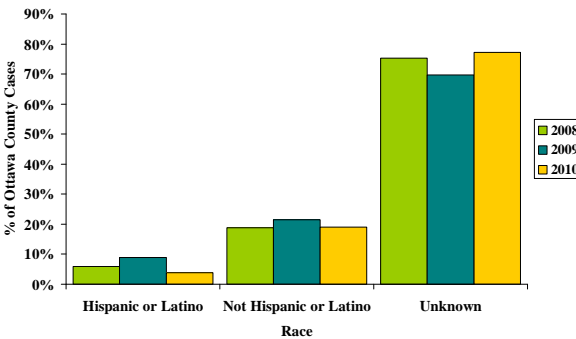
Gonorrhea Cases by Gender in Ottawa County



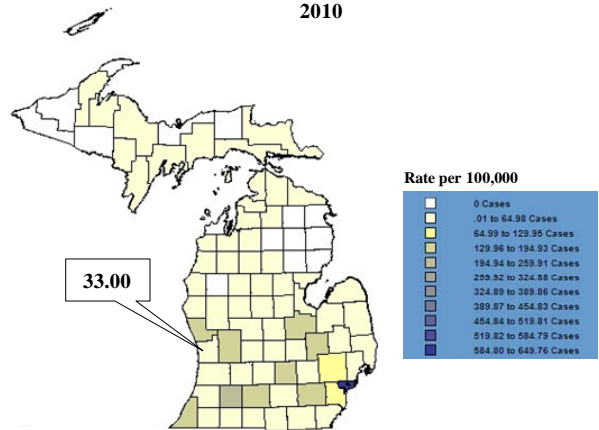
Gonorrhea Cases by Age in Ottawa County



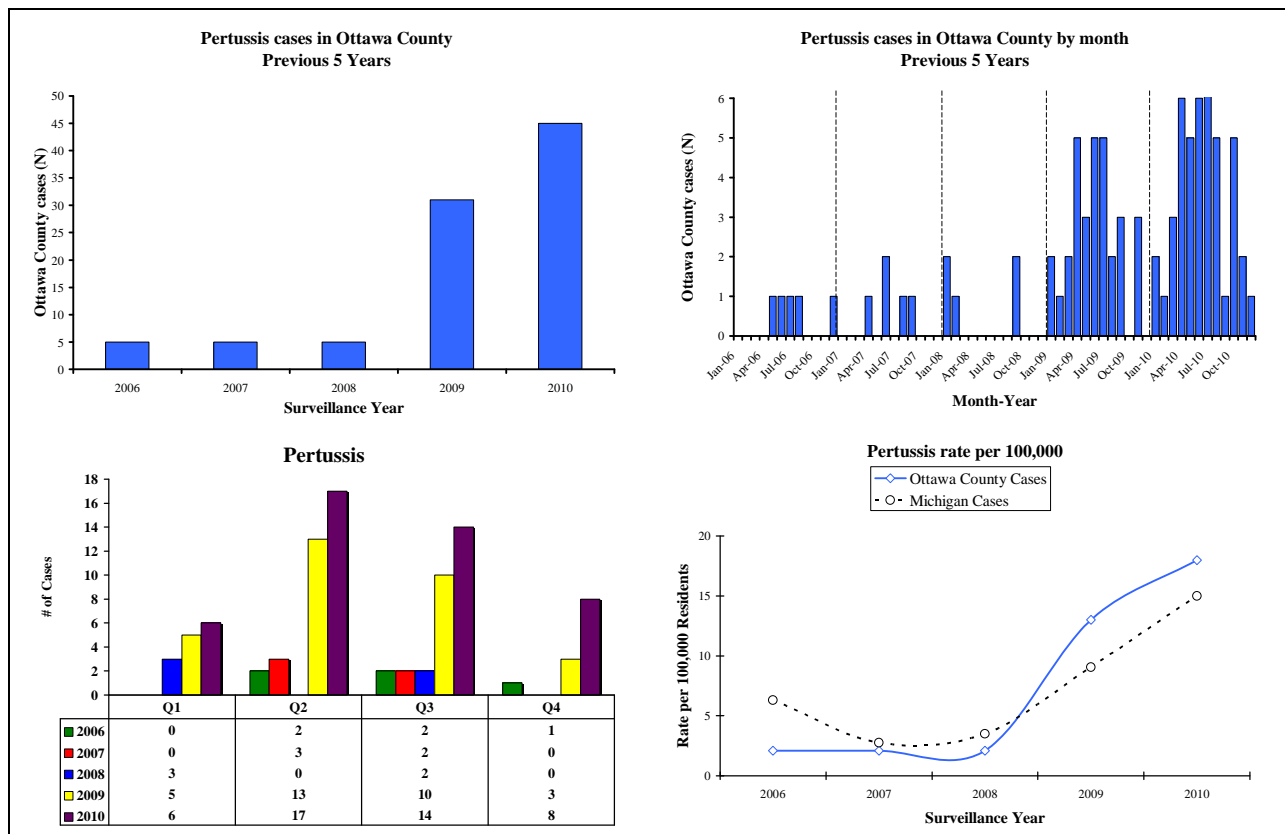
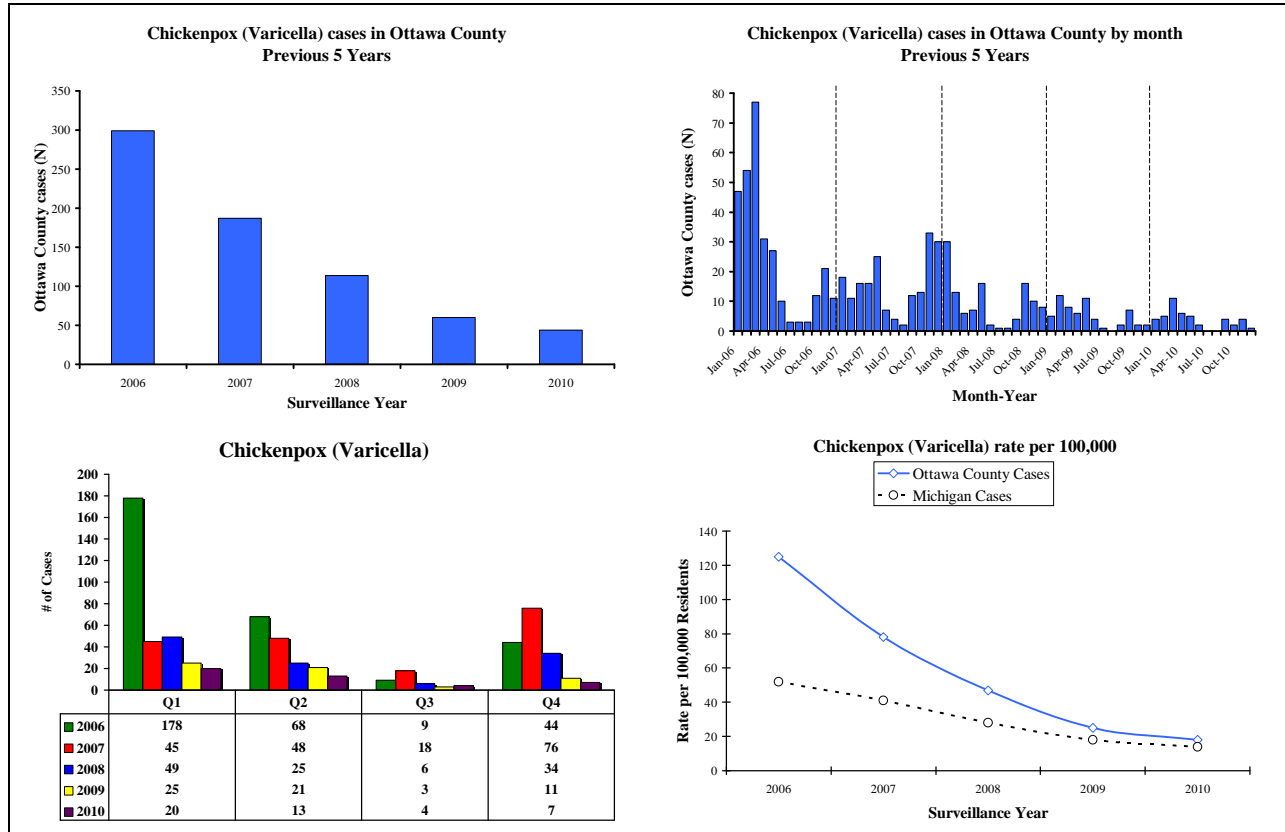
Gonorrhea Cases by Ethnicity in Ottawa County



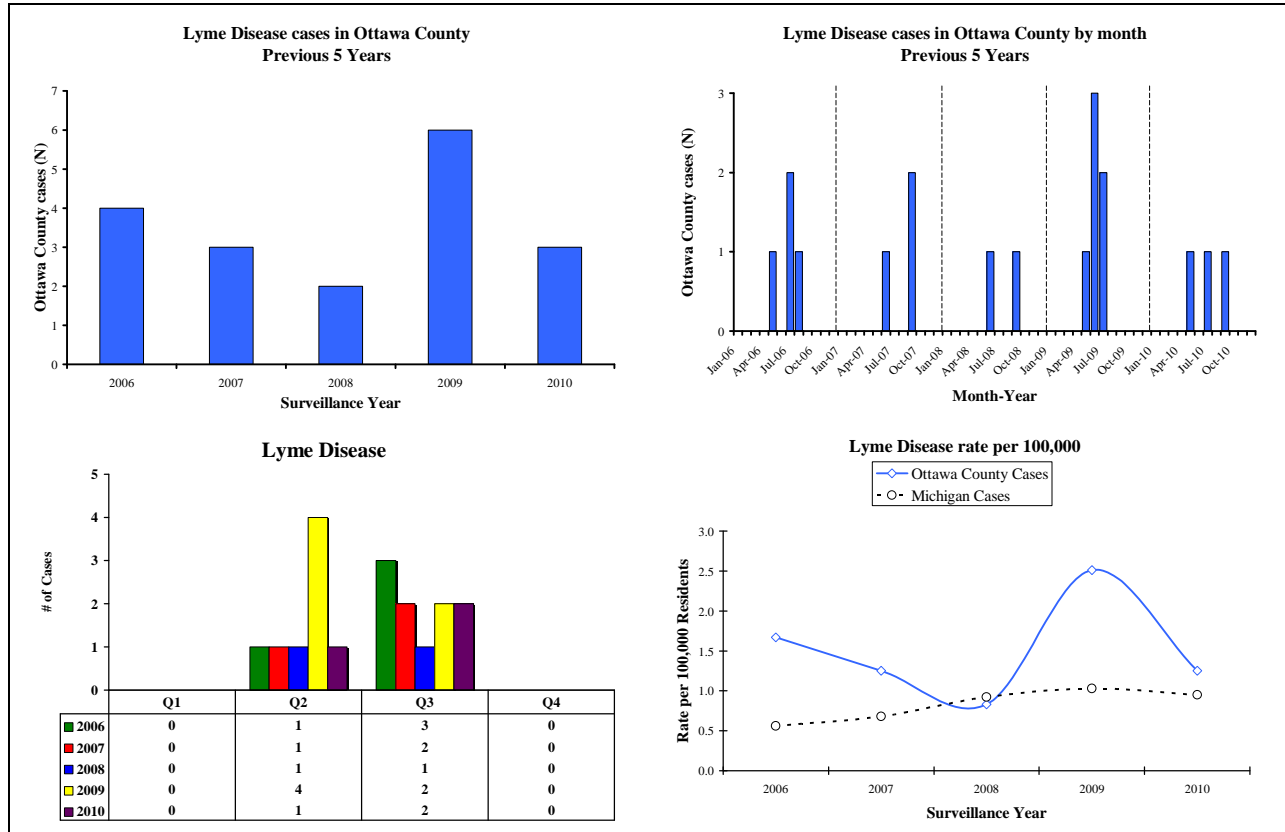
**Michigan Gonorrhea Rates by County
2010**



Vaccine Preventable Disease:



Vectorborne Disease:



Viral Hepatitis

