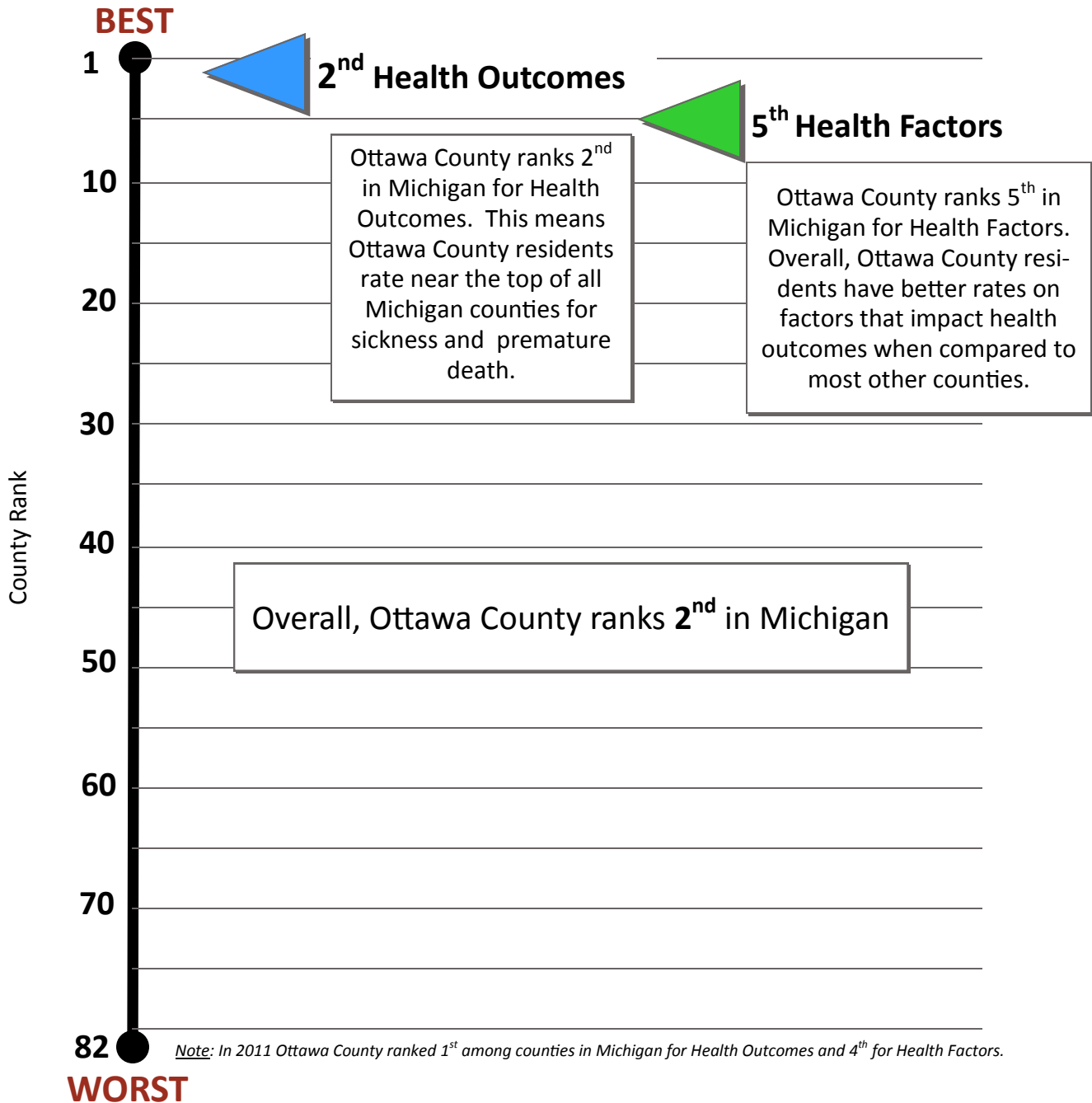




2012 County Health Rankings Report OTTAWA COUNTY



Note: In 2011 Ottawa County ranked 1st among counties in Michigan for Health Outcomes and 4th for Health Factors.

Note: Counties in Michigan were ranked from 1 (best) to 82 (worst), as Keweenaw County was not ranked.

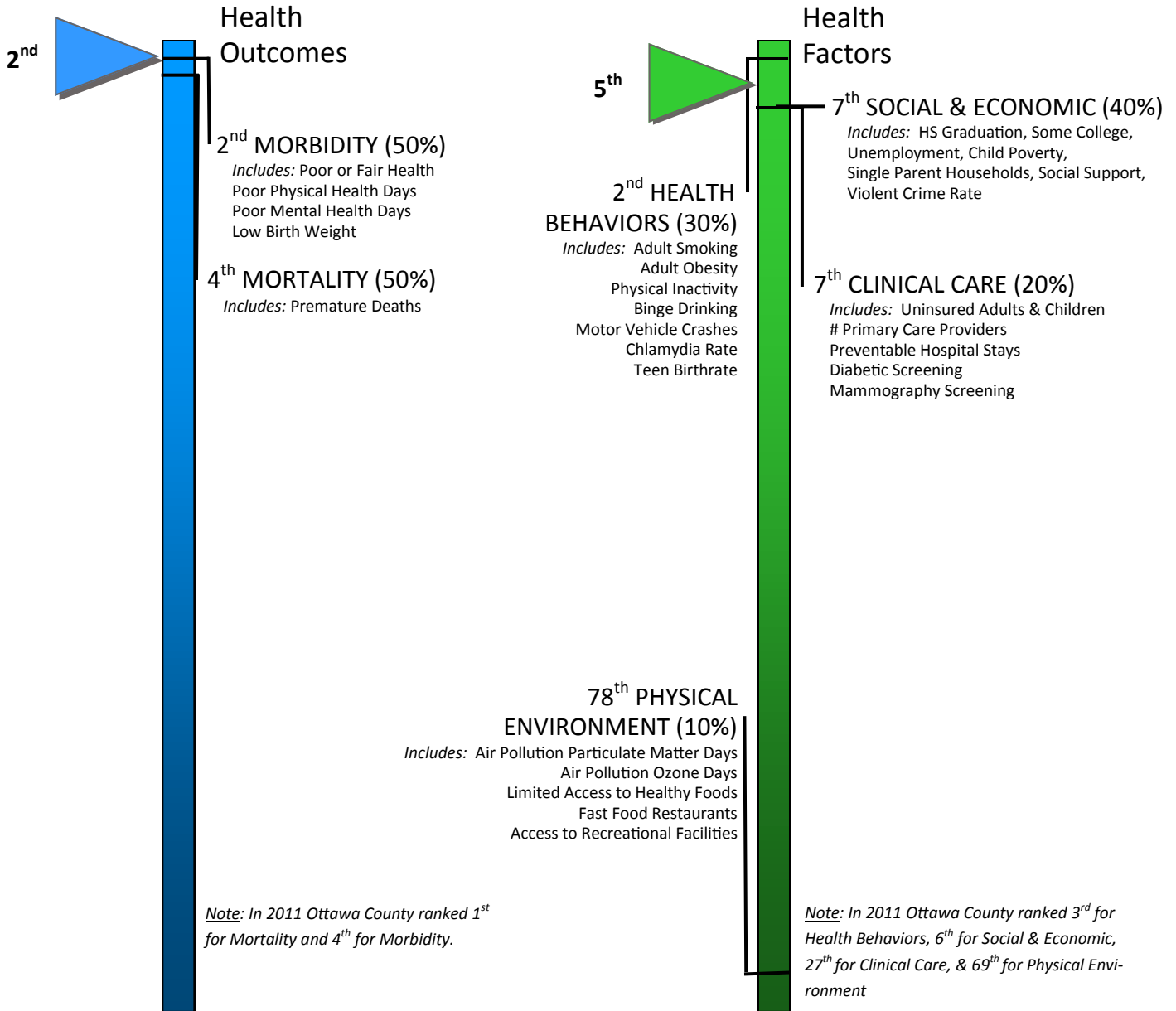


County Health Rankings
Mobilizing Action Toward Community Health
www.countyhealthrankings.com

County Health Rankings is a program of the Robert Wood Johnson Foundation and the University of Wisconsin Population Health Institute.

Detailed Rankings OTTAWA COUNTY

Each of the health ranking main categories is comprised of two or more sub-rankings which are themselves composed of a combination of different indicators. Please see www.countyhealthrankings for an interactive and detailed presentation of the data.



Ottawa County ranks 2nd in Michigan for Health Outcomes. Our sub-ranking is higher for sickness than for premature deaths.

Ottawa County ranks 5th in Michigan for Health Factors. The sub-rankings address a variety of health factors that influence health outcomes. The sub-groups comprise differing proportions of the final rank; health behaviors (30%) have a greater influence than the physical environment (10%), for example.

2012 Ottawa SNAPSHOT

| | | Ottawa County | Target Value * | Michigan | Rank (of 82) |
|---------------------------------------|-----------|---------------|----------------|----------|--------------|
| Health Outcomes | | | | | 2 |
| Mortality | | | | | 4 ↓ |
| Premature death ** | (50%) | 4,678 | 5,466 | 7,273 | |
| Morbidity | | | | | 2 ↑ |
| Poor or Fair health | (10%) | 9% | ≤ 10% | 14% | |
| Poor physical health days | (10%) | 2.5 | ≤ 2.6 | 3.5 | |
| Poor mental health days | (10%) | 2.6 | ≤ 2.3 | 3.7 | |
| Low birth weight | (20%) | 6.3% | ≤ 6.0% | 8.3% | |
| Health Factors | | | | | 5 |
| Health Behaviors | | | | | 2 ↑ |
| Adult smoking | (10%) | 16% | ≤ 14% | 21% | |
| Adult obesity | (7.5%) | 25% | ≤ 25% | 32% | |
| Physical inactivity | (2.5%) | 21% | ≤ 21% | 25% | |
| Binge drinking | (2.5%) | 18% | ≤ 8% | 18% | |
| Motor vehicle crash death rate | (2.5%) | 12 | ≤ 12 | 13 | |
| Chlamydia rate | (2.5%) | 192 | ≤ 84 | 457 | |
| Teen birth rate | (2.5%) | 22 | ≤ 22 | 34 | |
| Clinical Care | | | | | 7 ↑ |
| Uninsured adults/children | (5%) | 12% | ≤ 11% | 14% | |
| Primary care provider rate | (5%) | 1,441:1 | ≤ 631:1 | 874:1 | |
| Preventable hospital stays | (5%) | 42 | ≤ 49 | 74 | |
| Diabetic screening | (2.5%) | 86% | ≥ 89% | 84% | |
| Mammography screening | (2.5%) | 75% | ≥ 74% | 68% | |
| Social & Economic Factors | | | | | 7 ↓ |
| High school graduation rate | (5%) | 86% | | 76% | |
| Some college | (5%) | 67% | ≥ 68% | 63% | |
| Unemployment rate | (10%) | 11.0% | ≤ 5.4% | 12.5% | |
| Children in poverty | (10%) | 13% | ≤ 13% | 23% | |
| Inadequate social support | (2.5%) | 14% | ≤ 14% | 20% | |
| Singe-parent households | (2.5%) | 18% | ≤ 20% | 32% | |
| Violent crime or homicide rate | (5%) | 177 | ≤ 73 | 518 | |
| Physical Environment | | | | | 78 ↓ |
| Air pollution-particulate matter days | | 4 | 0 | 5 | |
| Air pollution-ozone days | (each 2%) | 8 | 0 | 3 | |
| Access to healthy foods | (2%) | 9% | 0% | 6% | |
| Fast food restaurants | (2%) | 54% | ≤ 25% | 48% | |
| Access to recreational facilities | (2%) | 9 | ≥ 16 | 9 | |

* 90th Percentile, i.e. only 10% are better ** Years of Potential Life Lost per 100,000, age-adjusted