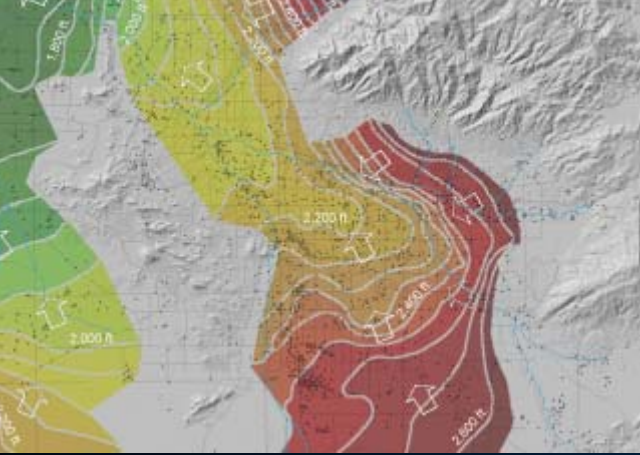


Countywide Water Resources Study and Assessment









- Calculate and map (GIS) groundwater volume
- Analyze groundwater and surface-water quality
 - Analyze infrastructure capacity
- Identify and prioritize areas of concern
 - Propose recommendations

Road Salt Management Program





Environmentally
Sensitive Area















Michigan Road & Safety Planning Commission

2005 GINSBERG Award Winner

This Award is Presented to

Ottawa County, MI

for
its program

Road Salt Management Program

in recognition of an effective and innovative program
which contributes to and enhances county government
in the United States.

[Signature]
Executive Director

[Signature]
County Executive Director

NACO National Association of Counties
The Heart of America's Counties