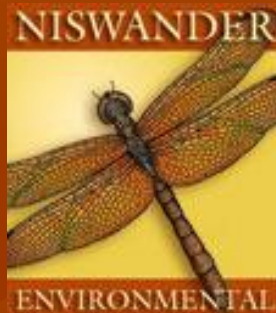


# Holland Country Club – Golf Course to Wetlands

John Scholtz, Director  
Ottawa County Parks & Recreation Commission



Amy A. Berry, Project Manager  
Niswander Environmental, LLC



# OTTAWA COUNTY PARKS:

Focusing on large, natural resource-based parks



Rosy Mound Natural Area

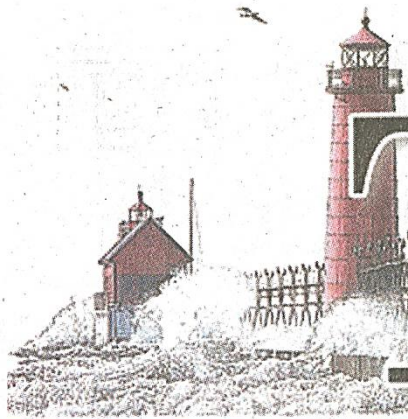


Crockery Creek  
Natural Area



# Growing Focus on Natural Community Restoration





# GRAND HAVEN TRIBUNE

FRIDAY, September 7, 2012

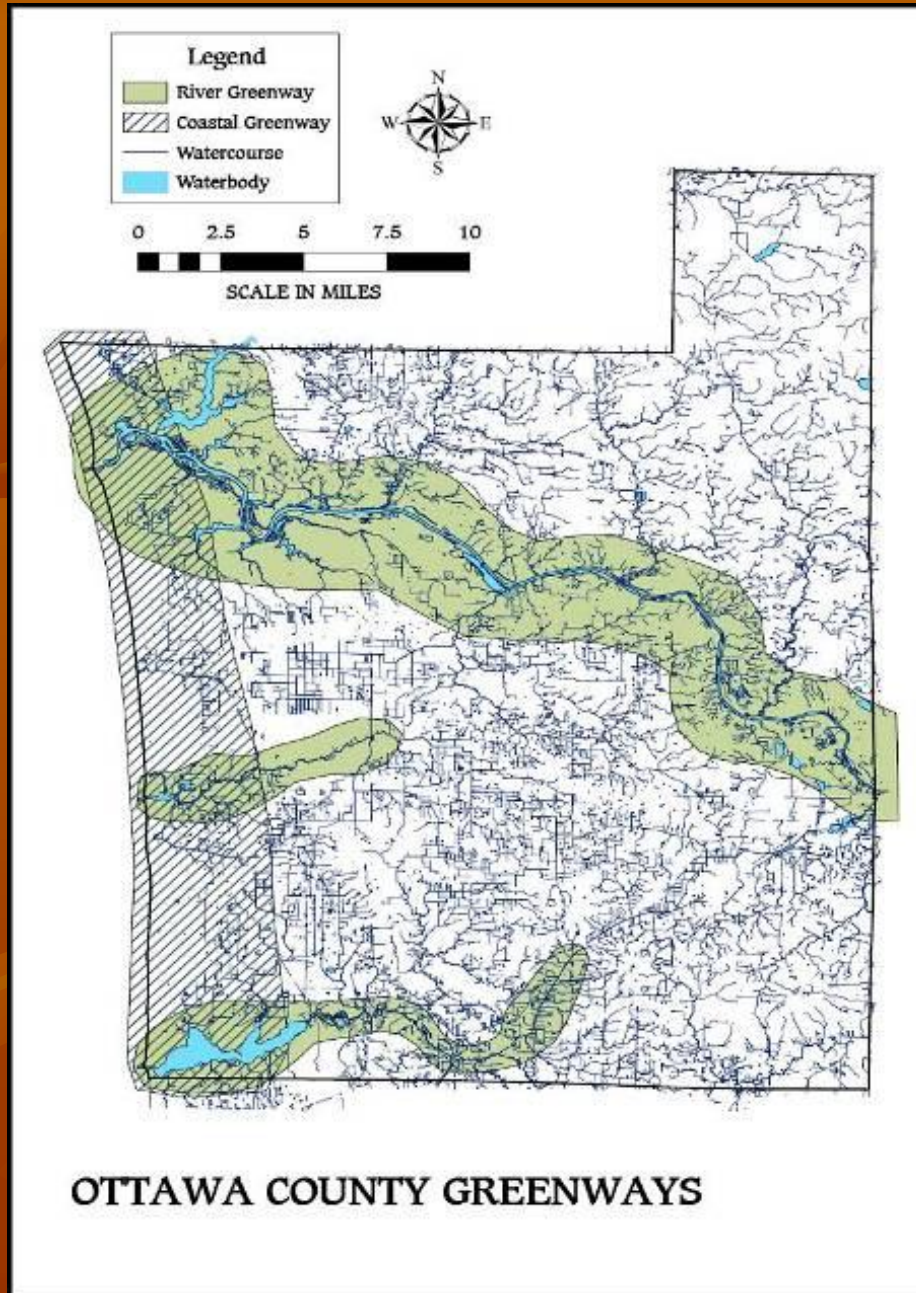
[www.grandhaventribune.com](http://www.grandhaventribune.com)

50¢ Weekday, \$1.00 Saturday

# Best U.S. beaches here

Gallop Yearly, Holland second happiest  
in nation





- LAKE MICHIGAN COASTAL GREENWAY
- GRAND RIVER GREENWAY
- PIGEON RIVER GREENWAY
- MACATAWA RIVER GREENWAY

Greenways improve water quality by creating a natural buffer zone that protects streams and rivers; by preventing soil erosion; and by filtering pollution caused by agricultural and road runoff.



# Macatawa Watershed Project

- 1970s-1995: Degraded water quality, high nutrients, algal blooms: hyper-eutrophic lake
- 1996 : put on 303 d list for nonattainment
  - DEQ received EPA Grant
  - Main problem: Phosphorus
  - Develop Total Maximum Daily Load (TMDL)
- Goal Set – 70% Phosphorus Reduction
  - Annual load was 126,100 lbs – 138,500 lbs P
  - 90% coming from non point sources
  - Goal was set at capping P inputs at 55,000 lbs/yr

# Watershed Plan Goals

## Implement Best Practices

- Buffer/filter strips
- Education
- Planting native vegetation
- Improve stream crossings
- Wetland construction in suburban areas, agricultural areas and in relation to construction projects.



# Challenges in Finding Macatawa Park Land





# 612 Acre Upper Macatawa Natural Area

JF New provided consulting assistance with 150+ acre wetland restoration with a series of treatment wetlands, 1,600 feet of river relocated and re-meandered, ditches re-routed.

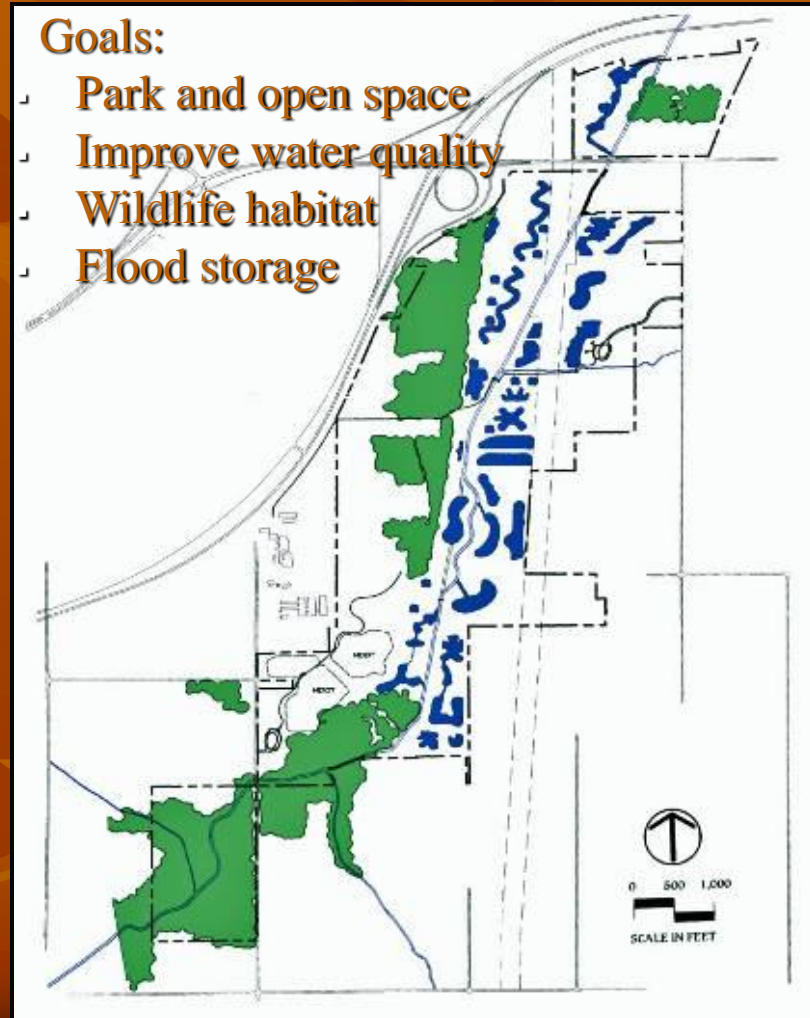


## Diverse partners:

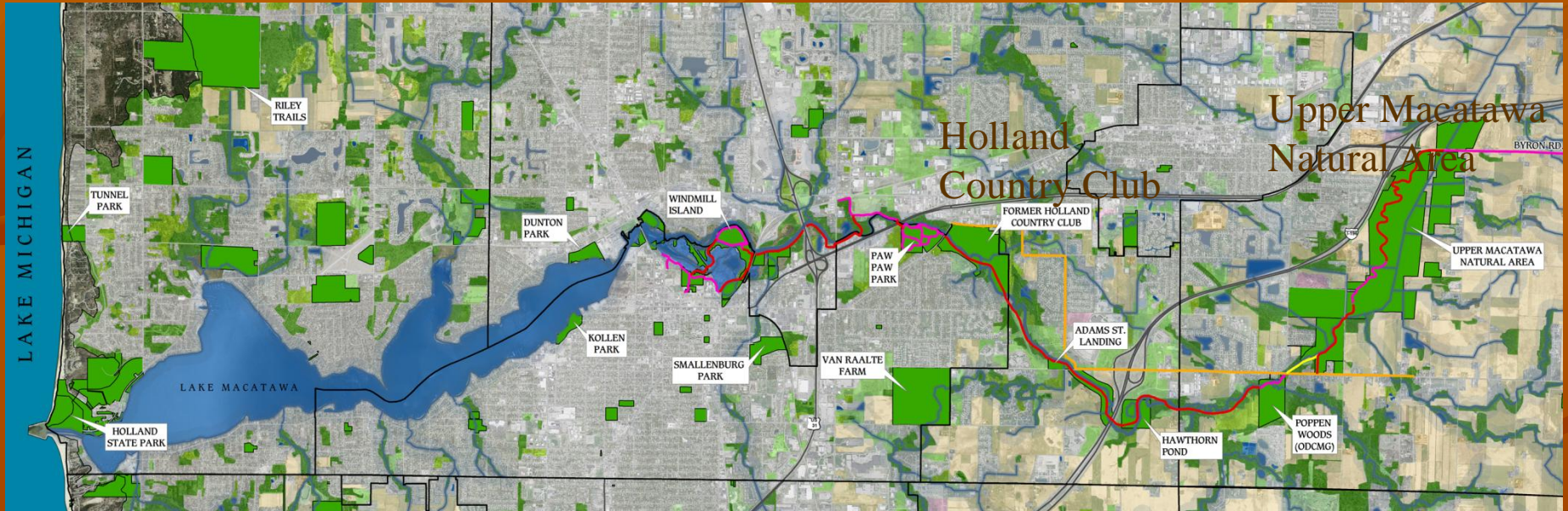
- ODC Macatawa Greenway
- Macatawa Watershed Project
- USDA /NRCS
- Ducks Unlimited
- Land Conservancy of West Michigan
- Michigan DEQ
- Michigan Department of Transportation
- Ottawa Conservation District

## Goals:

- Park and open space
- Improve water quality
- Wildlife habitat
- Flood storage



# 122 Acre Holland Country Club Property Becomes Available



\$450,000 purchase from  
Macatawa Bank

\$70,000 donations  
spearheaded by the  
Outdoor Discovery Center  
Macatawa Greenway  
Partnership



# Site Acquired in 2010



## MACATAWA GREENSPACE

SITE INVENTORY & ANALYSIS - CULTURAL FEATURES

City of Holland, Michigan



Ottawa County Parks & Recreation Commission

# Holland Country Club Restoration Planning

- Niswander Environmental searching for mitigation site and public private partnership.
- EPA announces first round of Great Lakes Restoration Initiative grants.
- Project partners brainstorm initial concept with Niswander Environmental and grant submitted.
- Request Foods – 22 acre wetland mitigation project approved.
- EPA Grant – 32 acre wetland restoration approved
- Multi-purpose project with wetland/water quality focus.



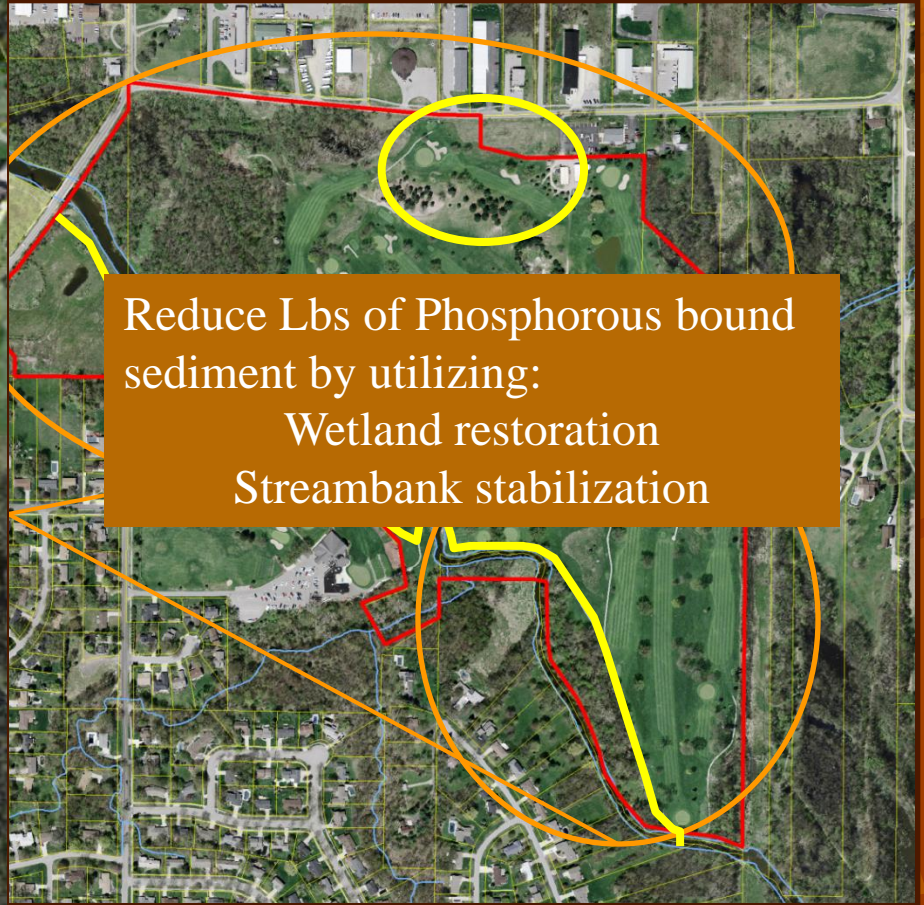
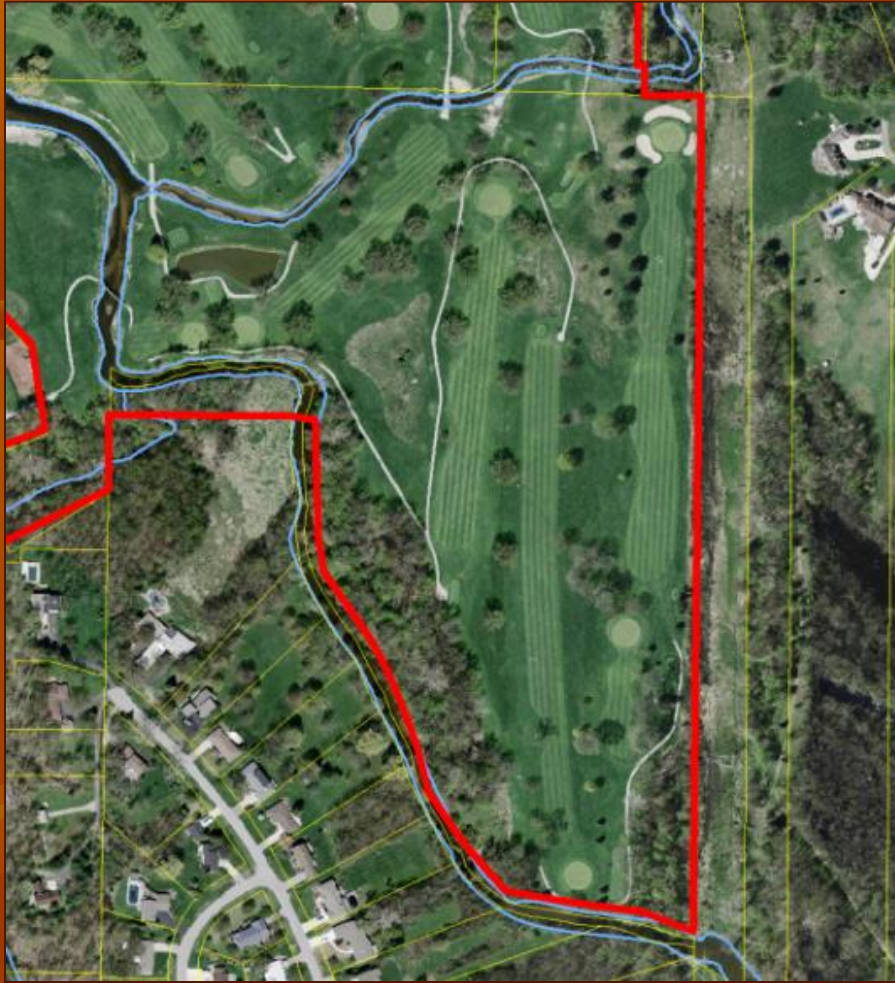
**HOLLAND COUNTRY CLUB RESTORATION  
PROPOSED RESTORATION CONCEPT PLAN**

1" = 500 FEET



# Holland Country Club Site Challenges & Design

## Golf Course to Wetlands Takes Shape

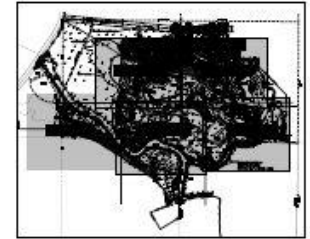


Reduce Lbs of Phosphorous bound sediment by utilizing:  
Wetland restoration  
Streambank stabilization

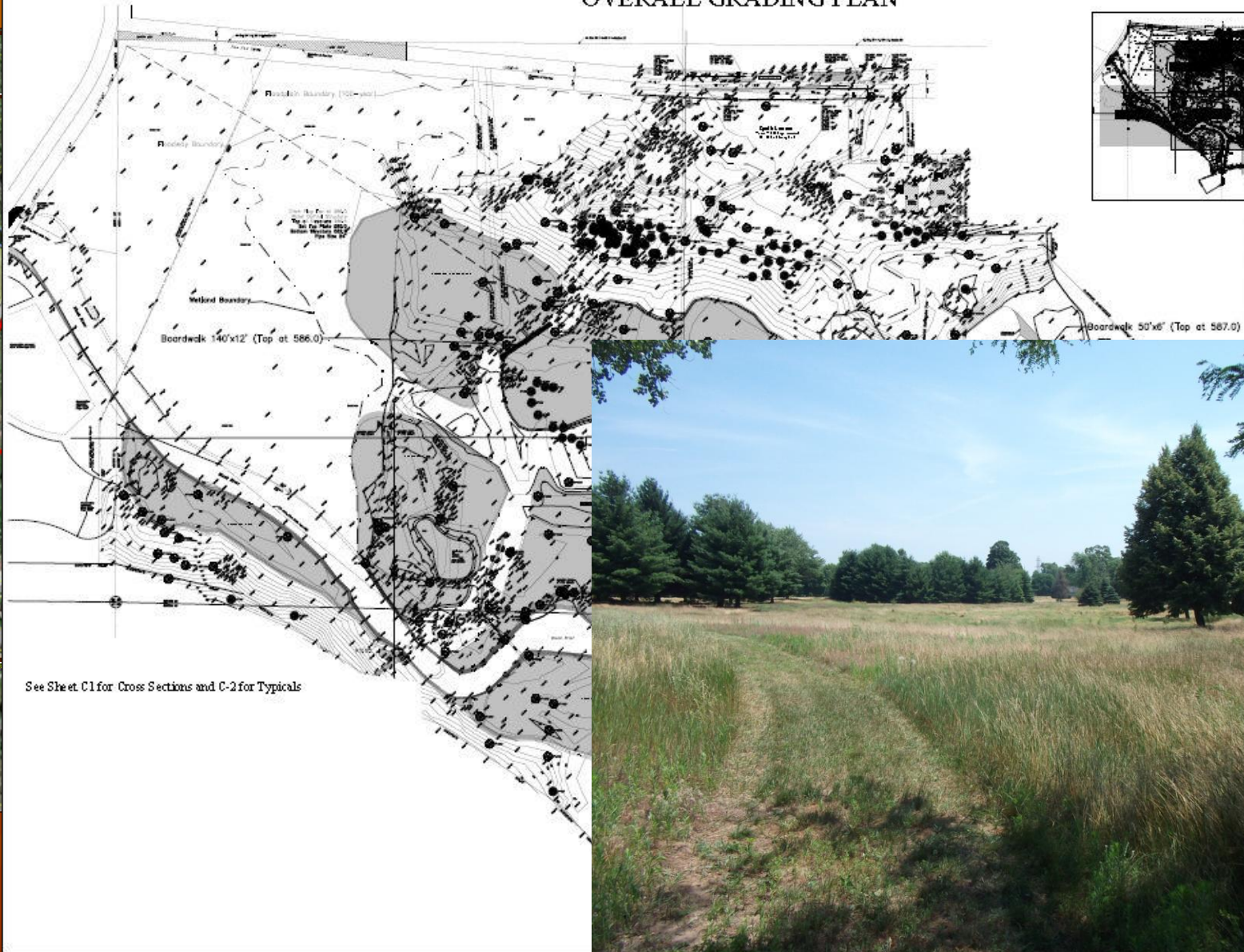
■ Phase II: wetland, Stream, and Prairie Restoration

# Site Challenges & Design

## OVERALL GRADING PLAN



DOS/



See Sheet C1 for Cross Sections and C-2 for Typical's

# Site Challenges & Design

influence of Noordeloos/  
acatawa & Flooding  
historical Location  
Large Trees  
rail systems  
park amenities  
County Drain & Unknown  
rain Systems



# Site Challenges & Design





# Site Challenges & Design

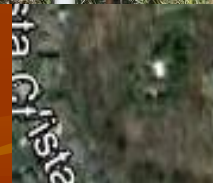
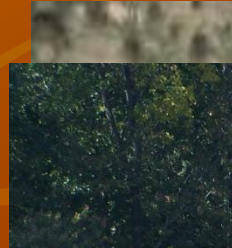


Bank Stabilization  
er Grade Changes

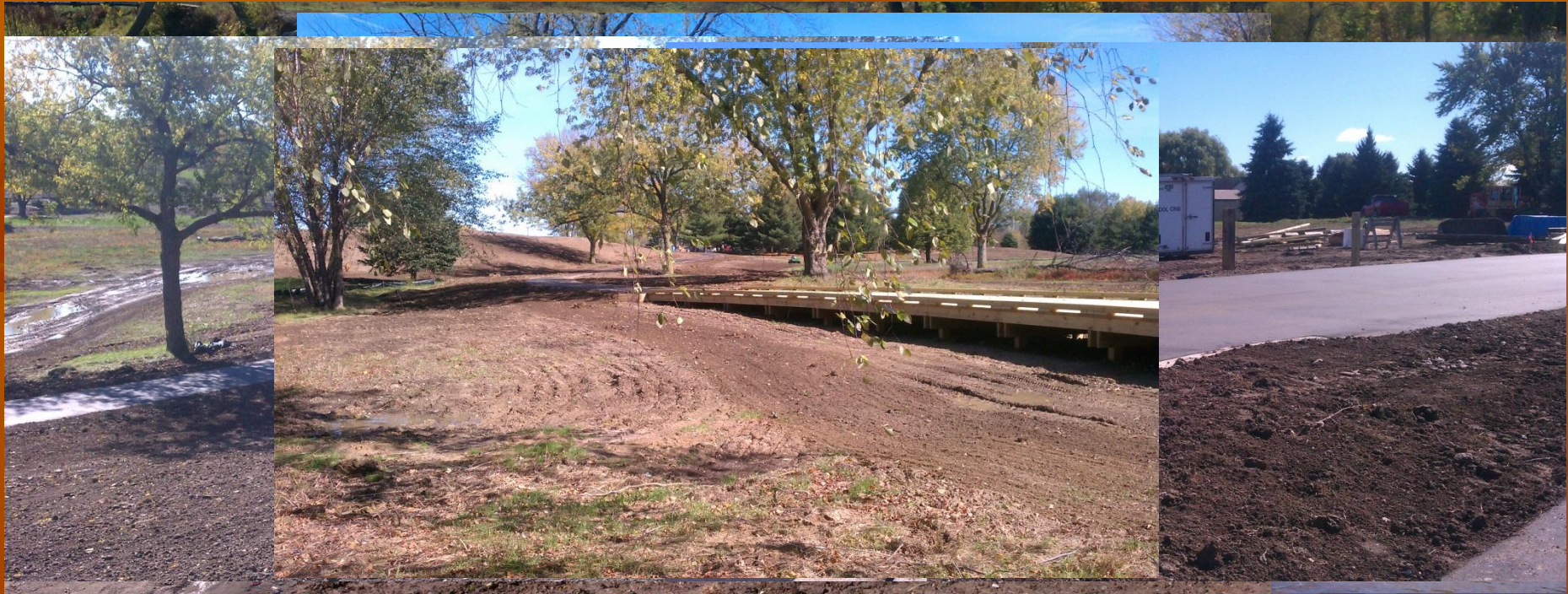
# Phase I - Mitigation

## Project Summary

- Designed & Constructed in 2010 by Niswander Environmental
- 70,000 cyd additional floodplain storage
- Removal of drain tiles and pump cistern
- Base for park & trails
- 22 acres wetland seed, 6 acres prairie seed
- 8,400 trees installed



# Phase II - Restoration



## Project Summary

- Designed in 2011 by Niswander Environmental
- Contractor selected July 2011 TopGrade Site Mgt.
- Northern tier completed 2011, Rest 2012
- 60,000 cyd addtl floodplain storage
- Removal of drain tiles and pump cistern
- Trails & parking lot paved, boardwalks installed
- 32 acres wetland seed, 9 acres prairie seed
- 5,000 feet of streambank stabilized

# Macatawa River Greenspace Golf Course to Wetlands

- Future
  - EPA Reporting and Close-out
    - STEPL Model
  - Park Opening
  - Greenway Trail Extension – Other Projects
  - Outdoor Discovery Center Stream Monitoring

# Questions



Ottawa County Parks &  
Recreation Commission  
12220 Fillmore Street  
West Olive, Michigan 49460

NISWANDER



ENVIRONMENTAL