

# COMMUNITY MENTAL HEALTH OF OTTAWA COUNTY

FY 2015  
Annual  
Report

# OBJECTIVES

- **2015 Budget Overview**
- **Activity and Accomplishments**
- **2016 Update**

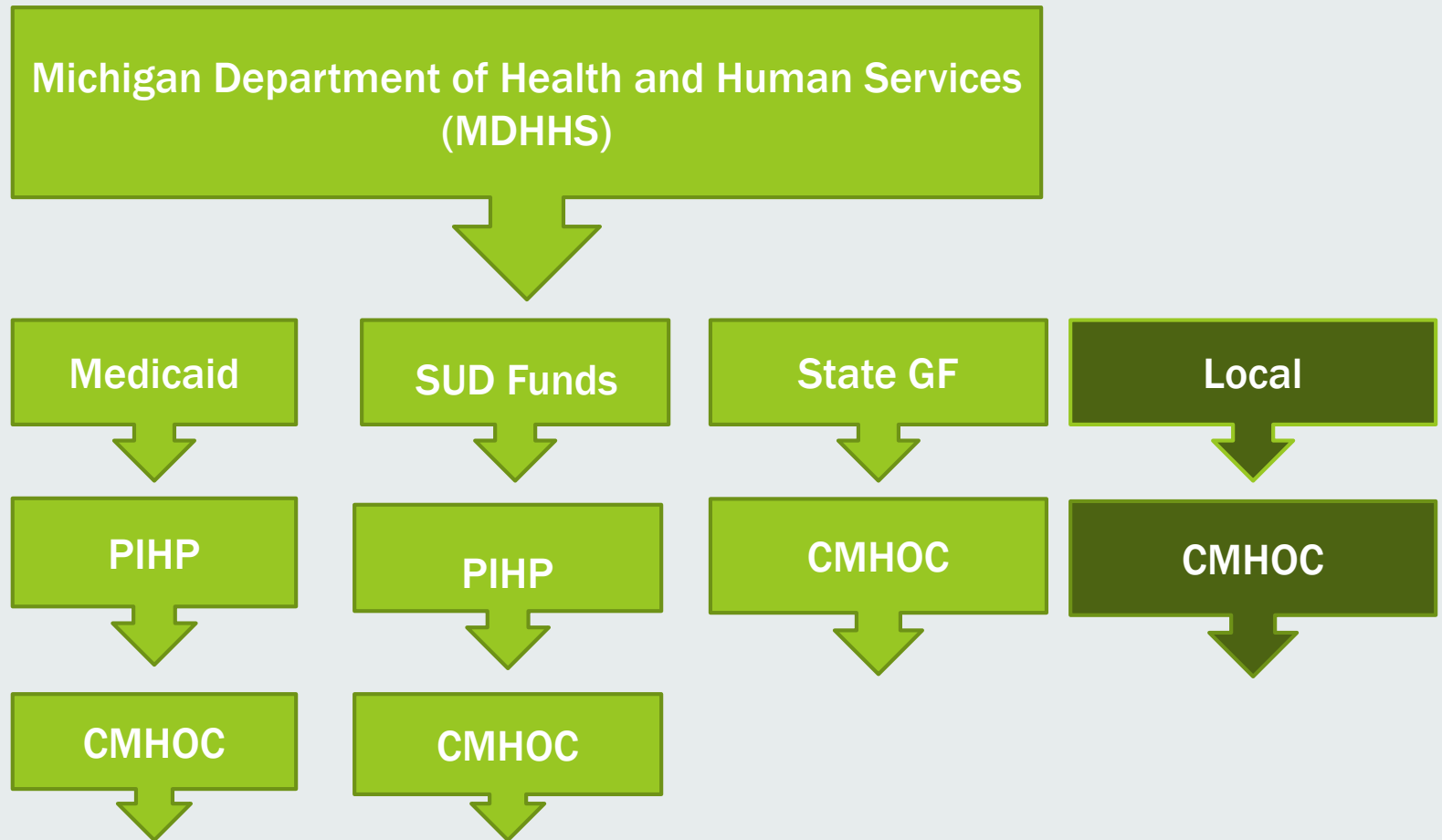
# FISCAL YEAR 2015

Report

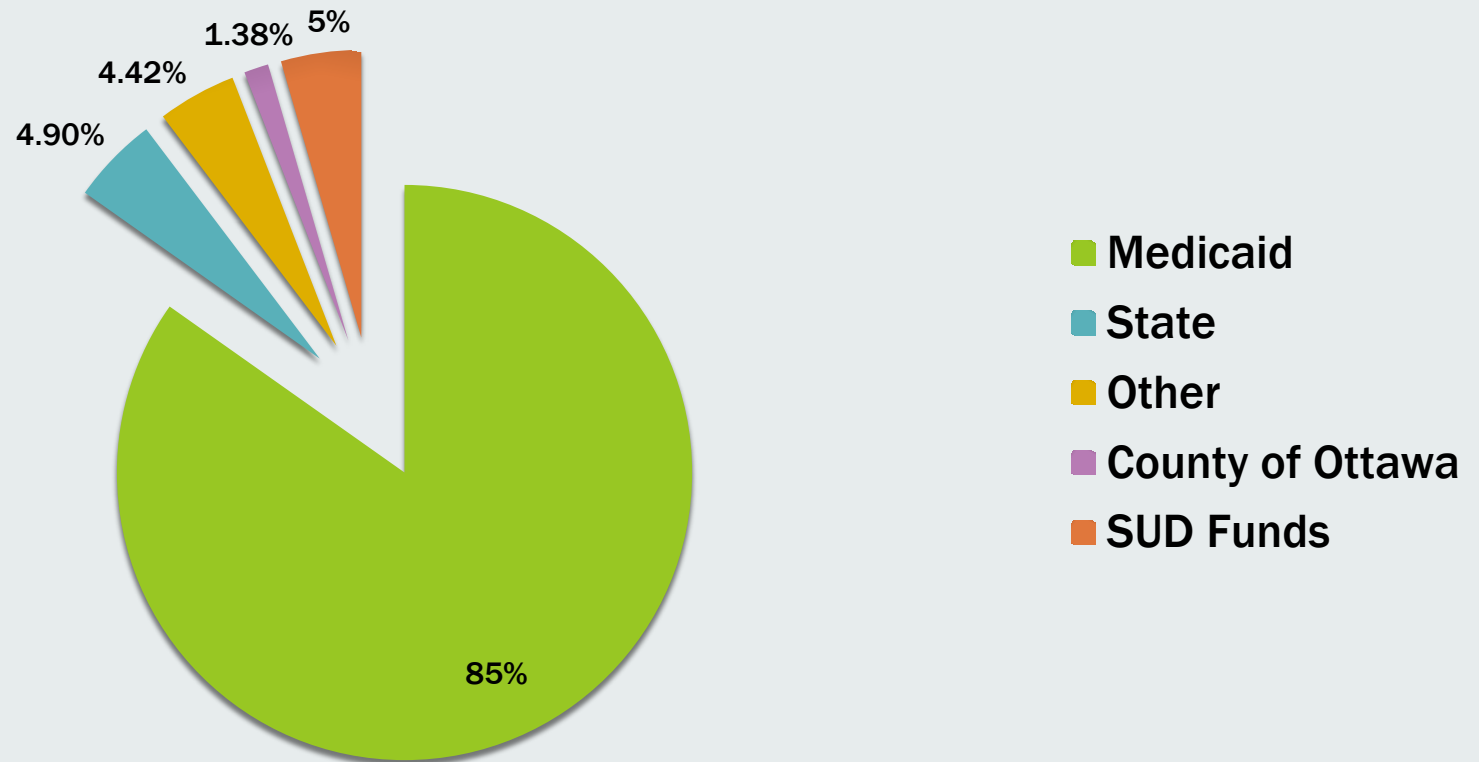
- In FY 2015 CMHOC was facing a budget shortfall of \$1.9 million and up to \$7 million over the next four years. In order to address the shortfall CMHOC restructured programming, reduced staffing, and in some cases services to consumers were reduced or terminated.
- In August 2015 Kandu announced their closure which led to transitioning over 200 consumers to different skill building and community living support services throughout the community.
- In October 2015 went before the Ottawa County Board of Commissioners and requested a Mental Health Millage of 0.3 mils to be placed on the March 2016 ballot.



# FUNDING SOURCES



# REVENUES FY 2015



# REVENUES MENTAL HEALTH SERVICES

	<u>FY 2015*</u>	<u>FY 2014</u>	<u>FY 2013</u>	<u>FY 2012</u>
<b>Medicaid</b> (Includes \$894,517 from LRE savings)	\$34,359,844 88.79%	\$34,026,798 86.1%	\$32,553,894 83.38%	\$31,184,097 83%
<b>State Funds</b> (Includes \$225,800 from 236 transfer)	\$1,986,056 5.13%	\$2,890,192 7.31%	\$3,944,785 10.10%	\$3,891,121 10.36%
<b>Other</b>	\$1,791,667 4.63%	\$2,043,637 5.17%	\$1,926,787 4.93%	\$1,886,296 5.02%
<b>County of Ottawa</b> <i>Allocation Rent, Interest</i>	\$476,500 \$ 84,249 <u>(\$4,951)</u> \$558,157 1.42%	\$476,500 \$ 84,249 <u>(\$2,359)</u> \$558,390 1.42%	\$476,500 \$86,608 <u>\$55,225</u> \$618,333 1.58%	\$476,500 \$86,608 <u>\$46,507</u> \$609,615 1.62%
<b>Total Revenue</b>	\$38,695,724 100%	\$39,521,376 100%	\$39,043,799 100%	\$37,571,129 100%

## \* REVENUE EXPLANATION

- Medicaid revenue includes \$894,517.00 from LRE savings.
  - Ottawa's use of savings as well as other partners prompted the need for a regional audit and plan of correction
- State General Funds includes \$225,800.00 238 transfer.
  - Ottawa requested and received a 238 transfer from Network180
- Reduction in funding from 2014 to 2015 = \$825,652.00
- Total revenue losses for 2015 = \$1,945,969.00

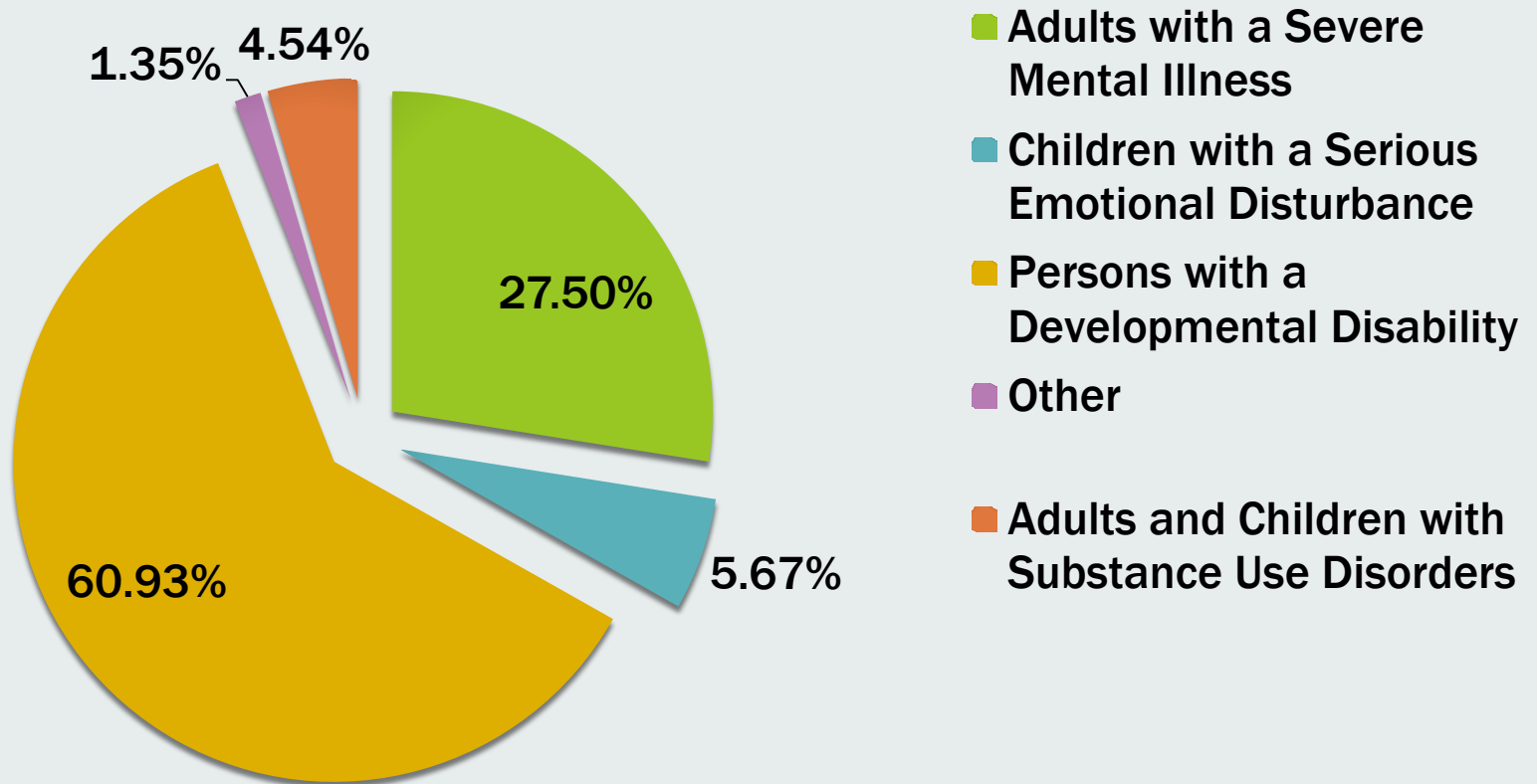


# REVENUES

## SUBSTANCE USE DISORDER SERVICES

<b>Medicaid</b>	<b><u>FY 2015</u></b> <b>\$981,327</b> <b>53.71%</b>
<b>Block Grant Funds</b>	<b>\$673,099</b> <b>36.84%</b>
<b>PA 2</b>	<b>\$161,440</b> <b>8.84%</b>
<b>Other</b>	<b>\$11,151</b> <b>0.61%</b>
<b>Total Revenue</b>	<b>\$1,827,017</b> <b>100%</b>

# EXPENDITURES FY 2015



# EXPENDITURES MENTAL HEALTH

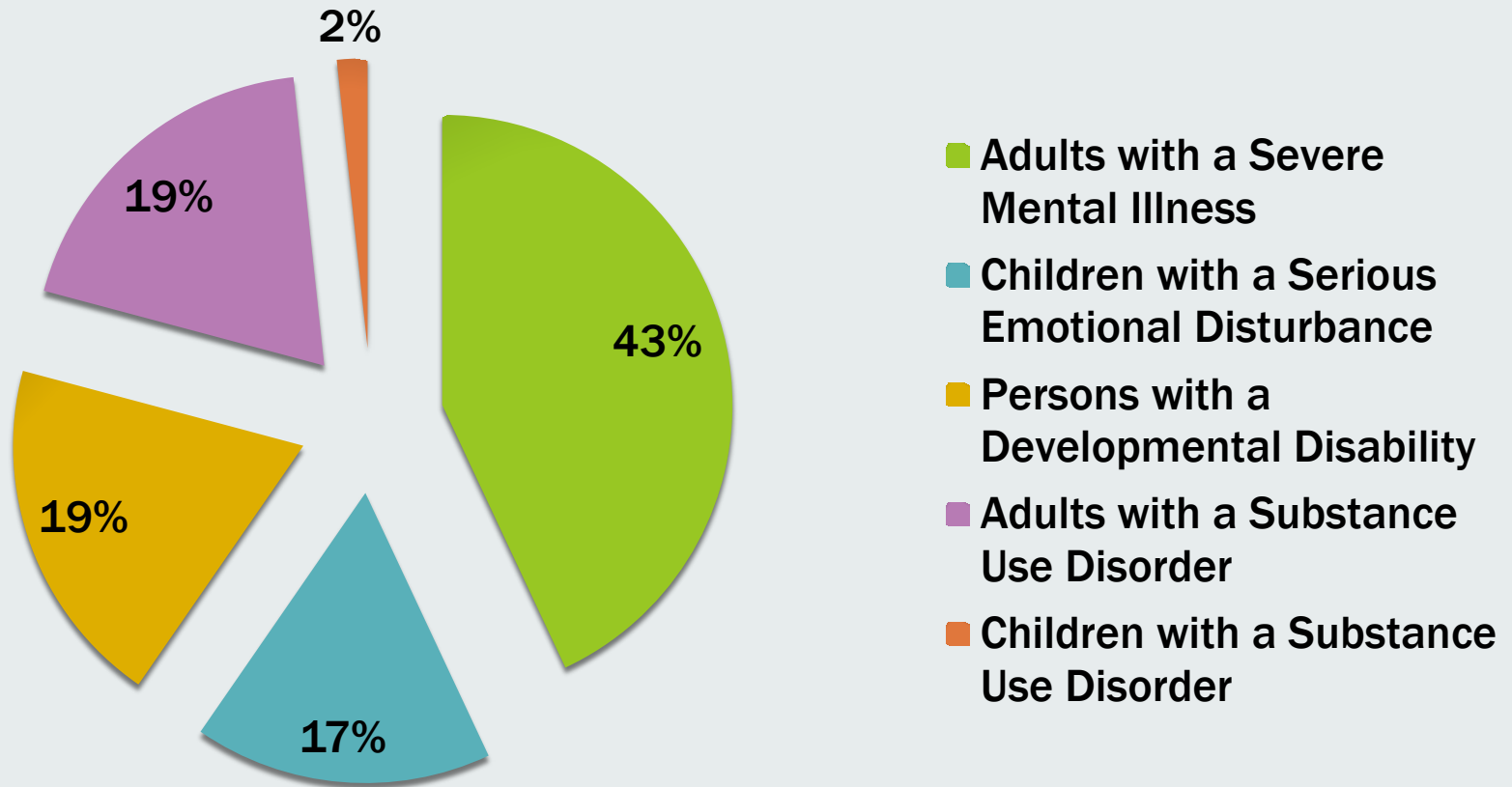
	<u>FY 2015</u>	<u>FY 2014</u>	<u>FY 2013</u>	<u>FY 2012</u>
<b>Adults with a Severe Mental Illness</b>	\$11,062,124 28.81%	\$11,834,119 29.94%	\$12,093,788 30.97%	\$11,809,127 31.43%
<b>Children with a Serious Emotional Disturbance</b>	\$2,282,337 5.94%	\$2,422,014 6.13%	\$2,001,182 5.13%	\$1,732,036 4.61%
<b>Persons with a Developmental Disability</b>	\$24,505,630 63.83%	\$24,361,185 61.64%	\$23,848,875 61.08%	\$23,374,296 62.21%
<b>Other</b>	\$544,253 1.42%	\$904,058 2.29%	\$1,099,954 2.82%	\$655,670 1.75%
<b>Totals</b>	\$38,394,344 100%	\$39,521,376 100%	\$39,043,799 100%	\$37,571,129 100%

# EXPENDITURES

## SUBSTANCE USE DISORDER SERVICES

<b>Adults with a Substance Use Disorder</b>	<b><u>FY 2015</u></b> <b>\$1,581,034</b> <b>86.54%</b>
<b>Children with a Substance Use Disorder</b>	<b>\$245,983</b> <b>13.46%</b>
<b>Total Expenses</b>	<b>\$1,827,017</b> <b>100%</b>

# PERSONS SERVED FY 2015



# PERSONS SERVED

	<u>FY2015</u>	<u>FY2014</u>	<u>FY 2013</u>	<u>FY 2012</u>
Adults with a Severe Mental Illness	1548	1516	1539	1713
Children with a Serious Emotional Disturbance	597	555	564	479
Persons with a Developmental Disability	703	729	681	673
Adults with a Substance Use Disorder	689			
Children with a Substance Use Disorder	61			
<b>Total Served</b>	<b>3,598</b>	<b>2,798</b>	<b>2,784</b>	<b>2,865</b>

# FISCAL YEAR 2016

Update

# THE FUTURE

- Successfully passed the Mental Health Millage with nearly 60% of voters approving
- Developing the programs proposed by the millage and identifying outcome measurements
- We will continue to work with our community partners and stakeholders to find or create quality, cost effective, and sustainable alternatives
- We will strive to remain positive and solution focused and look for additional revenues
- We need to continue to advocate for equitable and adequate funding for mental health services for our most vulnerable citizens