



OTTAWA COUNTY WATER RESOURCES COMMISSIONER

ORDER FOR LAYING OUT AND DESIGNATING
A DRAINAGE DISTRICT

AGAPE DRAIN

WHEREAS, an application, dated June 8, 2020, has been made and filed with me, the Ottawa County Water Resources Commissioner, for the Laying Out and Designating of a Drainage District; and

WHEREAS, the County Treasurer has provided a statement that less than 33 1/3% of the lands in the proposed drainage district owe taxes and special assessments over the preceding three years; and

WHEREAS, I retained *Eng., Inc.* to perform a survey of the proposed drain and drainage district.


NOW, THEREFORE, I do hereby determine:

1. The name of the drain is the Agape Drain.
2. The Drainage District boundaries are as described in the attached *Exhibit A*.
3. The following public corporations liable for an assessment are as follows:

Spring Lake Township

4. A description of the proposed drain as provided in MCL 280.54, including the type of construction and estimated cost of construction is attached as *Exhibit B*.

Dated: 10/1/20



Joe Bush
Ottawa County Water Resources Commissioner

EXHIBIT 'A'

Agape Drain Drainage District

Drainage District Boundary Description

Part of Sections 3 and 4 of Town 8 North, Range 16 West, Spring Lake Township
Ottawa County, Michigan

Beginning at the Northwest corner of Section 3, Spring Lake Twp., Ottawa County, MI. Thence South on said West line of said Section 3 a distance of 936 feet; thence S89°1'E 74 feet; thence S3°8'W 83 feet; thence S21°57'W 65 feet; thence S0°18'E 169 feet; thence S68°56'E 143 feet; thence S26°57'E 60 feet; thence S84°37'E 77 feet; thence S42°49'E 84 feet; thence S15°21'E 96 feet; thence S50°58'E 42 feet; thence S10°48'W 219 feet; thence S74°8'W 139 feet; thence S13°32'W 164 feet; thence S36°14'W 248 feet; thence S58°24'E 40 feet; thence S20°45'W 282 feet; thence S1°3'W 47 feet; thence N89°42'W 30 feet to a point on the West line of said Section 3 said point lying 2487 feet South from the Northwest corner; thence N89°42'W into said Section 4 a distance of 166 feet; thence N68°46'W 425 feet; thence N21°54'W 437 feet; thence N41°44'W 281 feet; thence N0°38'E 403 feet; thence N89°8'W 188 feet; thence S1°23'W 56 feet; thence S65°53'W 83 feet; thence N1°25'E 1446 feet to a point on the North line of said Section 4 said point lying 1213 feet West from the Northeast corner; thence East on said North line a distance of 1213 feet more or less to the point of beginning.

Containing 64.4 Acres more or less.

The basis of this description was the Ottawa County GIS mapping system and is subject to its accuracy.

Prepared by: Eng., Inc.

Dated: 9/30/2020

EXHIBIT 'B'

**AGAPE DRAIN DRAINAGE DISTRICT
ROUTE AND COURSE**

**BEGINNING AT A POINT 1850 FEET SOUTH AND 30 FEET WEST FROM THE
NORTHEAST CORNER OF SECTION 4, TOWNSHIP 8 NORTH, RANGE 16 WEST, SPRING
LAKE TOWNSHIP, OTTAWA COUNTY, MICHIGAN, THENCE NORTH PARALLEL WITH
AND 30 FEET WEST FROM THE EAST LINE OF SAID SECTION 4 A DISTANCE OF 1820
FEET TO THE POINT OF ENDING.**

**The basis of this description was the Ottawa County GIS mapping system and is subject
to its accuracy.**

Prepared by: Eng., Inc.

Date: 5/22/2020

JOE BUSH

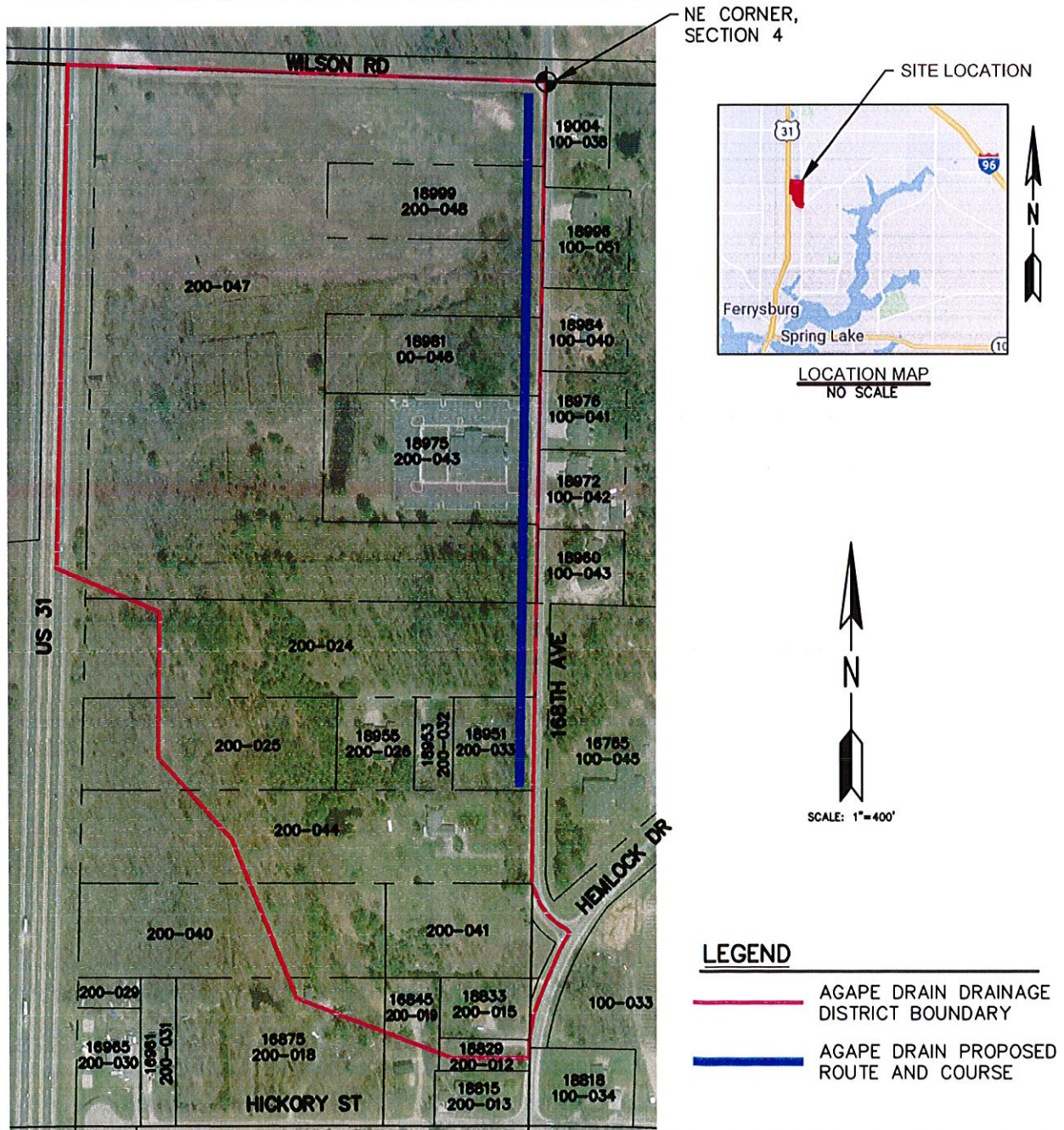
OTTAWA COUNTY WATER RESOURCES COMMISSIONER

AGAPE DRAIN

PART OF SECTIONS 3 AND 4, T8N, R16W SPRING LAKE TOWNSHIP

ROUTE AND COURSE

BEGINNING AT A POINT 1850 FEET SOUTH AND 45 FEET WEST FROM THE NORTHEAST CORNER OF SECTION 4, TOWNSHIP 8 NORTH, RANGE 16 WEST, SPRING LAKE TOWNSHIP, OTTAWA COUNTY, MICHIGAN, THENCE NORTH PARALLEL WITH AND 30 FEET WEST FROM THE EAST LINE OF SAID SECTION 4 A DISTANCE OF 1820 FEET TO THE POINT OF ENDING.



JOE BUSH
OTTAWA COUNTY WATER RESOURCE COMMISSIONER

AGAPE DRAIN
SPRING LAKE TWP, OTTAWA COUNTY, MICHIGAN

Eng.TM
Engineering & Surveying

4063 Grand Oak Drive Suite A109
Lansing, MI 48911
517.887.1100

16930 Robbins Road Suite 105
Grand Haven, MI 49417
616.743.7070
engdot.com

OTTAWA COUNTY DRAIN COMMISSIONER

**NOTICE OF FILING AN ORDER LAYING OUT
AND DESIGNATING A DRAINAGE DISTRICT**

AGAPE DRAIN

Notice is Hereby Given, that I, Joe Bush, Ottawa County Water Resources Commissioner, filed an Order Laying Out and Designating a Drainage District, dated June 8, 2020, for the Agape Drain, according to Chapter 3 of Public Act 40 of 1956, as amended.

The route and course of the proposed Drain is described as follows:

BEGINNING AT A POINT 1850 FEET SOUTH AND 30 FEET WEST FROM THE NORTHEAST CORNER OF SECTION 4, TOWNSHIP 8 NORTH, RANGE 16 WEST, SPRING LAKE TOWNSHIP, OTTAWA COUNTY, MICHIGAN, THENCE NORTH PARALLEL WITH AND 30 FEET WEST FROM THE EAST LINE OF SAID SECTION 4 A DISTANCE OF 1820 FEET TO THE POINT OF ENDING.

The basis of this description was the Ottawa County GIS mapping system and is subject to its accuracy.

Prepared by: Eng., Inc.

Date: 5/22/2020

The lands comprised within the Drainage District are described as follows:

Part of Sections 3 and 4 of Town 8 North, Range 16 West, Spring Lake Township
Ottawa County, Michigan

Beginning at the Northwest corner of Section 3, Spring Lake Twp., Ottawa County, MI. Thence South on said West line of said Section 3 a distance of 936 feet; thence S89°1'E 74 feet; thence S3°8'W 83 feet; thence S21°57'W 65 feet; thence S0°18'E 169 feet; thence S68°56'E 143 feet; thence S26°57'E 60 feet; thence S84°37'E 77 feet; thence S42°49'E 84 feet; thence S15°21'E 96 feet; thence S50°58'E 42 feet; thence S10°48'W 219 feet; thence S74°8'W 139 feet; thence S13°32'W 164 feet; thence S36°14'W 248 feet; thence S58°24'E 40 feet; thence S20°45'W 282 feet; thence S1°3'W 47 feet; thence N89°42'W 30 feet to a point on the West line of said Section 3 said point lying 2487 feet South from the Northwest corner; thence N89°42'W into said Section 4 a distance of 166 feet; thence N68°46'W 425 feet; thence N21°54'W 437 feet; thence N41°44'W 281 feet; thence N0°38'E 403 feet; thence N89°8'W 188 feet; thence S1°23'W 56 feet; thence S65°53'W 83 feet; thence N1°25'E 1446 feet to a point on the North line of said Section 4 said point lying 1213 feet West from the Northeast corner; thence East on said North line a distance of 1213 feet more or less to the point of beginning.

Containing 64.4 Acres more or less.

The basis of this description was the Ottawa County GIS mapping system and is subject to its accuracy.

Prepared by: Eng., Inc.
Dated: 9/30/2020

Joe Bush
Ottawa County Water Resources Commissioner