



OTTAWA COUNTY WATER RESOURCES COMMISSIONER

JOE BUSH

12220 Fillmore Street, Room 141

West Olive, MI 49460

BEECH GROVE DRAIN

NOTICE OF DAY OF REVIEW OF APPORTIONMENTS

DATE: Wednesday, February 8, 2023
TIME: 9:00 a.m. to 5:00 p.m.
LOCATION: Ottawa County Administration Building
12220 Fillmore Street, Conference Room E
West Olive, MI 49460
QUESTIONS: (616) 994-4530

The Ottawa County Water Resources Commissioner will hold a Day of Review of Apportionments on the above date, time, and location. The Day of Review is an opportunity to review the tentative apportionment of benefits for each parcel and municipality within the Beech Grove Drain Drainage District.

The Water Resources Commissioner, engineers, and/or other staff members will be available to assist individuals throughout the day and make revisions where necessary. There is no need to schedule an appointment for a specific time on the Day of Review. The computation of costs for the Drain will also be available at the Day of Review. Drain assessments are collected in the same manner as property taxes and will appear on your winter tax bill. If drain assessments are being collected for more than one (1) year, you may pay the assessment in full with any interest to date at any time and avoid further interest charges.

Persons with disabilities needing accommodations for effective participation in the Day of Review should contact the Water Resources Commissioner's Office at the number noted above (voice) or through the Michigan Relay Center at 7-1-1 (TDD) at least 24 hours in advance of the Day of Review to request mobility, visual, hearing, or other assistance.

Comments on the apportionment of benefits may be submitted to the Water Resources Commissioner in writing before the date of the Day of Review to the Ottawa County Water Resources Commissioner at 12220 Fillmore Street, Room 141, West Olive, MI 49460 or to waterresourcescommissioner@miottawa.org, or comments may be submitted in writing or verbally at the Day of Review. Comments submitted in advance must be received by the Water Resources Commissioner prior to the Day of Review to ensure consideration.

The following is a list of any county, township, city, or village to be assessed: Ottawa County and Georgetown Township. A map of the Drainage District can be found enclosed with this notice and on the Ottawa County Water Resources Commissioner's website at: <https://www.miottawa.org/departments/drain/>.

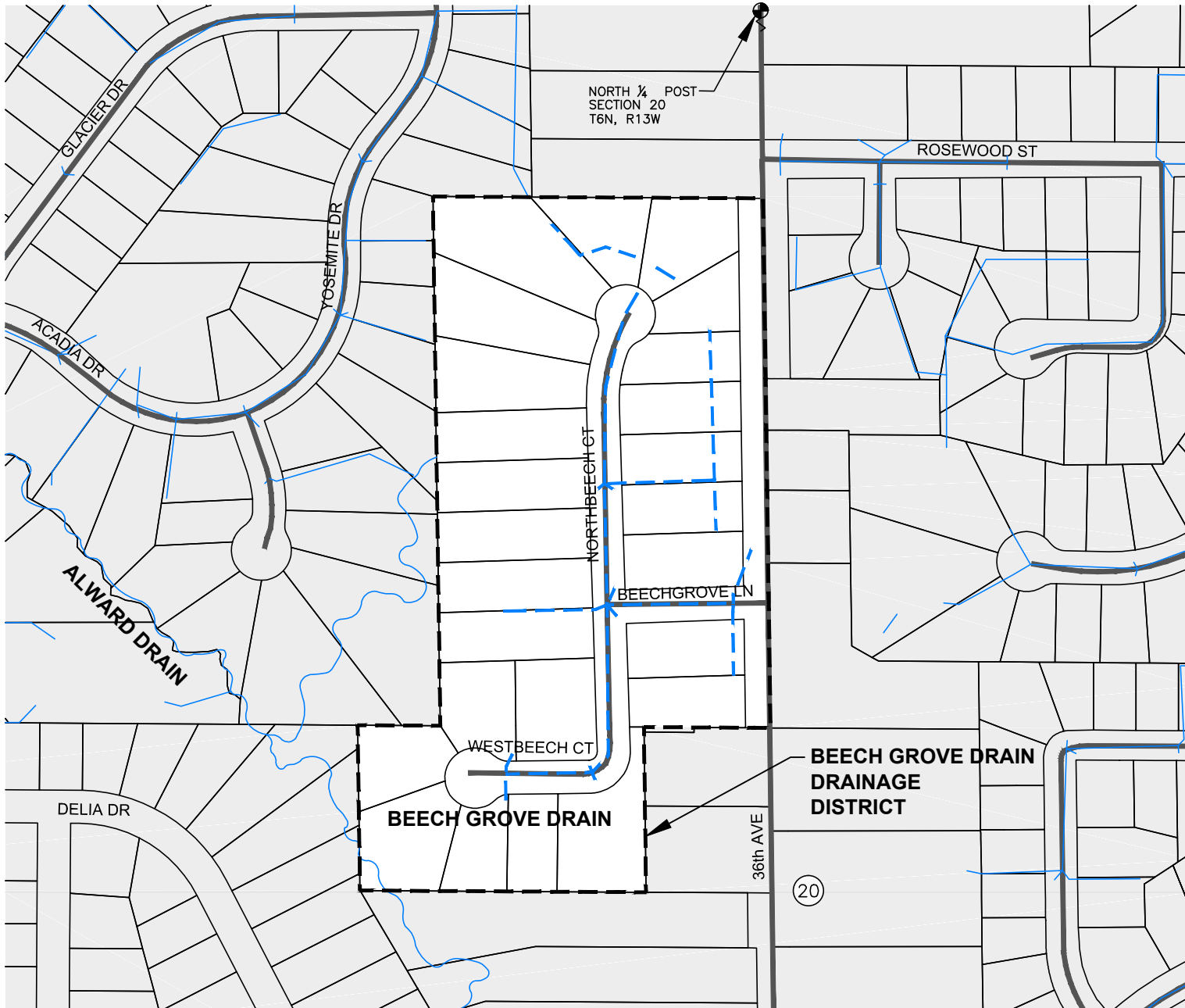
You may appeal the Water Resources Commissioner's determination of apportionments to the Ottawa County Probate Court within ten (10) days.

Joe Bush
Ottawa County Water Resources Commissioner

MAILING MAP

BEECH GROVE 433 DRAIN DRAINAGE DISTRICT

OTTAWA COUNTY WATER RESOURCES COMMISSIONER - JOE BUSH

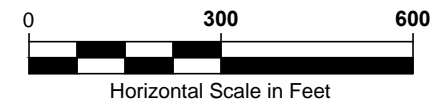
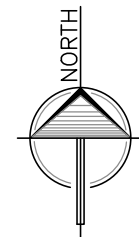


LEGEND

- - - ENCLOSED DRAIN
- OPEN CHANNEL DRAIN
- SECTION LINE
- ROADS
- DISTRICT BOUNDARY
- TOWNSHIP LINE
- # SECTION NUMBERS

DRAIN DISTRICT AREA 20.38 ACRES

DRAIN LENGTH: 0.56 MILES



LRE <small>ENGINEERS & ARCHITECTS</small>	2121 3 Mile Rd. NW Walker, MI 49544 Ph: 616-301-7888 www.LREMI.com	PROJECT#: 22-070
		DRAWN BY: CAD
		DATE: 12/2022
		QA/QC: DJF