



County of Ottawa
Office of the Water Resources Commissioner

Joe Bush
Commissioner

Josiah Timmermans
Chief Deputy

12220 Fillmore St, Room 141, West Olive, MI 49460 Ph. (616) 994-4530 FAX (616) 994-4529 Email waterresourcescommissioner@miottawa.org

NOTICE OF DRAIN MAINTENANCE

March 24, 2022

This notice is to inform you that a maintenance contract has been approved for the **Brower Drain** which runs through or near your property. The contractor will be starting work within the next two weeks. Contractor information including a map of the proposed drain cleanout area can be found on our website:

http://www.miottawa.org/Departments/Drain/maintenance_projects.htm

The drain maintenance may include; **brush/tree removal and sediment removal**. Any debris removed from the drain will be cut into manageable pieces and stacked in neat piles within the drain easement. If you would like the debris removed or placed in specific areas, it is your responsibility to make arrangements with the contractor and pay the associated costs directly. The contractor will restore all disturbed areas created as a result of the maintenance performed.

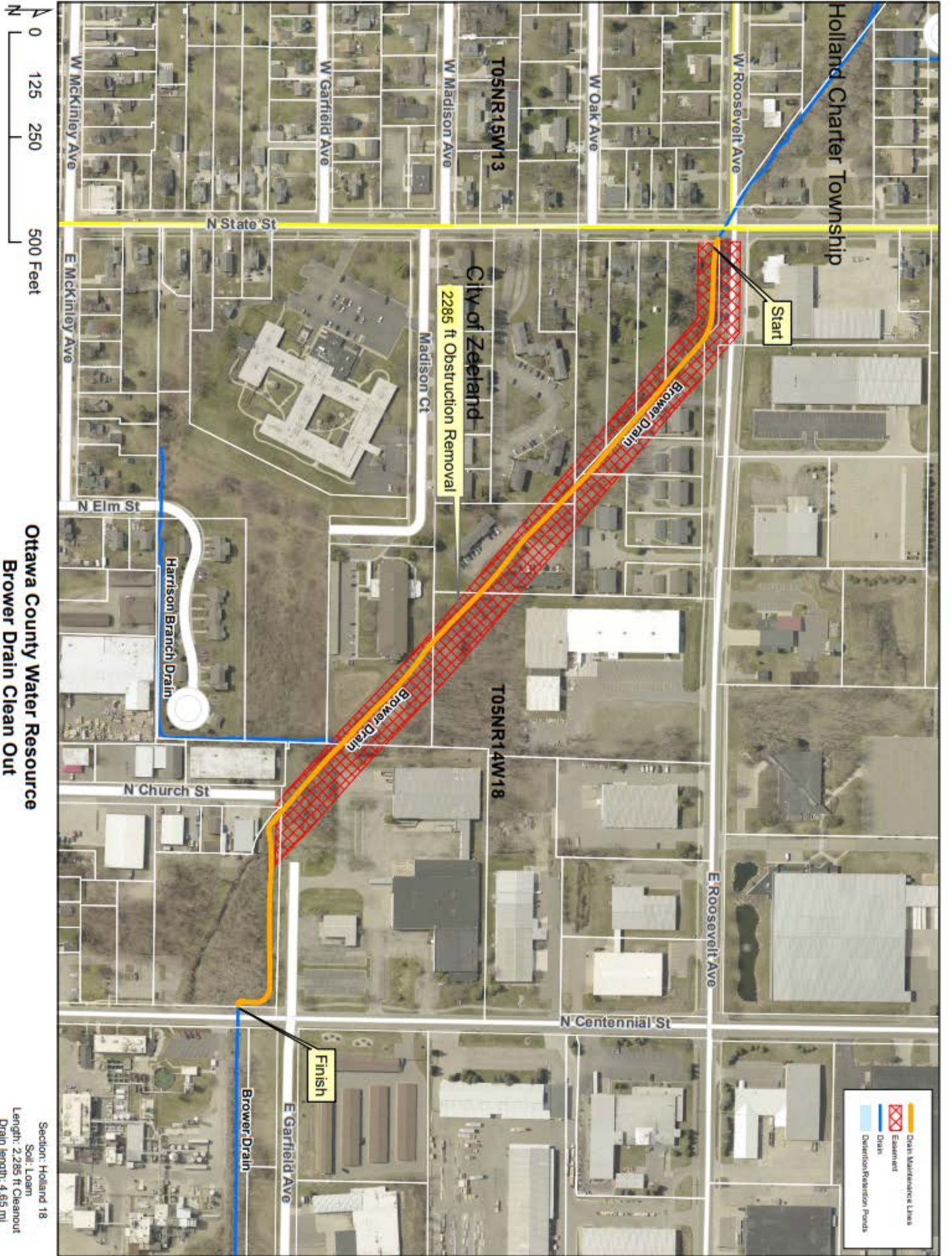
Please remove any fences, play sets or structures that are located within the drain easement as soon as possible. Also, make sure that any invisible dog fence, underground sprinkling, sump lines/tile outlet, property corner pins, etc. are marked. Care will be taken to avoid damage to anything within the drain easement; however, contractors will not be held responsible for something damaged that was not moved or marked.

Your cooperation is always appreciated in these matters. Should you have any questions, concerns, or input that you would like us to consider, feel free to contact us at 616-994-4530 or email waterresourcescommissioner@miottawa.org.

Thank You,

Chris Machiela
Drain Inspector

cc: City of Zeeland
Volker Crane Services (269) 838-9710



**Ottawa County Water Resource
Brower Drain Clean Out**

Section: Holland 18
 Soil: Loam
 Length: 2,285 ft Cleanout
 Drain length: 4.65 mi
 Easement: 0-50 ft

-  Easement
-  Drain Maintenance Lines
-  Drain
-  Obstruction Removal Ponds