



# Ottawa County **Featured Trails**

**Suggested walking routes for healthy living**



# PARKS

Healthy living is just one step away!



## PARK HOURS

March 1 - Oct 15  
7am to 10pm












Oct 16 - Feb 28  
7am to 8pm



## TRAIL TIPS

- Bring water
- Dress for the weather
- Wear comfortable walking shoes
- Wear bug repellent

## LEGEND

-  parking
-  starting point
-  1 mile trail out
-  turnaround point
-  1 mile trail back
-  3 mile trail out
-  turnaround point
-  3 mile trail back
-  viewing area
-  restroom (modern)
-  restroom (rustic)
-  picnic area
-  shelter

# HEALTH



Many of the diseases ticks carry cause flu-like symptoms, such as fever, headache, nausea, vomiting, and muscle aches. While it's a good idea to take preventive measures against ticks year-round, be extra vigilant in warmer months (April-Sept) when ticks are most active. Repel ticks with 20 to 30% DEET or 0.5% permethrin, and walk in the center of trails. After enjoying the outdoors, conduct a full-body tick check and examine gear and pets. Ticks can ride home on clothing and pets, then attach later. For more information and how to remove ticks, visit [www.cdc.gov/ticks](http://www.cdc.gov/ticks).

To find other county parks and more information, visit [www.miOttawa.org/Parks](http://www.miOttawa.org/Parks) or call (616) 786-4847.  
For information about health programs and services, visit [www.miOttawa.org/miHealth](http://www.miOttawa.org/miHealth) or call 616) 396-5266.

# Paw Paw Park

## Wetlands of the Macatawa River and Noorderloos Creek

- Paved paths, natural surface and crushed gravel trails
- Bike path (portion of the regional Macatawa Greenway Trail)
- Home to many waterfowl (including Great Blue Herons)
- Scenic overlooks, bridges, and boardwalks
- Accessible facilities (except hiking trails)
- Picnic tables (grill near picnic shelter on westside)
- 18-hole disc golf course
- Dogs allowed on a leash
- Ungroomed cross-country ski trails
- Rustic toilets
- Paved parking lot (no parking fees)

1230 Paw Paw Drive (East entrance)

1099 Paw Paw Drive, Holland, MI 49423 (West entrance)





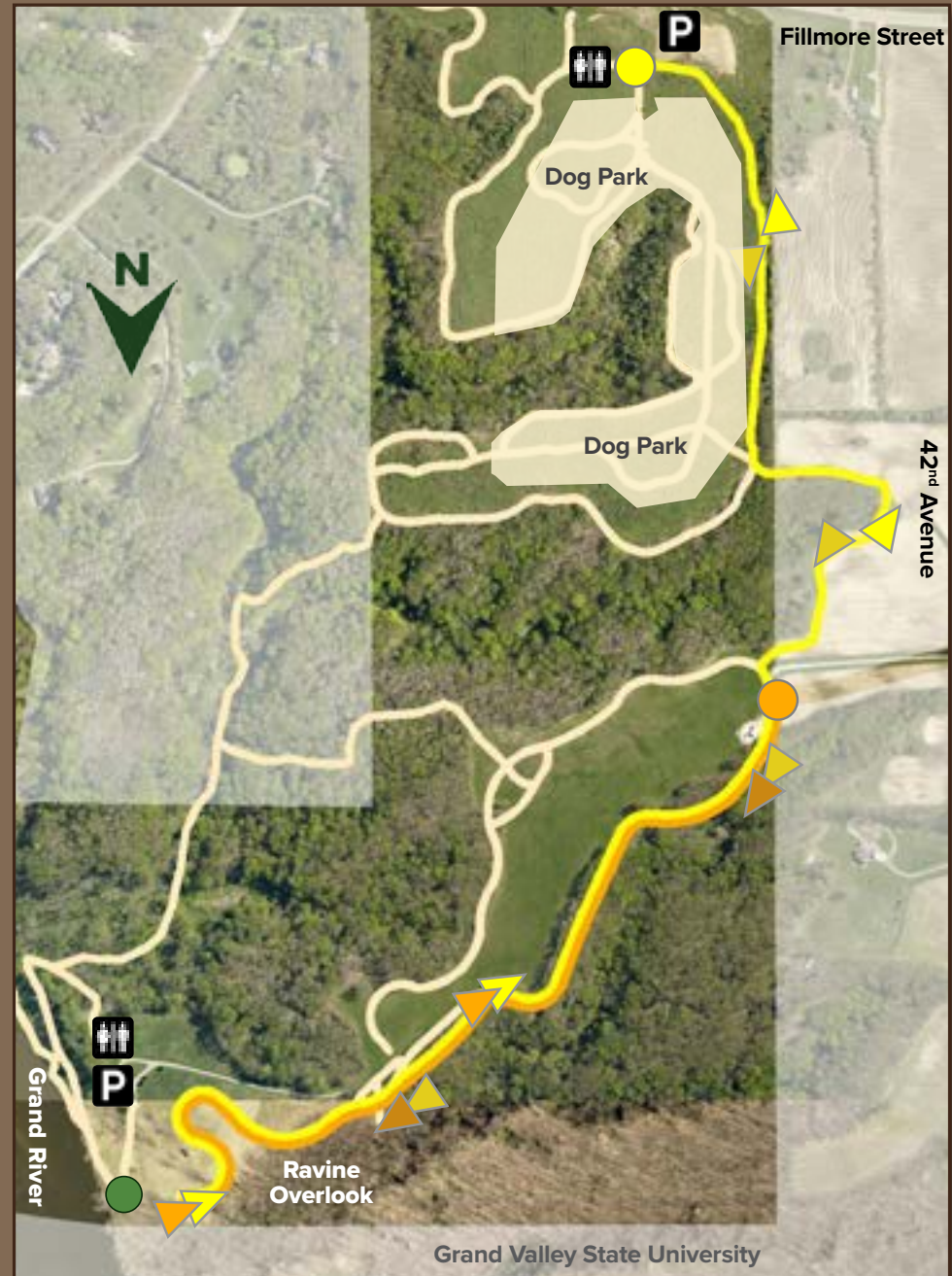
# Grand Ravines

## Deep-wooded Ravines and Views of the Grand River

- Natural surface hiking trails and paved paths
- Ravine overlook
- Fishing (state fishing laws apply)
- Grand Ravines North:
  - Public lodge (available for rent)
  - Modern restrooms
  - Paved parking lot (no parking fees)
- Grand Ravines South:
  - Enclosed dog park
  - Off-leash trails
  - Renovated historic barn
  - Paved parking lot (no parking fees)

9920 42<sup>nd</sup> Avenue (North entrance)

3991 Fillmore Street (South entrance), Jenison, MI 49428



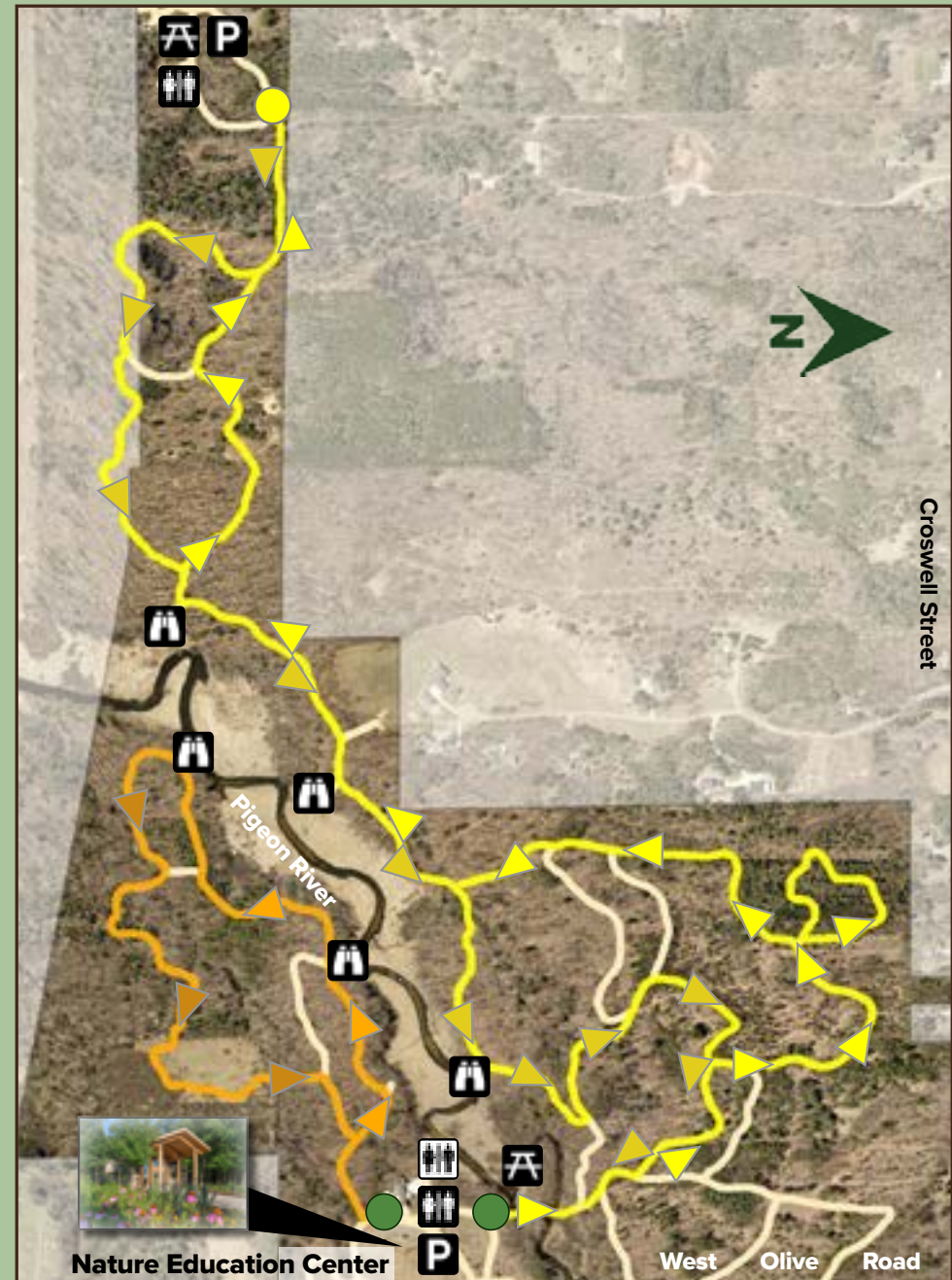


# Hemlock Crossing

## Woods and Wetlands along the Pigeon River

- Paved paths, natural surface and crushed gravel trails
- Boardwalk and a pedestrian bridge
- Scenic overlooks along the trails
- Nature Education Center  
(visitor center, wildlife viewing room, fireplace)  
Tues-Sat 9am-5pm; Sun 12-5 pm; closed Mondays
- 2 small picnic shelters with grills
- Rustic toilets and seasonal modern restrooms
- Kayak and canoe launch on Pigeon River
- Cross-country ski trails
- Snowshoe rental
- Dogs allowed on a leash
- Paved parking lot (no parking fees)

8115 West Olive Road, West Olive, MI 49460



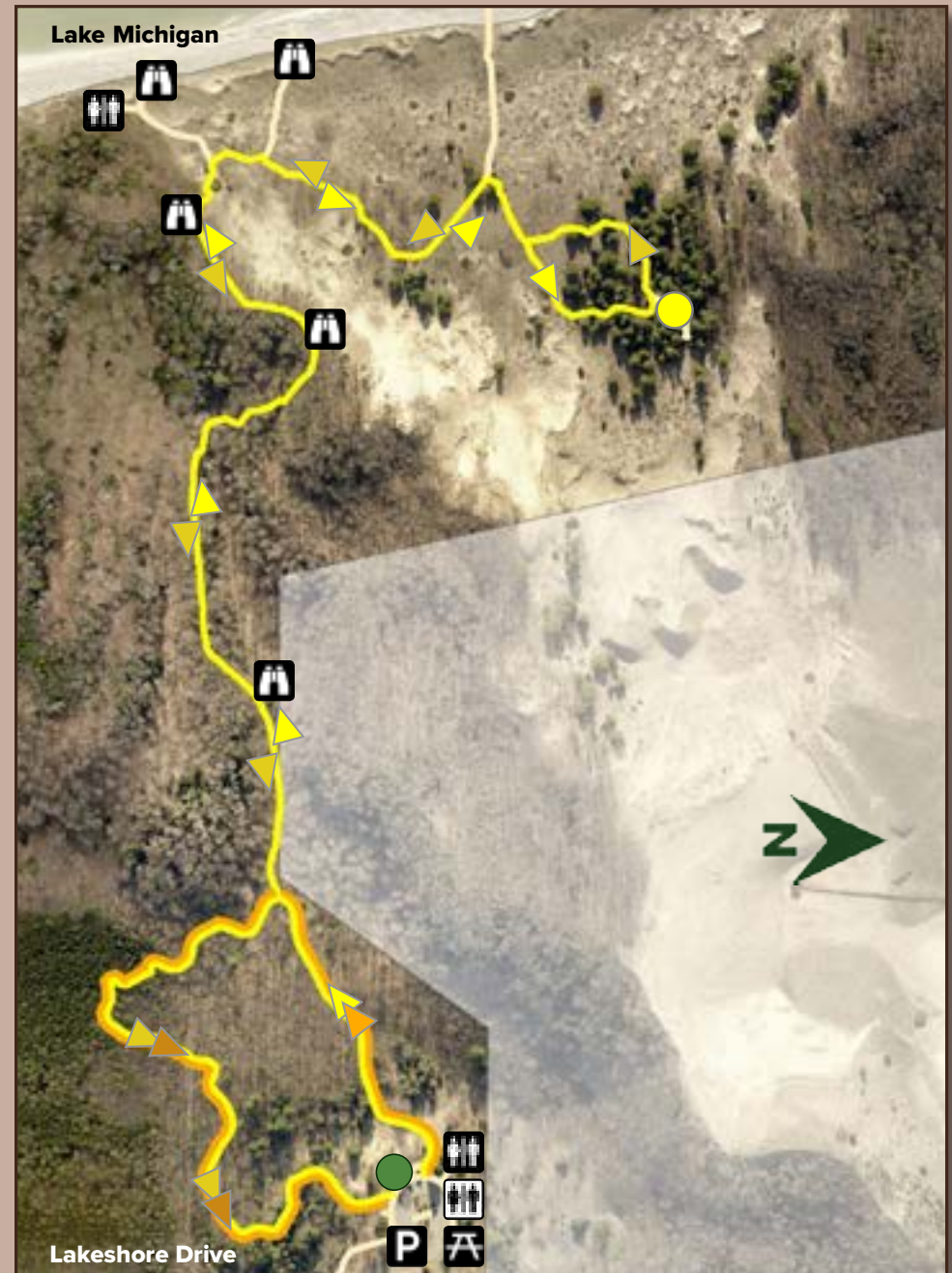


# Rosy Mound Natural Area

## High-wooded Dunes and Beach

- Home to many special plants - stay on trails
- Hiking trail - 1,000 feet of stairs up and down the dunes to the Lake Michigan shoreline
- Natural surface and dune boardwalk trails (no paved paths)
- Some wheelchair accessible trails
- All stairs are designed to be ADA accessible
- Decks with scenic views of Lake Michigan
- Interpretive signs
- Swimming beach (NO lifeguards on duty)
- Shade canopy and rustic restrooms near beach
- Picnic tables and grills
- Paved parking lot with modern restrooms (parking fee Memorial Day weekend through Labor Day)
- Dogs are NOT allowed

13925 Lakeshore Drive, Grand Haven, MI 49417



*mi*Ottawa Department of  
**Public Health**

[www.miOttawa.org/miHealth](http://www.miOttawa.org/miHealth)



Ottawa County Parks

[www.miOttawa.org/Parks](http://www.miOttawa.org/Parks)