

Ottawa County Influenza Surveillance Report

MMWR Week 02: January 9, 2021 – January 15, 2022*

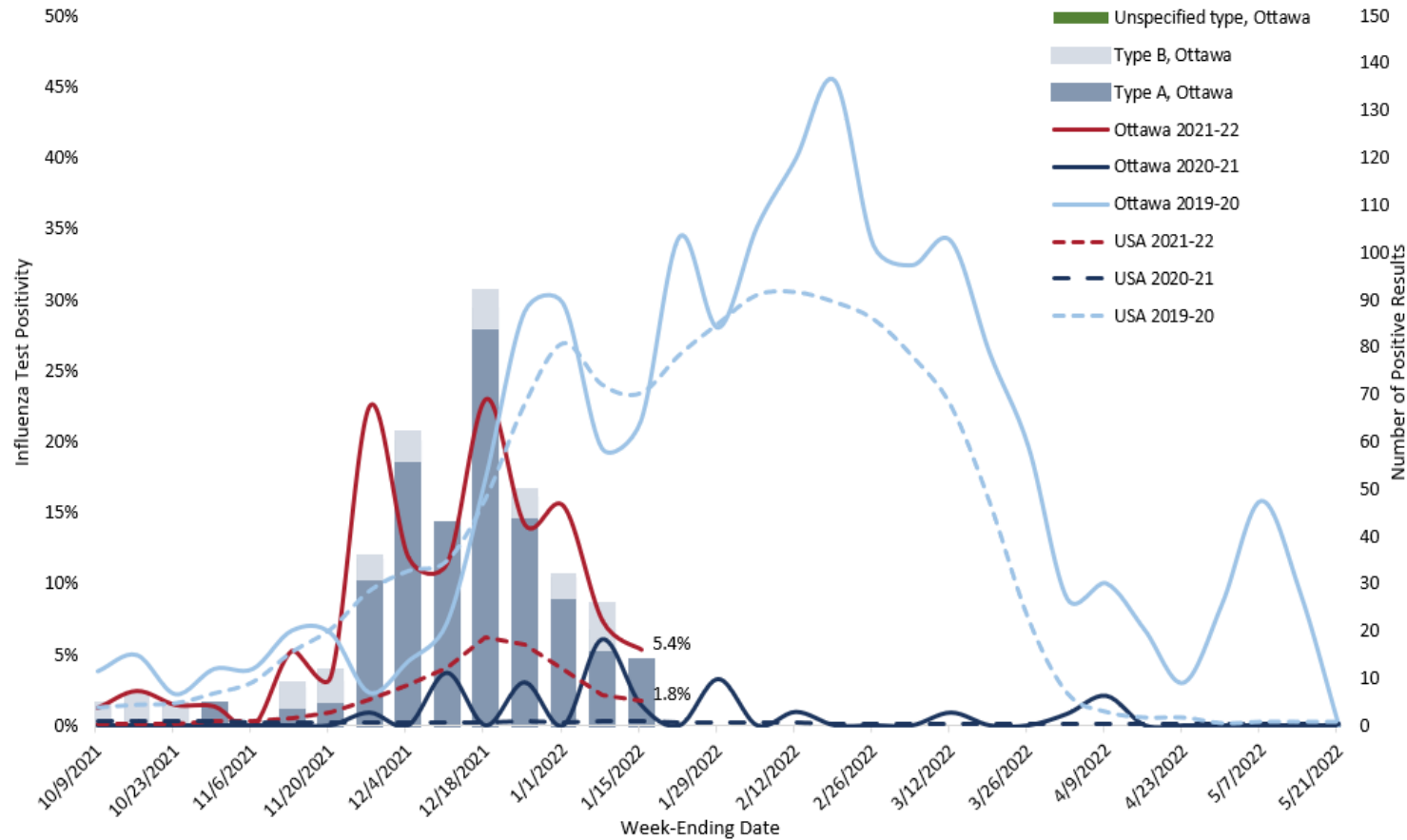


Scan code or click [HERE](#) to tell
us what you think of this report

**Morbidity and Mortality Weekly Report*

Influenza Test Positivity in the USA and Ottawa County

Figure 1: Positivity Rate of Influenza Tests by Week, Ottawa County and United States



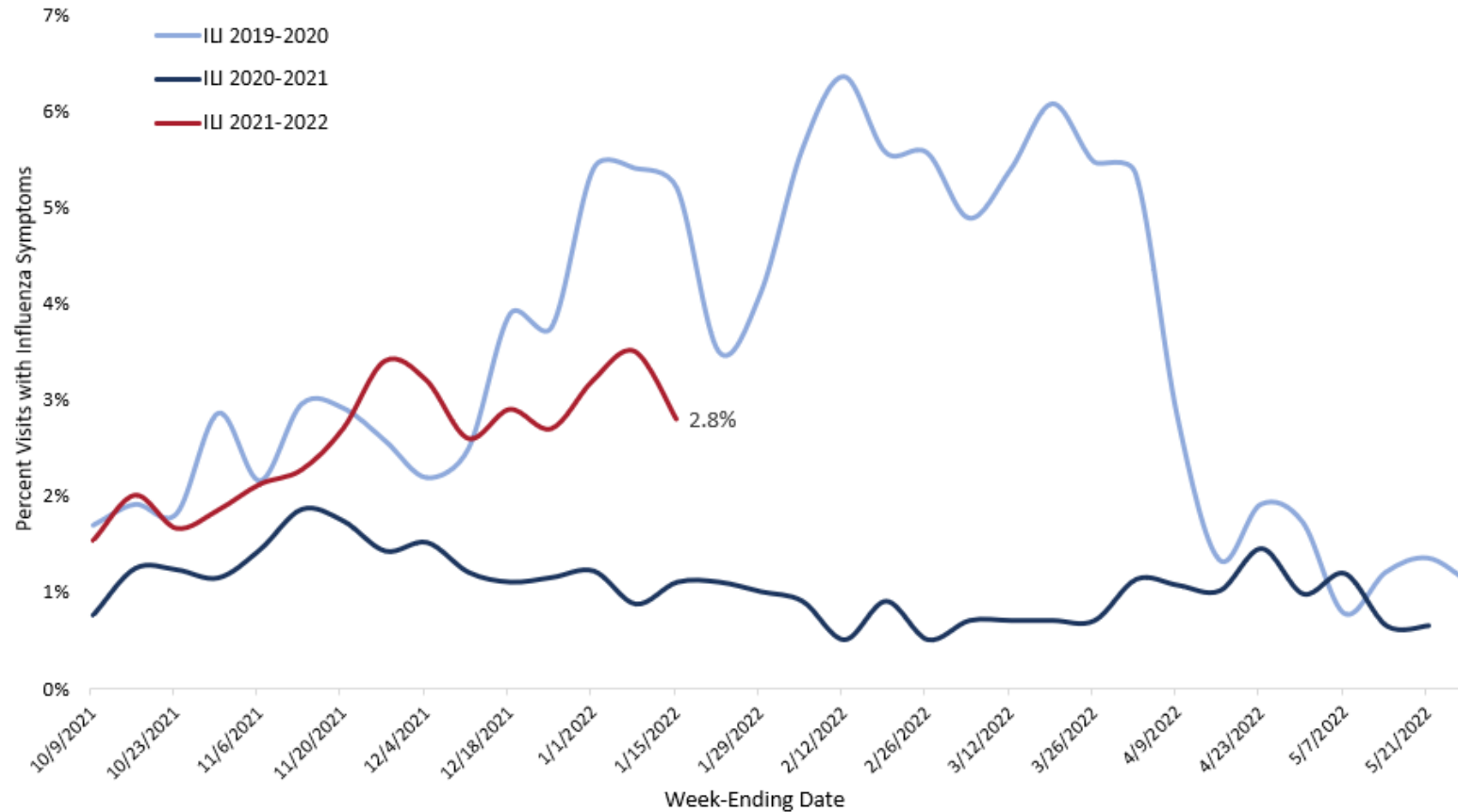
- Influenza test positivity is the percent of influenza tests conducted by reporting providers and laboratories that result positive.
- On week 2, influenza test positivity in Ottawa County was 5.4%, down from 7.4% the previous week.
- Despite the modest decrease in influenza test positivity over the last 2 weeks, current positivity remains above that reported throughout most of last season.
- Elevated influenza positivity is often an indication that influenza is circulating in the community.
- Nationwide influenza test positivity also decreased to 1.8% on week 2, also higher than that reported through last season.

MMWR Week	Week-Ending Date	Type A	Type B	Unspecified	Total Influenza	Total Tested	Positivity
47	11/27/2021	33	1	0	34	151	22.5%
48	12/4/2021	58	2	0	60	506	11.9%
49	12/11/2021	41	0	0	41	357	11.5%
50	12/18/2021	86	4	0	90	391	23.0%
51	12/25/2021	46	2	0	48	339	14.2%
52	1/1/2022	29	1	0	30	194	15.5%
1	1/8/2022	18	6	0	24	325	7.4%
2	1/15/2022	12	0	0	12	223	5.4%

Note: Several factors including changes in healthcare seeking behavior, increased awareness, hygiene practices and other non-pharmaceutical interventions, and initial public health orders in response to the COVID-19 pandemic may have contributed to the lower influenza activity reported last season, compared to previous influenza seasons.

Syndromic Surveillance for Influenza in Ottawa County

Figure 2: Percentage of Emergency Department (ED) Visits in Ottawa County with Influenza-like Illnesses (ILI).



- During week 2, Ottawa County ED visits with ILI decreased to 2.8%, from 3.5% the previous week. This proportion is also higher than that seen throughout last season, but remains below that reported at the same time 2 seasons ago.

This data reflects the proportion of patients seen in Ottawa County hospital EDs with influenza-like illnesses (ILI).*

** Influenza-like illnesses include sudden onsets of fever, cough and/or sore throat.*

MMWR Week	Week-Ending Date	ILI Visits	Total ED Visits	Percent of ED visits
47	11/27/2021	69	2030	3.4%
48	12/4/2021	69	2180	3.2%
49	12/11/2021	49	1918	2.6%
50	12/18/2021	51	1770	2.9%
51	12/25/2021	50	1820	2.7%
52	1/1/2022	66	2042	3.2%
1	1/8/2022	73	2070	3.5%
2	1/15/2022	54	1960	2.8%

Note: Several factors including changes in healthcare seeking behavior, increased awareness, hygiene practices and other non-pharmaceutical interventions, and initial public health orders in response to the COVID-19 pandemic may have contributed to the lower influenza activity reported last season, compared to previous influenza seasons.

Influenza-Like Illness (ILI) Surveillance from Reporting Schools, Childcare and Healthcare Settings

- Ottawa County Department of Public Health (OCDPH) reports on ILI activity in schools, licensed childcare, healthcare providers and long-term care facilities (LTFC) by week.
- During week 2, the proportion of ILI reported in school/childcare settings rose to 1.4% from 0.8% the previous week. With most schools resuming for the winter session, increased ILI and other communicable diseases are usually expected in these settings at this time of the year.

Figure 3: Percent ILI in Schools and Childcare ILI by Week

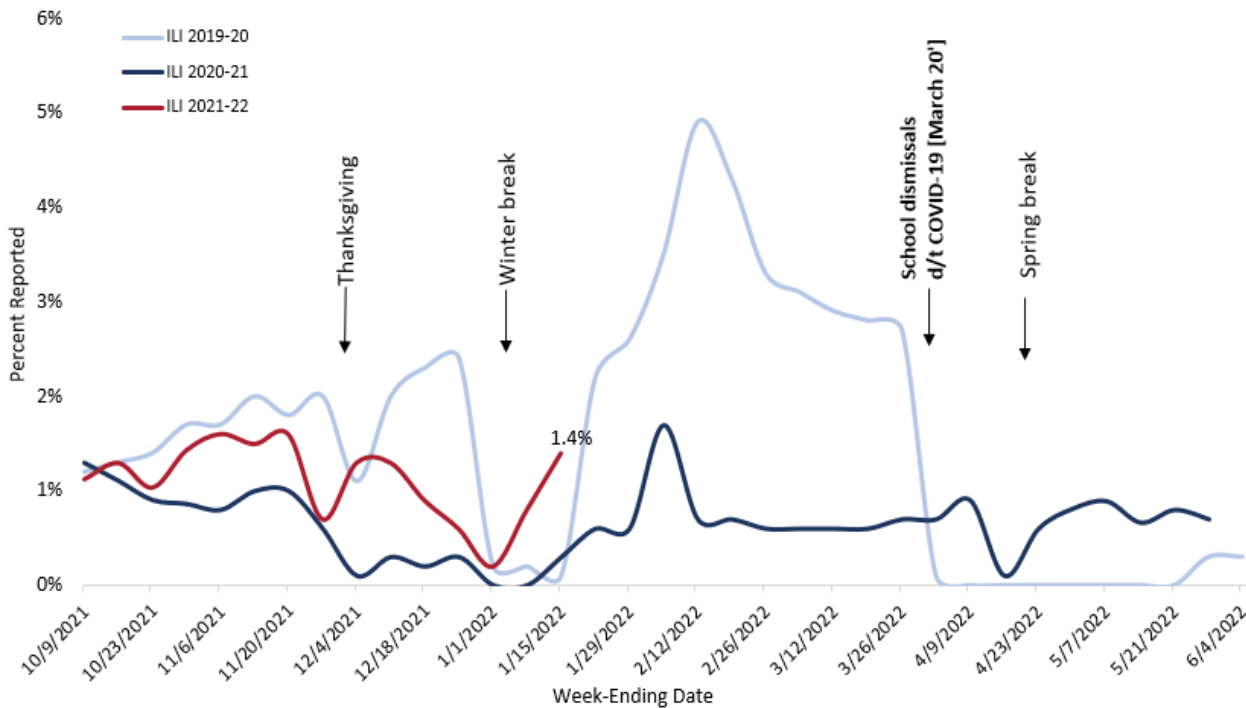
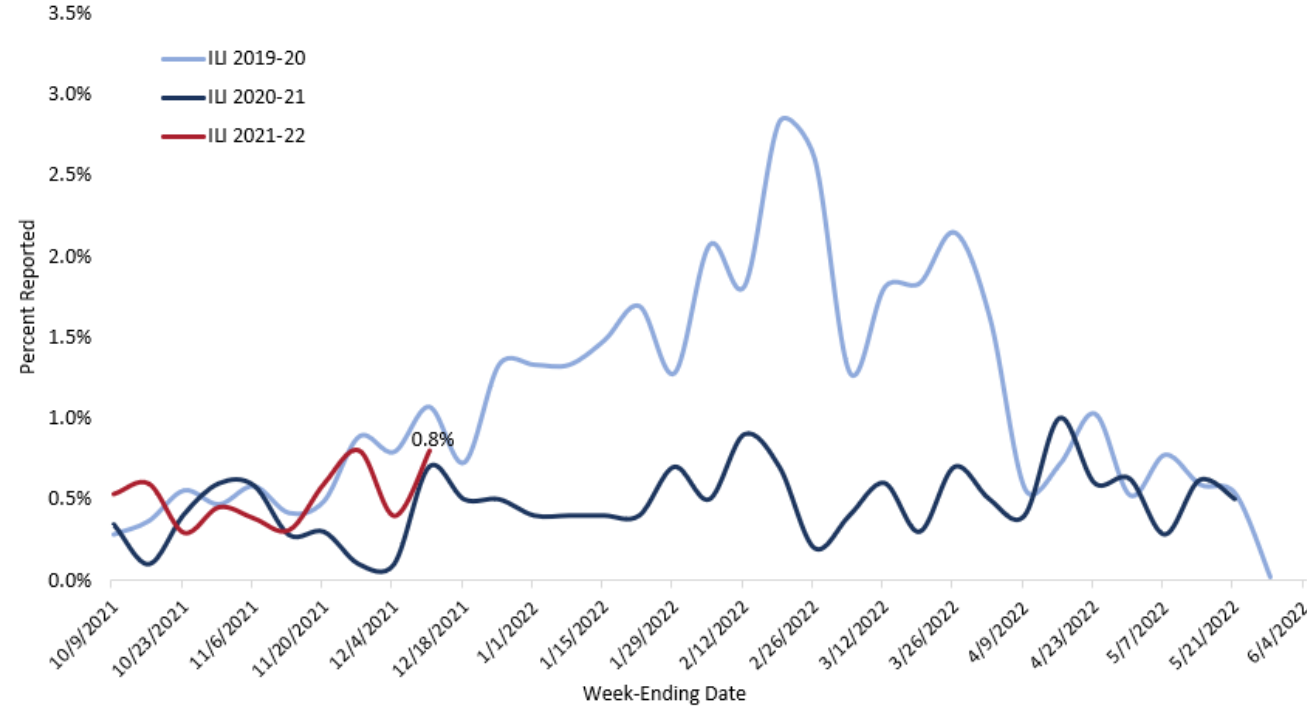


Figure 4: Percent Healthcare ILI Visits by Week



- Reported ILI in healthcare offices stood at 1.2%, similar to the 1.1% reported the previous week, staying above that reported all of last season and below that reported at a similar time 2 seasons ago.
- There was no report of influenza in LTCFs during week 2.

Note: Several factors including changes in healthcare seeking behavior, increased awareness, hygiene practices and other non-pharmaceutical interventions, initial public health orders in response to the COVID-19 pandemic and absences for other reasons including COVID-19 quarantine and isolation may contribute to the lower influenza activity reported last season, compared to previous influenza seasons.

Influenza Sentinel Surveillance

- So far this season, there have been reports of **influenza A (H3)** circulation from an influenza sentinel surveillance site in Ottawa County.

Influenza-Associated Pediatric Mortality

- Nationally, **five (5) influenza-associated pediatric deaths** have been reported thus far for the 2021-2022 flu season. No influenza-associated pediatric death has been reported in Michigan so far this season. There have also been no reports of influenza-associated pediatric deaths in Ottawa County.

Influenza Vaccine Coverage

- The best way to prevent influenza is by getting the influenza vaccine each year. Ottawa County has seen improvements in influenza vaccine coverage over the last 3 influenza seasons. The table below reflects total vaccination coverage rate in Ottawa County and statewide (MI) over the last 3 influenza seasons and through January 1 this season.

	2018-19 Season	2019-20 Season	2020-21 Season	2021-22 Season (YTD)
Ottawa County	39%	40.2%	42.9%	36.5%
Michigan	30.3%	31.6%	34.3%	28.7%
Healthy People 2020 Target	70%	70%	70%	70%

YTD = Year to date

Preventing the flu/influenza

- Get the flu vaccine
- Stay home when sick and limit contact with other people
- Wash hands frequently with soap and water
- Cover coughs and sneezes

[Click here to learn more about preventive steps.](#)

Useful Links and Resources

- National influenza surveillance data are available at: <https://www.cdc.gov/flu/weekly/index.htm>
- Statewide influenza surveillance data are available at: https://www.michigan.gov/documents/MIFluFocus_1_5_06_146893_7.pdf
- State and county level influenza vaccination coverage data are available at: <https://www.michigan.gov/flu/0,6720,7-321-101697---,00.html>
- Disease burden of flu in the United States: <https://www.cdc.gov/flu/about/burden/index.html>
- Preventing Seasonal Flu: <https://www.cdc.gov/flu/prevent/index.html>
- Season flu vaccine effectiveness studies: <https://www.cdc.gov/flu/vaccines-work/effectiveness-studies.htm>
- Flu vaccine finder: <https://www.vaccines.gov/find-vaccines/>
- CDC health alert on increasing seasonal influenza activity especially among young adults in college and university settings. November 24, 2021: <https://www.emergency.cdc.gov/han/2021/han00458.asp>
- National Influenza Vaccination Week, December 5-11 : https://content.govdelivery.com/attachments/MIDHHS/2021/12/06/file_attachments/2013760/Flu%20Immunization%20Week.pdf

Note: *This surveillance report is based on preliminary data. Charts and figures are subject to change as the data are updated.*

Compiled by Derick N. Chia, MPH
Epidemiologist at OCDPH
Email: dchia@miottawa.org