

Ottawa County Influenza Surveillance Report

MMWR Week 45: November 06, 2022 – November 12, 2022*

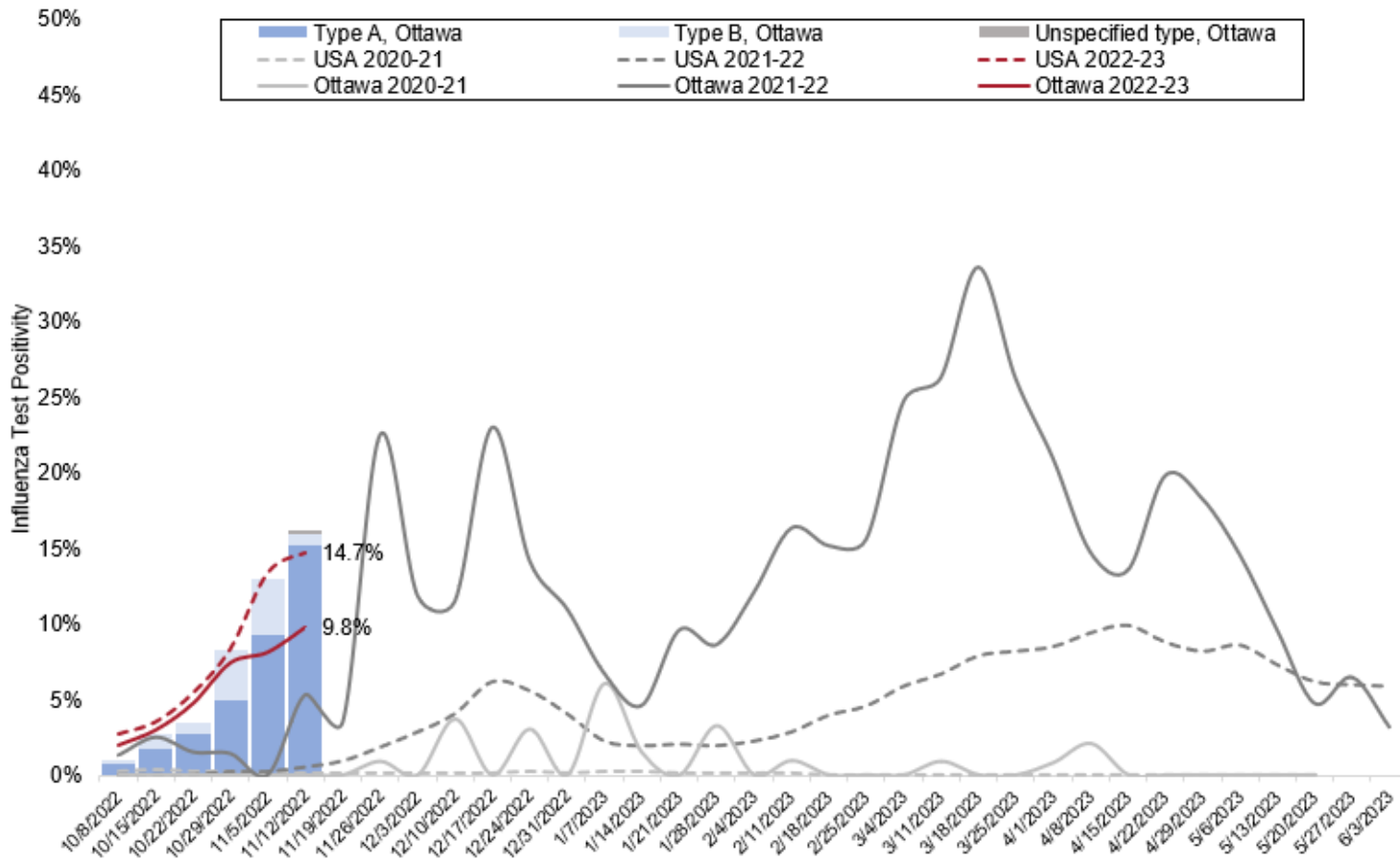


Scan code or click [HERE](#) to tell
us what you think of this report

**Morbidity and Mortality Weekly Report*

Influenza Test Positivity in the USA and Ottawa County

Figure 1: Positivity Rate of Influenza Tests by Week, Ottawa County and United States



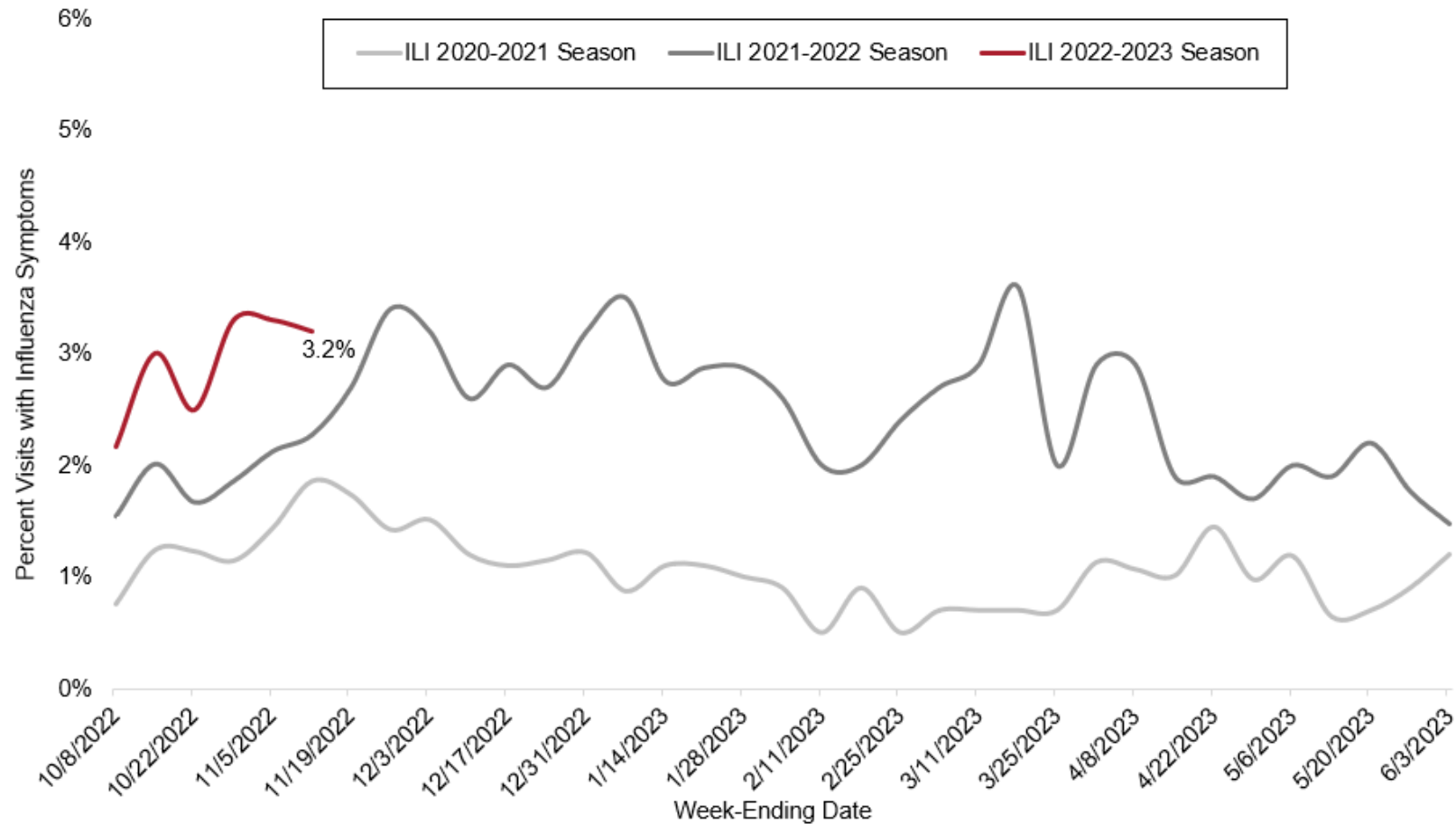
- Influenza positivity is the percent of influenza tests conducted by reporting providers and laboratories that result positive.
- During week 45, influenza test positivity in Ottawa County increased to 9.8% from 8.2% the previous week. Influenza testing also increased slightly from the previous week (4%).
- Current influenza positivity estimate in Ottawa County is higher than that reported at a similar time over the last two influenza seasons.
- Elevated influenza positivity is often an indication that influenza is circulating in the community. Current influenza positivity in Ottawa County is elevated.
- Seasonal influenza activity is elevated across the country. Test positivity in the US increased to 14.7% from 13.4% the previous week.

Week-Ending Date	Type A	Type B	Unspecified	Total Influenza	Total Tested	Positivity
10/8/2022	3	1	0	4	200	2.0%
10/15/2022	7	4	0	11	366	3.0%
10/22/2022	11	3	0	14	294	4.8%
10/29/2022	20	13	0	33	443	7.4%
11/5/2022	37	15	0	52	638	8.2%
11/12/2022	61	3	1	65	664	9.8%

Note: Several factors including changes in healthcare seeking behavior, increased awareness, hygiene practices and other non-pharmaceutical interventions, and initial public health orders in response to the COVID-19 pandemic may have contributed to the lower influenza activity reported during the 2020 influenza season.

Syndromic Surveillance for Influenza in Ottawa County

Figure 2: Percentage of Emergency Department (ED) Visits in Ottawa County with Influenza-like Illnesses (ILI).



- This data reflects the proportion of patients seen in Ottawa County hospital EDs with influenza-like illnesses (ILI)*.
- During week 45, Ottawa County ED visits with ILI was 3.2%, fairly similar to the 3.3% reported the previous week.
- This proportion is higher than that seen throughout most of last season, and well over that reported at a similar time during the last two seasons.

* Influenza-like illnesses include sudden onsets of fever, cough and/or sore throat.

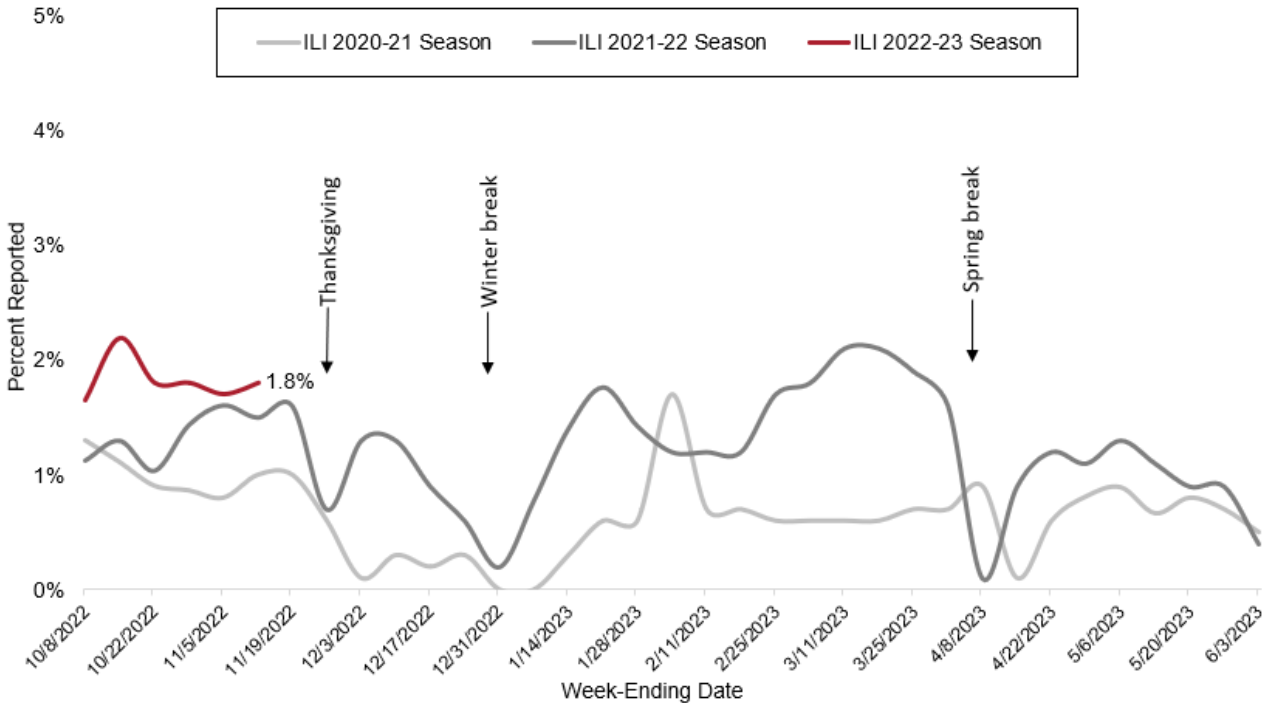
MMWR Week	Week-Ending Date	ILI Visits	Total ED Visits	Percent of ED visits
40	10/8/2022	47	2163	2.2%
41	10/15/2022	62	2059	3.0%
42	10/22/2022	54	2127	2.5%
43	10/29/2022	75	2245	3.3%
44	11/5/2022	73	2227	3.3%
45	11/12/2022	77	2400	3.2%

Note: Several factors including changes in healthcare seeking behavior, increased awareness, hygiene practices and other non-pharmaceutical interventions, and initial public health orders in response to the COVID-19 pandemic may have contributed to the lower influenza activity reported during the 2020 influenza season.

Influenza-Like Illness (ILI) Surveillance from Reporting Schools, Childcare and Healthcare Settings

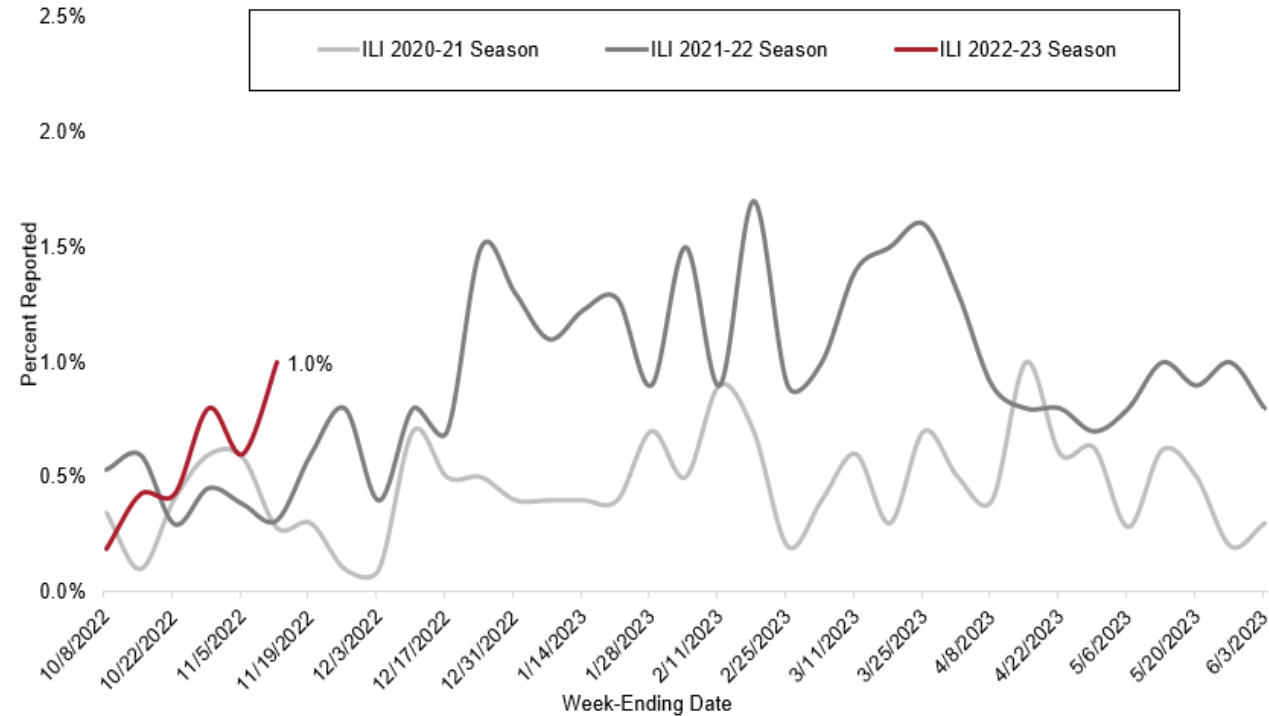
- During week 45, the proportion of ILI reported in school/childcare settings was 1.8%, also staying fairly similar to the 1.7% reported the previous week.
- This proportion exceeds that reported throughout most of last season, and well over that reported at a similar time during the last two seasons.

Figure 3: Percent ILI in Schools and Childcare ILI by Week



Note: Several factors including changes in healthcare seeking behavior, increased awareness, hygiene practices and other non-pharmaceutical interventions, initial public health orders in response to the COVID-19 pandemic and absences for other reasons including COVID-19 quarantine and isolation may contribute to the lower influenza activity reported during the 2020 influenza season.

Figure 4: Percent Healthcare ILI Visits by Week



- Reported ILI in healthcare offices increased sharply to 1.0% from 0.6% reported the previous week. This proportion is elevated compared to this same time over the last two seasons.
- There was **one (1) influenza outbreak** reported in a long-term care setting during week 45.

Influenza-Associated Pediatric Mortality

- Nationally, **two (2) influenza-associated pediatric deaths** were reported to the Centers for Disease Control and Prevention on **week 45**, making a **total of seven (7) influenza-associated pediatric deaths this season**. No influenza-associated pediatric deaths have been reported in Michigan so far this season. There have also been no reports of influenza-associated pediatric deaths in Ottawa County. *(Note that other measures of disease severity including influenza-associated hospitalizations and complications are not reported in these data).*

Influenza Vaccine Coverage

- The best way to prevent influenza is by getting the influenza vaccine each year. Over the past four influenza seasons, vaccination coverage in Ottawa County hovered around 40%. The table below reflects total vaccination coverage rate in Ottawa County and statewide (MI) over the last four influenza seasons and through November 5 this season.

	2018-19 Season	2019-20 Season	2020-21 Season	2021-22 Season	2022-23 Season (YTD)
Ottawa County	39%	40.2%	42.9%	40.1%	24.0%
Michigan	30.3%	31.6%	34.3%	31.8%	19.7%
Healthy People 2020 Target	70%	70%	70%	70%	70%

YTD = Year to date

Preventing the flu/influenza

- Get the flu vaccine
- Stay home when sick and limit contact with other people
- Wash hands frequently with soap and water
- Cover coughs and sneezes

[Click here to learn more about preventive steps.](#)

Useful Links and Resources

- National influenza surveillance data are available at: <https://www.cdc.gov/flu/weekly/index.htm>
- Statewide influenza surveillance reports are available at: https://www.michigan.gov/flu/surveillance/past-michigan-flu-focus-surveillance-reports?utm_campaign=&utm_medium=email&utm_source=govdelivery
- State and county level influenza vaccination coverage data are available at: <https://www.michigan.gov/flu/flu-dashboard>
- Disease burden of flu in the United States: <https://www.cdc.gov/flu/about/burden/index.html>
- Preventing Seasonal Flu: <https://www.cdc.gov/flu/prevent/index.html>
- Season flu vaccine effectiveness studies: <https://www.cdc.gov/flu/vaccines-work/effectiveness-studies.htm>
- Flu vaccine finder: <https://www.vaccines.gov/find-vaccines/>

*Compiled by Derick N. Chia, MPH
Epidemiologist at OCDPH
Email: dchia@miottawa.org*