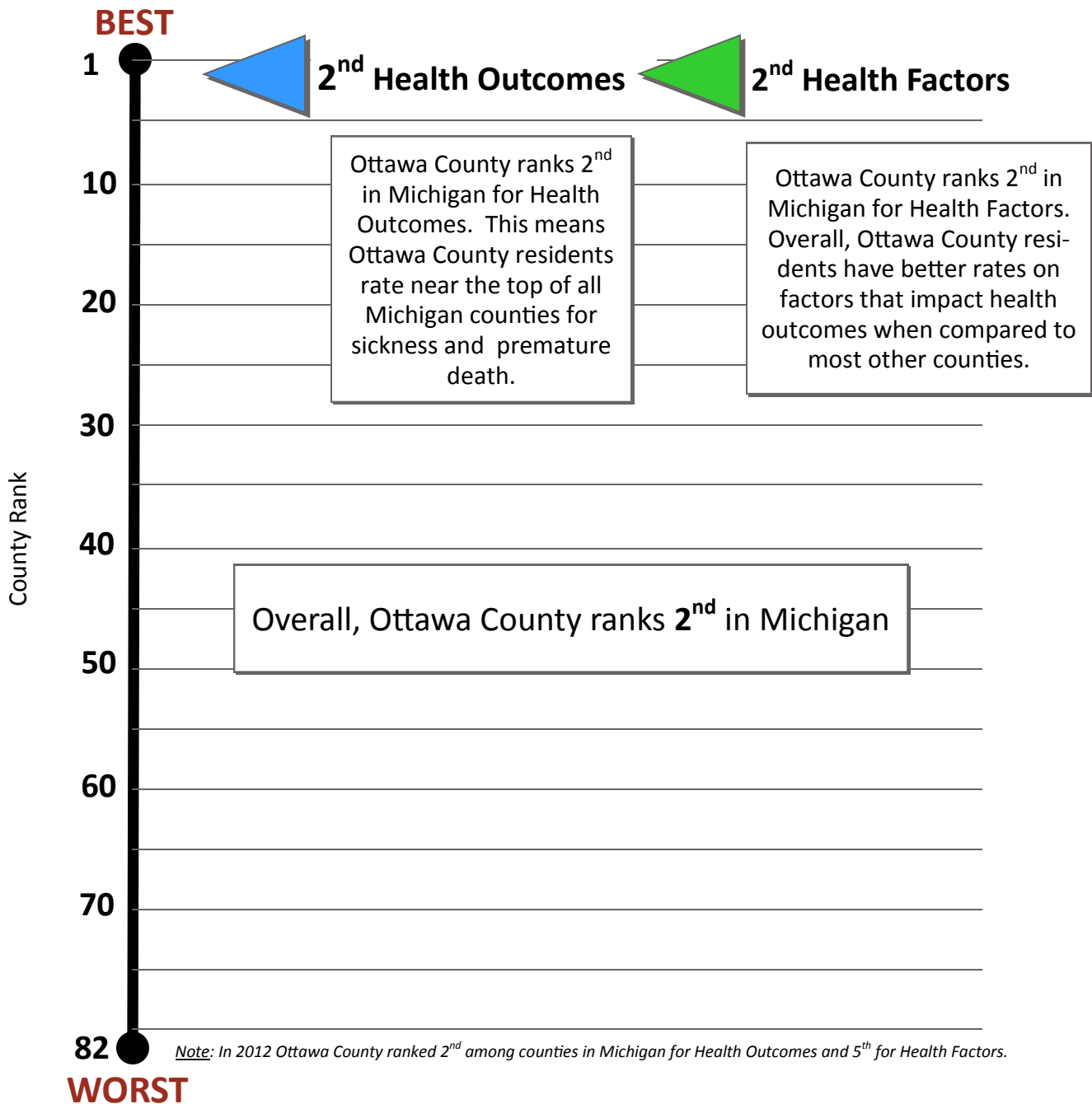




2013 County Health Rankings Report OTTAWA COUNTY



Note: Counties in Michigan were ranked from 1 (best) to 82 (worst), as Keweenaw County was not ranked.



County Health Rankings
Mobilizing Action Toward Community Health
www.countyhealthrankings.com

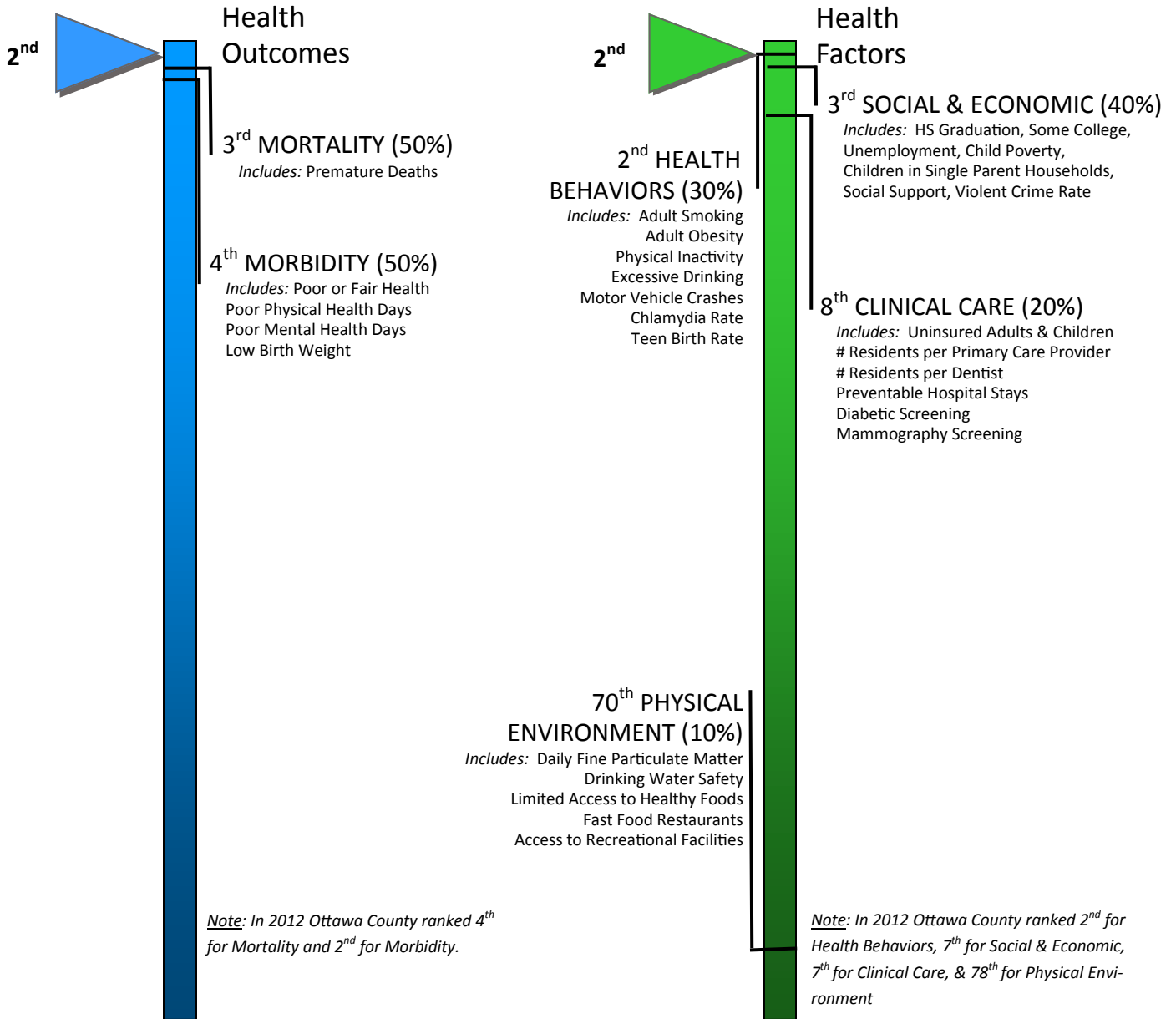
County Health Rankings is a program of the Robert Wood Johnson Foundation and the University of Wisconsin Population Health Institute.

NOTE: Extensive and detailed information about each data source is available at www.countyhealthrankings.org

Template developed by Anne Barna, MA, Health Analyst for Barry-Eaton District Health Department

Detailed Rankings OTTAWA COUNTY

Each of the health ranking main categories is comprised of two or more sub-rankings which are themselves composed of a combination of different indicators. Please see www.countyhealthrankings.org for an interactive and detailed presentation of the data.



Ottawa County ranks 2nd in Michigan for Health Outcomes. Our sub-ranking is higher for premature deaths than for sickness.

Ottawa County ranks 2nd in Michigan for Health Factors. The sub-rankings address a variety of health factors that influence health outcomes. The sub-groups comprise differing proportions of the final rank; health behaviors (30%) have a greater influence than the physical environment (10%), for example.

2013 Ottawa SNAPSHOT

		Ottawa County	Target Value	Michigan	Rank (of 82)
Health Outcomes					2 ⇔
Mortality					3 ↑
Premature death	(50%)	4,734	5,317	7,254	
Morbidity					4 ↓
Poor or fair health	(10%)	9%	≤ 10%	14%	
Poor physical health days	(10%)	2.6	≤ 2.6	3.5	
Poor mental health days	(10%)	2.8	≤ 2.3	3.7	
Low birth weight	(20%)	6.4%	≤ 6.0%	8.4%	
Health Factors					2 ↑
Health Behaviors					2 ⇔
Adult smoking	(10%)	16%	≤ 13%	20%	
Adult obesity	(7.5%)	25%	≤ 25%	32%	
Physical inactivity	(2.5%)	21%	≤ 21%	25%	
Binge & heavy drinking	(2.5%)	18%	≤ 7%	19%	
Motor vehicle crash death rate	(2.5%)	10	≤ 10	11	
Chlamydia rate	(2.5%)	187	≤ 92	500	
Teen birth rate	(2.5%)	20	≤ 21	32	
Clinical Care					8 ↓
Uninsured adults/children	(5%)	12%	≤ 11%	14%	
Primary care provider ratio	(3%)	1,772:1	≤ 1,067:1	1,271:1	
Dentist ratio	(2%)	2,128:1	≤ 1,516:1	≤ 1,626:1	
Preventable hospital stays	(5%)	37	≤ 47	70	
Diabetic screening	(2.5%)	88%	≥ 90%	86%	
Mammography screening	(2.5%)	72%	≥ 73%	67%	
Social & Economic Factors					3 ↑
High school graduation rate	(5%)	84%	N/A	74%	
Some college	(5%)	68%	≥ 70%	64%	
Unemployment rate	(10%)	8.3%	≤ 5%	10.3%	
Children in poverty	(10%)	12%	≤ 14%	25%	
Inadequate social support	(2.5%)	14%	≤ 14%	20%	
Children in single-parent hh	(2.5%)	19%	≤ 20%	33%	
Violent crime or homicide rate	(5%)	176	≤ 66	497	
Physical Environment					70 ↑
Air pollution-particulate matter days (2%)		10.7	≤ 8.8	9.9	
Drinking water safety	(2%)	0%	0%	1%	
Limited access to healthy foods	(2%)	9%	9%	6%	
Fast food restaurants	(2%)	54%	≤ 27%	49%	
Access to recreational facilities	(2%)	9	≥ 16	9	