

# Van Buren Street Dunes

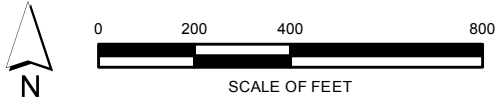
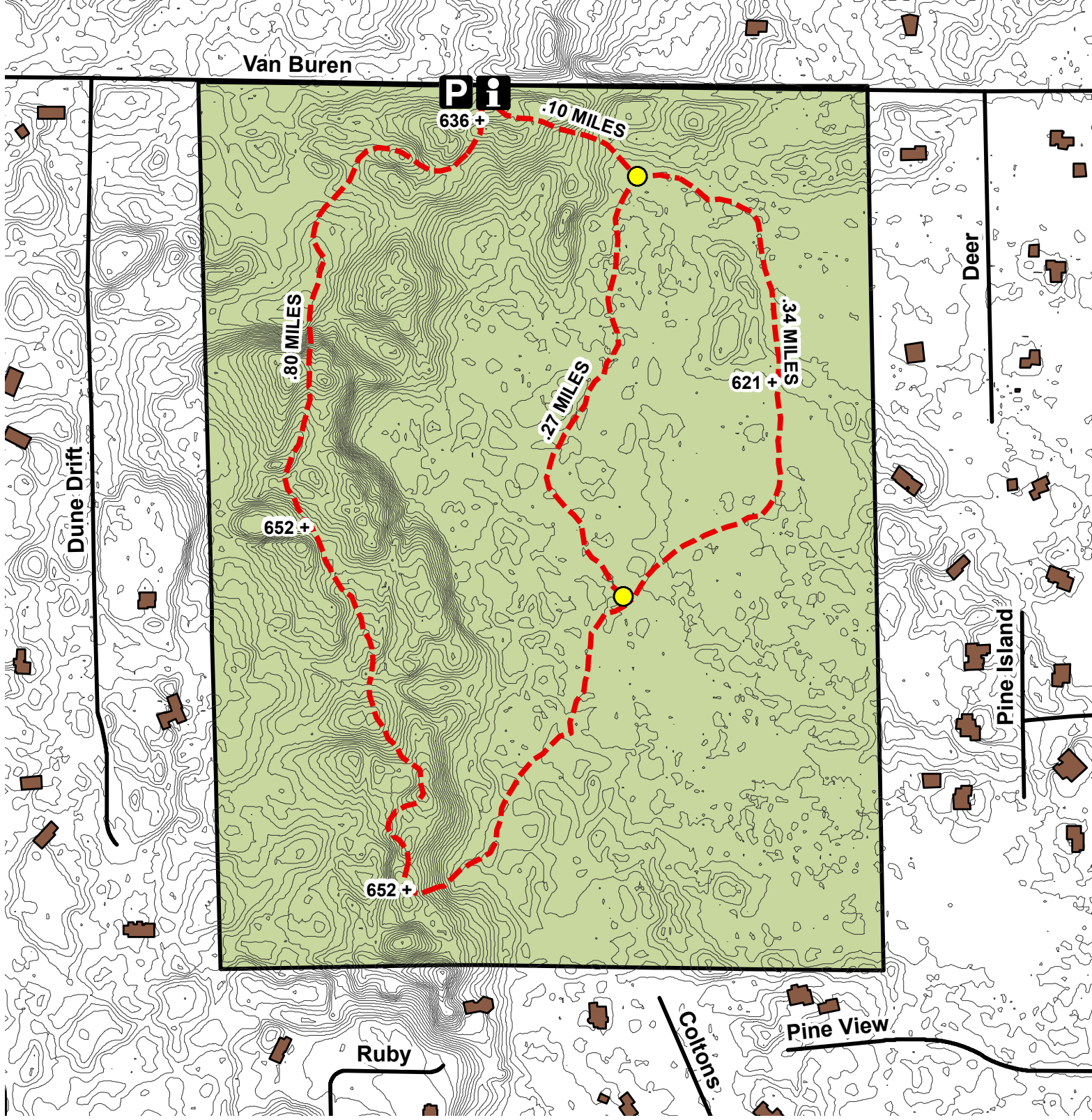
Port Sheldon Township

**LEGEND**

- PARKING (ROADSIDE)
- INFORMATION KIOSK
- TRAILS
- 2' CONTOUR LINES

**PARK USER INFORMATION**

- No alcohol is permitted
- No motor vehicles beyond parking lot
- Bicycles are NOT allowed on trails
- Dogs are allowed off leash
- No camping or fires
- All Ottawa County Open Space rules & regulations are in effect on park property



# Van Buren Street Dunes

16780 VanBuren Street  
West Olive, MI 49460

---

This Open Space Land is 120 acres of inland dunes with recently-thinned red pine plantations and scattered pockets of deciduous forest. There are no designated trails or restroom facilities.

## Facilities and Activities

- Small parking area and information kiosk
- Off-trail hiking and cross-country skiing
- Dogs are allowed on or off leash

## Hunting

Firearm and archery hunting are permitted at Van Buren Street Dunes.

## Park Hours

Van Buren Street Dunes is open year-round, however, the parking area is not plowed in winter. Open Space lands are open from 5 a.m. to 10 p.m.

## Fees

There are no park fees.

## Rules and Regulations

The following activities are prohibited at Van Buren Street Dunes:

- Trapping
- Fires
- Camping
- Bicycles
- All motorized vehicles
- Horses

## Directions

Van Buren Street Dunes is located in Port Sheldon Township. The parking area is on Van Buren Street between Lakeshore and 164th Avenues.

**For emergencies, call 911.**



### **Ottawa County Parks & Recreation Commission**

12220 Fillmore Street, West Olive, MI 49460

Phone: (616) 738-4810

Email: [parks&rec@miottawa.org](mailto:parks&rec@miottawa.org)

Website: <http://www.miottawa.org/parks>