

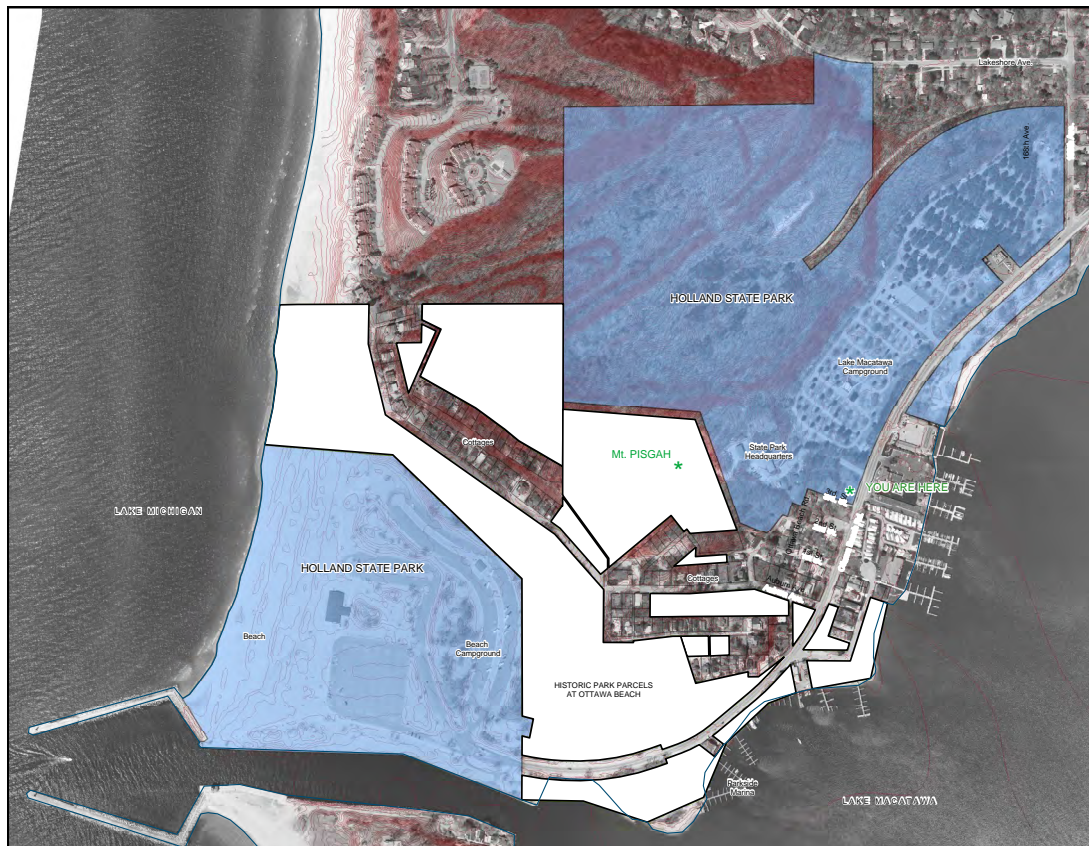
Lake Macatawa Shoreline Improvements

At Historic Ottawa Beach

Park Township

Project Description: Public access improvements to the shoreline of Lake Macatawa are the final steps in completing the park master plan for the Historic Ottawa Beach Parks, a project which has been the focus of county and state park planners for over two decades.

Historic Ottawa Beach Parks, previously known as “Park 12”, consists of 12 park parcels that were deeded for park purposes in 1886 when the West Michigan Park Association (WMPA) was first platted. These twelve parcels of land include 750’ of Lake Michigan beach plus beautiful wooded dunes interspersed between the historic cottages of the WMPA and the two units of the Holland State Park in addition to the 2400’ of Lake Macatawa shoreline.



After decades of disputes about ownership of the park parcels, the legal controversies were resolved in 2005 with the park master plan serving as a part of the agreement. Since that time Ottawa County Parks has been steadily implementing portions of the plan including the Mt. Pisgah Dune stairs, a separated bike path along Ottawa Beach Road, and various smaller projects to improve public and resident access.

Through this project, Ottawa County Parks proposes to construct the final segment of a waterfront walkway along Lake Macatawa providing opportunities for the public to access the waterfront and enjoy scenic views and opportunities for a range of recreation experiences. The new walkway segment will provide the link between The Black Lake Boardwalk parking area and overlook decks on the east to the Holland Harbor Fishing Access on the west. This completed project will provide a dramatic new recreation attraction in one of Michigan busiest recreational corridors connecting to Holland State Park’s Lake Michigan beach.



Holland Harbor Fishing Access



Black Lake Boardwalk

The project will be complemented and enhanced by two other projects being studied and planned on this section of shoreline. First, the renovation of the historic red brick ‘pumphouse’ building into a historic museum will provide another point of interest along the pathway if private fundraising efforts are successful. Second, improvements to the existing Parkside Marina lease area are also being studied to determine ways to improve public access and the aesthetics.



Proposed pumphouse improvements looking from south



Pumphouse Museum Plan

Project Updates:

01.18.13 Coordination with the Road Commission and Parkside Marina continues. Our design consultant is refining the plans based this input and the final topographic survey. A public meeting to discuss the project has been delayed until resolution of the issues with the marina owner have been finalized as well as submittal of the plans to the township and state for review and approval.

11.28.12 Coordination with the Road Commission and Parkside Marina is in progress. Our design consultant is refining the plans based this input and the final topographic survey.

10.31.12 M. C. Smith and Associates has been chosen as our design consultant. Topographic survey work has been completed, and detailed site analysis and design development is in progress.

08.22.12 Grant funds have been appropriated by the state. RFPs from potential consultants will be presented at the next Park Commission Meeting

07.25.12 We are awaiting appropriation of grant funds by the Michigan legislature. Topographic survey work has been started, and an RFP has been sent to potential consultants.

04.29.12 Grant funding for the waterfront walkway has been recommended by the Michigan Natural Resources Trust Fund in the amount of \$300,000. Ottawa County Parks will match this with another \$300,000. The project will not move forward until this money is appropriated by the Michigan legislature and signed by the governor.