



Monitoring Data & Grand Haven Beaches

Dr. Shannon Briggs

517-284-5526

Briggss4@michigan.gov

What Is Going On?

Clean Water Act (includes BEACH Act)

§ Congress

United States Environmental Protection Agency

Michigan Department of Environmental Quality

Ottawa County Health Department

E. coli data



Grand River

Sh Harbor Dr

Emmett

Memory Ln

Prosper

Sh Harbor Dr

Edwa

Highland Dr

http://www.deq.state.mi.us/beach/

Welcome to the Michigan BeachGuard System, a public resource provided by Michigan DEQ for information on Michigan beach water quality sampling results and beach advisories and closures.



Michigan Beaches

1222 Public Beaches

509 Private Beaches

Closures and Advisories

No Current Closures or Advisories



Search Results

19 Records Displayed

Rows to Display: Export:

<u>Waterbody/Location Name</u>	<u>Description</u>	<u>County</u>
Crockery Lake - Grose Park	Conklin	Ottawa
Georgetown Lake - Georgetown Community Park	end of 8th Avenue	Ottawa
Lake Macatawa - Dunton Park		Ottawa
Lake Macatawa - Fallen Leaf Park		Ottawa
Lake Macatawa - Holland State Park	Holland	Ottawa
Lake Michigan - Grand Haven City Beach	Grand Haven	Ottawa
Lake Michigan - Grand Haven State Park	Grand Haven	Ottawa
Lake Michigan - Holland State Park	Holland	Ottawa
Lake Michigan - Kirk Park	At end of Filmore and Lakeshore Dr.	Ottawa
Lake Michigan - Kouw Park		Ottawa
Lake Michigan - Mountain Beach	Mountain Beach	Ottawa
Lake Michigan - North Beach Park	Ferrysburg	Ottawa
Lake Michigan - P.J. Hoffmaster State Park-Shoreline Beach	PJ Hoffmaster State Park shoreline beach south of County line	Ottawa
Lake Michigan - Rosy Mound Recreation Area		Ottawa
Lake Michigan - Tunnel Park	Holland	Ottawa
Lake Michigan - Windsnest Park		Ottawa
Maplewood Lake - Maplewood Lake Park	Jenison	Ottawa
Pottawattomie Bayou - Pottawattomie Park	Grand Haven	Ottawa
Spring Lake - Lakeside Beach	end of Lake Avenue	Ottawa

http://glin.net/beachcast/



beach basics

[FAQ](#)

[Links & Resources](#)

Welcome to Great Lakes *BeachCast!*

This website, enhanced with funding from the [Great Lakes Restoration Initiative](#), broadcasts critical information about beach advisories in the Great Lakes region and related human health information.

<http://glin.net/beachcast/>

Welcome to Great Lakes **BeachCast!**

This website, enhanced with funding from the [Great Lakes Restoration Initiative](#), broadcasts critical information about beach advisories in the Great Lakes region and related human health information.

Map current conditions:



Map your favorite beaches to view:

- Beach closings and advisories
- Current weather, water and wind conditions

Download the app:



With the MyBeachCast mobile app for Android, you can discover local Great Lakes beaches based on your location, save favorite beaches, and view real-time information on beach water quality advisories, weather and water conditions.

Just click below to download the app from Google Play:



DEQ Department of Environmental Quality

- About the DEQ
- Air
- Climate Change
- Key Topics
- Land
- News and Events
- Pollution Prevention
- Waste
- Water
- Aquatic Invasive Species
- Biosolids & Industrial Pretreatment
- Campgrounds and Pools
- Drinking Water
- Enbridge Oil Spill
- Great Lakes
- Groundwater Discharge
- Groundwater Modeling
- Inland Lakes & Streams
- On Site Wastewater
- Operating Training & Certification

DEQ > WATER > WATER QUALITY MONITORING > BEACH WATER MONITORING

Introduction

Michigan Public Beach Information

This site contains information about Michigan public beaches and recreational-use waterways. Here you will find information about beach closings, monitoring efforts and E. coli test results. Information on this site is entered and maintained by local health department offices.

Information

- [2013 Annual Beach Monitoring Report](#) PDF
- [Public Notice - Great Lakes Beach Monitoring Plan](#) PDF
- [2012 Annual Beach Monitoring Report](#) PDF
- [2011 Annual Beach Monitoring Report](#) PDF
- [2010 Annual Beach Monitoring Report](#) PDF
- [2009 Annual Beach Monitoring Report](#) PDF
- [2008 Annual Beach Monitoring Report](#) PDF
- [2007 Annual Beach Monitoring Report](#) PDF
- [2006 Annual Beach Monitoring Report](#) PDF
- [2005 Annual Beach Monitoring Report](#) PDF
- [2004 Annual Beach Monitoring Report](#) PDF
- [2003 Annual Beach Monitoring Report](#) PDF
- [How to Develop a Beach Monitoring Program](#) PDF
- [About Beach Monitoring in Michigan](#)

Online Services

- [GLIN Great Lakes BeachCast](#)
- [Beach Monitoring System](#)

Grants

- [Water Quality Monitoring Grant Application Package, Fiscal Year 2015](#)

Related Links

- [My Beachcast - Great Lakes Beach Application](#)
- [Swimmer's Itch Information Brochure](#) PDF
- [Water Temperature Information](#)
- [Swimmers Itch Information](#)



Quick Links

- [Contact Information for Beach Water Monitoring](#)



Sign up for email from the DEQ! 

print friendly

Michigan
Dashboard

Economic Strength

Health & Education

Value for Money
Government

Quality of Life

State Park Popularity

Population growth

Monitored Beaches

Public Safety

Education Dashboard

Health & Wellness
DashboardInfrastructure
Dashboard

Talent Dashboard

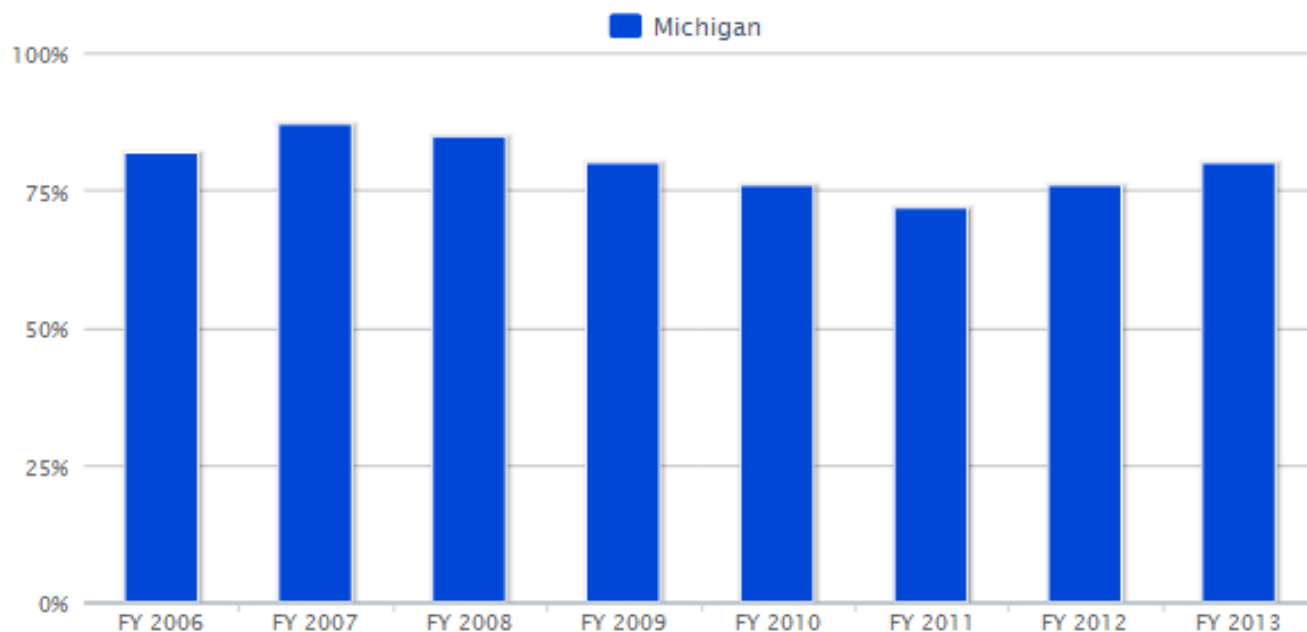
Public Safety
Dashboard

Energy &

Monitored Beaches with no Closures or Unsafe Advisories

Why it Matters: Beaches in Michigan are monitored to ensure they are free from contamination so that users can fully enjoy them without risk of waterborne illnesses.

Percentage of Monitored Beaches with no Closures or Unsafe Advisories



Source: Michigan Department of Environmental Quality, Water Resources Division
Updated annually in January

http://www.michigan.gov/deq/1,1607,7-135-3313_3686_3728-12711--,00.html

WATER QUALITY
AND
POLLUTION CONTROL
IN MICHIGAN
2014 SECTIONS 303(d), 305(b), AND 314
INTEGRATED REPORT



Michigan Department of Environmental Quality
Water Resources Division
March 2014

Water Quality and Pollution Control in Michigan Sections 303(d), 305(b), and 314 Integrated Report

WATER QUALITY AND POLLUTION CONTROL IN MICHIGAN SECTIONS 303(d), 305(b), AND 314 INTEGRATED REPORT

FINAL DRAFT 2014 CLEAN WATER ACT SECTIONS 303(d), 305(b), AND 314 INTEGRATED REPORT. The Michigan Department of Environmental Quality (MDEQ), Water Resources Division (WRD), has submitted the final draft Water Quality and Pollution Control in Michigan, 2014 Sections 303(d), 305(b), and 314 Integrated Report. Every two years, the MDEQ, WRD, prepares and submits an Integrated Report to the United States Environmental Protection Agency (USEPA) to satisfy the listing requirements of Section 303(d) and the reporting requirements of Sections 305(b) and 314 of the federal Clean Water Act. The final draft Integrated Report will be considered finalized following review and approval by the USEPA, and will be noted as such on this website. The Integrated Report describes the status of water quality in Michigan and includes a list of water bodies that are not attaining Michigan Water Quality Standards and require the establishment of pollutant Total Maximum Daily Loads. Information Contact: *Kevin Goodwin* at 517-284-5552 or e-mail at goodwink@michigan.gov.

- Download the [2014 Report](#)

Appendix A1 - [8 and 12 Digit Hydrologic Unit Code \(HUC\) Basins for the Lower Peninsula](#)

Appendix A2 - [8 and 12 Digit Hydrologic Unit Code \(HUC\) Basins for the Upper Peninsula](#)

Appendix B1 - [Comprehensive list of assessment unit designated use support \(HUCs 04010302 - 04050007\)](#)

Appendix B2 - [Comprehensive list of assessment unit designated use support \(HUCs 04060101 - 07070001\)](#)

Appendix C - [List of assessment units not supporting designated uses and are scheduled for a TMDL \(Category 5\)](#)

Appendix D1 - [303\(d\) list modifications - delistings](#)

Appendix D2 - [303\(d\) list modifications - new listings](#)

Appendix E - [Public Comment and Response](#)



Watershed Assessment, Tracking & Environmental Results

[Recent Additions](#) | [Contact Us](#) Search: All EPA This Area

You are here: [EPA Home](#) » [Water](#) » [WATERS](#) » [Water Quality Assessment and TMDL Information](#)

About WATERS
Overview
Geography
Architecture

Tools

Data

Documents

Reporting

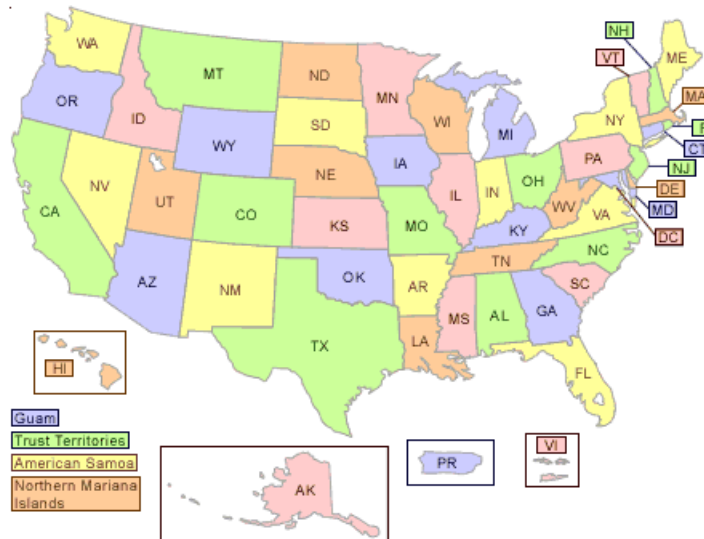
Water Quality Assessment and Total Maximum Daily Loads Information

This site provides information reported by the states to EPA about the conditions in their surface waters. This information is required every two years under Clean Water Act Sections 305(b) and 303(d).

Because of differences in state assessment methods, the information in this site should not be used to compare water quality conditions between states or to determine water quality trends. Check out the Features box on the right to learn more.

[Which state reports are available?](#)

[National Summary of State Information](#)



Search for Water Quality Information

Click on the above map for a state's most recent data, or use the pull down boxes below to:

Methodology for Integrated Report

- 10% of the **monthly geometric mean** samples exceed the monthly geometric mean WQS of **130** *E. coli* per 100 ml based on weekly samples collected over a minimum of 5 weeks.
- 10% of the **daily geometric mean** samples exceed the daily maximum WQS of **300** *E. coli* per 100 ml based on weekly samples collected over a minimum of 5 weeks.
- Two or more sample results collected at any time during the total body contact recreation season of May 1 to October 31 exceed the **partial body** WQS of **1,000** *E. coli* per 100 ml.

Exceedances of the Daily Geometric Means

GHSP	Year	GHCB
0	2003	2
0	2004	1
1	2005	0
0	2006	0
1	2007	2
0	2008	0
2014 Integrated Report		
8	2011	5
2	2012	1
1	2013	1
0	2014	-
13	12 years	12

Grand Haven City Beach

	2011	2012
30 Day Geometric Mean 130 E. coli	None, n= 56 0%	4x, n= 11, 36%
Daily Geometric Mean 300 E. coli	5x, n= 61 8%	1x, n= 15 6%
Partial Body Contact 1,000 E. coli	1x	0x

Grand Haven State Park Beach

	2011	2012
30 Day Geometric Mean 130 E. coli	None, n= 56 0%	5x, n= 11, 45%
Daily Geometric Mean 300 E. coli	8x, n= 61 13%	3x, n= 15 20%
Partial Body Contact 1,000 E. coli	4x	1x

Grand Haven State Park Beach

http://www.michigan.gov/documents/deq/wrd-swas-ir2014-appD2_455864_7.pdf

Assessment Unit ID	Assessment Unit Name	Location Description		Water Type	
040500020301-04	LAKE MICHIGAN GRAND HAVEN STATE PARK BEACH	Lake Michigan, Grand Haven		GREAT LAKES SHORELINE	
	Designated Use	Attainment	Previous Cycle Attainment	Size	Units
	Total Body Contact Recreation	Not Supporting	Fully Supporting	0.57	MILES
	Causes:	Current Cycle	Previous Cycle		
		Escherichia coli			

Exceedances of the Daily Geometric Means

GHSP	Year	GHCB
0	2003	2
0	2004	1
1	2005	0
0	2006	0
1	2007	2
0	2008	0
0	2009	0
0	2010	0
Next Integrated Report		
1	2013	1
0	2014	-
13	12 years	12

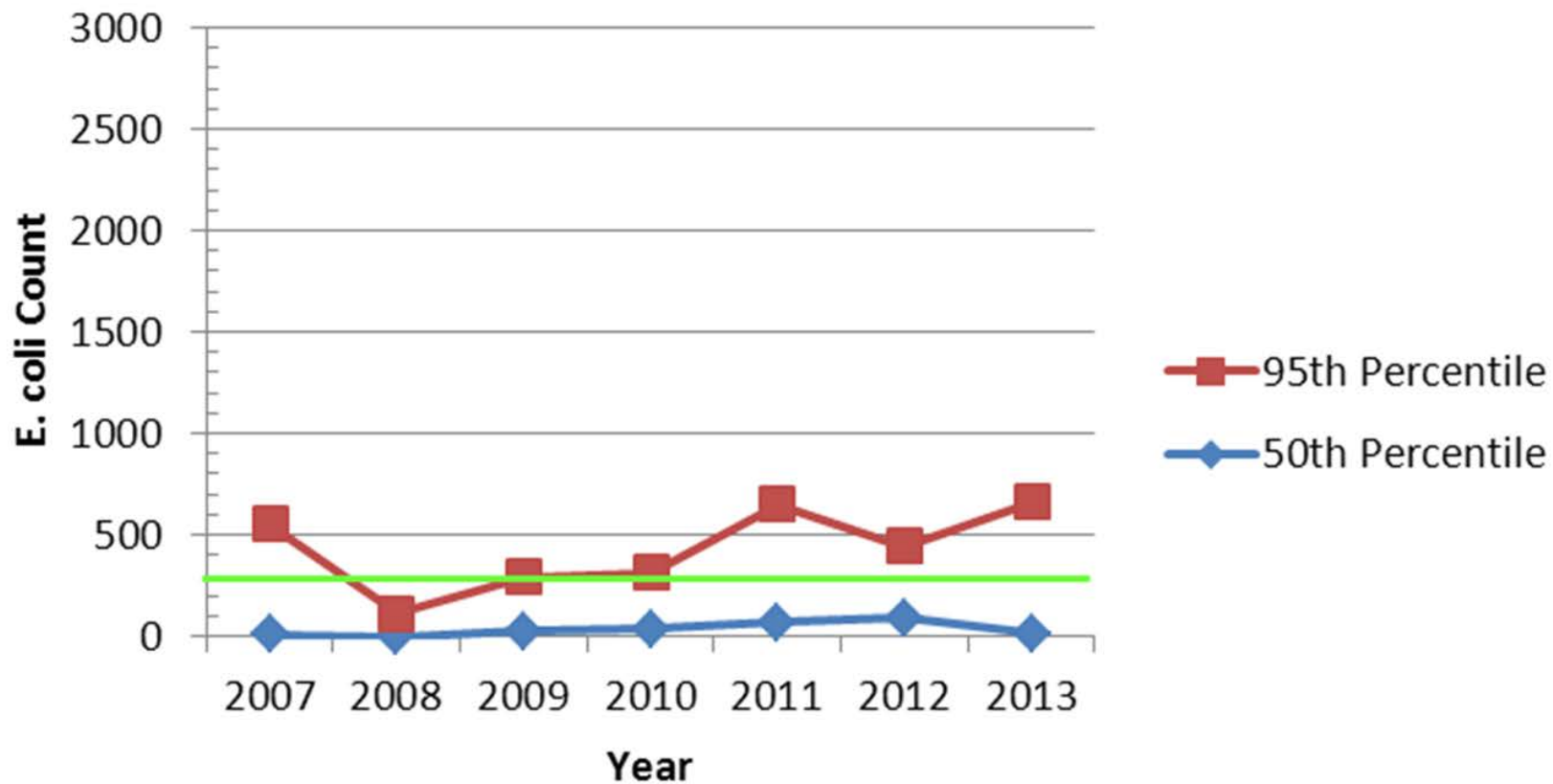
Grand Haven City Beach

	2013	2014
30 Day Geometric Mean 130 E. coli	0, n= unknown	n = 0
Daily Geometric Mean 300 E. coli	1x, n= 14 7%	n = 0
Partial Body Contact 1,000 E. coli	0x	n = 0

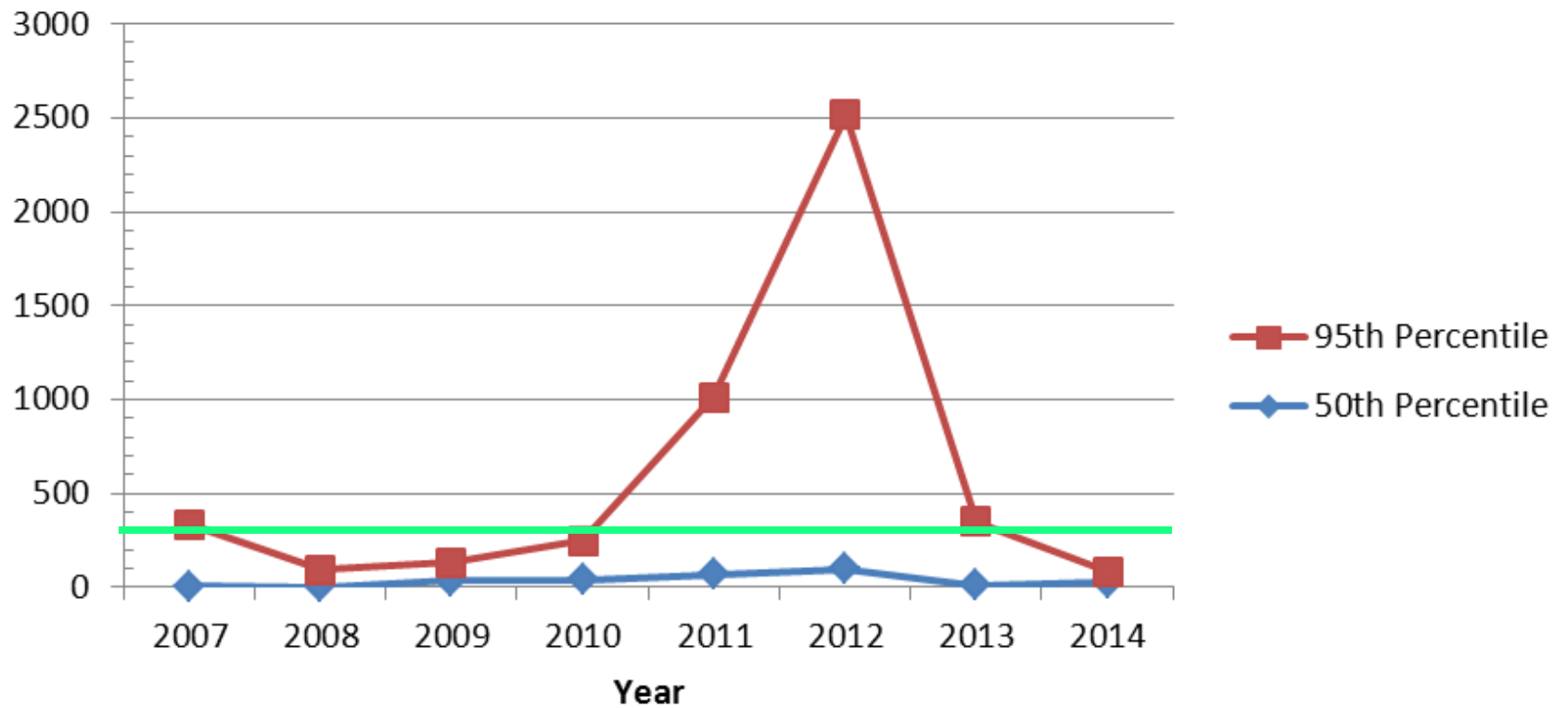
Grand Haven State Park Beach

	2013	2014
30 Day Geometric Mean 130 E. coli	0, n= unknown	0, n= unknown
Daily Geometric Mean 300 E. coli	1x, n= 14 7%	0x, n = 8 0%
Partial Body Contact 1,000 E. coli	0x	0x

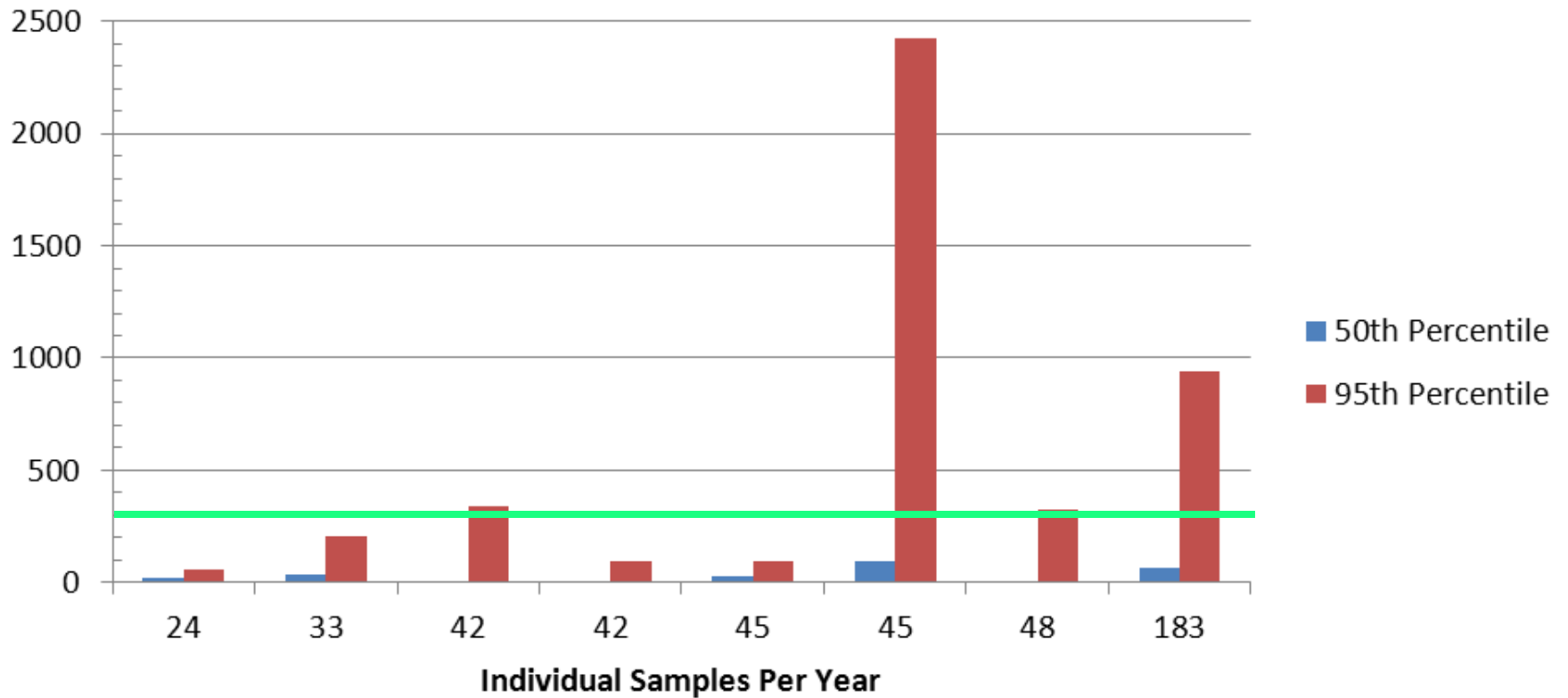
Grand Haven City Beach - Lake Michigan



Grand Haven State Park - Lake Michigan



Grand Haven State Park - Lake Michigan



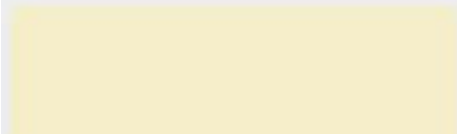




10 Day
Instagram
CHALLENGE

PURE MICHIGAN

Submit your photos using   | @PureMichigan
 #puremichigan #beachchallenge



<http://www.michigan.org/blog/wp-content/uploads/Bob-Peskorse-Jr-Grand-Haven.jpeg>

Bob Peskorse Jr Grand Haven

Published July 2, 2014 at 1024 × 685 in [Fifteen Photos That Will Get You Dreaming of a Perfect Pure Michigan Beach Day](#)
[← Previous](#) [Next →](#)



<http://www.michigan.org/beachchallenge/>

The sandy shores of Lake Michigan are just right for building a sand castle. Photo by Robert Jacobs (Honorable Mention).

