

MDEQ- PFAS Investigations

Abigail Hendershott

Grand Rapids District Supervisor

Remediation & Redevelopment Division

Michigan Department of Environmental Quality

HendershottA@Michigan.gov

616-888-0528

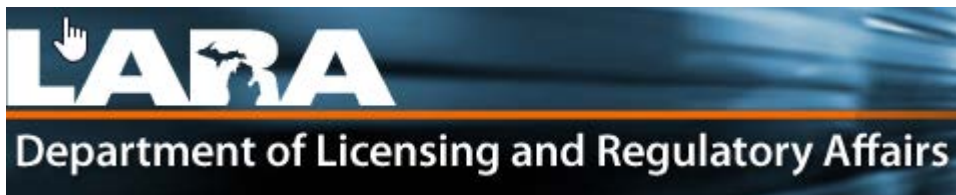
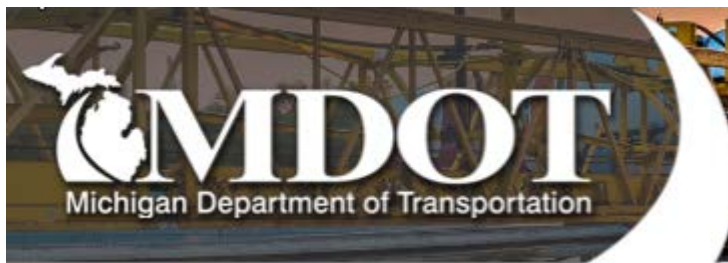


MPART

Michigan PFAS Action Response Team

- Governor Snyder signed ED 2017-4 on November 13, 2017
- Statewide cooperation and collaboration to strategically and proactively address this emerging contaminant.

Who is MPART?....



Statewide cooperation and collaboration to strategically and proactively address this emerging contaminant.

What Types of Sites Can Be Sources of PFAS?

- Fire training facilities
- Fire stations
- Refineries
- DoD sites/Military bases
- Commercial and Private Airports
- Landfills
- Biosolids land application
- Rail Yards
- Chemical facilities
- Plating facilities
- Textile/Carpet Manufactures
- Residential areas with septic systems



Monitoring Plus...

- Site-specific monitoring of known PFAS sites
- Monitoring of PFAS in rivers, lakes and streams, and fish
- Monitor point sources (Direct Discharges)
- Industrial Pretreatment Program Initiative (Indirect Discharges)
- Biosolids program
- Superfund program
- Coordinate with other Divisions (AQD, WMRPD and DHHS, others)

Community Water Supplies and Schools

1,380 community water supplies

461 schools

12 systems from 8 Tribes

> 700 supplies sampled so far

Represents 75% of MI residents

To be completed December 2018



Clear Map Map Zooms Map Quick Keys Site Details



Layers

- Street
- Aerial
- Hybrid
- Land Use
- TOPO

Toggle layer visibility by clicking the corresponding checkbox

Land Use Restriction

Environmental Management

Brownfield Redevelopment

Wellhead Protection Areas

Legislative Districts

Identifying Potential Sources (MDEQ-RRD)

In the area, looked for:

- Industrial operations
- Confirmed releases
- Fire stations
- Complaints / incidents
- Other confirmed contaminated sites
- Biosolids
- Fire responses

Database reviews

- Environmental Mapper
- ERNIE / RIDE / SID
- Google Maps / Earth
- Drinking Water GIS
- Other GIS applications



Environmental Mapper

Department of Environmental Quality



Go Back

Print / Export

Layers



Coordinates: 42.98337622, -86.08368562

Storage Tanks: 0

Locations of Environmental Contamination (Part 201): 1

Openfields: 0

Land Use Restriction Sites: 0

Baseline Environmental Assessment Sites: 0

State District: 1

Use District: 1

Clear Map Map Zooms Map Quick Keys Site Details Active

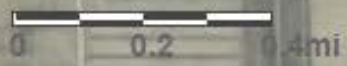


Coordinates: 42.98614, -86.09072

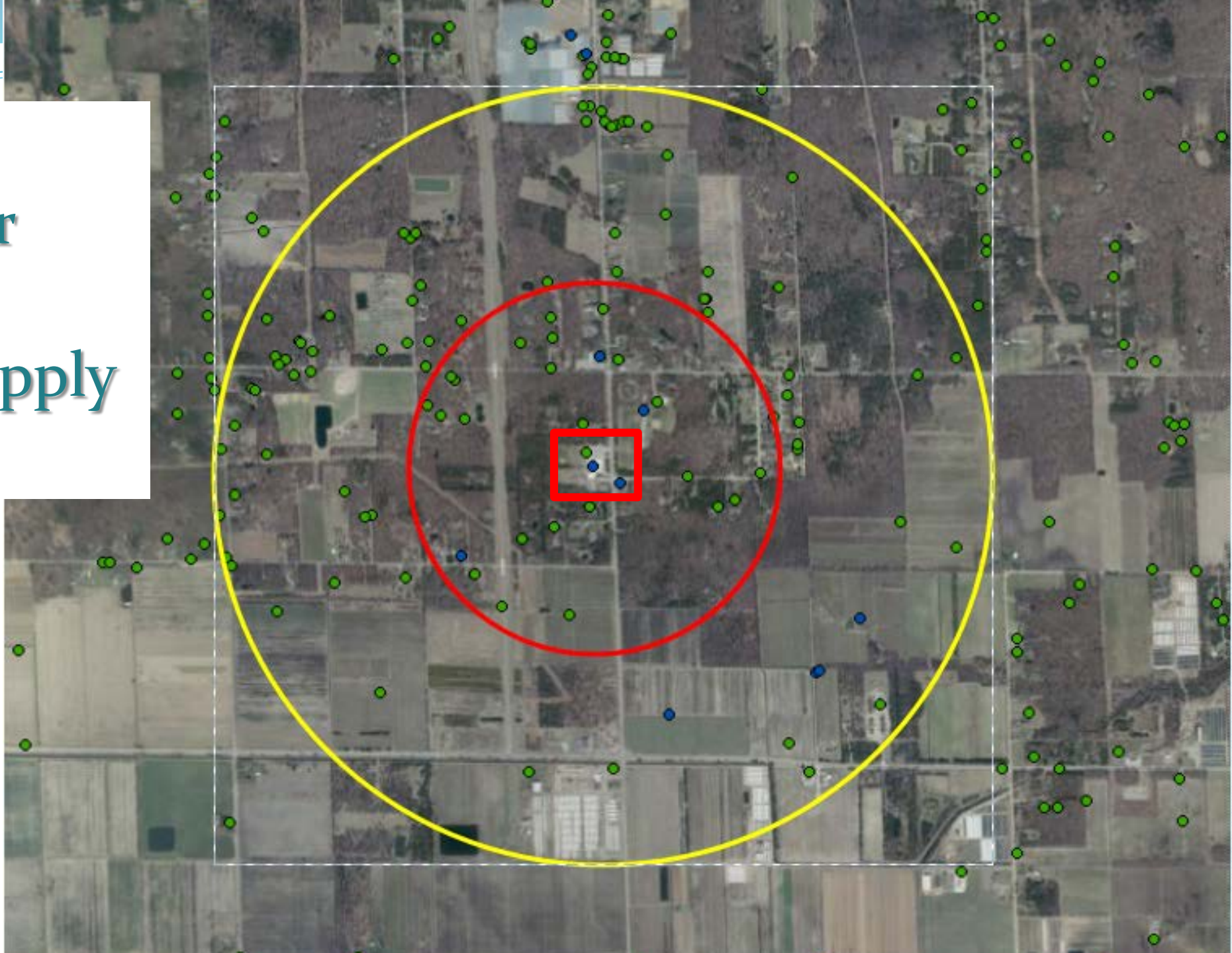
Well Head Protection Zones



42.99119, -86.12873



Residential Drinking Water Wells and Community Supply Wells



MDEQ- Next Steps

- Continue to investigate potential sources
- Evaluate additional sampling based on findings from 1st round of private well sampling
- Additional hydrogeological investigation
- Continue to coordinate with MPART, other Divisions and community stakeholders

Aquasana - Carbon filters are NSF certified to reduce PFOA and PFOS compounds



**PURE PERFORMANCE
CLARYUM®
TECHNOLOGY**



- Activated Carbon
Reduces organic chemicals like herbicides, pesticides, VOCs and MTBE.
- Catalytic Carbon
Targets chlorine and chloramines.
- Ion-Exchange
Filters heavy metals like lead and mercury.
- Absolute Sub-Micron Mechanical Filtration
Captures asbestos and chlorine resistant cysts like cryptosporidium and giardia.

THE RESULT: 10x more contaminants reduced plus healthy minerals retained for purely delicious filtered water.

<http://info.nsf.org/Certified/DWTU/Listings.asp?ProductFunction=P473%7CPFOA+Reduction&ProductFunction=P473%7CPFOS+Reduction&ProductType=&submit2=Search>

Michigan Department of Environmental Quality

800-662-9278

www.michigan.gov/deq



Sign up for email updates



Follow us on Twitter @MichiganDEQ

