



Cultivating Resilience, Solutions, and Relationships through Conservation Agriculture.

Rob Vink

Agricultural Technician

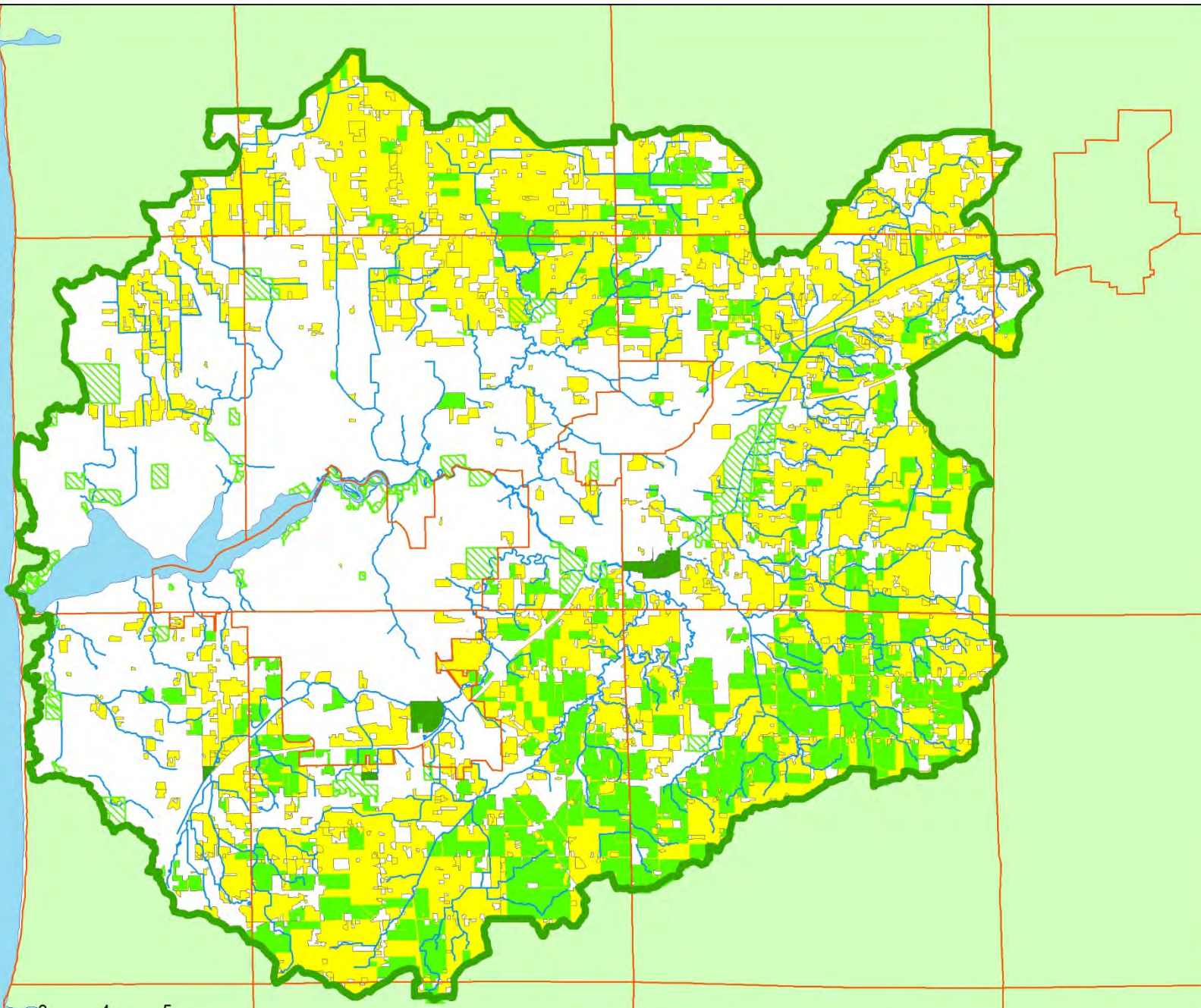
Macatawa Watershed Project

Macatawa Area Coordinating Council

Macatawa Watershed Project

Current Funding and Initiatives

- ▶ Great Lakes Restoration Initiative
- ▶ Great Lakes Commission - Streambank and 2-stage Channel
- ▶ Great Lakes Commission - Cover Crops and Grassed Waterways.
- ▶ Project Clarity - Project Partner - Technical assistance for agricultural practices



Data Source: Allegan County LIS, Ottawa County GIS, Michigan Geospatial Library

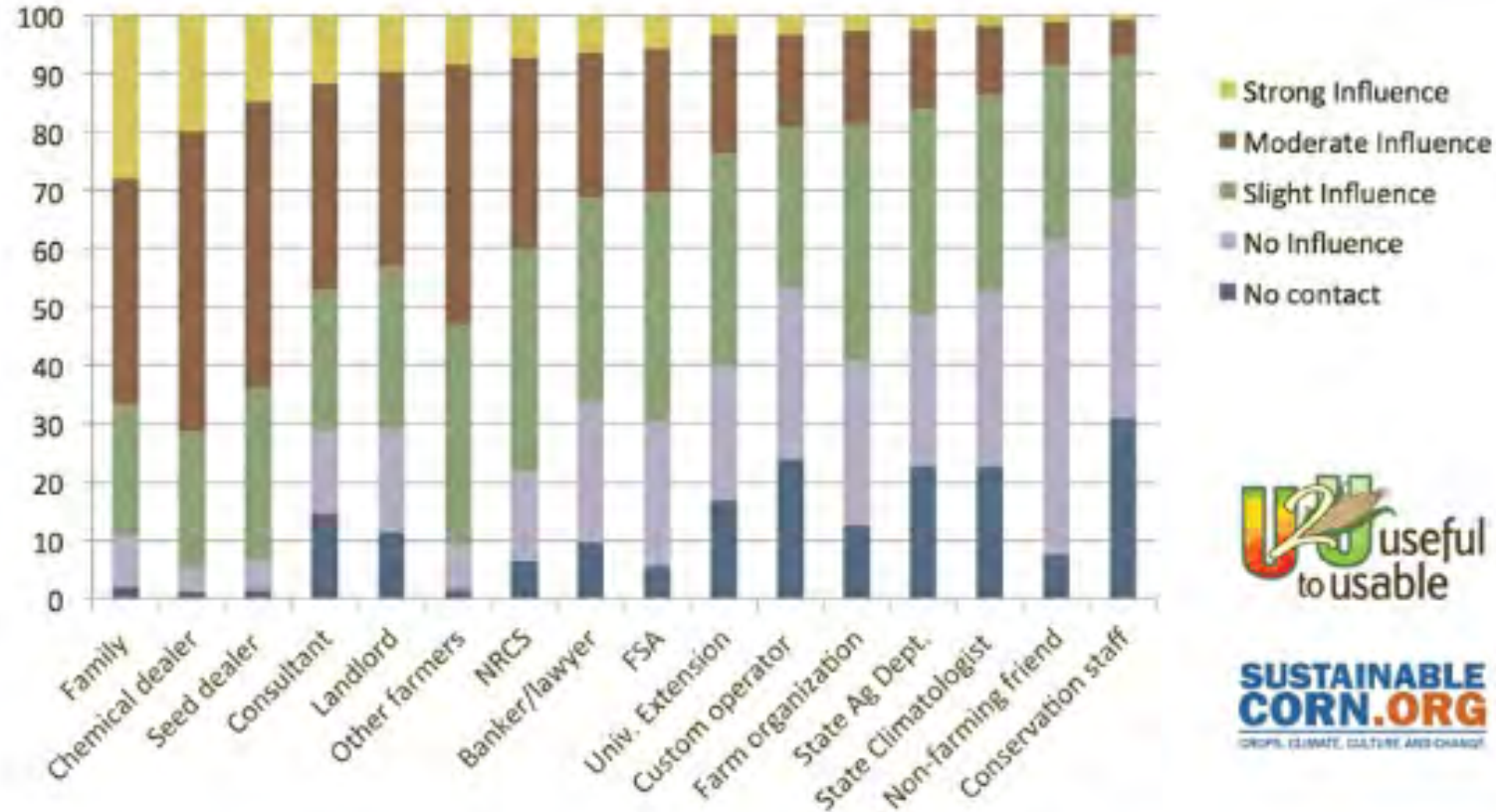
- 61 Farmers/Landowners participating in GLRI and Project Clarity funded Best Management Practices
- Over 22,000 acres of Best Management Practices



Regenerative and
Conservation Agriculture
Not Just for Hemp and
Hippies

Challenges to Agricultural Conservation

Q: Please indicate how influential the following groups and individuals are when you make decisions about agricultural practices and strategies



Influence of groups and individuals on farmer decision making about agricultural practices and strategies. Results from a 2012 survey of Midwestern corn producers conducted by Useful to Usable (U2U) and SustainableCorn.org



Relationships

- ▶ Must be on the farm
- ▶ Work with Agricultural Service Providers (ASPs) to reach farmers
- ▶ Partnering with like minded organizations

2019 Cultivating Resilience Farm Field Day



Photos by: BDE Photography

Education

- ▶ Soil fertility and soil biology are not the same thing
- ▶ What do soil tests tell us about soil health and water quality?
- ▶ Yield vs. Profit - how can conservation help you become profitable?

Gypsum





Residue Management











Grassed Waterways













Cover Crops











Austin Morren

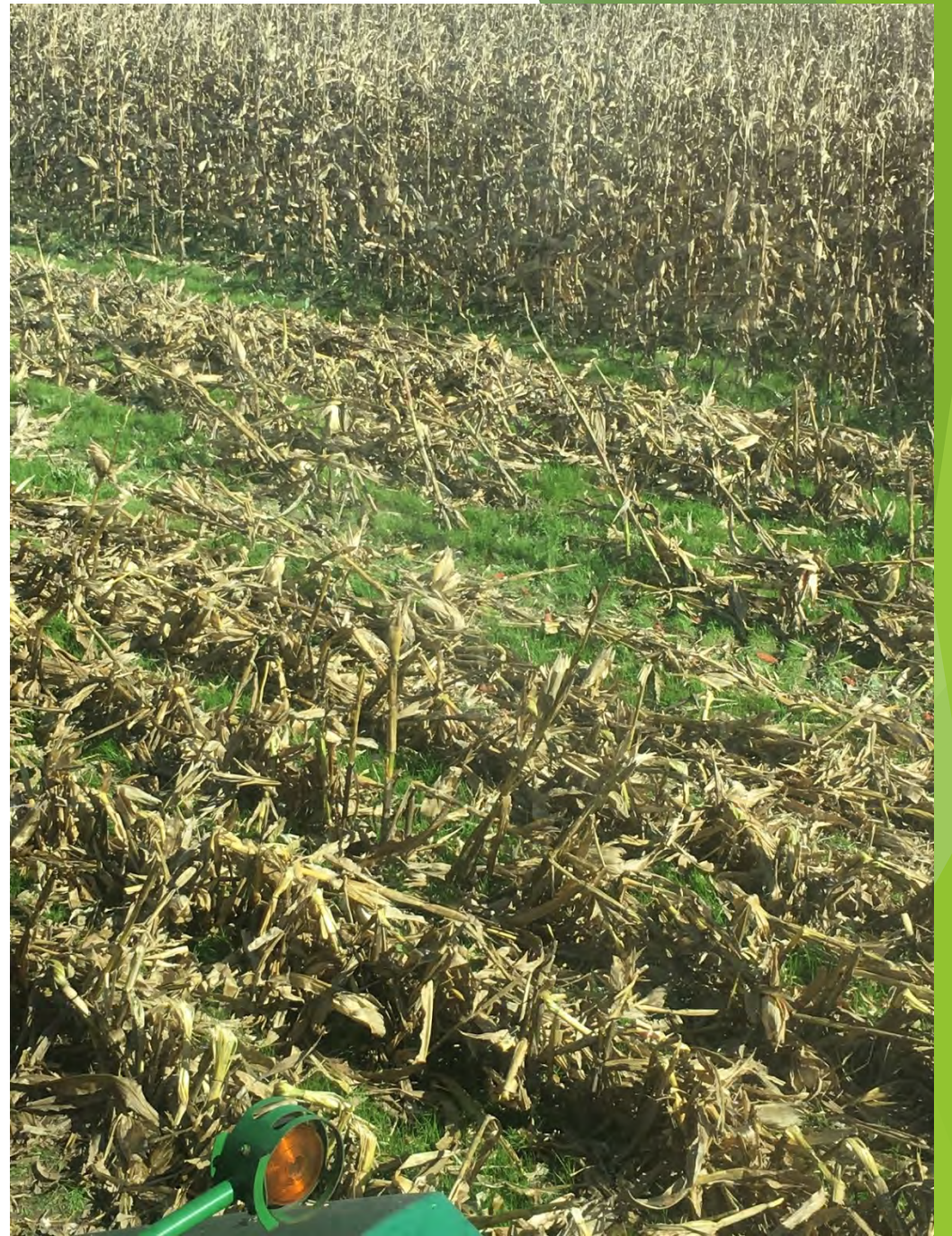
















Questions?

