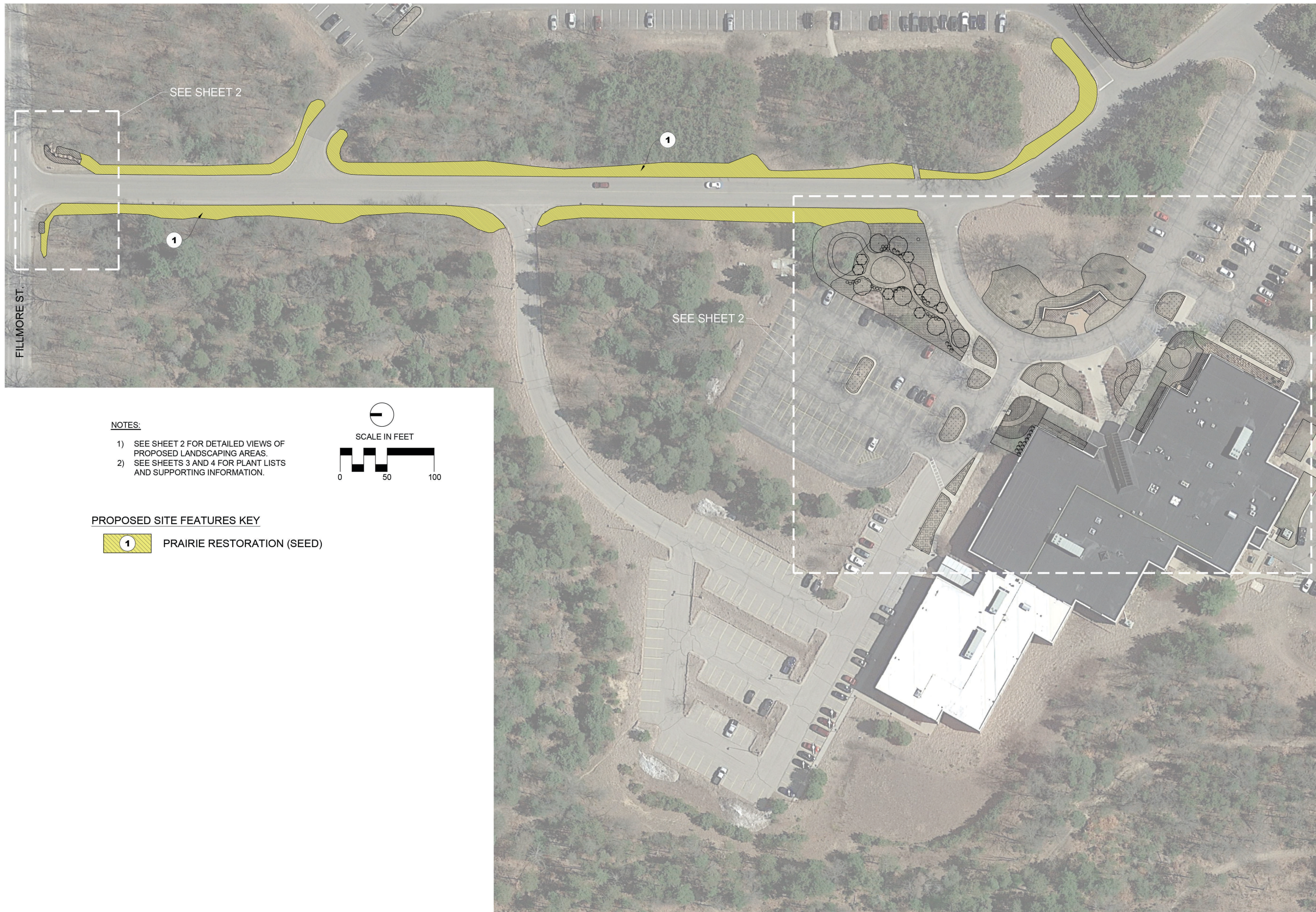
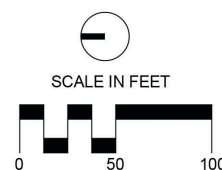


**NATIVE LANDSCAPE DESIGN**  
**OTTAWA COUNTY**  
**DEPT. OF STRATEGIC IMPACT**



**NOTES:**

- 1) SEE SHEET 2 FOR DETAILED VIEWS OF PROPOSED LANDSCAPING AREAS.
- 2) SEE SHEETS 3 AND 4 FOR PLANT LISTS AND SUPPORTING INFORMATION.



**PROPOSED SITE FEATURES KEY**

- 1 PRAIRIE RESTORATION (SEED)

**PREPARED FOR:**

Ottawa County  
 12220 Fillmore St,  
 West Olive, MI 49460

#	DATE	ISSUE / REVISION
1	3/31/23	Concept Development
2	5/5/23	Schematic Design

**SEAL**

**DATE:** 7/21/23

**PROJECT No.:** NE23703

**ISSUE / REVISION:** 2

**SCALE:** 1"=50' (1"=100' @ 1/2 SCALE)

**SHEET TITLE**

Fillmore Overall Site Plan

**SHEET**

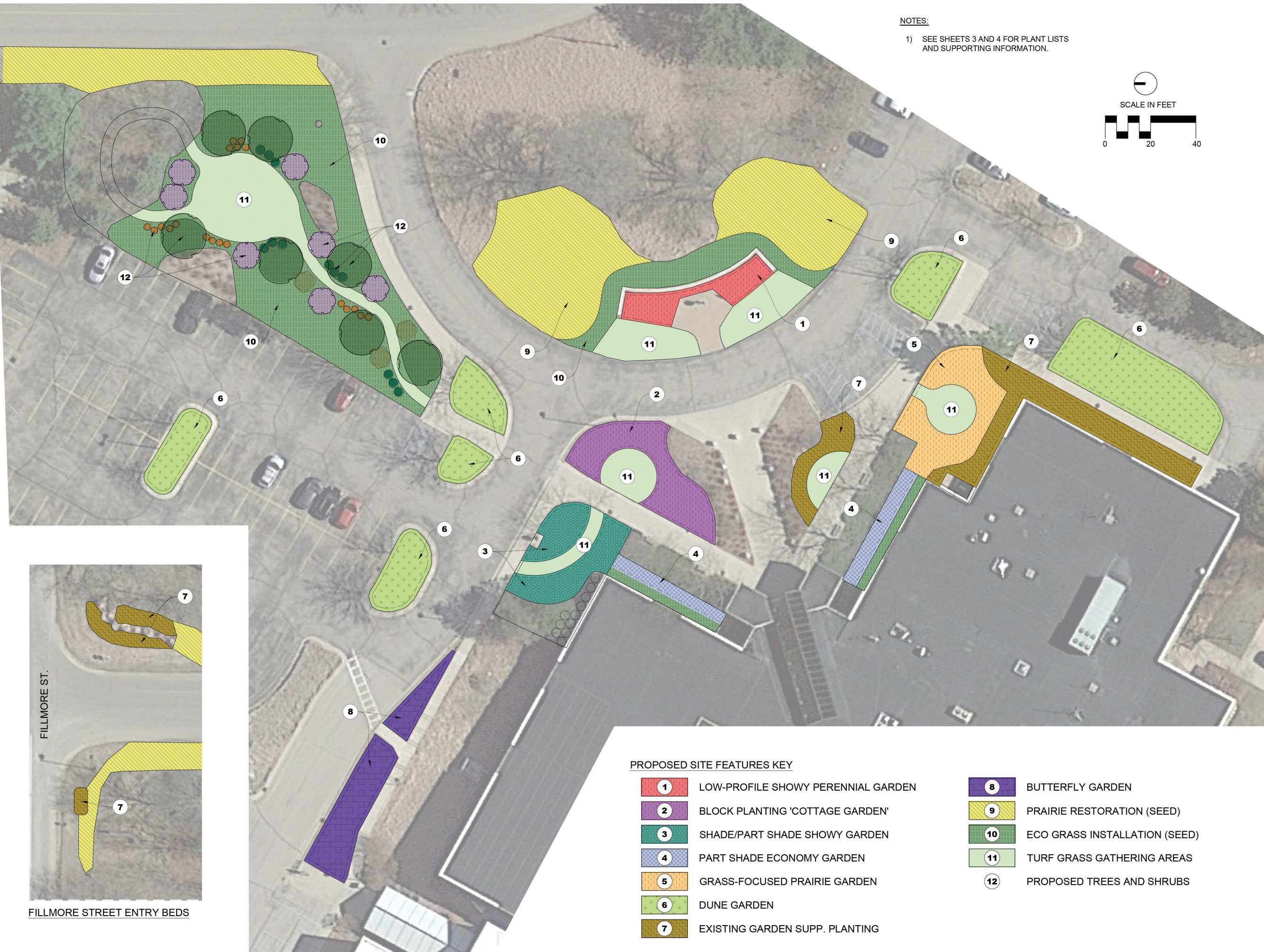
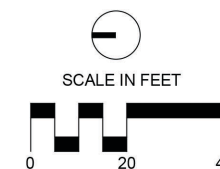
**C1**

**SHEET No.** 1 OF 9



**NOTES:**

- 1) SEE SHEETS 3 AND 4 FOR PLANT LISTS AND SUPPORTING INFORMATION.



FILLMORE STREET ENTRY BEDS

**PROPOSED SITE FEATURES KEY**

- |                                             |                                         |
|---------------------------------------------|-----------------------------------------|
| <b>1</b> LOW-PROFILE SHOWY PERENNIAL GARDEN | <b>8</b> BUTTERFLY GARDEN               |
| <b>2</b> BLOCK PLANTING 'COTTAGE GARDEN'    | <b>9</b> PRAIRIE RESTORATION (SEED)     |
| <b>3</b> SHADE/PART SHADE SHOWY GARDEN      | <b>10</b> ECO GRASS INSTALLATION (SEED) |
| <b>4</b> PART SHADE ECONOMY GARDEN          | <b>11</b> TURF GRASS GATHERING AREAS    |
| <b>5</b> GRASS-FOCUSED PRAIRIE GARDEN       | <b>12</b> PROPOSED TREES AND SHRUBS     |
| <b>6</b> DUNE GARDEN                        |                                         |
| <b>7</b> EXISTING GARDEN SUPP. PLANTING     |                                         |

**NATIVE LANDSCAPE DESIGN**  
**OTTAWA COUNTY**  
**DEPT. OF STRATEGIC IMPACT**

**PREPARED FOR:**

Ottawa County  
 12220 Fillmore St,  
 West Olive, MI 49460

#	DATE	ISSUE / REVISION
1	3/31/23	Concept Development
2	5/5/23	Schematic Design

**SEAL**

**DATE:** 7/21/23

**PROJECT No.:** NE23703

**ISSUE / REVISION:** 2

**SCALE:** 1"=20' (1"=40' @ 1/2 SCALE)

**SHEET TITLE**

Fillmore 'Outdoor Showroom'

**SHEET**

**C2**

**SHEET No.** 2 OF 9



**KEY #1 LOW-PROFILE SHOWY PERENNIAL GARDEN**

This garden area will be located in the existing garden beds of the Ottawa County Sheriff's Office memorial. The vegetation in this area will grow no more than 30" tall and will focus on flowering plants and season-long visual interest.

KEY #1 - LOW-PROFILE SHOWY PERENNIAL GARDEN					
Qty	Scientific Name	Common Name	Spacing	Grouping	Condition
<b>FORBS</b>					
	<i>Asclepias tuberosa</i>	Butterfly Weed	10"	3-7	Plug
	<i>Baptisia bracteata</i>	Cream Wild Indigo	24"	1-3	Plug
	<i>Campanula rotundifolia</i>	Harebell	8"	3-7	Plug
	<i>Coreopsis lanceolata</i>	Sand Tickseed	12"	3-7	Plug
	<i>Dalea purpurea</i>	Purple Prairie Clover	10"	5-9	Plug
	<i>Echinacea pallida</i>	Pale Purple Coneflower	10"	7-13	Plug
	<i>Lupinus perennis</i>	Wild Lupine	12"	5-9	Plug
	<i>Phlox pilosa</i>	Prairie Phlox	12"	7-11	Plug
	<i>Ruellia humilis</i>	Wild Petunia	12"	5-9	Plug
	<i>Symphotrichum oolentangiense</i>	Sky Blue Aster	12"	3-7	Plug
<b>GRAMINOIDES</b>					
	<i>Eragrostis spectabilis</i>	Purple Love Grass	10"	5-9	Plug
	<i>Sporobolus heterolepis</i>	Prairie Dropseed	12"	3-11	Plug



**KEY #2 BLOCK PLANTING 'COTTAGE' GARDEN**

This garden area will use repeating masses of native perennials to mimic a 'traditional' landscape and present an orderly, yet dynamic, natural landscaping option. Masses of individual plants, or specific groups of plants, will be repeated to reinforce intentionality and create rhythm and harmony.

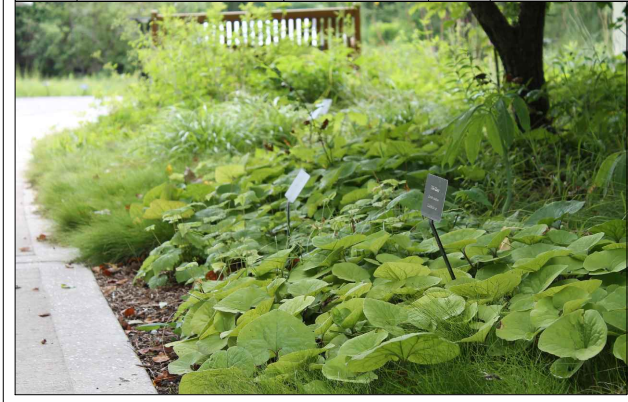
KEY #2 - BLOCK PLANTING 'COTTAGE' GARDEN					
Qty	Scientific Name	Common Name	Spacing	Grouping	Condition
<b>FORBS</b>					
	<i>Agastache foeniculum</i>	Anise Hyssop	12"	5-9	Plug
	<i>Asclepias tuberosa</i>	Butterfly Weed	10"	3-7	Plug
	<i>Baptisia australis</i>	Blue Wild Indigo	24"	1-3	Plug
	<i>Baptisia bracteata</i>	Cream Wild Indigo	24"	1-3	Plug
	<i>Coreopsis lanceolata</i>	Sand Tickseed	12"	3-7	Plug
	<i>Echinacea purpurea</i>	Purple Coneflower	12"	5-11	Plug
	<i>Liatris aspera</i>	Rough Blazing Star	10"	5-9	Plug
	<i>Lupinus perennis</i>	Wild Lupine	12"	5-9	Plug
	<i>Monarda punctata</i>	Dotted Horsemint	12"	5-10	Plug
	<i>Monarda fistulosa</i>	Wild Bergamot	12"	5-11	Plug
	<i>Penstemon digitalis</i>	Foxglove Beardtongue	10"	5-9	Plug
	<i>Phlox pilosa</i>	Prairie Phlox	12"	7-11	Plug
	<i>Pycnanthemum virginianum</i>	Mountain Mint	12"	5-9	Plug
	<i>Solidago rigida</i>	Stiff Goldenrod	12"	7-11	Plug
	<i>Symphotrichum oolentangiense</i>	Sky Blue Aster	12"	3-7	Plug
<b>GRAMINOIDES</b>					
	<i>Eragrostis spectabilis</i>	Purple Love Grass	10"	5-9	Plug
	<i>Schizachyrium scoparium</i>	Little Bluestem	12"	5-11	Plug
	<i>Sporobolus heterolepis</i>	Prairie Dropseed	12"	3-11	Plug



**KEY #3 SHADE / PART SHADE SHOWY GARDEN**

This garden area will feature showy shade garden plantings, installed in a block-style planting similar to traditional landscaping. This garden will show many different species options which will work in part-shade.

KEY #3 - SHADE/PART SHADE SHOWY GARDEN					
Qty	Scientific Name	Common Name	Spacing	Grouping	Condition
<b>FORBS</b>					
	<i>Anemone virginiana</i>	Thimbleweed	10"	3-9	Plug
	<i>Aquilegia canadensis</i>	Columbine	12"	3-9	Plug
	<i>Aralia racemosa</i>	Spikenard	36"	3-9	Quart
	<i>Campanula americana</i>	Tall Bellflower	12"	5-9	Plug
	<i>Eurybia macrophylla</i>	Big-leaved Aster	12"	5-9	Plug
	<i>Eutrachium purpureum</i>	Sweet Joe Pye Weed	18"	5-9	Plug
	<i>Geranium maculatum</i>	Wild Geranium	8"	5-13	Plug
	<i>Helianthus divaricatus</i>	Woodland Sunflower	12"	5-9	Plug
	<i>Heuchera americana</i>	Alum Root	12"	5-9	Plug
	<i>Maianthemum racemosum</i>	Solomon's Plume	12"	5-9	Plug
	<i>Mitella diphylla</i>	Bishop's cap	8"	5-9	Plug
	<i>Solidago caesia</i>	Blue Stemmed Goldenrod	12"	3-9	Plug
	<i>Solidago flexicaulis</i>	Zigzag Goldenrod	12"	5-9	Plug
	<i>Symphotrichum cordifolium</i>	Heart-leaved Aster	12"	3-9	Plug
<b>GRAMINOIDES</b>					
	<i>Carex blanda</i>	Common Wood Sedge	12"	5-11	Plug
	<i>Carex eburnea</i>	Ivory Sedge	8"	3-9	Plug
	<i>Carex pennsylvanica</i>	Pennsylvania Sedge	6"	7-13	Plug
	<i>Carex plantaginea</i>	Plantain-leaved Sedge	10"	7-13	Plug
	<i>Carex sprengei</i>	Long Beaked Sedge	12"	5-11	Plug
	<i>Elymus hystrix</i>	Bottlebrush Grass	12"	5-11	Plug
<b>FERNS</b>					
	<i>Dennstaedtia punctilobula</i>	Hayscented Fern	18"	5-11	Quart
	<i>Dryopteris marginalis</i>	Eastern Wood Fern	18"	5-11	Quart



**KEY #4 PART SHADE ECONOMY GARDEN**

This garden area will be located behind the existing yew shrubs and be a medium height, creating a beautiful backdrop in an area that is only grass. This will be a less diverse mix, with reliable perennials being planted in mass to add lots of color and seasonal interest to the building entrance.

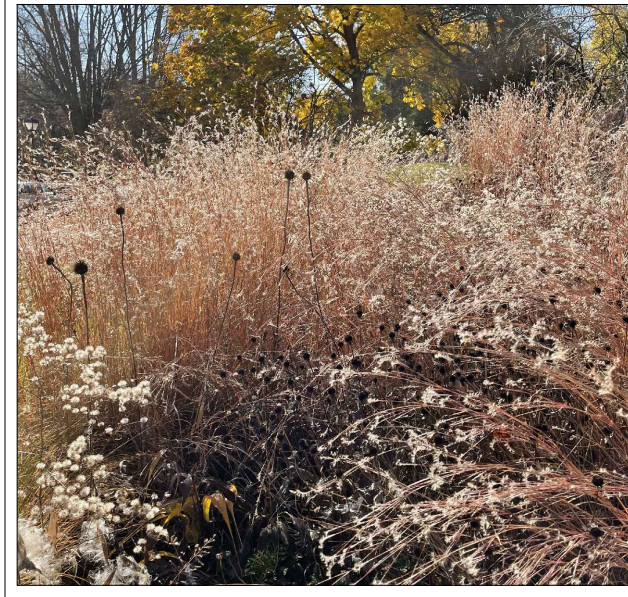
KEY #4 - PART SHADE ECONOMY GARDEN					
Qty	Scientific Name	Common Name	Spacing	Grouping	Condition
<b>FORBS</b>					
	<i>Aquilegia canadensis</i>	Columbine	12"	3-9	Plug
	<i>Echinacea purpurea</i>	Purple Coneflower	12"	5-11	Plug
	<i>Helianthus divaricatus</i>	Woodland Sunflower	12"	5-9	Plug
	<i>Penstemon digitalis</i>	Foxglove Beardtongue	10"	5-9	Plug
	<i>Pycnanthemum virginianum</i>	Mountain Mint	12"	5-9	Plug
	<i>Rudbeckia fulgida</i>	Orange Coneflower	12"	3-9	Plug
	<i>Solidago caesia</i>	Blue Stemmed Goldenrod	12"	3-9	Plug
	<i>Symphotrichum cordifolium</i>	Heart-leaved Aster	12"	3-9	Plug
<b>GRAMINOIDES</b>					
	<i>Carex sprengei</i>	Long Beaked Sedge	12"	5-11	Plug
	<i>Elymus hystrix</i>	Bottlebrush Grass	12"	5-11	Plug
<b>SHRUBS</b>					
	<i>Diervilla lonicera</i>	Bush Honeysuckle	36"	5-11	Plug



**KEY #5 GRASS-FOCUSED PRAIRIE GARDEN**

This garden area will be planted in a naturalistic manner, where perennial plants are planted in smaller, more irregular groups, among a base matrix of native grasses. This is a 'prairie style' garden and is meant to look intentional, yet naturalistic, and lower-maintenance than block-style planting.

KEY #5 - GRASS-FOCUSED PRAIRIE GARDEN					
Qty	Scientific Name	Common Name	Spacing	Grouping	Condition
<b>FORBS</b>					
	<i>Aquilegia canadensis</i>	Columbine	12"	3-9	Plug
	<i>Asclepias tuberosa</i>	Butterfly Weed	10"	3-7	Plug
	<i>Campanula rotundifolia</i>	Harebell	8"	3-7	Plug
	<i>Coreopsis lanceolata</i>	Sand Tickseed	12"	3-7	Plug
	<i>Dalea purpurea</i>	Purple Prairie Clover	10"	5-9	Plug
	<i>Echinacea pallida</i>	Pale Purple Coneflower	10"	7-13	Plug
	<i>Liatris aspera</i>	Rough Blazing Star	10"	5-9	Plug
	<i>Lupinus perennis</i>	Wild Lupine	12"	5-9	Plug
	<i>Monarda punctata</i>	Dotted Horsemint	12"	5-10	Plug
	<i>Solidago speciosa</i>	Showy Goldenrod	12"	5-9	Plug
	<i>Symphotrichum oolentangiense</i>	Sky Blue Aster	12"	3-7	Plug
<b>GRAMINOIDES</b>					
	<i>Buteloua curtipendula</i>	Sideoats Grama	12"	5-9	Plug
	<i>Eragrostis spectabilis</i>	Purple Love Grass	10"	5-9	Plug
	<i>Schizachyrium scoparium</i>	Little Bluestem	12"	5-11	Plug
	<i>Sporobolus heterolepis</i>	Prairie Dropseed	12"	3-11	Plug



**KEY #6 DUNE GARDEN**

This garden area will be planted using primarily dune grass (minimum 70%) with low-profile forbs sprinkled throughout. This planting will mimic a natural dune community, in a stylized manner.

KEY #6 - DUNE GARDEN					
Qty	Scientific Name	Common Name	Spacing	Grouping	Condition
<b>FORBS</b>					
	<i>Asclepias tuberosa</i>	Butterfly Weed	10"	3-7	Plug
	<i>Campanula rotundifolia</i>	Harebell	8"	3-7	Plug
	<i>Coreopsis lanceolata</i>	Sand Tickseed	12"	3-7	Plug
	<i>Dalea purpurea</i>	Purple Prairie Clover	10"	5-9	Plug
	<i>Echinacea pallida</i>	Pale Purple Coneflower	10"	7-13	Plug
	<i>Monarda punctata</i>	Dotted Horsemint	12"	5-10	Plug
	<i>Rudbeckia hirta</i>	Black Eyed Susan	10"	7-13	Plug
	<i>Symphotrichum oolentangiense</i>	Sky Blue Aster	12"	3-7	Plug
<b>GRAMINOIDES</b>					
	<i>Ammophila brevilinguata</i>	American Beachgrass	12"	20-50	Bare Root



**KEY #7 EXISTING GARDEN SUPPLEMENTARY PLANTINGS**

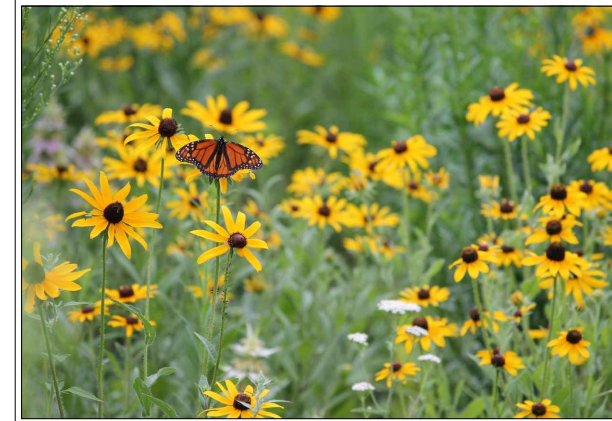
This plant list will be used to supplement existing garden beds, and add more color, texture, and seasonal interest. Reliable, long-lived species will be chosen to help fill out existing garden areas. Surplus species from other planting areas will also be used in these locations.

KEY #7 - EXISTING GARDEN SUPPLEMENTARY PLANTINGS					
Qty	Scientific Name	Common Name	Spacing	Grouping	Condition
<b>FORBS</b>					
	<i>Asclepias tuberosa</i>	Butterfly Weed	10"	3-7	Plug
	<i>Coreopsis lanceolata</i>	Sand Tickseed	12"	3-7	Plug
	<i>Echinacea purpurea</i>	Purple Coneflower	12"	5-11	Plug
	<i>Symphotrichum oolentangiense</i>	Sky Blue Aster	12"	3-7	Plug

**KEY #8 BUTTERFLY GARDEN**

This planting area will feature species that are critical in supporting butterfly populations. Key species include milkweed, lupine, and species which provide nectar throughout the season.

KEY #8 - BUTTERFLY GARDEN					
Qty	Scientific Name	Common Name	Spacing	Grouping	Condition
<b>FORBS</b>					
	<i>Achillea millefolium</i>	Yarrow	12"	5-9	Plug
	<i>Agastache foeniculum</i>	Anise Hyssop	12"	5-9	Plug
	<i>Asclepias syriaca</i>	Common Milkweed	12"	3-9	Plug
	<i>Asclepias tuberosa</i>	Butterfly Weed	10"	3-7	Plug
	<i>Coreopsis lanceolata</i>	Sand Tickseed	12"	3-7	Plug
	<i>Echinacea purpurea</i>	Purple Coneflower	12"	5-11	Plug
	<i>Liatris aspera</i>	Rough Blazing Star	10"	5-9	Plug
	<i>Lupinus perennis</i>	Wild Lupine	12"	5-9	Plug
	<i>Monarda fistulosa</i>	Wild Bergamot	12"	5-11	Plug
	<i>Monarda punctata</i>	Dotted Horsemint	12"	5-10	Plug
	<i>Solidago rigida</i>	Stiff Goldenrod	12"	7-11	Plug
	<i>Symphotrichum cordifolium</i>	Heart-leaved Aster	12"	3-9	Plug
<b>GRAMINOIDES</b>					
	<i>Schizachyrium scoparium</i>	Little Bluestem	12"	5-11	Plug



PO Box 140021, Grand Rapids, MI 49514  
p (616) 717-0656 e info@natedgeco.com

NATIVE LANDSCAPE DESIGN  
 OTTAWA COUNTY  
 DEPT. OF STRATEGIC IMPACT

**PREPARED FOR:**  
Ottawa County  
12220 Fillmore St,  
West Olive, MI 49460

#	DATE	ISSUE / REVISION
1	3/31/23	Concept Development
2	5/5/23	Schematic Design

**SEAL**

**DATE:** 7/21/23

**PROJECT No.:** NE23703

**ISSUE / REVISION:** 2

**SCALE:** NA

**SHEET TITLE**

**PLANT LISTS**

**SHEET**

**C3**

**SHEET No.** 3 OF 9


**NOTES:**

- 1) PLANT LISTS ARE SUBJECT TO CHANGE BASED ON AVAILABILITY AT TIME OF PLANTING.
- 2) IMAGES ARE CHARACTER REPRESENTATIONS OF PLANTING AREAS AND ARE NOT AN EXACT DEPICTION OF WHAT THE NEW PLANTING AREAS OR PROPOSED FEATURES. WILL LOOK LIKE



**KEY #9 PRAIRIE RESTORATION**

This area will feature a low-profile dry prairie, installed as a native seed mix. A seed mix prairie area will take longer to reach maturity, but will be extremely low maintenance once established. This will be a good example of an alternative to lawn, which provides an incredible amount of ecosystem services.



**Native Connections**  
3815 N Westedge Ave, Kalamazoo, MI 49004  
(P) 269.459.6900  
info@nativeconnections.net  
www.nativeconnections.net

**Dry Shortgrass Prairie Mix**

A mix based on a variety of "poor-soil" communities including dry sand prairies, oak barrens and pine barrens. This mix is designed to be low-profile so most plants won't exceed four feet in height. Big bluestem and indian grass would typically be important components of such prairies, and could be added. This mix is appropriate for drier soils.

Total Seeding Rate: 32.75 lbs per acre  
4.75 lbs grasses + 3 lbs forbs + 25 lbs nurse crop  
62 native seeds per sq ft

Call, email or visit our website for pricing.

Grasses	PLS Oz/acre	Seeds/sq ft
<i>Bouteloua curtipendula</i>	20.00	2.75
<i>Bromus kalmii</i>	4.00	0.73
<i>Elymus canadensis</i>	16.00	1.91
<i>Koeleria cristata</i>	0.50	2.30
<i>Schizachyrium scoparium</i>	35.00	12.05
<i>Sporobolus heterolepis</i>	0.50	0.18
<b>Total Grasses</b>	<b>76.00</b>	<b>19.93</b>

Forbs	PLS Oz/acre	Seeds/sq ft
<i>Anemone virginiana</i>	0.25	0.16
<i>Asclepias tuberosa</i>	1.50	0.15
<i>Aster spicatus (A. solentangensis)</i>	1.00	1.84
<i>Aster laevis</i>	1.00	1.26
<i>Ragwort lactea (R. hucamtha, R. alba)</i>	2.50	0.10
<i>Cassia fasciculata (Chamaecrista f.)</i>	6.00	0.37
<i>Coreopsis lanceolata</i>	4.50	2.07
<i>Desmodium illinoense</i>	0.25	0.02
<i>Echinacea purpurea</i>	4.50	0.88
<i>Ernodium vaseifolium</i>	1.25	0.22
<i>Liatris aspera</i>	0.25	0.09
<i>Lupinus perennis</i>	1.50	0.04
<i>Monarda fistulosa</i>	2.25	3.62
<i>Penstemon digitalis</i>	2.00	5.97
<i>Petalostemum purpureum (Dalea p.)</i>	4.50	1.86
<i>Potentilla arguta (Drymeconis a.)</i>	1.25	6.60
<i>Rudbeckia hirta</i>	2.50	1.72
<i>Rudbeckia hirta</i>	5.00	10.56
<i>Solidago nemoralis</i>	0.25	1.72
<i>Solidago rigida</i>	1.50	1.41
<i>Tradescantia virginiana</i>	1.00	0.18
<i>Verbena stricta</i>	2.50	1.61
<i>Zizia aurea</i>	0.75	0.21
<b>Total Forbs</b>	<b>48.00</b>	<b>42.45</b>

Temporary Grass Cover	Oz/acre	Seeds/sq ft
<i>Lolium multiflorum</i>	80.00	24.79
<i>Avena sativa</i>	320.00	7.35
<b>Total Temp Grasses</b>	<b>400.00</b>	<b>32.14</b>



**KEY #10 ECO GRASS**

This area replaces water-intensive turf grass with low maintenance 'eco grass'. Eco grass is a mix of native and non-native fescues which have a deeper root system than traditional lawn grass, making them more drought resistant, and do not need to be regularly mown.



**KEY #11 TURF GRASS GATHERING AREAS**

The turf grass gathering areas are existing areas of lawn that will be retained in order to allow visitors and Ottawa County staff access and enjoy the new garden spaces. These areas will be defined by the new garden areas and can have tables and chairs or picnic tables installed to provide a variety of seating and gathering areas in the main focal point of the Fillmore Complex.

**NOTES:**

- 1) PLANT LISTS ARE SUBJECT TO CHANGE BASED ON AVAILABILITY AT TIME OF PLANTING.
- 2) IMAGES ARE CHARACTER REPRESENTATIONS OF PLANTING AREAS AND ARE NOT AN EXACT DEPICTION OF WHAT THE NEW PLANTING AREAS OR PROPOSED FEATURES. WILL LOOK LIKE

**NATIVE LANDSCAPE DESIGN**  
**OTTAWA COUNTY**  
**DEPT. OF STRATEGIC IMPACT**

**PREPARED FOR:**

Ottawa County  
12220 Fillmore St,  
West Olive, MI 49460

#	DATE	ISSUE / REVISION
1	3/31/23	Concept Development
2	5/5/23	Schematic Design

**SEAL**

**DATE:** 7/21/23

**PROJECT No.:** NE23703

**ISSUE / REVISION:** 2

**SCALE:** NA

**SHEET TITLE**

PLANT LISTS & DETAILS

**SHEET**

**C4**

**SHEET No.** 4 OF 4



YARROW  
*Achillea millefolium*



ANISE HYSSOP  
*Agastace foeniculum*



AMERICAN BEACHGRASS  
*Ammophila breviligulata*



THIMBLEWEED  
*Anemone virginiana*



COLUMBINE  
*Aquilegia canadensis*



SPIKENARD  
*Aralia racemosa*



COMMON MILKWEED  
*Asclepias syriaca*



BUTTERFLYWEED  
*Asclepias tuberosa*



BLUE WILD INDIGO  
*Baptisia australis*



CREAM WILD INDIGO  
*Baptisia bracteata*



SIDEOATS GRAMA  
*Bouteloua curtipendula*



TALL BELLFLOWER  
*Campanula americana*



HAREBELL  
*Campanula rotundifolia*



COMMON WOOD SEDGE  
*Carex blanda*



IVORY SEDGE  
*Carex eburnea*



NATIVE LANDSCAPE DESIGN  
OTTAWA COUNTY  
DEPT. OF STRATEGIC IMPACT

**PREPARED FOR:**  
Ottawa County  
12220 Fillmore St,  
West Olive, MI 49460

#	DATE	ISSUE / REVISION
1	3/31/23	Concept Development
2	5/5/23	Schematic Design

**SEAL**

**DATE:** 7/21/23

**PROJECT No.:** NE23703

**ISSUE / REVISION:** 2

**SCALE:** NA

**SHEET TITLE**

PLANT PHOTOS (1 OF 5)

**SHEET**

**C5**

**SHEET No.** 5 OF 9



PENNSYLVANIA SEDGE  
*Carex pensylvanica*



PLANTAIN-LEAVED SEDGE  
*Carex plantaginea*



LONG BEAKED SEDGE  
*Carex sprengelii*



SAND TICKSEED  
*Coreopsis lanceolata*



PURPLE PRAIRIE CLOVER  
*Dalea purpurea*



HAYSCENTED FERN  
*Dennstaedtia punctilobula*



EASTERN WOOD FERN  
*Dryopteris marginalis*



PALE PURPLE CONEFLOWER  
*Echinacea pallida*



PURPLE CONEFLOWER  
*Echinacea purpurea*



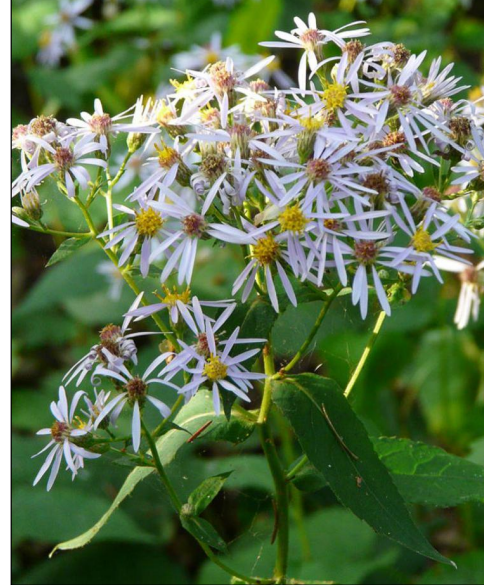
BOTTLEBRUSH GRASS  
*Elymus hystrix*



PURPLE LOVE GRASS  
*Eragrostis spectabilis*



BIG-LEAVED ASTER  
*Eurybia macrophylla*



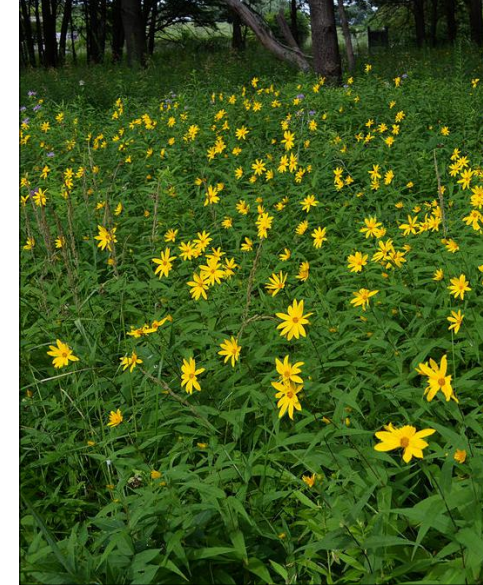
SWEET JOE PYE WEED  
*Eutrochium purpureum*



WILD GERANIUM  
*Geranium maculatum*



WOODLAND SUNFLOWER  
*Helianthus divaricatus*



NATIVE LANDSCAPE DESIGN  
OTTAWA COUNTY  
DEPT. OF STRATEGIC IMPACT

PREPARED FOR:  
Ottawa County  
12220 Fillmore St,  
West Olive, MI 49460

#	DATE	ISSUE / REVISION
1	3/31/23	Concept Development
2	5/5/23	Schematic Design

SEAL

DATE: 7/21/23

PROJECT No.: NE23703

ISSUE / REVISION: 2

SCALE: NA

SHEET TITLE

PLANT PHOTOS (2 OF 5)

SHEET

C6

SHEET No. 6 OF 9



ALUM ROOT  
*Heuchera americana*



ROUGH BLAZING STAR  
*Liatriis aspera*



WILD LUPINE  
*Lupinus perennis*



SOLOMON'S PLUME  
*Maianthemum racemosum*



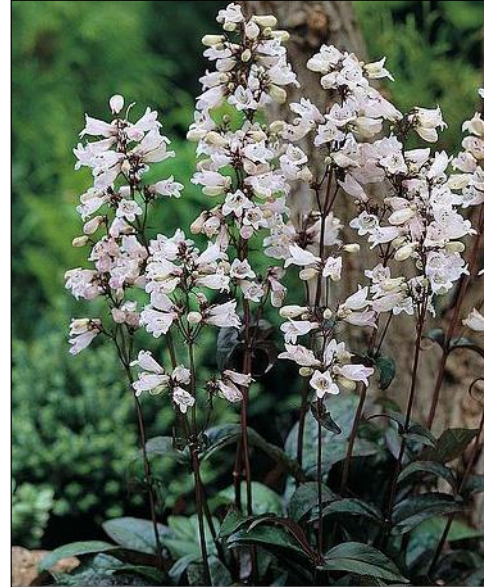
WILD BERGAMOT  
*Monarda fistulosa*



DOTTED HORSEMINT  
*Monarda punctata*



FOXGLOVE BEARDTONGUE  
*Penstemon digitalis*



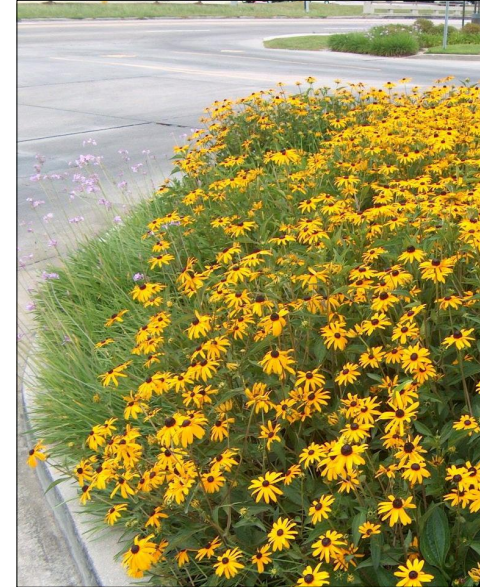
PRAIRIE PHLOX  
*Phlox pilosa*



MOUNTAIN MINT  
*Pycnanthemum virginianum*



ORANGE CONEFLOWER  
*Rudbeckia fulgida*



WILD PETUNIA  
*Ruellia humilis*



LITTLE BLUESTEM  
*Schizachyrium scoparium*



BLUE STEMMED GOLDENROD  
*Solidago caesia*



ZIGZAG GOLDENROD  
*Solidago flexicaulis*



STIFF GOLDENROD  
*Solidago rigida*



NATIVE LANDSCAPE DESIGN  
OTTAWA COUNTY  
DEPT. OF STRATEGIC IMPACT

**PREPARED FOR:**  
Ottawa County  
12220 Fillmore St,  
West Olive, MI 49460

#	DATE	ISSUE / REVISION
1	3/31/23	Concept Development
2	5/5/23	Schematic Design

**SEAL**

**DATE:** 7/21/23

**PROJECT No.:** NE23703

**ISSUE / REVISION:** 2

**SCALE:** NA

**SHEET TITLE**

PLANT PHOTOS (3 OF 5)

**SHEET**

C7

**SHEET No.** 7 OF 9



SHOWY GOLDENROD  
*Solidago speciosa*



PRAIRIE DROPSEED  
*Sporobolus heterolepis*



HEART LEAVED ASTER  
*Symphotrichum cordifolium*



PRAIRIE HEART LEAVED ASTER  
*Symphotrichum oolentangiense*



RED MAPLE  
*Acer rubrum*



SERVICEBERRY  
*Amelanchier laevis*



AMERICAN HORNBEAM  
*Carpinus caroliniana*



WITCH-HAZEL  
*Hamameils virginiana*



WHITE SPRUCE  
*Picea glauca*



WHITE PINE  
*Pinus strobus*



BLACK CHERRY  
*Prunus serotina*



BLACK CHOKEBERRY  
*Aronia melanocarpa*



BUSH HONEYSUCKLE  
*Diervilla lonicera*



SHRUBBY ST JOHNS WORT  
*Hypericum prolificum*



BAYBERRY  
*Myrica pensylvanica*



NATIVE LANDSCAPE DESIGN  
OTTAWA COUNTY  
DEPT. OF STRATEGIC IMPACT

**PREPARED FOR:**  
Ottawa County  
12220 Fillmore St,  
West Olive, MI 49460

#	DATE	ISSUE / REVISION
1	3/31/23	Concept Development
2	5/5/23	Schematic Design

**SEAL**

**DATE:** 7/21/23

**PROJECT No.:** NE23703

**ISSUE / REVISION:** 2

**SCALE:** NA

**SHEET TITLE**

PLANT PHOTOS (4 OF 5)

**SHEET**

**C8**

**SHEET No.** 8 OF 9



SAND CHERRY  
*Prunus pumila*



CHOKE CHERRY  
*Prunus virginiana*



FRAGRANT SUMAC  
*Rhus aromatica*



AMERICAN BLADDERNUT  
*Staphylea trifolia*



ARROWWOOD VIBURNUM  
*Viburnum dentatum*



NANNYBERRY  
*Viburnum lentago*



NOTES:

- 1) PHOTOS REPRESENT SPECIES LISTED IN THE PLANT TABLES. ADDITIONAL SPECIES MAY BE USED ON THIS PROJECT, AND SOME SELECTED SPECIES MAY BE OMITTED BASED ON AVAILABILITY DURING MATERIAL ORDERING.

NATIVE LANDSCAPE DESIGN

OTTAWA COUNTY  
DEPT. OF STRATEGIC IMPACT

**PREPARED FOR:**

Ottawa County  
12220 Fillmore St,  
West Olive, MI 49460

#	DATE	ISSUE / REVISION
1	3/31/23	Concept Development
2	5/5/23	Schematic Design

**SEAL**

**DATE:** 7/21/23

**PROJECT No.:** NE23703

**ISSUE / REVISION:** 2

**SCALE:** NA

**SHEET TITLE**

PLANT PHOTOS (5 OF 5)

**SHEET**

**C9**

**SHEET No.** 9 OF 9